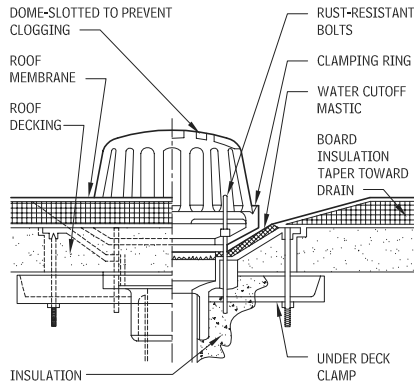
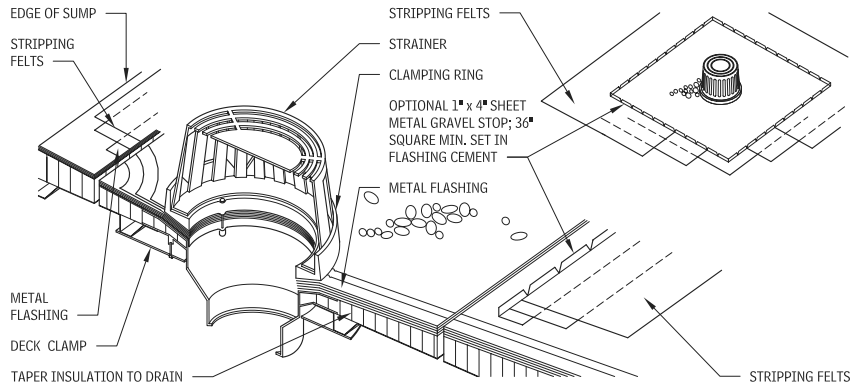


ROOFING ELEMENT B: SHELL 249

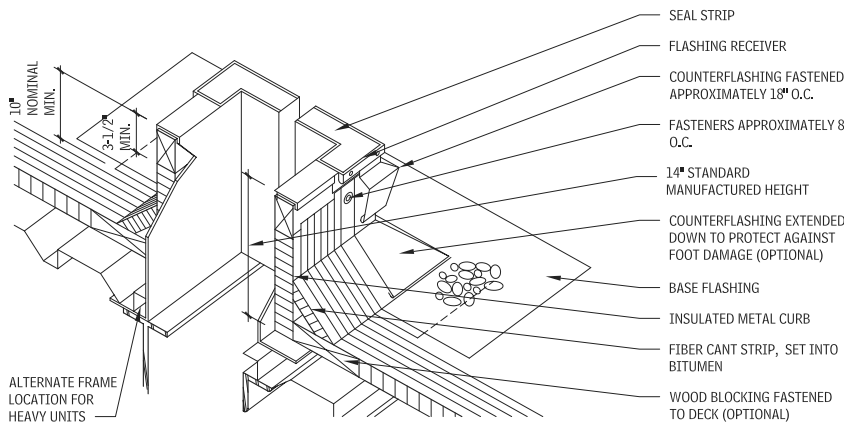
ROOF DRAIN 2.682



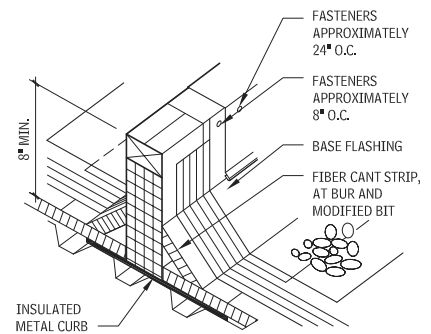
ROOF DRAIN 2.683



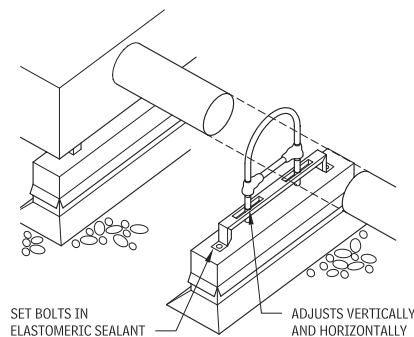
EQUIPMENT CURB 2.684



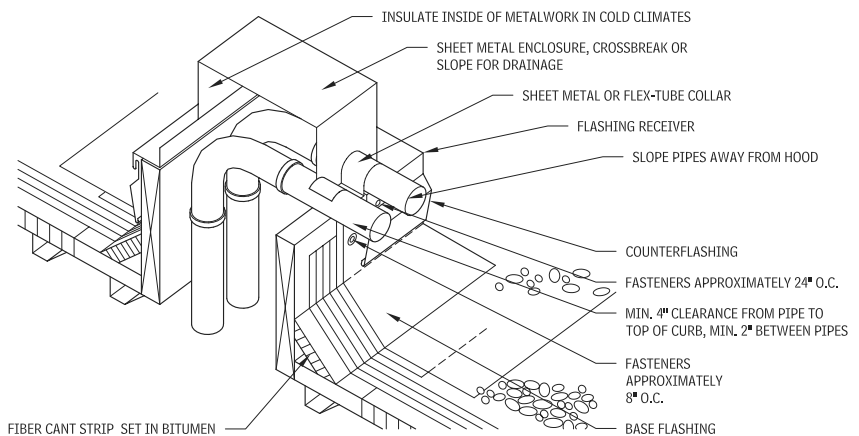
AREA DIVIDER 2.685



PIPE ROLLER SUPPORT 2.686



MULTIPLE PIPE PENETRATION 2.687



NOTES

- 2.683 a. Minimum 30 in. square, 2-1/2 to 4-lb lead or 16-oz soft copper flashing set on finished roof felts set in mastic. Prime top surface before stripping.
- b. Membrane plies, metal flashing, and flash-in plies extend under the clamping ring.
- c. Stripping felts extend 4 in. and 6 in. beyond edge of flashing sheet, but not beyond edge of sump.
- d. The use of metal deck sump pans is not recommended
- 2.685 An area divider is designed simply as a raised insulated metal

- curb or double wood member attached to a properly flashed wood base plate that is anchored to the roof deck. Area dividers should be located between the roof's expansion joints at 200 to 300 ft intervals, depending upon climatic conditions and area practices. They should never restrict the flow of water. Even though many single-ply roof membranes are flexible enough not to require an area divider, the insulation and protection board are not.
- 2.686 This detail allows for expansion and contraction of pipes without roof damage.
- 2.687 This detail illustrates another method of eliminating pitch pockets

and a satisfactory method of grouping piping that must come up above the roof surface.