

**Be there even when you're not.**

Get peace of mind, even at night. The Logitech Alert 750e is a weatherproof digital video security system giving you instant access to crystal-clear HD-quality video anytime, anywhere—on your mobile phone, online or at your computer.



**Logitech Alert 750e Outdoor Master Digital Video Security System**

Start with a Master System



Outdoor Master Security System  
Logitech Alert 750e

OR

Indoor Master Security System  
Logitech Alert 750i



Then, increase your coverage with more cameras



Outdoor Add-On Camera  
Logitech Alert 700e

OR

Indoor Add-On Camera  
Logitech Alert 700i



**1 Free apps for anytime access to live video**

See what's happening on any camera, from anywhere



Watch video live from your iPhone, Android or BlackBerry

- Free apps for your iPhone, Android or BlackBerry
- Access video streams faster than using the web browser on your phone
- Subscribe to Premium Upgrade to control, manage and view both live and recorded videos from your phone

**2 HD-quality video, night vision and wide-angle lens**

Get the detail and coverage you need, even after dark

- HD-quality video images allow you to identify facial features and license plate numbers, far better than VGA or analog IP cameras
- High-quality video resolution: 960 x 720 @15 frames per second
- Infrared night vision lets you see in complete darkness, and turns on automatically in low light
- Wide-angle lens gives you a full 132° field of view eliminating the need for multiple cameras in one spot



HD quality video



Infrared night vision

**Compatibility**

- Windows-based computer with Windows® XP, Vista®, or 7 operating system
- Available Ethernet port
- High-speed Internet connection

**Noteworthy Features**

- Free apps for mobile viewing
- HD-quality video
- Night vision
- Hassle-free installation
- Free viewing over the web
- Motion-triggered alerts
- Built-in DVR recording
- Weatherproof
- Expandable

**3 Hassle-free setup**

No professional installer, extra wires, IP address setting, or router resetting needed

- Set-up wizard walks you through every step, including how to connect to your router
- Avoid Wi-Fi hassles and network interference with Logitech Powerline technology that sends video over your home's existing electrical wiring
- Place your camera almost anywhere using the mounting brackets provided

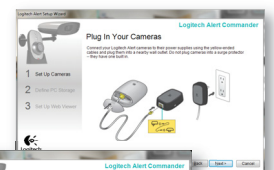
Set-up wizard walks you through every step

**Easy 3-Step Installation**  
No Wi-Fi hassles, IP address setting, or router resetting required.

**Step 1: Install software**

**Step 2: Connect to network adapter and router**

**Step 3: Mount camera and plug power supply into outlet**



**4 Free, secure online access to live video**

Watch live HD video from any PC or Mac

- Log into Logitech's secure server to view live video feeds using any PC or Intel®-based Mac®
- View up to six cameras at the same time



**5 Motion-triggered alerts sent to your phone or email**

Be in the know, when you're on-the-go

- Smart cameras trigger an instant alert once motion is detected—and begin recording automatically
- Target vulnerable areas like doors and windows by specifying up to 16 distinct motion detection zones



**6 Built-in DVR recording**

Every camera works as a DVR with integrated memory card for secure, robust backup



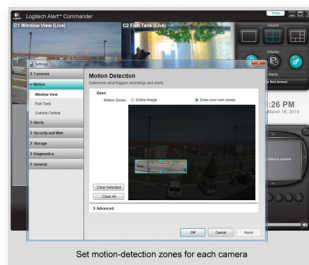
2 GB microSD™ card included.

- Includes 2 GB microSD™ card records and stores footage, eliminating the need for a separate DVR
- Cameras only record when motion is detected to avoid storing unnecessary footage
- Record activity, even when your PC is off or disconnected

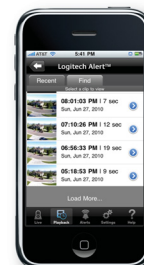
- Video recordings are backed up to your PC when it's reconnected to your network
- Upgrade to a larger microSD card (sold separately) for even more PC-free recording time

**7 Powerful software for total control**

Manage your entire video security system with your PC



Set motion-detection zones for each camera



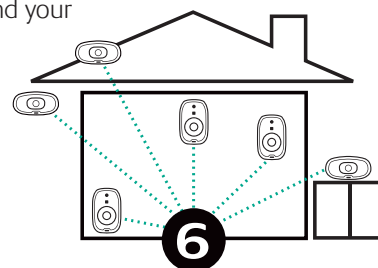
See at a glance when video was recorded

- Watch live video feeds and see what's been recorded on all of your cameras
- Set motion-detection zones for each camera
- Tilt the camera, zoom in, or pan around to zero in on what's happening
- Use the Calendar feature to see at a glance when video was recorded
- Automatically check for software updates to your system and camera, and choose when to download the latest version

**8 Indoor and outdoor expandability**

Add on cameras to extend your security coverage

- Install up to 6 indoor or outdoor cameras, in any combination or location



**Compatibility**

For set-up you'll need:

- Windows-based computer
- Windows® XP, Windows Vista®, or Windows® 7 operating system
- 2 GHz or faster processor
- At least 1 GB RAM
- Available Ethernet port on your home network
- A high-speed Internet connection

What's in the box?

- Logitech Alert outdoor camera
- Powerline Outdoor Camera Power Supply
- Powerline Network Adapter
- 10-ft (3-meter) Ethernet cable
- 20-ft (6-meter) Ethernet cable
- Software CD
- Mounting bracket with installation hardware
- 2 GB microSD card (expandable up to 32 GB)
- User documentation, including a QuickStart Setup Guide

For remote viewing you'll need:

- An iPhone, Android or BlackBerry smart phone (with free apps installed)
- A PC or Intel-based Mac with Adobe Flash Player 10 or later (free download)

