



My city. My space. My music.

Philips **CITISCAPE** headphones collection

PHILIPS
sense and simplicity



©2012 Koninklijke Philips Electronics N.V. All rights reserved. Trademarks are the property of Koninklijke Philips Electronics N.V. or their respective owners.

www.philips.com



Use your QR reader to watch the **CITISCAPE** story unfold

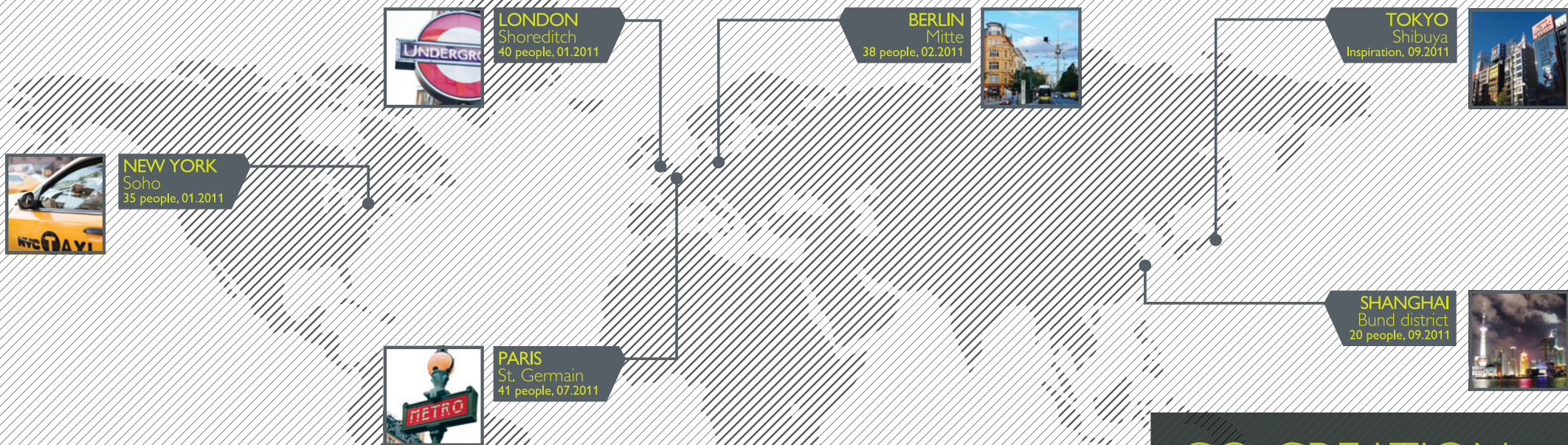


CITISCAPE PHILOSOPHY

My city. My space. My music.

Every city has its own unique personality, but the world's greatest cities share common traits. They have a distinct aesthetic and a dynamic vibe born from the fusion of diverse cultures, and they pulsate with the aspirations and energies of its people.

The CitiScape Collection takes inspiration from today's most vibrant cities and their music-loving urbanites who add color and cadence to everyday life. It is this collective magnetism and spirit that's reflected in every detail of the Collection, from its creative philosophy to its design language and packaging.



CO-CREATION

You spoke, and we listened. Simply because you are the heart and soul, the mover and shaker, of the amazing city you live in. Inspired, we made you a partner and collaborator in our creative journey to design headphones that look, feel and sound exceptional. And that you would be proud to wear.

Wherever you are, whatever you're doing—escaping, switching off or turning it up—your CitiScape headphone is essentially a part of your everyday life. Just like your city.



LONDON

Chris, Kilburn, NW6

DJ/Producer • Writer • Stand-up comedian

Where is home for you? "I am from London, I've lived here all my life, I love London and I could never leave. There's always a vibe. It's always busy, lot's of culture, some partying, it's just brilliant."

What do you do for a living? "I DJ and I produce music. During the day I make music on the laptop, sometimes I go into the studio when I have to record a musician etc. Then at night I am either DJ-ing or performing stand up comedy in dingy clubs. Any creative intrest should be about you, as long as it's honest, and you do something that you love, it will last the distance."



How does music affect your life? "Music is just part of my life constantly. If I am not making it or DJ-ing or something, I am listening to it on my headphones out and about in the streets. One of the albums that changed my life is 'Talking Heads, Fear of Music'. It's punk it's funk, it's afro."



"Music is my main passion in life"



Where do you get your music? "One of my favorite places is 'Rough Trade', it's a record shop in Portobello market which is amazing, it's got every different type of music, anything you want and amazing staff. I always find good stuff in that place. That's really what you want from a record shop."

How and when do you listen to music? "There's no better way to start a day than going out in the fresh air, listening to some music and having a good cup of coffee. I have always got music on the go. If I go on a busy train I put on a pair of headphones and I immerse myself in my music, in my own world, and just relax and take a step back from all the busy city life... no matter where I am going. It's like a soundtrack of whatever I am doing. Music is my main passion in life"

Where do you go on a night out? "At night, a cool spot to go to is 'Plastic People'. A tiny little club in the East End. The best sound system in the world. Tiny, sweaty, always good music and people always up for dancing."



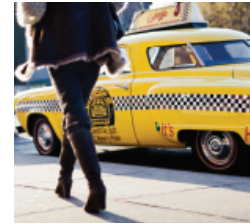
NEW YORK

Tenn, Harlem, NYC

Music lover • Dreamer • Artist

Where is home for you? "I live in Harlem, in Spanish Harlem actually, in New York City."

Describe your life in New York? "Life in New York is really fun, I have a lot of friends and we do a lot of on the fly things. I love to find inconspicuous little boutiques and hidden stores to uncover that coat or hat that totally transforms my fashion life. I enjoy meeting up with different circles of friends for ethnic dinners, experimental art shows, Broadway plays or walks in the city."



"Music is like my heartbeat."



Style is? "Style for me is something that comes from within. I prefer unique pieces, I like things that people have built and made themselves, handcrafted as then there is a great story behind it."

Where is your favorite spot in New York? "My favorite place to hang out with my friends has to be 'Fat Cat' where we can listen to great jazz and I love to play pool."

How and when do you listen to music? "My favorite thing to do is download a new song and listen to it on my headphones on the train. I can then switch off from the world and immerse in my world. When the rumbling of the train is going, you sway back and forth, people are in and out, passing through but you are listening to that song that really engulfs you. What I love about that, I can be interacting with people visually but in my head I hear exactly the sounds that I want to hear. It's actually like a movie in your own mind."

What does music mean to you? "I love music, I love to make music, listen to music, dance to music. Music is like my heartbeat, especially when you are walking in the city you have so many things going on, people moving and shaking, screaming or not screaming, the silence on the subway in a way can be a little deafening... so music for me is this constant soundtrack that keeps me motivated and energized."



EAST—WEST FUSION

Tokyo • Shanghai • Berlin • Paris



The magic's in the mix, as they say. With all the great ideas and input gathered from Asia's music-loving urbanites in Tokyo and Shanghai we headed West to Berlin and Paris dynamic cities of vivid contrasts. We tested our rough design concepts with creative individuals who readily provided their keen observations and feedback, helping us to transform our exciting ideas into amazing reality.



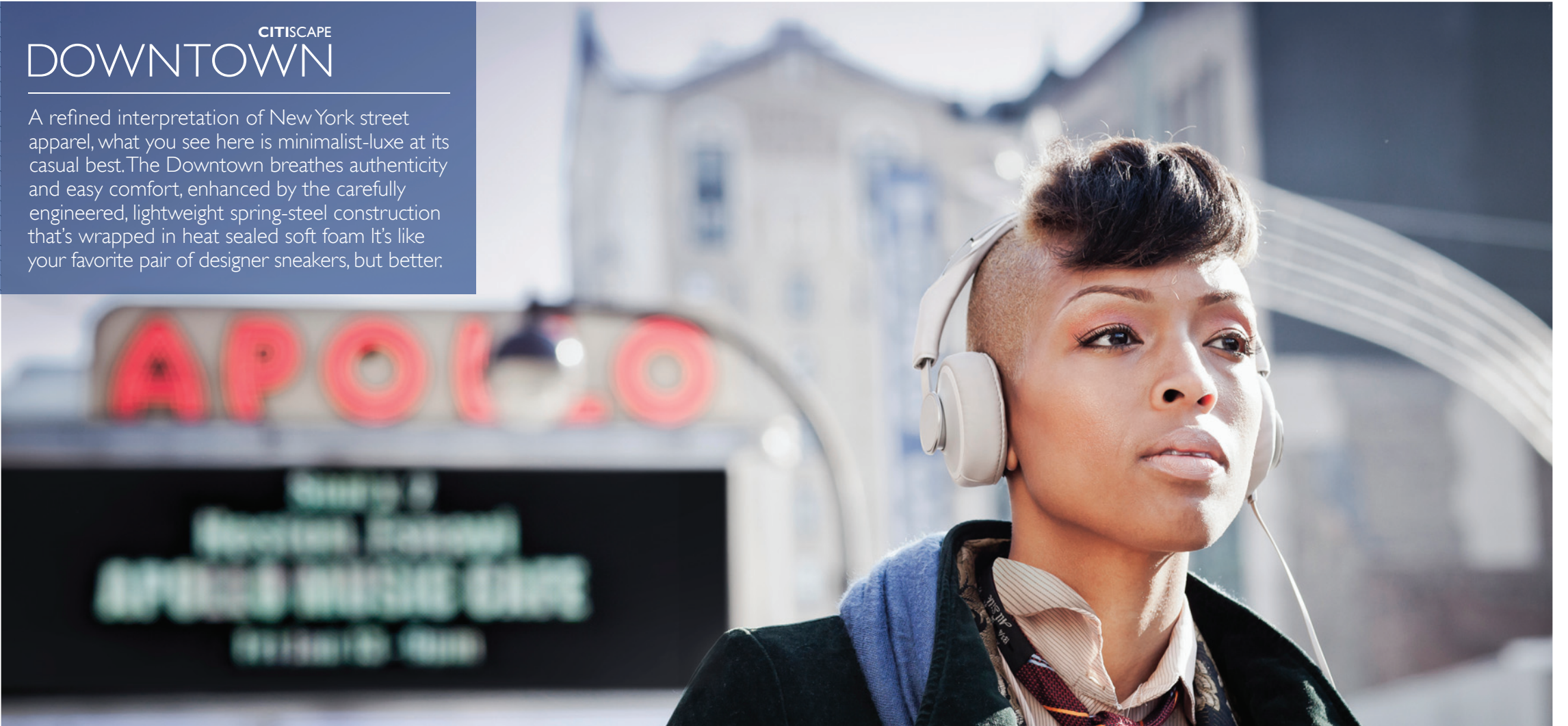


CITISCAPE
UPTOWN

Embrace the glitz or grit of your city armed with your tunes and this street-savvy headphone. Taking its style inspiration from vintage motorbike gear, the Uptown's sturdy aluminum architecture supports soft cushioning for an impeccable fit, while finely crafted detailing gives its iconic form a retro-mod edge.

CITISCAPE
DOWNTOWN

A refined interpretation of New York street apparel, what you see here is minimalist-luxe at its casual best. The Downtown breathes authenticity and easy comfort, enhanced by the carefully engineered, lightweight spring-steel construction that's wrapped in heat sealed soft foam. It's like your favorite pair of designer sneakers, but better.





CITISCAPE
METRO

Chic simplicity takes on an urban pop edge with the Metro. Trip the lightweight plastic fantastic in pure comfort and iconic style when you hit the streets with your music. Its breathable headband and soft, supple auto-fitting cushions adjust to ensure an immaculate fit. No matter what your head shape. It's so comfortable, you may never want to take it off.

A woman with short, light-colored hair is shown in profile, looking out a window. She is wearing earbuds with purple cables. The background is a bokeh of light spots, suggesting an urban setting at night. The text is overlaid on a dark purple rectangular area on the left side of the image.

CITISCAPE

UNDERGROUND

Small in size but big on attitude, the Underground is an in-ear urban warrior that lets you immerse in your music as you brave the city's hustle and bustle. Its smart style and functionality is revealed in its cushy magnetic fluted earbuds that keep them safe and sound in your bag. Last but certainly not least, its unique sliding cables let you share music easily – but only if you want to.

THE CITISCAPE COLLECTION

Effortless style and comfort is harmoniously matched with superb sound performance in Philips' debut collection of CitiScape headphones. Taking cues from the past and the future – where classic meets cutting edge and inspired by urban street apparel, each headphone design is distinctive yet highly functional. Much like the urbanscapes that they're all named after. Wherever you go with your music, you can be sure of a truly immersive sound experience that shields you from the city's noise, but not its buzz. The best part? You only need to wear a CitiScape headphone to know that it's made for you.

MusicSeal®

Whether you're listening to the gnashing guitar riffs of a funk metal band or the lilting soprano of an opera diva, you can be sure that MusicSeal allows your headphones to keep your favorite music all to yourself. That's right, every beat is sealed in. At the same time, this innovative feature prevents ambient noise from seeping through and disrupting your music enjoyment.



CITISCAPE UPTOWN



SHL5905GY

SHL5905BK



CITISCAPE DOWNTOWN



SHL5605BK



SHL5605WT



SHL5605PP



CITISCAPE METRO



SHL5200BK



SHL5200WT



SHL5200PP



CITISCAPE UNDERGROUND



SHE5105BK



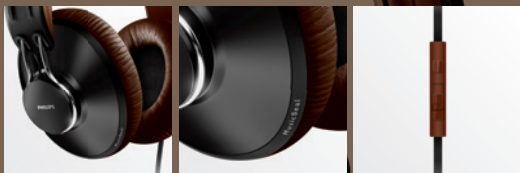
SHE5105PP

* Only for Uptown and Downtown models

CITISCAPE
UPTOWN

FEATURES

- Finely tuned 40mm premium drivers deliver precision sound
- MusicSeal keeps your music in and all to yourself
- Over-ear sound isolating cushions block out the city's noise
- Soft memory foam cushions keep you comfortably immersed in music
- Air-quilted headband for long-listening comfort on the move
- Flat 1.2m anti-tangle cable keeps you kink- and knot-free
- Built-in microphone and volume control lets you take calls



TECHNICAL SPECIFICATIONS

Impedance	32 Ohm	Driver Diameter	40 mm
Sensitivity	103 dB	Speaker Type	Dynamic
Frequency Range	12-23,500Hz	Magnet Type	Neodymium
Max Power Input	30 mW	Acoustic System	Closed

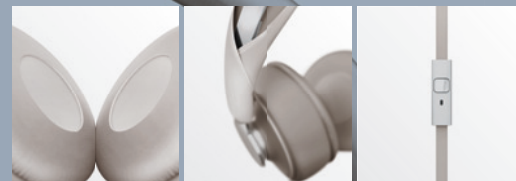


The Citiscape collection all come complete with an in-line microphone compatible with the following devices:
iPhone®, BlackBerry®, HTC, LG, MOTOROLA, Palm®, Samsung.

CITISCAPE
DOWNTOWN

FEATURES

- Finely tuned 40mm drivers deliver clear and natural sound
- MusicSeal keeps your music in and all to yourself
- On-ear sound isolating cushions block out the city's noise
- Soft memory foam cushions keep you comfortably immersed in music
- Soft fabric headband for comfortable listening on the move
- Flat 1.2m anti-tangle cable keeps you kink- and knot-free
- Switch from music to phone calls with built-in microphone



TECHNICAL SPECIFICATIONS

Impedance	32 Ohm	Driver Diameter	40 mm
Sensitivity	102 dB	Speaker Type	Dynamic
Frequency Range	18-22,000Hz	Magnet Type	Neodymium
Max Power Input	30 mW	Acoustic System	Closed



The Citiscape collection all come complete with an in-line microphone compatible with the following devices:
iPhone®, BlackBerry®, HTC, LG, MOTOROLA, Palm®, Samsung.

CITISCAPE METRO

FEATURES

- Powerful 40mm drivers deliver deep and dynamic bass
- On-ear sound isolating cushions block out the city's noise
- Soft foam cushions for music enjoyment in true comfort
- Soft breathable headband for long-listening comfort
- Flat 1.2m anti-tangle cable keeps you kink-and knot-free



TECHNICAL SPECIFICATIONS

Impedance	32 Ohm	Driver Diameter	40 mm
Sensitivity	103 dB	Speaker Type	Dynamic
Frequency Range	10-20,000Hz	Magnet Type	Neodymium
Max Power Input	30 mW	Acoustic System	Closed



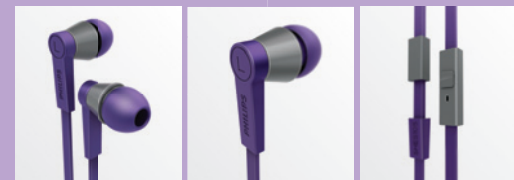
CITISCAPE UNDERGROUND

FEATURES

- Precisely tuned 10mm drivers deliver clear and detailed sound
- Noise isolating ear caps to block out the city's noise
- Choose from 3 pairs of ear caps for a perfect fit
- Magnetic fluted earbuds ensure neat and easy storage
- Flat 1.2m anti-tangle cable keeps you kink-and knot-free
- Switch from music to phone calls with built-in microphone
- Smart sliding cable for fun and effortless music sharing



The CitiScape collection all come complete with an in-line microphone compatible with the following devices:
iPhone®, BlackBerry®, HTC, LG, MOTOROLA, Palm®, Samsung



TECHNICAL SPECIFICATIONS

Impedance	16 Ohm	Driver Diameter	10 mm
Sensitivity	102 dB	Speaker Type	Dynamic
Frequency Range	6-23, 500Hz	Magnet Type	Neodymium
Max Power Input	15 mW	Acoustic System	Closed

