



**World's largest selling
water purifier[#]**

*Based on Unit shipment sales for 2013. Excludes pitchers and faucet mount systems sales and includes only in-home point-of-use drinking water treatment systems.

**NEW
& IMPROVED**
with Taste Enhancer*

10L
storage



Marvella RO



Pureit Marvella RO™ with
Advance Alert System

REACH PUREIT AT
1860-210-1000
www.pureitwater.com

*Pureit Marvella RO™ has a Post-RO Carbon Filter which removes bad odour and enhances the taste of purified water.

instructions manual



Marvella RO

WELCOME TO THE PUREIT FAMILY

Congratulations!

We thank you for the trust you have shown in our product and we assure you that our product will live up to your expectations. Millions of users trust Pureit to provide safe water to their loved ones.

Our product is developed by experts and it is designed to give you water that is 'As Safe As Boiled Water™'. Pureit adheres to some of the toughest standards of leading institutions both in India and abroad.

If you need to get in touch with us for anything, please call us at 1860-180-1000.

We once again thank you for buying Pureit Marvella RO™ and we look forward to a long and fruitful association with you.

CONTENTS

Unique Features of Pureit Marvella RO™	03
Know your Pureit Marvella RO™	04
Technical Specifications of Pureit Marvella RO™ Purifier.....	05
Pureit Marvella RO™'s Unique Technology	06
Water-Flow Diagram and Electrical-Circuit Diagram	07
Installation and Important Instructions	08
Cleaning and Maintenance	13
Advance Alert System of Pureit Marvella RO™	23
Germkill Kit™	24
Ordering GKK-1 and GKK-2.....	24
Frequently Asked Questions (FAQs)	25
Troubleshooting	27
Warranty Card and Details	28
Statement of Hindustan Unilever's Intellectual Property Rights	31

UNIQUE FEATURES OF PUREIT MARVELLA RO™



Advance Alert System

Pureit's Advance Alert System alerts you 15 days in advance before you need to change GKK's.



Triple safety assurance of RO + MF + ROPL

Water is purified through RO Membrane followed by re-purification through MF (Micro Filtration Membrane) that purifies the already purified water. As a third level of safety, your RO is equipped with ROPL, RO purity lock that shuts off the purifier automatically when the GKK life is over.



Advanced 6-stage technology

Pureit Marvella RO™ works on a 6-stage technology that ensures that you get completely safe drinking water as per the standards set by USEPA.



Taste Enhancer

Pureit Marvella RO™ has a Post-RO Carbon Filter which removes bad odour and enhances the taste of purified water.



TDS removal up to 2000 ppm

Pureit Marvella RO™ turns even hard water of TDS 2000 ppm into soft and tasty water.



Large 10 litres storage tank

Pureit Marvella RO™ has 10 litres of storage tank, so you can get purified water even when there is no electricity.



Advanced voltage fluctuation guard

This protects your purifier from sudden voltage fluctuation as high as 300 volts and also works in low voltages of 100 VAC.



Break resistant tap

Pureit Marvella RO™ is equipped with break resistant tap which is tested for up to 50000 times.

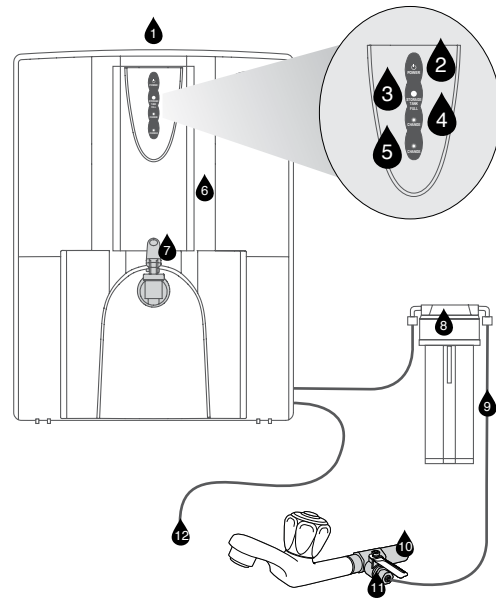


No Annual Maintenance Contract

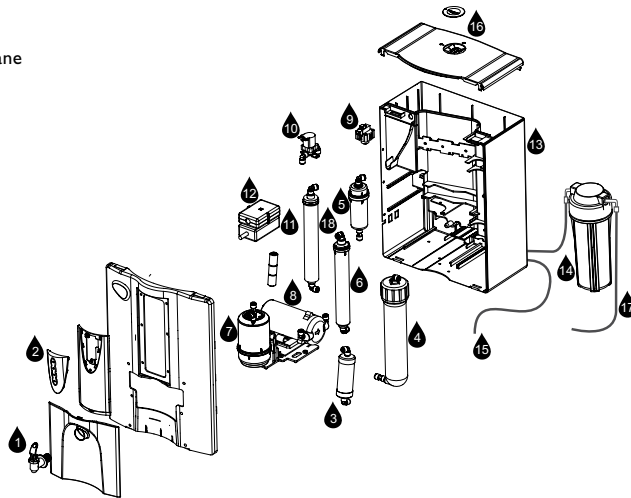
Pay for maintenance only when needed.

KNOW YOUR PUREIT MARVELLA RO™

- 1 Cleaning solution dispenser
- 2 Power indicator
- 3 Storage tank indicator
- 4 GKK-1 (Carbon & Sediment Filter) life indicator
- 5 GKK-2 (RO Membrane) life indicator
- 6 Storage tank
- 7 Tap
- 8 Sediment Filter assembly
- 9 Inlet tube
- 10 Ball Valve Assembly
- 11 Ball Valve
- 12 Waste water pipe



- 1 Tap
- 2 Indicators
- 3 Micro Filtration (MF) Membrane
- 4 RO Membrane
- 5 Post-Carbon Sediment Filter
- 6 Post-RO Carbon Filter*
- 7 Pre-RO Carbon Filter
- 8 Pump
- 9 Low Pressure Switch
- 10 Solenoid Valve
- 11 SMPS
- 12 Control Circuit
- 13 Storage Tank
- 14 Pre-Sediment Filter
- 15 Waste Water Tube
- 16 Cleansing Solution Dispenser
- 17 Inlet Water Tube
- 18 TDS Modulator (Optional)



* Post-RO Carbon Filter fitted in the device may need to be changed intermittently at extra cost in case you face smell issues.

TECHNICAL SPECIFICATIONS OF PUREIT MARVELLA RO™ PURIFIER#

Pureit Marvella RO™	
Height	488 mm
Width	360 mm
Depth	294 mm
Weight of 'Pureit Marvella RO™'	7.8 kg
Flow rate*	Approximately 9 –12 litres per hour
Storage tank capacity	10 litres
6 Stage Purifying Technology	PP Melt Blown Pre-Sediment Filter, Pre-RO Carbon Filter, Post-Carbon Sediment Filter, Reverse Osmosis Membrane, Micro Filtration Membrane and Post-RO Carbon Filter
Membrane type	Thin film composite spiral wound
Pump type	Diaphragm pump, 24V DC
% Recovery*	Typically 25%
TDS reduction**	90% (min)
Input water pH range	6.5–8.5
Power rating	36 Watts
Pressure rating	5–30 PSI***
Input Voltage	100-300VAC, 50-60 Hz
Material of construction for plastic parts	Food safe, non-toxic, engineering grade plastics
Length of Power adaptor	1.8 metres
Total Dissolved Solids	Upto 2000 mg/lit
Total Hardness	500 mg/lit (max)
Iron	0.3 mg/lit (max)
Turbidity	1 NTU (max)
Germkill Kit™	
Material of construction	Food safe, non-toxic, engineering-grade plastics
GKK-1	Pre-Sediment Filter – 2 Nos Pre-RO Carbon Filter – 1 No Post-RO Carbon Filter – 1 No
GKK-2	Pre-Sediment Filter – 2 Nos Pre-RO Carbon Filter – 1 No Post-RO Carbon Filter – 1 No Post-Carbon Sediment Filter – 1 No RO Membrane – 1 No Micro Filtration Membrane – 1 No
Germkill performance standard	Meets stringent international criteria for microbiologically safe drinking water – e.g., Environmental Protection Agency (EPA), USA

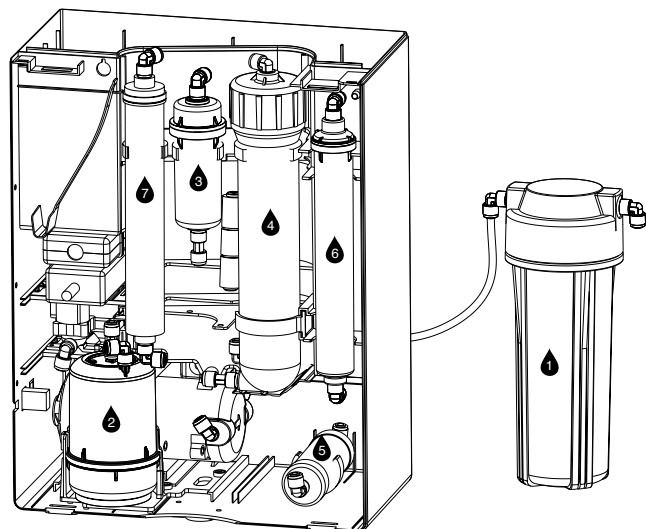
* Permeate flow rate and recovery are based on standard test conditions and may vary depending on input water quality, TDS, pressure and life of Filter elements.

** Input water quality and TDS content are important determinants of output water quality.

*** If input pressure exceeds 30 PSI, please install a company provided pressure reducing valve at an additional cost. If the pressure is lesser than 5 PSI than you need to buy 'Pressure enhancing pump' at an additional cost. Device should not be installed in a house where input pressure is greater than 60 psi.

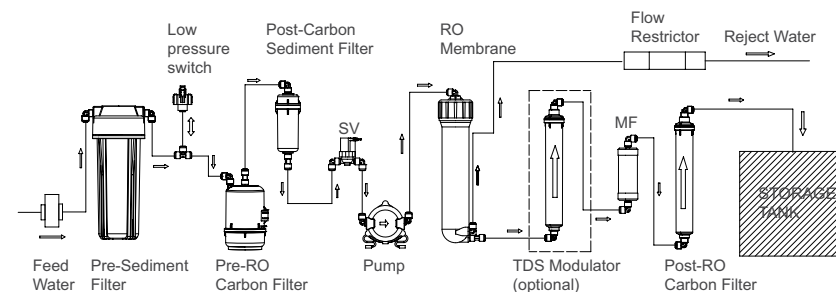
Technical specifications are subject to change or improvement without prior notice.

PUREIT MARVELLA RO™'S UNIQUE TECHNOLOGY

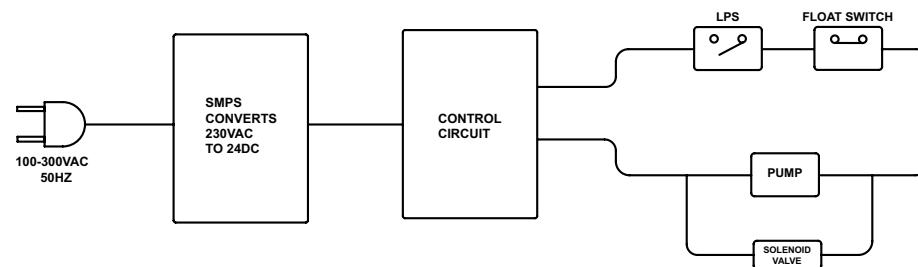


- 1 Pre-Sediment Filter**
Removes fine and coarse particulate impurities/dirt and improves the life of the carbon Filter.
- 2 Pre-RO Carbon Filter**
Removes chlorine and organic impurities like harmful pesticides. It also adsorbs bad taste and odour causing organic compounds from water.
- 3 Post-Carbon Sediment Filter**
Removes remaining fine and coarse particulate impurities/dirt and improves the life of RO Membrane.
- 4 RO Membrane**
Removes dissolved salts, hardness, pesticides and heavy metals like arsenic, lead and mercury. It also removes microbial contaminants like bacteria, virus, protozoa and cysts.
- 5 Micro Filtration (MF) Membrane**
Micro Filtration (MF) Membrane is added Post-RO, which ensures that the water is purified not once but twice.
- 6 Post-RO Carbon Filter**
Last level of purification acts as a polisher and enhances the taste of purified water.
- 7 TDS Modulator (Optional)**
Adds adequate quantities of essential minerals to the purified water.

WATER-FLOW DIAGRAM

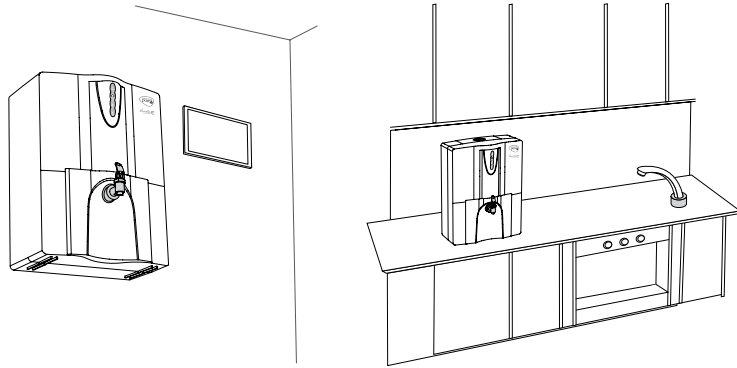


ELECTRICAL-CIRCUIT DIAGRAM



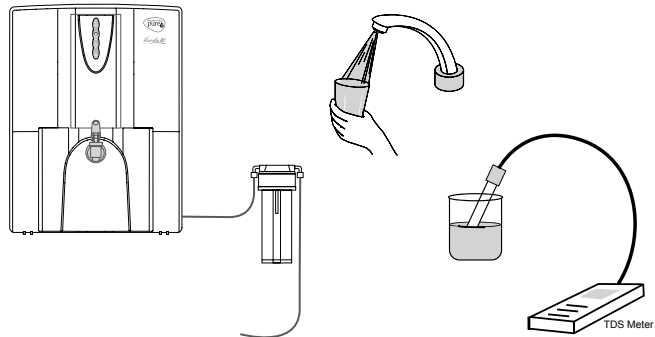
INSTALLATION AND IMPORTANT INSTRUCTIONS

①



Pureit Marvella RO™ must be installed on the wall or can be used as a table top purifier. Please follow the instructions given below while installing.

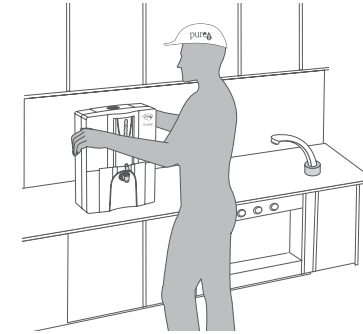
②



Make sure you test the input water TDS before installing Pureit Marvella RO™. The minimum input water TDS should ideally be more than 200 ppm and maximum must be 2000 ppm. If the TDS is less than 200 ppm then you need to install a TDS Modulator which can be bought at an additional cost from authorised Pureit service technician.

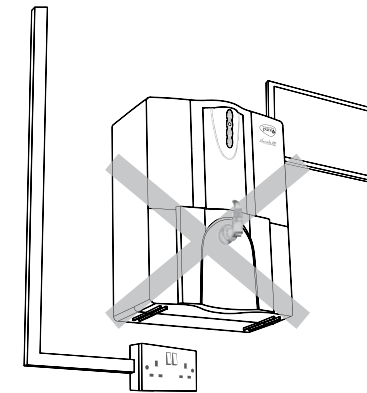
INSTALLATION AND IMPORTANT INSTRUCTIONS

③



Ensure Pureit Marvella RO™ is installed by a trained Pureit technician.

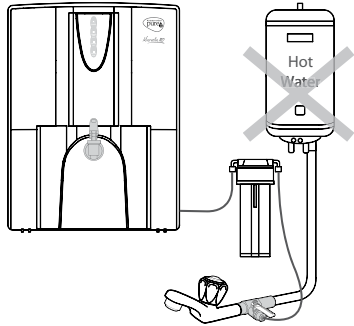
④



Ensure Pureit Marvella RO™ is not installed above any electric socket. Ensure that you use the plug provided with the purifier and do not change it.

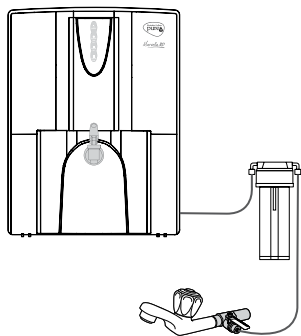
INSTALLATION AND IMPORTANT INSTRUCTIONS

⑤



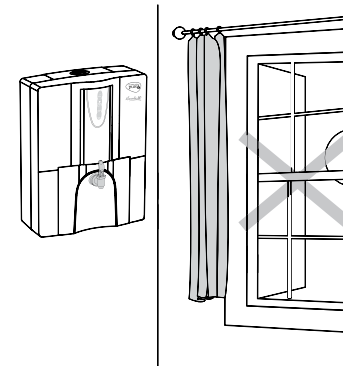
Pureit Marvella RO™ should not be connected to any hot water tap.

⑥



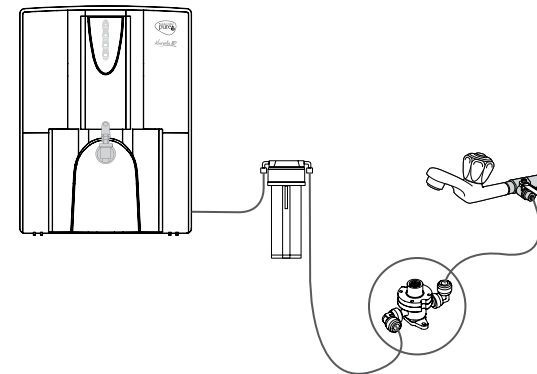
Ensure that the purifier is placed close to the plumbed inlet connection (not more than 2 metres). Also, avoid sharp bends to the pipes.

⑦



Install your Pureit Marvella RO™ away from any direct sunlight, and ensure there is enough ventilation.

⑧

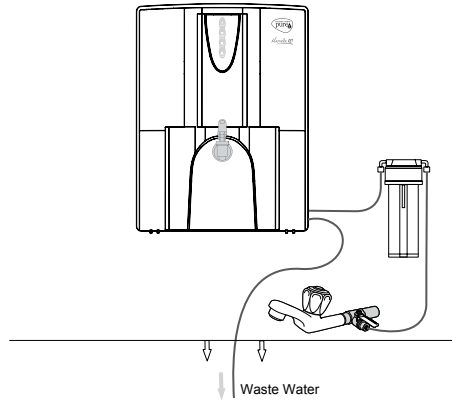


Ensure input pressure is more than 5 PSI and less than 30 PSI. If it is more than 30 PSI, you need to use 'Pressure reducing Valve' which must be bought at an additional cost. If the pressure is less than 5 PSI then you need to buy 'Pressure enhancing Pump' which can be bought at an additional cost. Ensure you buy them from the authorized service personnel of Pureit.

INSTALLATION AND IMPORTANT INSTRUCTIONS

INSTALLATION AND IMPORTANT INSTRUCTIONS

9



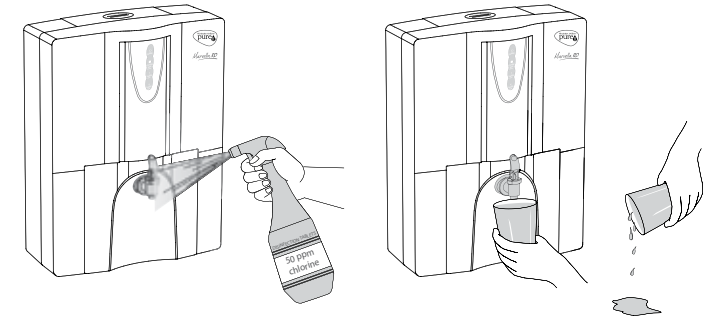
Ensure the waste water pipe is placed lower than the tap of the purifier.

10

The Post-RO Carbon Filter must be detached from the storage tank and flushed directly into the sink; before starting the regular usage. Discard the first cycle of water and do not use for drinking.

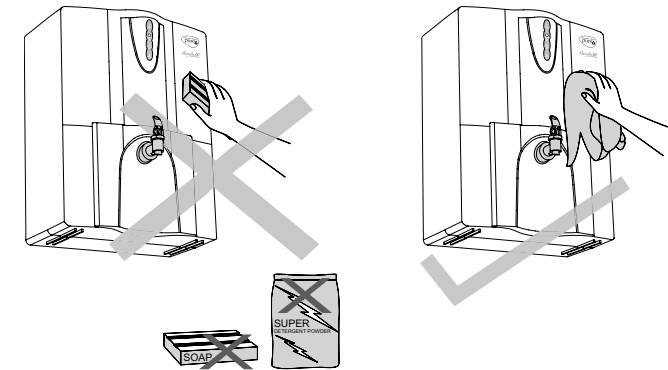
CLEANING AND MAINTENANCE

1



You can clean the tap by using disinfectants like bleach/ hypochlorite (50 ppm available chlorine). Discard 2 litres of water after cleaning the tap.

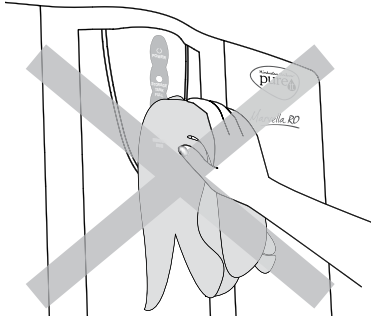
2



External portion of the purifier must be cleaned using wet cloth only. Do not use detergent or soap.

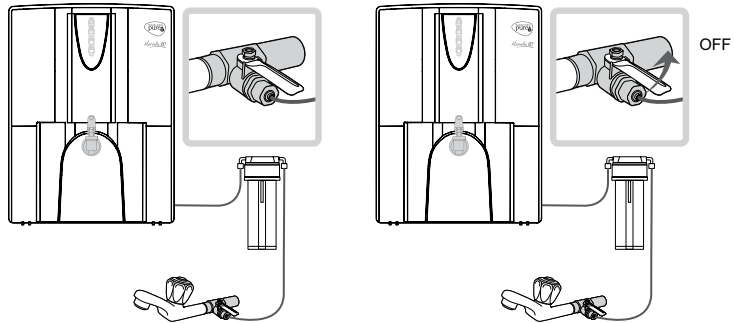
CLEANING AND MAINTENANCE

③



Do not extensively clean and rub the decorative parts and on the LED display panel as this might lead to scratches on the parts.

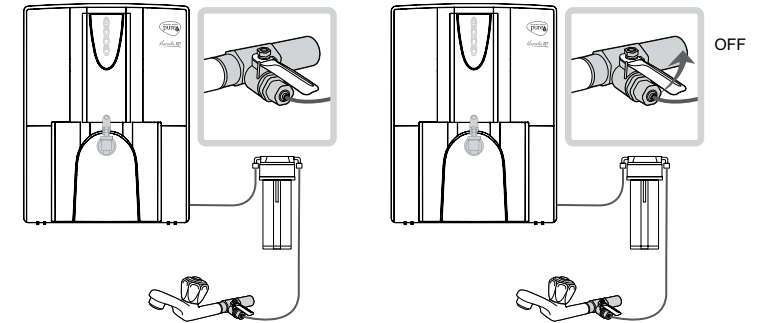
④



Always switch off the 'Ball Valve' and electrical power, if you are out of home for long duration.

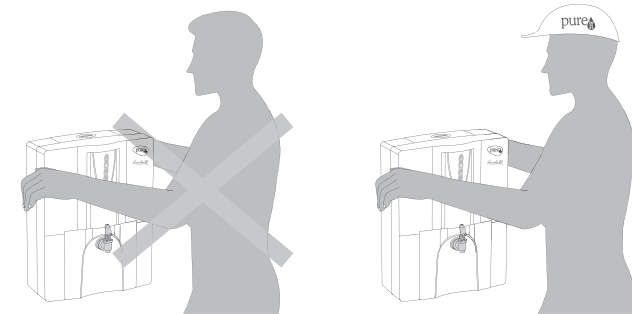
CLEANING AND MAINTENANCE

⑤



Turn off the Ball Valve and switch off the power if you notice any leakage from the purifier.

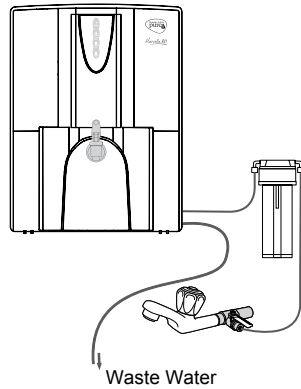
⑥



Do not try to open the purifier for cleaning or for any replacements. This can be done only by qualified company personnel or an authorized agent.

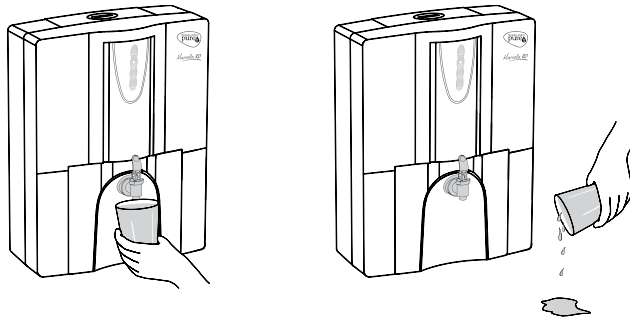
CLEANING AND MAINTENANCE

7



Do not drink the water from the waste water tube, as it is not suitable for drinking. However, you can use that water for gardening or for cleaning the floors.

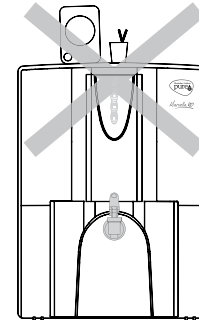
8



You should discard the water in the storage tank once in 15 days. Always drain the water in the storage tank if you have not used the purifier for more than 2 days.

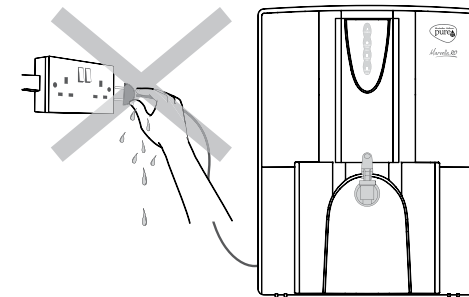
CLEANING AND MAINTENANCE

9



Do not put heavy or sharp objects on the purifier.

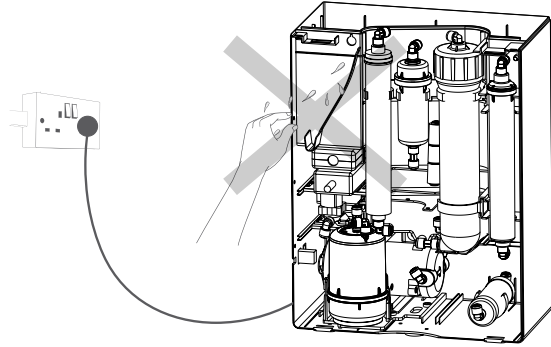
10



Do not plug or unplug the power cord with wet hands. Ensure that the plug isn't wet while plugging in or plugging out to avoid risks such as electrical shock or fire.

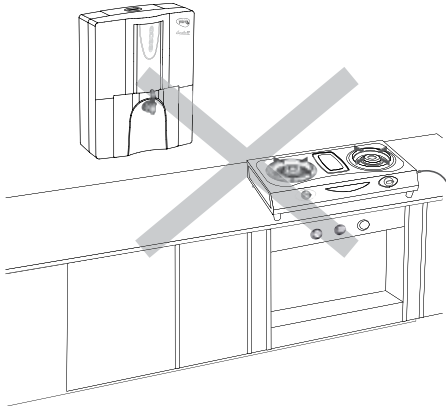
CLEANING AND MAINTENANCE

⑪



Never splash the filtration system with water while cleaning.

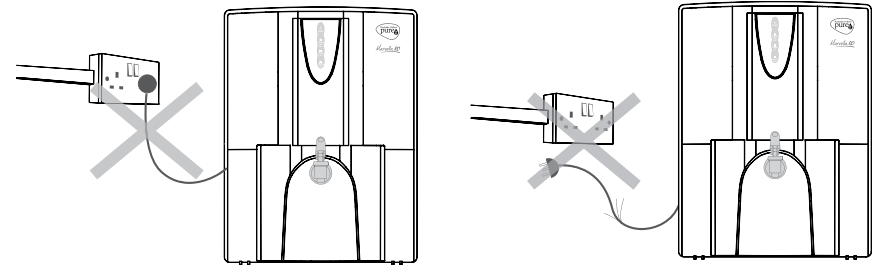
⑫



Keep the cord away from wiring conjunctions to avoid hazard. Never put the cord under rugs, near heat resistors, radiators, stoves or heaters.

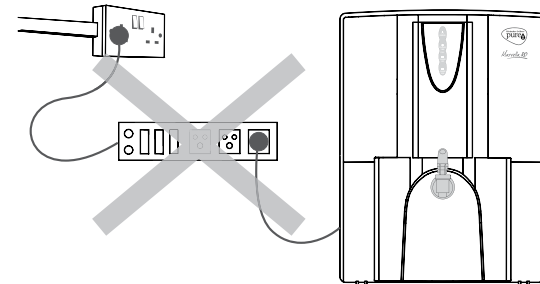
CLEANING AND MAINTENANCE

⑬



If the power cord is damaged, the power adapter must be replaced and not used.

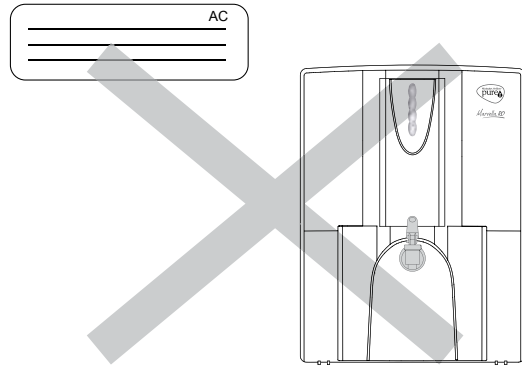
⑭



Avoid using an extension cord.

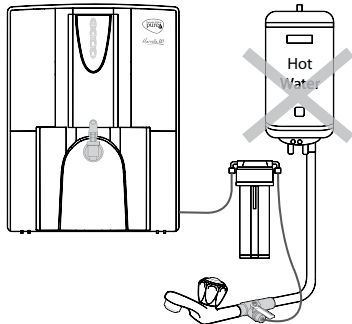
CLEANING AND MAINTENANCE

15



Do not install the purification unit where it could freeze.

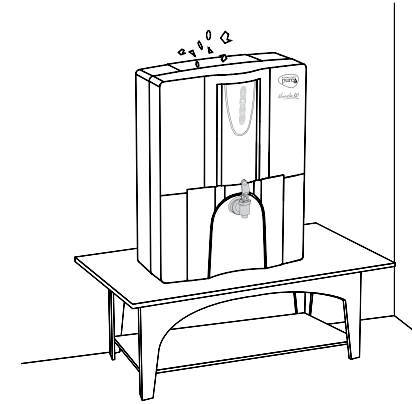
16



Do not run hot water over 45 °C through the purifier.

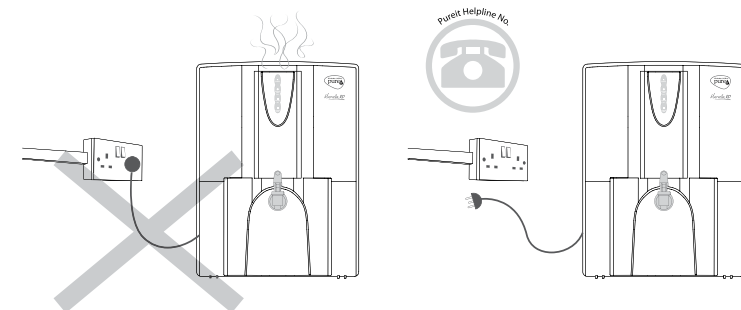
CLEANING AND MAINTENANCE

17



Do not allow any foreign or unexpected material (like dust/ ants/ insects/ other pests) to enter into the storage tank. The filtered water in the storage tank may deteriorate in the process.

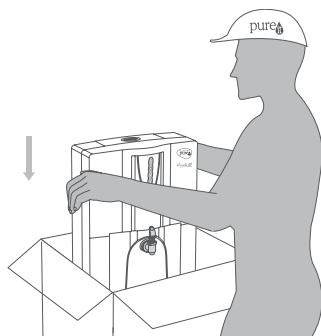
18



In case of any smoke or burning smell, remove the plug immediately and call the Pureit Helpline.

CLEANING AND MAINTENANCE

19



When shifting your house, get the purifier duly inspected and packed by the Pureit service technician. Remove water from the storage tank and properly pack the purifier in case of shifting.

20

You should clean the storage tank once a month by using the disinfectant which can be bought by calling our Pureit helpline number. To clean the tank just open the cleaning solution dispenser and put 1 ml of the solution (10–15 drops) into the storage tank. (Ensure the tank is full). Drain the entire tank after 10 minutes.

21

You should maintain good hygiene in the area around your water purifier. Ensure that this area is free of ants/insects/other pests.

22

Please ensure that you switch off the power whenever you turn off the Ball Valve.

23

Please dispose the used consumables like Sediment Filters, Carbon Filter and Membranes along with the other household waste through the municipal disposal system.

24

Always rely only on the RED indicator to replace the consumables and Membrane. The RO Purity Lock is only an additional assurance of safety. In some cases the input water quality may prevent it from functioning.

25

You should only store water in the purifier and not use other bottles and containers. If you do so, water may get contaminated.

26

The point-of-use reverse osmosis drinking water treatment systems addressed by NSF-58 standard are designed to be used for the reduction of specific substances that may be present in drinking water supplies (public or private) which are considered to be microbiologically safe and are of known quality.

27

Do not use hot or boiling water in the purifier. Similarly do not use freezing cold water (less than 10 °C) in the purifier.

28

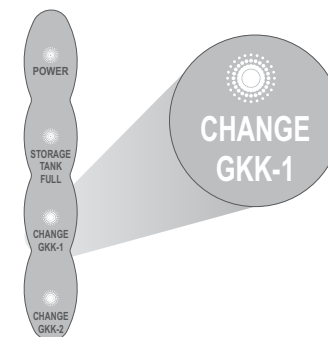
The output water may continue to have flora which are harmless and pose no health hazard to normal healthy adults and children.

ADVANCE ALERT SYSTEM OF PUREIT MARVELLA RO™

As an additional assurance of safety Pureit Marvella RO™ has a unique 'RO Purity Lock system' which monitors the usage and shuts the water flow after the life of GKK-1 and/or GKK-2 is over.

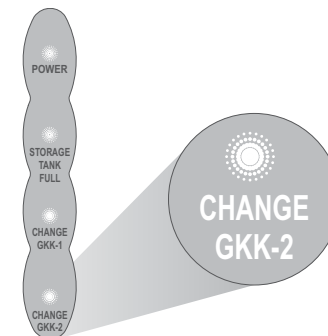
'Change GKK-1' indicator

GREEN	GKK-1 is safe to use
RED - Blinking continuously	The GKK-1 usage has crossed 385 hours and hence the life of GKK-1 will end soon, it is time to replace the Pre-Sediment Filter, Pre-RO Carbon Filter and Post-RO Carbon Filter. You need to order Germkill Kit-1
RED - Completely red	The GKK-1 life of 400 hours** is over and it must be replaced. At this point of time the mechanism shuts the water flow thus ensuring you don't drink unsafe water even by accident.



'Change GKK-2' indicator

GREEN	RO Membrane and the MF is safe to use.
RED - Blinking continuously	The RO and the MF has crossed 785 hours and hence the life of Membrane will end soon, it is time to replace the RO Membrane and the MF.
RED - Completely red	The RO and MF's life of 800 hours*** is over and it must be replaced. You need to order for the GKK-2. At this point of time the mechanism shuts the water flow thus ensuring you don't drink unsafe water even by accident.



* The GKK-1 life of 400 hours typically gives 4000 litres of purified water under tested conditions of 18 PSI input pressure, 450–500 ppm TDS and 25 °C temperature.

While Germkill Kit™ (GKK-1) will be changed after 4000 litres and there's an Auto Shut Off to force this change, Sediment Filter may have to be changed in the interim depending on the quality of input water.

** The GKK-2 life of 800 hours typically gives 8000 litres of purified water under tested conditions of 18 PSI input pressure, 450–500 ppm TDS and 25°C temperature.

*** While Germkill Kit™ (GKK-1) will be changed after 4000 litres and there's an Auto Shut Off to force this change, Sediment Filter will be required to be replaced after approximately every 2000L. It may have to be changed in the interim depending on the quality of input water.

GERMKILL KIT™

Germkill Kit™ Replacement Schedule		
Water consumption	Parts to be replaced	Procedure
Approximately after every 2000L	Pre-Sediment Filter	After every 2000L (approximately) the Pre-Sediment Filter will need to be replaced. The Pureit Helpline will contact you for the same. There is a free Sediment Filter in your device which needs to be preserved to facilitate the above change. In case you misplace the free SF, then at the time of Sediment Filter change you will have to buy the same at extra cost.
Approximately after every 4000L	Pre-Sediment Filter	When 'CHANGE GKK-1' starts blinking RED, please contact the Pureit Helpline and get these components from GKK-1 changed.
	Pre-RO Carbon Filter	
	Post-RO Carbon Filter	
	TDS Modulator (optional)	
Approximately after every 8000L	Pre-Sediment Filter	When 'CHANGE GKK-2' starts blinking RED, please contact the Pureit Helpline and get these components from GKK-2 changed.
	Pre-RO Carbon Filter	
	Post-RO Carbon Filter	
	Post-Carbon Sediment Filter	
	RO Membrane	
	Micro Filtration Membrane	
	TDS Modulator (optional)	

ORDERING GKK-1 AND GKK-2



Phone
1860-180-1000



Log in
www.pureitwater.com

FAQs

How does Pureit Marvella RO™ purify water?

Pureit Marvella RO™ has a 6-stage purification system which ensures you get water that is 'As Safe As Boiled Water™' and also removes excess total dissolved solids (TDS) to make your water tastier.

In the first stage, the water passes through the Pre-Sediment Filter which removes fine and coarse particulate impurities/dirt.

The second stage is the Pre-RO Carbon Filter that removes chlorine and organic impurities like harmful pesticides. It also adsorbs bad taste and odour-causing organic compounds from water.

The third stage is the Post-Carbon Sediment Filter which removes the remaining dirt.

Then the water passes through the RO Membrane at high pressure, with the help of an inbuilt pump. The RO removes dissolved salts, hardness, pesticides and heavy metals like arsenic, lead and mercury. It also removes microbial contaminants like bacteria, virus, protozoa and parasites.

The fifth stage is the Micro Filtration (MF) Membrane which acts as an additional assurance of safety towards microbial contaminants.

The last stage is the Post-RO Carbon Filter, which acts as a polisher and enhances the taste of purified water.

What is the storage capacity of 'Pureit Marvella RO™'?

Marvella RO™ has a storage tank capacity of 10 litres. The process of filling the storage tank is fully automatic and when you take water out of the tank, the purification process automatically starts and refills the storage tank.

How much time it takes to purify water in 'Pureit Marvella RO™'?

'Pureit Marvella RO™' can purify water upto 9-12 litres per hour. However, the time taken to purify depends on the life of the Filters, the input water pressure, TDS and other impurities present in water.

What is Advance Alert System?

Pureit's Advance Alert System give you a complete status update on the functioning of your purifier thereby assuring you safe water and maximum convenience. It has 4 indicators:

Power - Tells you if the purifier is ON or OFF. When it is ON it will turn GREEN.

Water Tank Full - Tells you if the water tank is full or not. This indicator will turn GREEN when the tank is full.

Change GKK-1 - Tells you if the consumables (which includes the Pre-Sediment Filter, Pre-RO Carbon Filter and Post-RO Carbon Filter) is safe, nearing end of life or has reached end of life.

When the light is GREEN, it indicates the Filters are safe to use.

When the light starts blinking RED, it indicates that the Filters have reached 385 hours of usage and nearing the end of life (400 hours***) and only 15 hours of usage is left before you replace them.

When the light turns completely RED it indicates that the Filters need to be replaced and purified water supply has been stopped.

Change GKK-2 - Tells you if the RO Membrane is safe, nearing end of life or has reached end of life.

When the light is GREEN, it indicates the Membrane is safe to use.

When the light starts blinking RED, it indicates that the Membrane has reached 785 hours of usage and nearing its end of life of 800 hours*** and only 15 hours of usage is left before you replace them.

When the light turns completely RED then it indicates that the RO Membrane, Micro Filtration (MF) Membrane, Post-RO Carbon Filter and Post-Carbon Sediment Filter needs to be replaced and the water supply has been stopped.

*Please note you need to replace the Pre-Sediment Filter, Pre-RO Carbon Filter, Post-Carbon Sediment Filter and Post-RO Carbon Filter as well when you replace the RO Membrane and Micro Filtration (MF) Membrane.

How will I get new consumables/Membranes replaced?

You need to call the Pureit Helpline and order for a Germkill Kit™. The Pureit Helpline specialist will visit your place and replace the Germkill Kit™ at a nominal cost.

* The GKK-1 life of 400 hours approximately gives 4000 litres of purified water under tested conditions of 18 PSI input pressure, 450-500 ppm TDS and 25 °C temperature.

** The GKK-2 life of 800 hours approximately gives 8000 litres of purified water under tested conditions of 18 PSI input pressure, 450-500 ppm TDS and 25 °C temperature.

While Germkill Kit™ (GKK-1) will be changed after 4000 litres and there's an Auto Shut Off to force this change, Sediment Filter will be required to be replaced after approximately every 2000L. It may have to be changed in the interim depending on the quality of input water.

Can I drink the first purification cycle of water from the purifier?

No, it is recommended to throw the first cycle of water that is filled in the storage tank when the new Pureit Marvella RO™ purifier is installed, and also whenever the Germkill Kit™(s) are replaced.

What should I do if there is no purified water in the storage tank?

In case there is no purified water in the storage tank then you need to first check whether the LED display shows RED in either "CHANGE GKK-1" or "CHANGE GKK-2". If it shows GREEN or is blinking RED and still there is no water supply then you can check whether the Ball Valve is closed or the power is off. If none of the above 3 cases are true, please call Pureit Helpline for help.

Can I open and service my purifier?

It is not recommended to open and service device by an individual. Call our Pureit Helpline if you face any issue which requires servicing and opening the device.

Can I use any type of water to purify through my Marvella RO?

Pureit Marvella RO will purify "potable" water for removal of hardness and other impurities to give you safe drinking water. If the input water has impurities normally not present in drinking water (high iron/turbidity/microbial contamination etc.) or water is from unknown source (river/lake/pond/borewell etc.) then suitable pretreatments may be required.

Can I use the reject water?

It is not recommended to use the reject water for any kind of consumption (drinking or cooking). It can probably be used for gardening or cleaning floors.

What should I do if any part of the purifier is broken?

Please call the Pureit Helpline. Our technicians will visit your house and will guide you on the repairs required. There will be a nominal visiting charge and you would need to buy the parts required.

What should I do if there is a leakage from the purifier?

First switch off the Ball-Valve if you find any leakage from the purifier and turn off the power switch. Check for any visual improper fitment (like tap) and then call our Pureit Helpline and register a service request.

How long the stored water in Pureit Marvella RO can be used for drinking?

You can use stored water for 2 days. If it is not used for more than 2 days we advise you to discard that water, refill and then consume.

TROUBLESHOOTING

The water from the purifier tastes unusual

This might be because of one or more of the following reasons:

- a) The storage tank has not been cleaned for a long time – Please clean the storage tank after removing the water with a mild hypochlorite solution. The hypochlorite solution can be ordered by calling our Pureit Helpline.
- b) The water is stored for too long in the storage tank – Please drain the stored water and fill fresh water.
- c) The Filters or the Membranes need to be replaced/cleaned – Please replace or get them cleaned by calling the Pureit Helpline.

The purification is taking more time

This might be because of one or more of the following reasons:

- a) The Ball Valve may not be opened fully – Please ensure the Ball Valve is open completely so that the water flow is not restricted.
- b) The temperature of input water might have dipped drastically.

The storage tank is not getting filled

This might be because of one or more of the following reasons:

- a) Check if the Ball Valve is kept open.
- b) Check if either 'replace GKK-1' or 'replace GKK-2' is RED. If yes then replace the Filters/Membranes.
- c) Check if there is any leakage from the purifier and if there is any leakage then call the Pureit Helpline.



Marvella RO

Warranty Card

Pureit Marvella RO™ Water Purifier Warranty Registration Card

Serial No. _____

Date of Purchase: _____

Purchaser's Name: _____

Telephone No. _____

Address: _____

Dealer's Name: _____

Address: _____

Dealer's Signature
(with rubber stamp)

Note:

1. Please retain the bill of purchase.
2. Please quote Serial number, Model and Date of Purchase in all your correspondence.

'PUREIT MARVELLA RO™' WARRANTY DETAILS

Product warranty

The 'Pureit Marvella RO™' guarantees that you will get 'As Safe As Boiled Water™' as described in 'Pureit Marvella RO™'s Unique Technology' section as long as the 'Pureit Marvella RO™' is used in the manner specified in this manual.

1. The Consumables including the Sediment Filter, Carbon Filter, Post-Carbon Sediment Filter, RO Membrane and Post-RO Carbon Filter and Micro Filtration (MF) Membrane will not be covered under warranty#.
2. The warranty does not cover external booster pump, pressure reducing valve which is bought as an accessory to the purifier.
3. All other components including the electrical parts will have a 12-month warranty against the manufacturing defects.

This warranty is subject to the following conditions:

The customer will notify the company in writing or by calling the help line promptly if any defects are noticed and give the company or its authorised agent adequate opportunity to inspect, test and remedy them. For this the customer may have to deposit the 'Pureit Marvella RO™' if so required by the company, with the company's office/ service centre/authorised dealer along with the original invoice, in the city where they are sold.

Inspection and test report of the company's office/service centre/authorised dealer will be final and binding under the warranty for determining defects, repairs/alterations required or carried out, or certifying working of the 'Pureit Marvella RO™' thereafter.

The company's obligation under this warranty shall be limited to repairing or providing replacement of parts, which are found to be defective.

The company or its authorised Pureit Helpline centre/licensed service provider reserves the right to retain any part(s) or component(s) replaced at its discretion, in the event of a defect being noticed in the equipment during the warranty period.

The company's liability under this warranty shall in no event, and under no circumstances, exceed the price paid by the customer.

This warranty is confined to the first purchaser of the product only and is not transferable.

In the event of repairs of any part/s of the 'Pureit Marvella RO™', this warranty will thereafter continue and remain in force only for the unexpired period of the warranty.

The warranty is issued at Mumbai, and courts at Mumbai shall have exclusive jurisdiction over matters covered or flowing from this warranty.

The company obligation is only for effective repairs of any defective part of the 'Pureit Marvella RO™', and not for 'Pureit Marvella RO™' replacement as such.

Repairs or replacements will be carried out either by the dealer from whom the device has been purchased or through a Company Pureit Helpline Centre, or the Authorised Licensed service provider with whom the device has been registered.

For units installed beyond the municipal limits of the jurisdiction of the Authorised licensed service provider or company Pureit Helpline centre, all expenses incurred in collecting the device(s) for part(s) thereof from the company's Pureit Helpline centre or licensed service centre, as well as expenses incurred in deputing of service personnel/technicians towards conveyance and other incidentals etc. will be borne by the customer.

The warranty is void if any repair work is carried out by persons other than those of the company, or its authorised dealers.

Any part(s) of the electrical and purifier system replaced by the company at its discretion shall be with a functionally operative part.

The concerned Pureit Helpline centre or Licensed service provider will advise the customer whether to effect the repair at site or at the Pureit Helpline centre.

While Germkill Kit™ (GKK-I) will be changed after 4000 litres and there's an Auto Shut Off to force this change, Sediment Filter will be required to be replaced after approximately every 2000 L. It may have to be changed in the interim depending on the quality of input water.

'PUREIT MARVELLA RO™' WARRANTY DETAILS

Warranty does not cover accessories external to the equipment supplied by the dealer.

In case of repairs or replacement of any part/s of the unit, this warranty will thereafter continue and remain in force only for the unexpired period of the warranty. Replacement of parts would be purely at the discretion of HUL, the same part model shall be replaced and in the event such part model has been discontinued, it shall be replaced with the part model of price equivalent at the time of purchase.

In case of any damage to the product/customer abuse/repairs by unauthorized personnels/misuse detected by the authorized service center personnel, the warranty conditions are not applicable and repairs will be done subject to availability of parts and on a chargeable basis only.

This warranty shall not cover any consequential or resulting liability, damage or loss to property or life arising directly or indirectly out of any defect in the water purifier. The company's obligation under this warranty shall be limited to repair or providing replacement of defective parts only under the warranty period.

The warranty is not applicable in any of the following cases:

01. The completed warranty card is not presented to authorized service personnel at the time of service of the product.
02. The product is not operated according to instructions given in the operating instruction booklet.
03. The device is not installed in the proper procedure specified.
04. Any defect caused due to improper electrical circuit outside the device in the house or by any defective electrical supply.
05. Defects are caused by improper or reckless use, which shall be determined by the company personnel.
06. Any repair work is carried out by the persons other than authorized service personnel.
07. The damages caused by due to transportation or shifting is not covered by warranty.
08. Defects are due to causes beyond control like lightning, abnormal voltage, acts of god or while in transit or service center or purchasers residence. (normal voltage range specified 230 volts +/- 10% with 50Hz).
Customer shall ensure that a stabilizer is installed in those areas where voltage is not available within the warranty range (230V +/- 10%). The stabilizer should be of any reputed manufacturer.
09. The warranty will automatically terminate after 12 months expiry of the warranty period even though the device may not be in use for any time during the warranty period for any reason.
10. Only courts in Mumbai will have the jurisdiction for settling any claims.
11. The serial number of the device or any part thereof is damaged, defaced, altered, obliterated, or tampered with or removal for any reason whatsoever.

This warranty is valid in India only.

Notwithstanding anything to the contrary contained in, or implied by this warranty:

The company's liability under this warranty shall be limited only to defects in the 'Pureit Marvella RO™' which occur under the conditions of normal operation of the 'Pureit Marvella RO™' and their proper and prescribed use as per this user manual. This warranty does not cover or extend to defects which are determined by the company or its authorised agents as occurring or resulting from or attributable to negligence, abuse, misuse, faulty care, operation or maintenance or repairs, alterations to the 'Pureit Marvella RO™' or any part thereof by others.

General

For the purpose of this warranty, the following expressions shall have the following meanings respectively:

- 'The 'Pureit Marvella RO™' shall mean the 'Pureit Marvella RO™' described in the invoice.
- 'The customer' shall mean the purchaser of the 'Pureit Marvella RO™' from the company or the company's authorised dealer who is a party to the invoice.
- 'The company' shall mean Hindustan Unilever Limited.
- 'Invoice' shall mean the Invoice issued for the 'Pureit Marvella RO™' by the company or its authorised dealer to the customer describing the 'Pureit Marvella RO™' and indicating, inter alia, the total purchase price thereof, the name of the customer, and the place where the 'Pureit Marvella RO™' is to be delivered.
- 'User manual' shall mean the instructions for installation, use and maintenance contained in the leaflet published by the company, and delivered to the Customer at the time of sale of the 'Pureit Marvella RO™'.
- Visit the Pureit website for more detailed instructions on cleaning/maintenance of your purifier.
- Warranty doesn't cover any damage/other issues arising out of ingress of external/foreign material (like dust, insects, ants, other pests) in the water purifier as it is the responsibility of the consumer to keep the area around the purifier clean and free of pests/dust.

STATEMENT OF HINDUSTAN UNILEVER'S INTELLECTUAL PROPERTY RIGHTS

The following are covered under Hindustan Unilever's Intellectual Property Rights:

Pureit Marvella RO™

Germkill Kit™

As Safe As Boiled Water™

Germkill Life Indicator™

Micro Filtration Membrane

RO Purity Lock

Advance Alert System



Hindustan Unilever Limited

© HUL 2011