

EAGLE-I SMART^{Wi-Fi}
Plug & Play Alarm System



User Manual

Connect with us at:

Toll-free: **1800 209 9955**

Email: **secare@godrej.com**

Visit us at: **www.godrejsecure.com**

Table of Contents

Features 1

In the Box 2

Plug & Play Alarm Panel 3~4

Alarm Panel Overview

Power On

Power Off

Testing and Installing Accessories 5~12

Remote Control

Product Overview

Arm(Away Arm)

Disarm

Home Mode (Stay)

Mute Operation

SOS

Nightlight On/Off

Door/Window Contact

Product Overview

Test

Installation

Door/ Window Sensor

Connecting and Deleting Accessories 13~14

Pairing the Remote Control

Pairing the Door/Window Contact

Deleting Accessories

Zone Setting For Wireless Accessories 15~16

Entry and Exit Delay 17

Act as an Accessories Kit 18~19

Pairing the Siren to the Control Panel

Pairing Other Wireless Detector to the Control Panel

Deleting the Siren from the Control Panel

Deleting Accessories from the Control Panel

Specifications 20~22

Plug & Play Alarm Panel

Wireless Remote Control

Wireless Door/Window Contact

Foreword

Dear Customers:

Thank you for purchasing Eagle-ISmart. This product is a totally plug & play wireless home security solution. It features automatic pairing to various accessories, putting your home under all-round protection.

To experience this wonderful product, please follow the instructions in the user manual. If there is any problem when using the product, please contact us for help.

Please read this manual carefully before using.

Please kindly keep this user manual for your reference when necessary.

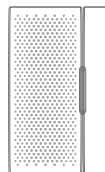
Features

- 100% wireless configuration, easy to use
- Compact and streamline design
- One-button pairing
- Work as accessory or standalone alarm panel
- Built-in battery for 8-hour standby
- Mute operation
- Support 40 wireless accessories (including remote control)
- Built-in 1,000,000 RF codes combination maintains high reliability

In the Box

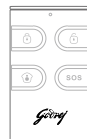
Alarm Panel x 1

The alarm panel receives and processes signals from wireless accessories. When the accessory is triggered, the panel will alarm and the strobe light will flash to deter intruders. With plug-in design, it is powered by AC 100~240V by plugging it into a wall outlet.



Wireless Door/Window Contact x 1

The door/window contact can be installed on doors, windows and any other objects that open and close. The sensor transmits signals to the control panel when a magnet mounted near the sensor is moved away.



Wireless Remote Control x 1

The remote control is compact and portable; it is convenient to carry it to arm, disarm, part arm the alarm system and also make an emergency call.

User Manual x 1



Double-sided Tape for Door/Window Contact x 2

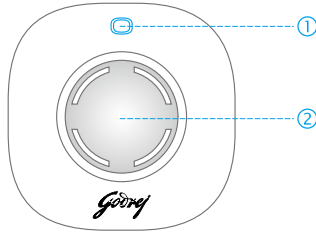


Screws and Wall Plugs x 2



Plug & Play Alarm Panel

Alarm Panel Overview



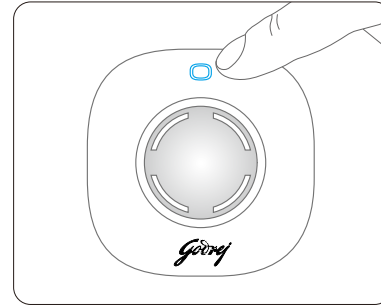
- ① Power button/connect button ② Strobe light

Siren and Strobe Light

Status	Strobe Light
Arm or Home Arm	Flashes once and then on
Disarm	Flashes twice and then off

Power On

The siren is powered off by default. Plug the siren into a power outlet. Press the power button. It beeps once, indicating power is on.



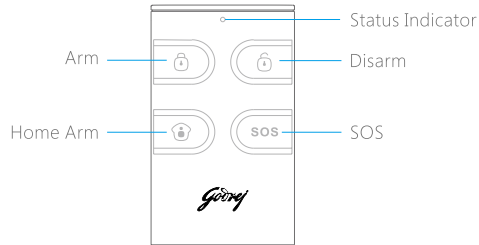
Power Off

After the siren is powered on, press the power button once. Then, press and hold the power button for 6 seconds until a beep is heard, indicating power is off.

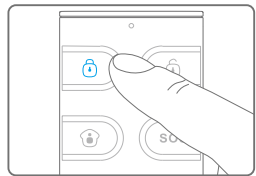
Testing and Installing Accessories

Remote Control

Product Overview

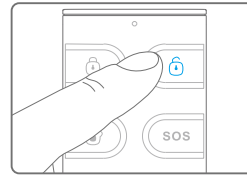


Arm (Away Arm)



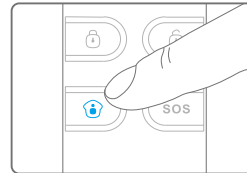
Press the **[Arm]** button. The strobe light flashes once and then on, indicating the system is armed.

Disarm



Press the **[Disarm]** button. The strobe light flashes twice and then off, indicating the system is disarmed.

Home Mode (Stay)



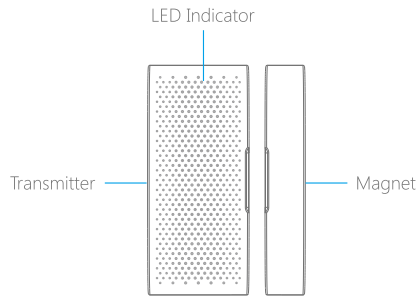
Press the **[Stay]** button, 3 seconds later, the strobe light flashes once and then on, indicating the system is in home mode.

When the whole system is in home mode, all the detectors in normal zone are armed except those in home mode zone, while the home mode detectors are in disarmed status, users can move freely within the range of the disarmed area.

Note: Home mode requires the zone setting on detectors. For more details please refer to page 15-16.

Door/Window Contact

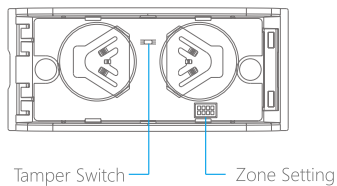
Product Overview



LED Indication

Status	Meaning
Blinks once	Door/window contact is triggered
Blinks once every 3 seconds	Low power indication, please replace battery immediately

PCB Layout

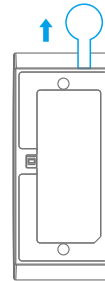


Test

This is to test whether the contact can work properly.

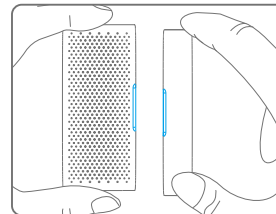
① Remove the insulating strip

Remove the insulating strip, the contact works immediately.

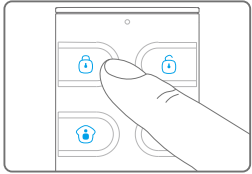


② Pay attention to the direction

There are gap marks on the side of the transmitter and magnet. Make sure the gap marks face each other and within the range of 1 cm.



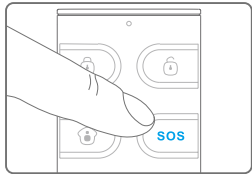
Mute Operation



Press and hold the **[Stay]** button for 1 second, then press the **[Arm]** button within 3 seconds. The system is armed silently. Press and hold the **[Stay]** button for 1 second, then press the **[Disarm]** button within 3 seconds. The system is disarmed silently.

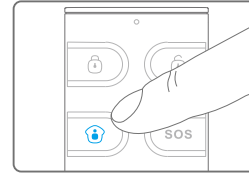
SOS

SOS

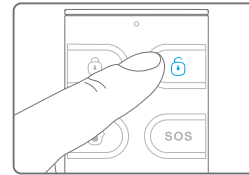


Press the **[SOS]** button on the remote control, the system will alarm immediately.

Nightlight On/Off




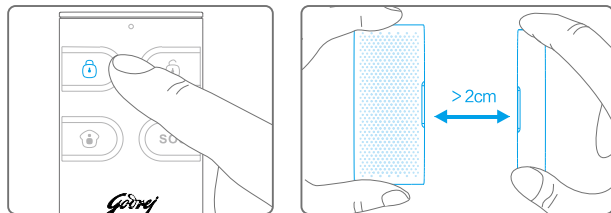
Press the **[Stay]** button twice, the siren switches to home mode silently and the nightlight is on.



Press the **[Disarm]** button twice, the siren disarms and switches off the nightlight.

③ Test the contact

Press the [Arm ] button. The system switches to armed status. Separate the transmitter and magnet within the space more than 2 cm. If an alarm is triggered at once, that means the sensor is working properly.



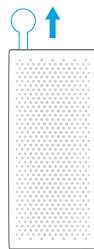
Installation

Make sure the contact works properly before installing it. There are gap marks on the side of the transmitter and magnet. Make sure the gap marks close to each other and within the range of 1 cm. As long as the space between the transmitter and magnet is over 2 cm and the LED on the transmitter is on.

Door/ Window Sensor

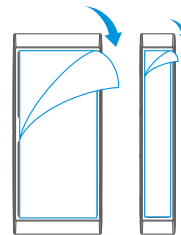
Step 1:

To power up the Sensor remove the Battery Tab



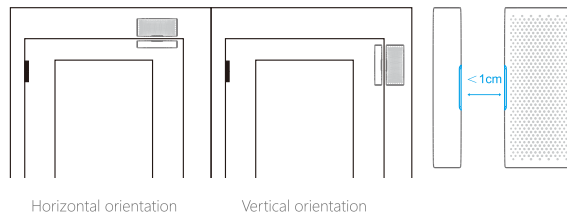
Step 2:

Attach the Adhesive Pads to the back of the Sensor and Magnet



Step 3:

Place the Sensor on the door/ window frame and the magnet on the door/ window ensuring that the distance between them is not greater than 1cm when the door/ window is shut.



Connecting and Deleting Accessories

Accessories need to be paired to the siren so that the siren can receive signals from them, and sound the alarm. Accessories in the kit have been paired to the siren before delivery, and ready for use. If the siren does not alarm when detectors are triggered, please pair them again. Accessories purchased separately must be paired to the siren before use.

Pairing the Remote Control

① Press the connect button on the siren

Press the connect button on the siren, it beeps once, 3 seconds later, it beeps once again and the strobe flashes, indicating the siren is ready for pairing.

② Press any button on the remote control

Press any button on the remote control, the siren beeps once, indicating successful pairing.



Note: If the siren beeps twice, it indicates the remote control has been paired before.

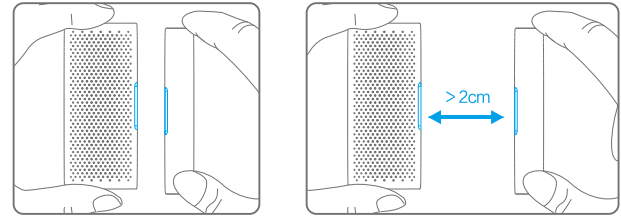
Pairing the Door/Window Contact

① Press the connect button on the siren

Press the connect button on the siren, it beeps once, 3 seconds later, it beeps once again and the strobe flashes, indicating the siren is ready for pairing.

② Separate the transmitter and magnet

Make sure the gap marks close to each other and within the range of 1cm, and then separate them with the space more than 2 cm. The siren beeps once indicates successful pairing.



Note: If the siren beeps twice, it indicates the door/window contact has been paired before.

Deleting Accessories

Deleting accessories is to disconnect accessories from the siren. After that, the siren cannot receive signals from accessories nor trigger alarms.

Press and hold the connect button on the siren for 6 seconds, the siren beeps once and the strobe flashes twice, indicating all the accessories are deleted.

Zone Setting For Wireless Accessories

You can set zones by changing the jumpers in detectors. After the setting, detectors can work in corresponding modes. It must be paired to the siren again.

Zones include normal zone, home mode zone, single delay zone and 24-H zone.

The detailed operations are as follows:

Remove the rear cover of a door/window contact or PIR motion detector. Set the jumpers accordingly. Pay attention to the order of D0-D3.

Normal zone: In arm or home mode state, the siren will sound immediately when the detectors set to normal zone is triggered.

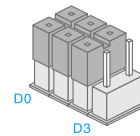
Home mode zone: In home mode state, the siren will not sound when the detectors set to home mode zone is triggered.

Single delay zone: Alarms will be delayed according to the set delay time. You can set one or more detectors to single delay zone. Generally, it applies to the door/window contact at the entrance. For example, if you do not want carry the remote control, set the door/window contact to single delay zone and set the delay time to 30 seconds. After you enter home, the system in the arm state will alarm 30 seconds later. The siren beeps once every 5 seconds, reminding you to disarm the system.

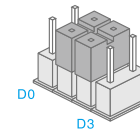
24-H zone: In any condition, the system will alarm immediately once the 24-H zone detector is triggered.

How to set:

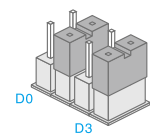
Open the rear cover of the detector, change the array of jumpers to the corresponding position as below (Mind the direction of D0-D3):



Normal Zone

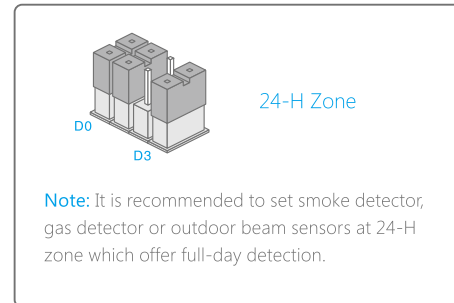


Home Mode Zone



Single Delay Zone

Note: The default zone setting for PIR motion detector is home mode zone. The default zone setting for door/window contact is normal zone.



Entry and Exit Delay

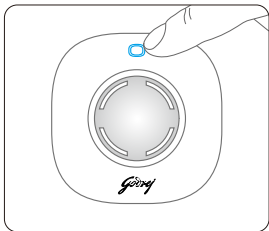
The detectors should be set in single delay zone before using this function.

Exit Delay (Arm Delay)


The whole alarm system enters armed status after the delay time.

Entry Delay (Alarm Delay)

When the detectors which have been set to single delay zone are triggered, siren will alarm after the delay time. If the detectors that set to normal zone or home mode zone are triggered, siren will alarm immediately.



Press the connect button twice, delaying for 15 seconds.
Press the connect button for three times, delaying for 30 seconds.
Press the connect button for four times, disabling the function.

Note: Press the [Arm ] button on the remote control twice. The system switches to armed status immediately.

About single delay zone, please refer to page 15.

Act as an Accessory Kit

If user purchased our alarm system before, Eagle-ISmart can act as an accessory kit, working with the control panel after successful

Pairing the Siren to the Control Panel

Press the Connect Button on the Siren

Press the connect button on the siren, it beeps once, 3 seconds later, it beeps once again and the strobe flashes, indicating the siren is ready for pairing.


Press the [Arm] or [SOS] Button on the Control Panel

Press the [Arm ] or [SOS] button on the control panel, the siren beeps once, indicating successful pairing.

Exit the Pairing Status

Press the connect button on the siren, it beeps once, exiting the pairing status.

Test Whether the Siren has been paired

Press the [Arm ] button on the remote control. If the siren and control panel both beep once, it indicates the pairing succeeds. If not, please pair them again.

Pairing Other Wireless Detectors to the Control Panel

After control panel enters its pairing status (please refer to its user manual), trigger the wireless detector, the control panel beeps once to indicate successfully pairing.

Deleting the Siren from the Control Panel

Press and hold the connect button on the siren for 6 seconds. The siren beeps once and the strobe flashes twice. All accessories are deleted.

Deleting Accessories from the Control Panel

Please refer to the manual of control panel.

Specifications

Plug & Play Alarm Panel

Power Supply

AC 100~240V, 50/60Hz

Backup Battery

3.7V 600mAh lithium battery

Volume

90dB

Static Current

< 13mA

Alarm Current

< 100mA

Radio Frequency

433.92MHz (± 75 KHz)

Housing

PC+ABS plastic

Operating condition

Temperature 0°C~+55°C

Relative Humidity < 80% (non-condensing)

Dimensions (L×W×H)

90 x 90 x 42.2mm (Not include the plug part)

Wireless Remote Control

Power Supply

DC 3V (CR2025 lithium battery x 1pc)

Transmitting Current

< 7mA

Transmitting Distance

< 80m (in open area)

Radio Frequency

433.92MHz (\pm 75KHz)

Housing Material

ABS plastic

Operating Condition

Temperature 0°C ~ +55°C

Relative Humidity < 80% (non-condensing)

Dimensions (L x W x H)

58 x 31 x 9.5mm

Wireless Door/Window Contact

Power Supply

DC 1.5V (AA 1.5V LR6 Battery x 1pc)

Static Current

< 35uA

Alarm Current

< 40mA

Transmitting Distance

\leq 80m (in open area)

Radio Frequency

433.92MHz (\pm 75KHz)

Housing Material

ABS plastic

Operating Condition

Temperature 0°C ~ +55°C

Relative Humidity < 80% (non-condensing)

Transmitter Dimensions (L x W x H)

71 x 34 x 17.5mm

Magnet Dimensions (L x W x H)

51 x 12 x 13.5mm