

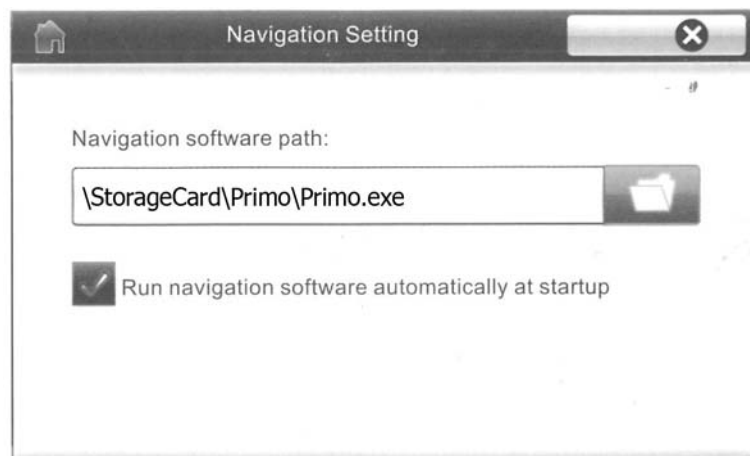


Follow these instructions to set up the navigation on your PLDNV78I.

1. Push the POWER ON button to turn on your PLDNV78I.
2. Tap HOME, move page to NAV. Tap NAV.
3. A dialog box with the text "NOT FIND NAVIGATION SOFTWARE" may appear; you may ignore this.
4. Re-insert the mini SD card with the navigation maps into your device.

5. On the menu, tap  (SETUP), then tap  (NAVIGATE SETUP).

6. Tap the FOLDER icon, then select \StorageCard\Primo\Primo.exe, as shown:



7. Your navigation software is now setup! Press the X in the top left corner to activate.