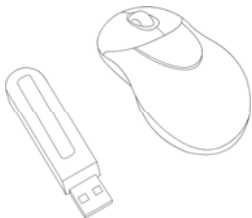




Wireless Optical Travel Mouse

User's Manual



**PLEASE READ THESE INSTRUCTIONS CAREFULLY
BEFORE INSTALLING THIS DEVICE.**

Table of Contents

FCC Statement.....	Page 3
Introduction.....	Page 6
Package Contents.....	Page 7
Installing the Mouse	
Step 1.....	Page 8
Step 2.....	Page 9
Step 3.....	Page 10
Using the Mouse.....	Page 11
Troubleshooting.....	Page 12
Technical Support.....	Page 13
Warranty Information.....	Page 14

FCC Statement

Wireless Optical Travel Mouse - Model# PD910P

This device complies with part 15 of FCC Rules. Operation is subject to the following two conditions: (1) this device may not cause harmful interference, and (2) this device must accept any interference received, including interference that may cause undesired operation.

This equipment has been tested and found to comply with the limits for a Class B digital device, pursuant to part 15 of FCC Rules. These limits are designed to provide reasonable protection against harmful interference when the equipment is operated in a residential installation. This equipment generates, uses, and can radiate radio frequency energy and, if not installed and used in accordance with the instruction guide, may cause harmful interference to radio communications.

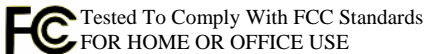
However, there is no guarantee that interference will not occur in a particular installation. If this equipment does cause harmful interference to radio or television reception, which can be determined by turning the equipment off and on, the user is encouraged to try to correct the interference by one or more of the following measures:

- Reorient or relocate the receiving antenna.
- Increase the separation between the equipment and the receiver.
- Connect the equipment into an outlet on a circuit different from that to which the receiver is connected.
- Consult a service representative for help.

Properly shielded and grounded cables and connectors must be used in order to comply with FCC emission limits.

Micro Innovations is not responsible for any radio or television interference caused by using other than recommended cables and connectors or by unauthorized changes or modifications to this equipment. Unauthorized changes or modifications could void the user's authority to operate the equipment.

Responsible party:
Micro Innovations
400 Clearview Avenue
Edison, NJ 08837



This Class B digital apparatus complies with Canadian ICES-003. Cet appareil numérique de classe B est conforme à la norme NMB-003 du Canada.

INTRODUCTION

Congratulations on the purchase of your new Wireless Optical Travel Mouse. The advanced design makes the Wireless Optical Travel Mouse comfortable and easy to use. The mouse works with IBM and 100% IBM-compatible computers and is supported by Microsoft® Windows® 98, Windows Me, Windows 2000 and Windows XP.

OPTICAL SENSING TECHNOLOGY

Optical Sensing Technology scans the desktop and provides the most accurate input device solution available today. Because this technology functions on most surfaces, it eliminates the need for a mouse pad.

RF WIRELESS FREEDOM

Radio Frequency wireless technology provides a greater range of motion for the user and eliminates the annoying cords that clutter your desktop.

PACKAGE CONTENTS

- Wireless Optical Travel Mouse
- USB RF Receiver
- 2 AAA Batteries
- USB Extension Cable
- CD driver software
- User's Manual
- Warranty Information

INSTALLING THE MOUSE

After installing the driver software on your computer, you may need to reboot your system. Make sure that all work is saved and all programs are closed before installing this device.

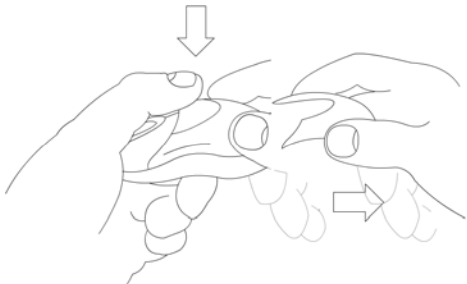
STEP 1 - Battery Installation:

1 - Locate the two AAA sized 1.5 Volt batteries that came in your Wireless Optical Travel Mouse package.

2 - Remove the battery compartment cover located on top of your mouse by pressing the release button and sliding the cover backwards.

3 - Install the two batteries into the compartment paying close attention to proper polarities.

4 - Replace the battery compartment cover.



STEP 2 - Connecting the Receiver:

If you are connecting the mouse to a notebook that has an onboard pointing device or if you are using a keyboard with an onboard pointing device, you may need to disable that device before installing and using the mouse.

1 - Power on your system.

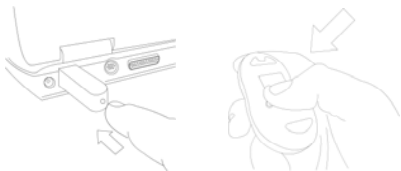
2 - Connect the receiver to any available USB port or hub connected to your computer.

3 - Insert the CD into your CD drive. If the installation disk does not run automatically, click Start, select Run and type <drive letter>:\setup. Click Ok. Follow the onscreen instructions.

Note: If you are installing this device running Windows XP, you may encounter a notification stating this device has not passed the Windows XP logo testing. Select Continue Anyway to complete the installation.

STEP 3 - User Setup Procedure:

- 1 - Push the button on the receiver.
- 2 - With a pen or pencil push the button on the bottom of the mouse located underneath the mouse.
- 3 - Your mouse is now ready for use.



Mouse Settings:

Click on the **Start**, select **Settings / Control Panel / Mouse** to customize your mouse settings.

For additional information, click the “Help” button within the mouse software interface.

USING THE MOUSE

MOUSE CARE

Keep all beverages away from the mouse working area and avoid any spills. Maintaining your Wireless Optical Travel Mouse will ensure longer life and will minimize the chances of causing damage to your mouse and computer. There are no other user serviceable parts. Service and repair may only be done by Micro Innovations.

BATTERY LIFE

Like all battery-operated devices, the Wireless Optical Travel Mouse is dependent on battery current for operation. Typically, the batteries on this wireless device should last approximately 3 months depending on use. In order to extend the battery life, there is an on/off switch located on the bottom of the mouse.

TROUBLESHOOTING

- If your mouse is not responding, be sure to check if the connector is correctly installed into the your computers port or hub. Also check if there are any breaks or sharp twists in the mouse cable.
- Make sure to install the batteries with correct polarity in your wireless mouse.
- Make sure you have connected the receiver correctly - You may have connected your mouse while the computer was shut down. Try disconnecting and re-connecting the mouse while the computer is on.
- If you have Windows 95 or Windows NT, these operating systems do not support USB devices.

TECHNICALSUPPORT AND SERVICE

Call toll free: 1 (877) 550-5534 or visit our website
www.mi-products.com

Hours of Operation:
8:30am to 7:00pm, Eastern Standard Time

WARRANTY INFORMATION

Charge to the purchaser for parts or labor for the time periods. This warranty does not apply to any appearance items of the product nor to the additional excluded item set forth below nor to any product the exterior of which has been damaged or defaced which has been subjected to misuse, abnormal service or handling or which has been altered or modified in design or construction.

The limited warranty described herein is in addition to law. ALL IMPLIED WARRANTIES INCLUDING THE WARRANTIES OF MERCHANTABILITY AND FITNESS FOR USE ARE LIMITED TO THE PERIOD FROM THE DATE OF ORIGINAL PURCHASE SET FORTH BELOW. Some states do not allow limitations on how long an implied warranty last, so the above limitation may not apply to you.

Neither the sales personnel of the seller nor any other person is authorized to make any warranties other than those described herein or to extend the duration of any warranties beyond the time period described herein on the behalf of Micro Innovations.

The warranties described herein shall be the sole and exclusive warranties granted by Micro Innovations and shall be the sole and exclusive remedy available to the purchaser corrections of defects, in the manner and for the period of time described herein, shall constitute complete fulfillment of all liabilities and responsibilities of Micro Innovations to the purchaser with respect to the product and shall constitute full satisfaction of all claims, whether based on contract negligence, strict liability or otherwise. In no event shall Micro Innovations be liable or in any way responsible, for

any incidental or consequential economic or property damage.

Some states do not allow the exclusion of incidental or consequential damages, so the above exclusion may not apply to you.

This warranty gives you specific legal rights. You may also have other rights, which vary from state to state.

Warranty Period:

Lifetime on parts and labor from date of purchase

Where to ship:

Micro Innovations

400 Clearview Ave,

Edison NJ 08837

Enclose \$5.95 for Shipping and Handling