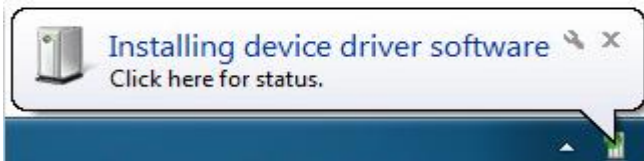


The Infinity **IN-USB-1** and **IN-USB-2** foot pedal is fully compatible with all Microsoft Windows Versions & Apple Macintosh. Make sure the transcription software (not included) you are using is compatible with your operating system.

Installing the IN-USB-1 or IN-USB-2 Foot Pedal on Windows XP, Vista, 7, 8 and 10:

Plug the **IN-USB-1** or **IN-USB-2** foot pedal directly into an open USB port on your PC. The foot pedal will be recognized automatically.



You'll be notified that the device is ready to use.

General Installation Information:

- Download and install transcription software (NOT INCLUDED)
- Reboot computer
- Plug in the IN-USB-1 or IN-USB-2 foot pedal to an available USB port on your computer
- If computer does not recognize foot pedal try another available USB port

Tips:

Make sure the IN-USB-1 or IN-USB-2 is getting enough power. If your foot pedal doesn't work properly when connected to a USB hub, try connecting it directly to one of your computer's USB ports. Some ports on a USB hub, monitor, or other device that's plugged into your computer might not provide enough power to support your Foot pedal.

Installing the IN-USB-1 or IN-USB-2 on Apple Macintosh:

Contact the manufacture of your Apple Macintosh transcription software program for installation instructions.