

# Get set up with Cozmo.

## What's included:



Cozmo



Charger & wall adapter

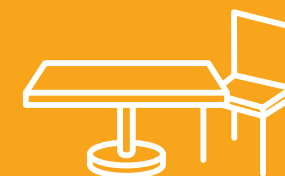


3 power cubes

## What you need:



A compatible device  
Check compatibility at [anki.com/devices](http://anki.com/devices)

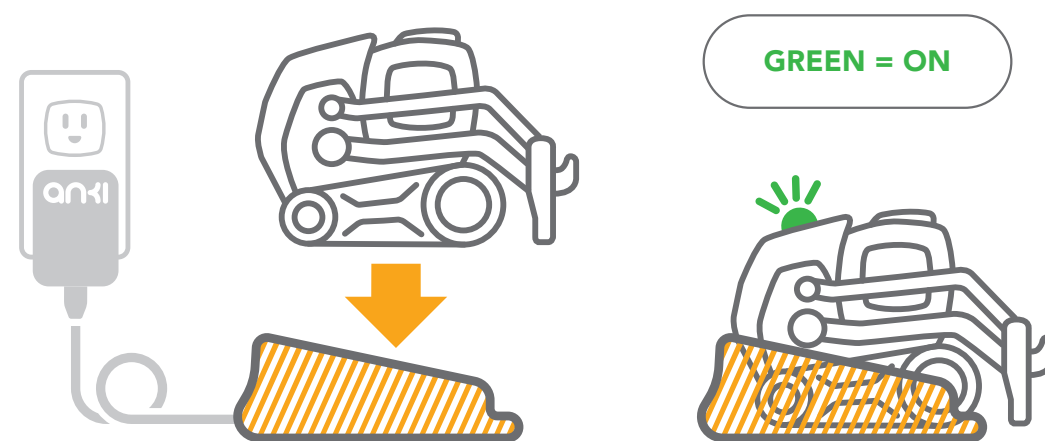


A clean, open, indoor space to play

## 1 Download the Cozmo app.



## 2 Power up your Cozmo.

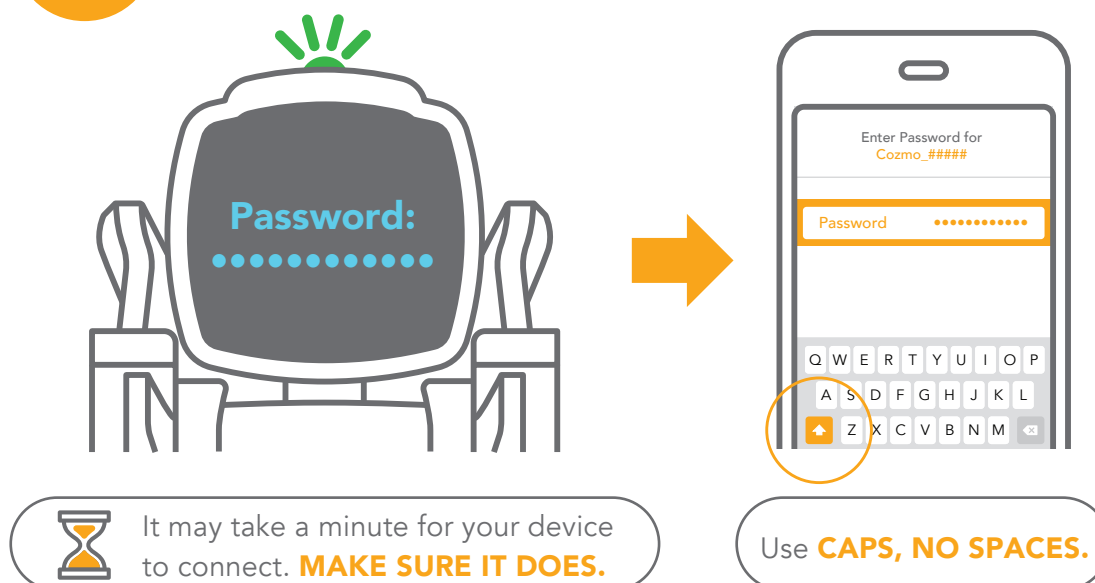


## 3 Connect to Cozmo.



If you don't see your Cozmo in the list, turn **AIRPLANE MODE ON AND OFF AND WAIT UP TO A MINUTE.**

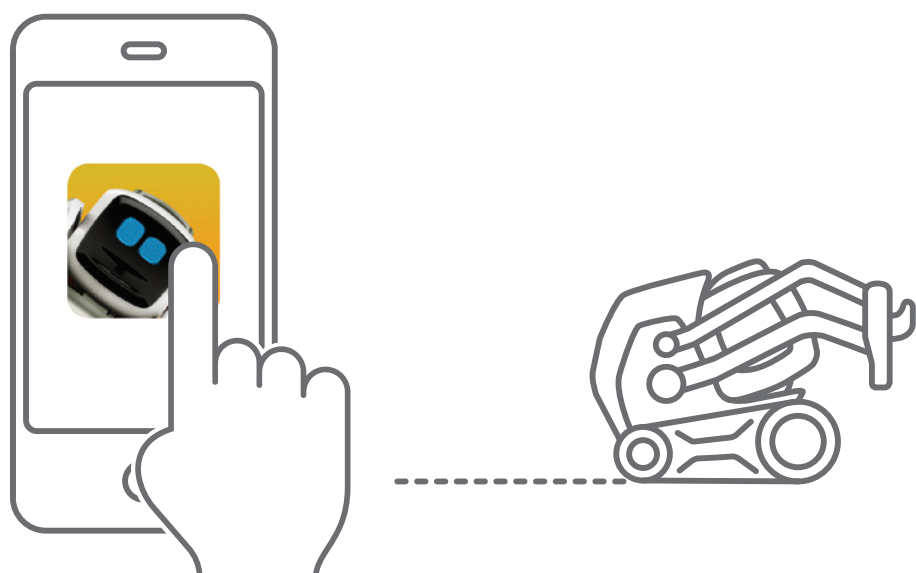
## 4 Enter password.



It may take a minute for your device to connect. **MAKE SURE IT DOES.**

Use **CAPS, NO SPACES.**

## 5 Launch app and enjoy!



## ? Troubleshooting.

- Turn Airplane mode on and off.
- Remove then replace Cozmo on his charger, then repeat Steps 3 & 4.
- Raise and lower Cozmo's lift to see WiFi information.

Get more helpful information at [anki.com/support](http://anki.com/support)