

ModMic 5 PRO TIPS



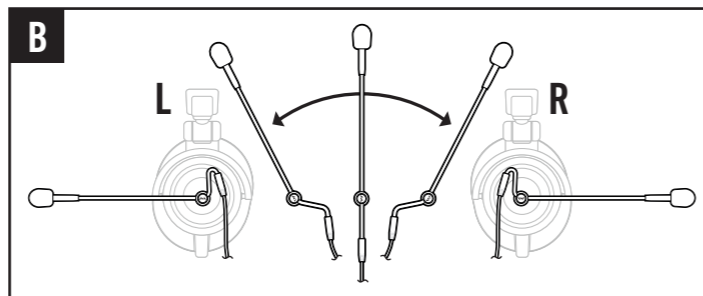
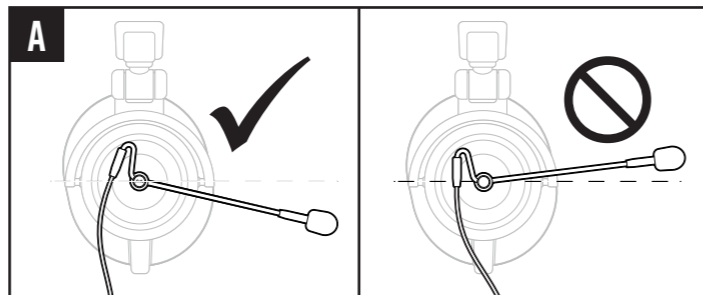
Surface Choice

Find a flat spot on the headphones for the 0.5" circle of adhesive. The adhesive will stick to smooth and mesh surfaces but does not stick well to rubberized surfaces.

1. Put the headphones on to ensure the ModMic will reach the corner of your mouth from the desired mounting point.
2. Thoroughly clean and dry the surface with the included alcohol pad.

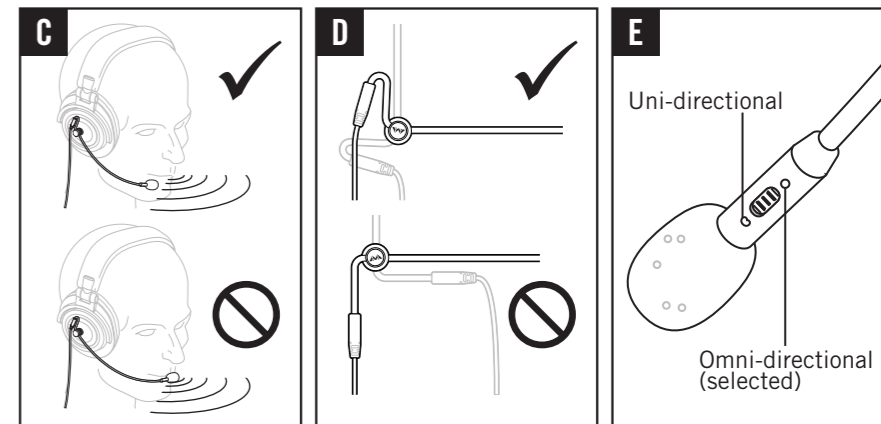
Attaching & Orientation

1. Attach a base clasp to the top clasp that holds the ModMic's boom.
2. Remove the protective backing from the adhesive.
3. While holding the top clasp, orient the mic boom angle down so it points towards where your mouth will be when using your headphones. (This will reduce the need for additional bends in the boom after installation (see figure A).
4. Press the whole mic/clasp down onto the cleaned spot and hold firmly for 30 seconds. (For best results on irregular surfaces, allow the adhesive to cure for 1 hour)
5. **To reverse the orientation of the boom** from right to left, do not remove the boom from the clasp but simply re-bend the cable end of the boom downward in the opposite shape (see figure B).
6. Configure your ModMic with your choice of cable lengths and the included mute switch module.



Getting the most from your ModMic 5

1. The mic is sensitive to plosive blast/wind from your mouth, especially P's (see figure C).
2. To lessen unwanted cable torque on the clasp, fold the cable end of the boom so that it is close to the clasp (see Figure D).
3. Ensure the mic switch on the boom is pointed towards your mouth (see Figure E for detail).



Do you need a little more help?

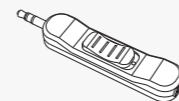
Here are some common troubleshooting steps that may help you out.

1. Ensure the mute switch is in the unmuted position. (The switch should be switched up towards your mouth)
2. Make sure you have the ModMic selected as your default listening device in your recording devices options.
3. Try multiple ports on your computer/device if you're having audio quality issues.
4. Check to make sure all of your audio drivers are up-to-date. Check online for any known issues with your motherboard's onboard sound and microphones.
5. If you need additional help contact us at customerservice@antlionaudio.com
6. Some wireless routers will cause interference if close to the mic/cable.

Parts List



One ModMic 5 modular microphone set



Antlion mute switch module



1m & 2m cables, each with 3.5mm jack



Carrying case & instruction manual



Two base clasps, one top clasp with cap & extra 3M adhesives



One foam pop filter



2m cable wrap & 10 cable clips

www.AntlionAudio.com Facebook: [AntlionAudio](https://www.facebook.com/AntlionAudio) Twitter: [@AntlionAudio](https://twitter.com/AntlionAudio)

For more information/extra clasps/questions/feedback visit www.modmic.com Designed in Portland, Oregon. Manufactured in China. ModMic and Antlion logo are trademarks of GTDevice LLC. U.S. and International patents