

# AICOK

Model:LW-3316B



## User Manual

Hand Blender

## **IMPORTANT SAFEGUARDS :**

When using electrical appliances especially when children are present, basic safety precautions should always be followed, including the following:

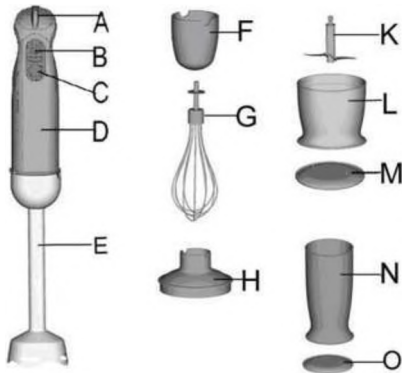
1. Read all instructions before using.
2. To protect against electrical shock, do not submerge the mixer or allow AC cord to come in contact with water or other liquids.
3. Unplug from outlet when not in use, before putting on or taking off parts, and before cleaning.
4. If the supply cord is damaged, it must be replaced by the manufacturer, its service agent or similarly qualified persons in order to avoid a hazard.
5. Do not use outdoors.
6. Do not let cord hang over edge of table or counter or touch hot surfaces, including the stove.
7. Always unplug the appliance before assembling, disassembling, cleaning.
8. Switch off the appliance and disconnect from supply before changing accessories or approaching parts that move in use.

9. Blades are sharp. Handle carefully.
10. Before plugging into a socket, check whether your voltage corresponds to the rating label of the appliance.
11. Don't plug the appliance into the power supply until it is fully assembled and always unplug before disassembling the appliance or handle the blade.
12. The product can only be used for the stated intended purpose. It is not intended for other purpose. Do not misuse the product. It may have potential injury from misuse
13. Don't let the motor unit, cord, or plug get wet.
14. Don't place the appliance in the hot ingredients.
15. The appliance is constructed to process normal household quantities.
16. Short-time operating. Use the appliance for no longer than 1 minute, and don't operate hard food for no longer than 10 seconds.

17. If you press switch I, you can run the inching switch to meet your request. But the switch II is immutable.
18. Always disconnect the blender from the supply if it is left unattended and before assembling, disassembling or cleaning.
19. It shall warn of potential injury from misuse
20. They shall state that care shall be take when handling the sharp cutting blades, emptying the bowl and during cleaning.
21. Switch off the appliance and disconnected from supply before changing accessories or approaching parts which move in use.
22. Appliances can be used by persons with reduced physical, sensory or mental capabilities or lack of experience and knowledge if they have been given supervision or instruction concerning use of the appliance in a safe way and if they understand the hazards involved.
23. Children shall not play with the appliance.

24. Keep hands and utensils out of the container while blending / away from the cutting blade while chopping food to prevent the possibility of severe injury to persons or damage to the unit. A scraper may be used but must be used only when the unit is not running.
25. This appliance shall not be used by children. Keep the appliance and its cord out of reach of children.
26. Do not misuse the product. It may cause injury if misuse.
27. Care shall be taken when handling the sharp cutting blades, emptying the bowl and during cleaning.
28. This appliance is intended to be used in household and similar applications such as:
  - Staff kitchen areas in shops, offices and other similar working environments;
  - in agricultural working environments;
  - By customers in hotels, motels etc. and similar establishments;
  - in bed-and breakfast type environments.
29. Be careful if hot liquid is poured into the food processor as it can be ejected out of the appliance due to a sudden steaming.

## Know Your Hand Blender

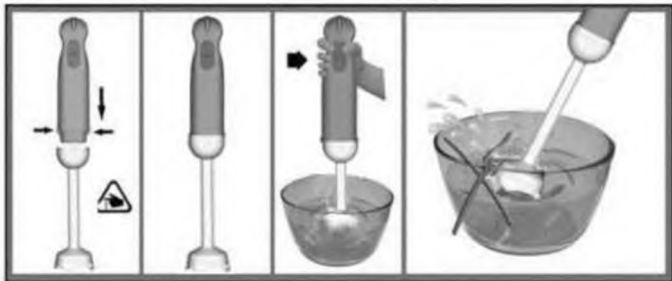


### Description:

- A. Inching switch
- B. Switch I
- C. Switch II
- D. Motor unit
- E. Blender stick
- F. Whisk holder
- G. Whisk

- H. Chopping bowl lid
- K. "S" blade
- L. 500ml chopping bowl
- M. Anti-slip pad
- N. 800 ml Beaker
- O. Anti-slip pad

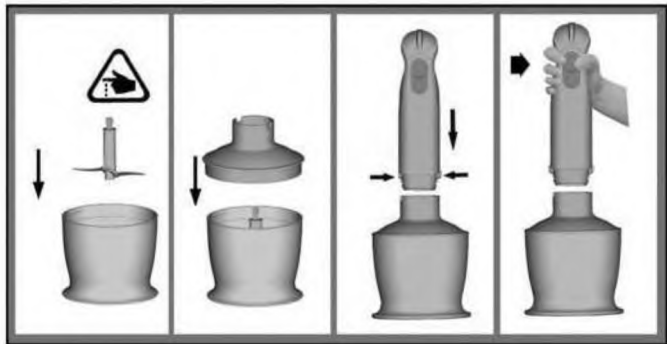
## How to use the hand blender



The hand blender is perfectly suited for preparing dips, sauces, soups, mayonnaise and baby food as well as for mixing and milkshakes.

1. Turn the blender stick on the motor unit until it locks.
2. Introduce the hand blender in the vessel. Then choose speed and press the switch I or switch II to operate it.
3. Turn the blender stick off the motor unit after use. You can use the hand blender in the measuring beaker and just as well in any other vessel.
4. Use the hand blender for no longer than 1 minute
5. Caution: The blade is very sharp!
6. Caution: Don't operate food without water!

## How to use the chopper



1. Chopper is perfectly suited for hard food, such as chopping meat, cheese, onion, herbs, garlic, carrots, walnuts, almonds, prunes etc.
2. Don't chop extreme | y hard food, such as ice cubes, nutmeg, coffee beans and grains.

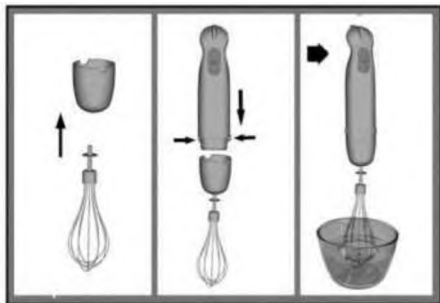
### **Before chopping...**

1. Carefully remove the plastic cover from the blade.  
**Caution: the blade is very sharp!** Always hold it by the upper plastic part.
2. Place the blade on the center pin of the chopper bowl. Press down the blade and lock bowl. Always place the chopper bowl on the anti-slip base.
3. Place the food in the chopper bowl.
4. Place the chopping bowl lid on the chopper bowl.
5. Turn the motor unit on the chopping bowl lid until it

locks.

6. Choose speed and press switch I or switch II to operate the chopper. During processing, hold the motor unit with one hand and the chopper bowl the other.
7. After use, turn the motor unit off the chopping bowl lid.
8. Then remove the chopping bowl lid. Carefully take out the blade.
9. Carefully take out the blade.
10. Remove the processed food from the chopper bowl.
11. Don't operate hard food for no longer than 10 seconds.

## How to use the whisk



Use the whisk only for whipping cream, beating egg whites and mixing sponges and Ready-mix desserts.

1. Inset the whisk into the whisk holder, and then turn the gear box on the motor unit until it locks.

2. Place the whisk in a vessel and only then. Choose Speed and press the switch I or switch H to operate it.
3. Use the whisk for no longer than 2 minute.
4. Turn the gear box off the motor unit after use. Then pull the whisk out of the gear box.

## **Cleaning**

Cleaning the motor unit and chopping bowl lid only with a damp cloth only. **Do not immerse the motor unit in water!**

1. All other parts can be cleaned in the dish washer. However, after processing very salty food, you should raise the blades right away.
2. Also, be careful not to use an overdose of cleaner or decalcifier in your dishwasher.
3. When processing food with color, the plastic parts of the appliance may become discolored wipe these parts with vegetable oil before placing them in the dishwasher.
4. The blades are very sharp, please attention.
5. Unplug the appliance before cleaning

## Processing Guide

<b>500ml chopper bowl</b>		
<b>Food</b>	<b>Maximum</b>	<b>Operation time</b>
meat	250g	8sec
herbs	50g	8sec
nut	100g	8sec
cheese	100g	5sec
bread	80g	5sec
onions	150g	8sec
biscuits	150g	6sec
soft fruit	200g	6sec
Flour	400g	10sec
Water	280g	
Bam	8g	
Sugar	8g	
Salt	8g	