

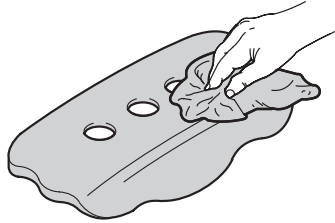
PARLOS[®]

Installation Guide

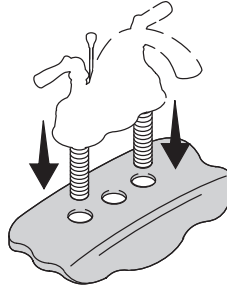
Please contact **PARLOS[®]** first ,
If you have any questions or need help.
Market@parlos.com



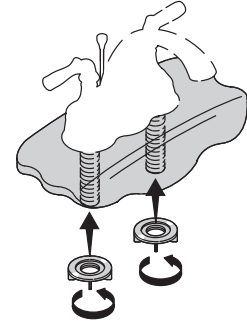
1 Clean the sink surface.



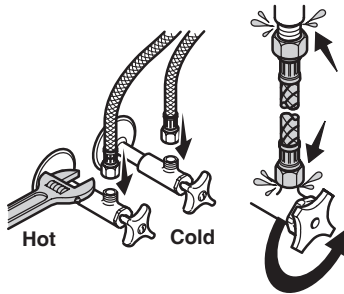
2 Insert the faucet.



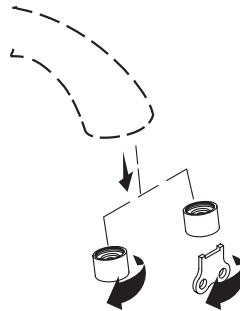
3 Tighten the mounting nuts.



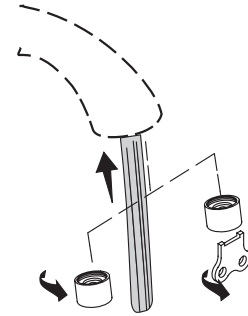
4 Connect and tighten the supply hoses.
Check for leaks.



5 Remove the aerator. Flush the lines.



6 Reinstall the aerator.



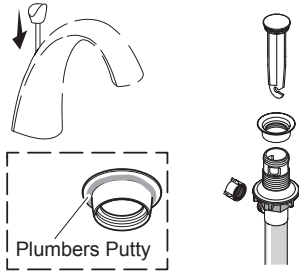
PARLOS®

Installation Guide

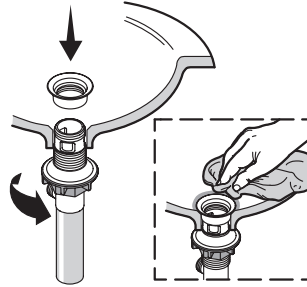
Please contact **PARLOS®** first ,
If you have any questions or need help.
Market@parlos.com



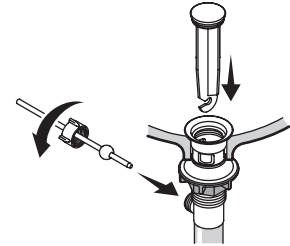
1 Insert the lift rod.
Disassemble the drain. Apply plumbers putty to the underside of the flange.



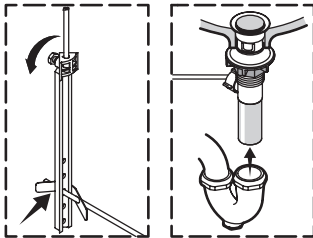
2 Install the flange. Tighten the nut.
Wipe away excess plumbers putty.



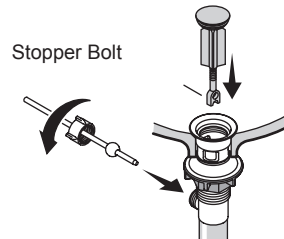
3 Type 1: Insert the stopper.
Then insert the rod and tighten the nut.



4 Attach the lift rod.
Reattach the spring clip.
Tighten the screw with a wrench.
Connect the trap to the tailpiece.



5 Type 2: Insert the rod and tighten the nut.
Then insert the stopper.
Turn the stopper bolt to adjust the height.



6 Tighten the thumbscrew.
Connect the lift rod using the spring clip.
Connect the trap to the tailpiece.

