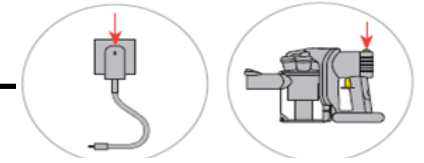


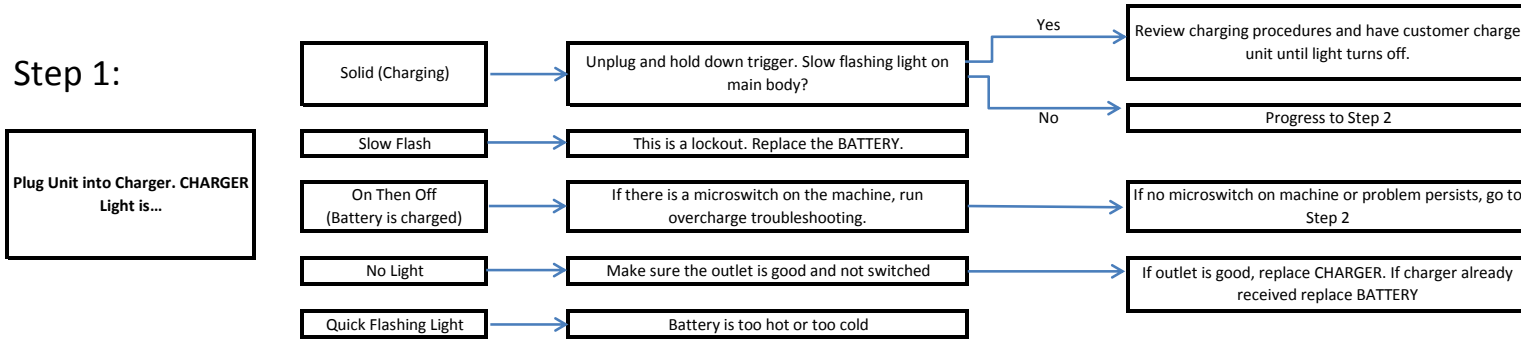
# Handheld Troubleshooting for DC31/DC34/DC34/DC44

Complaint: No Power/Not Turning on/Battery Not Holding a Charge/Trigger Broken  
 Key Fact: Machine is not turning on at all.

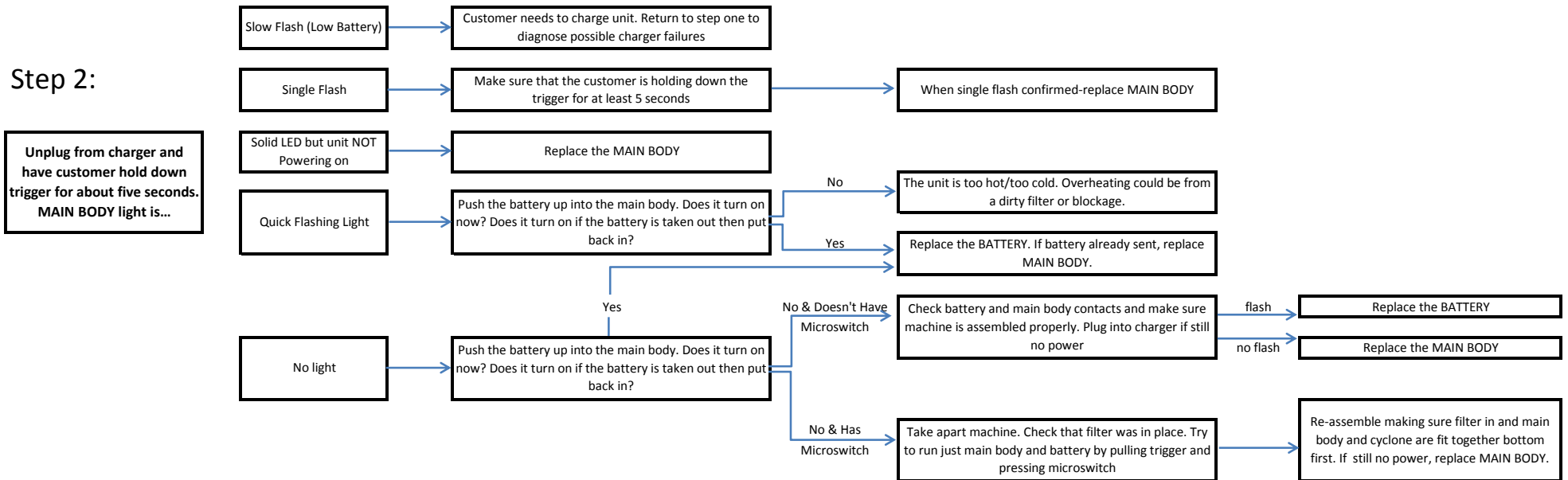


Make sure that the customer is clear about which indicator light they are speaking about. Many misdiagnoses happen because of this

## Step 1:

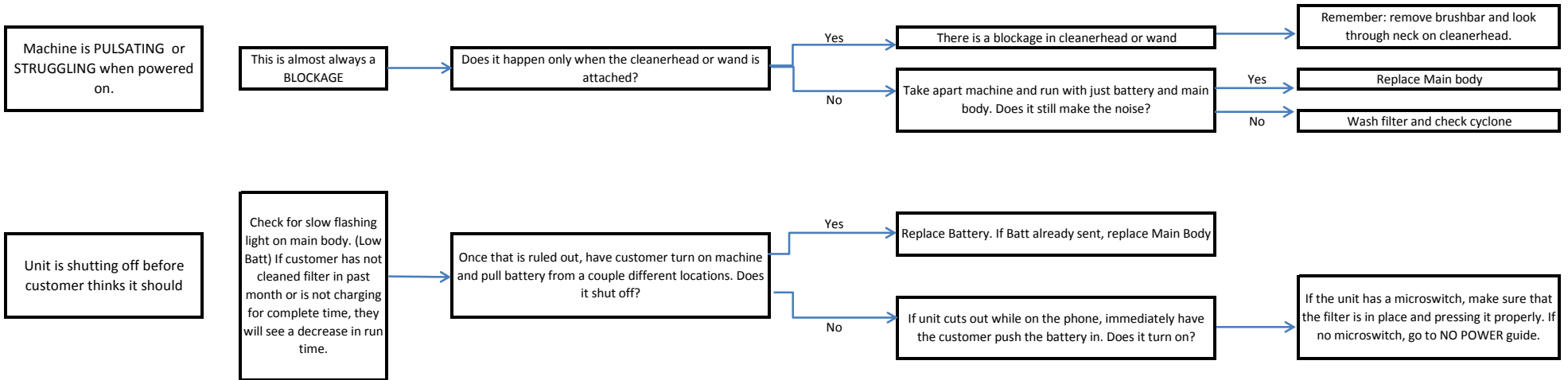


## Step 2:



## Handheld Troubleshooting for DC31/DC34/DC34/DC44

Complaint: Unit Cuts Out/Battery Run Time Low/Intermittent Power  
 Key Fact: Machine is turning off before customer thinks it should.



## Brushbar Spinning Related Issues (DC35, DC44, and Animal Variants)

