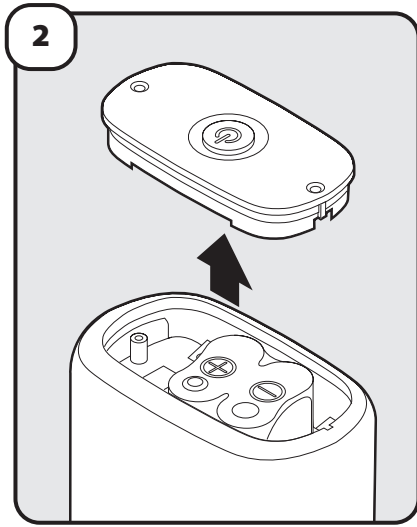
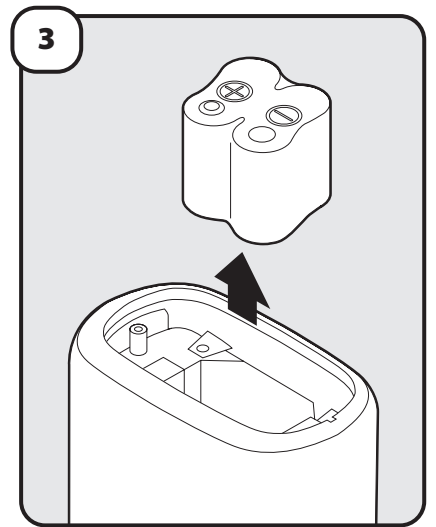


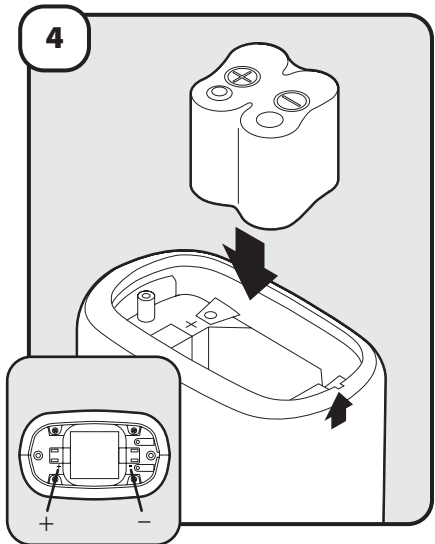
1 Turn lamp upside down. Remove screws from battery cover.



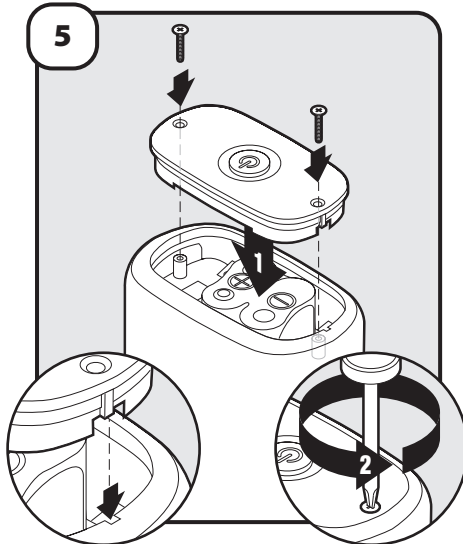
2 Remove battery cover from unit.



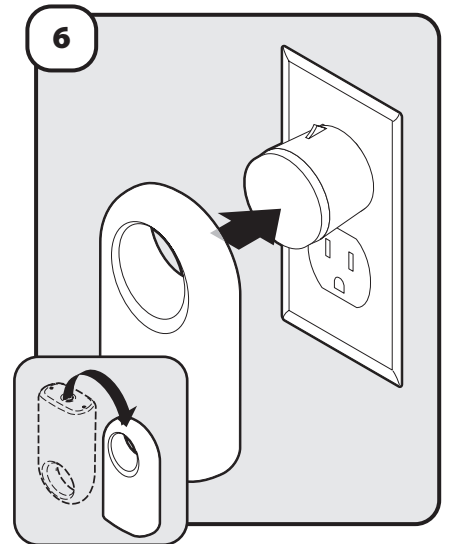
3 Remove battery.



4 Install new battery. Make sure indentation on side of unit is closest to the negative (-) battery terminal for correct orientation.



5 Replace battery cover and screws. Use indentation on side of battery cover for correct orientation.



6 Turn lamp right side up. Place lamp onto nightlight.