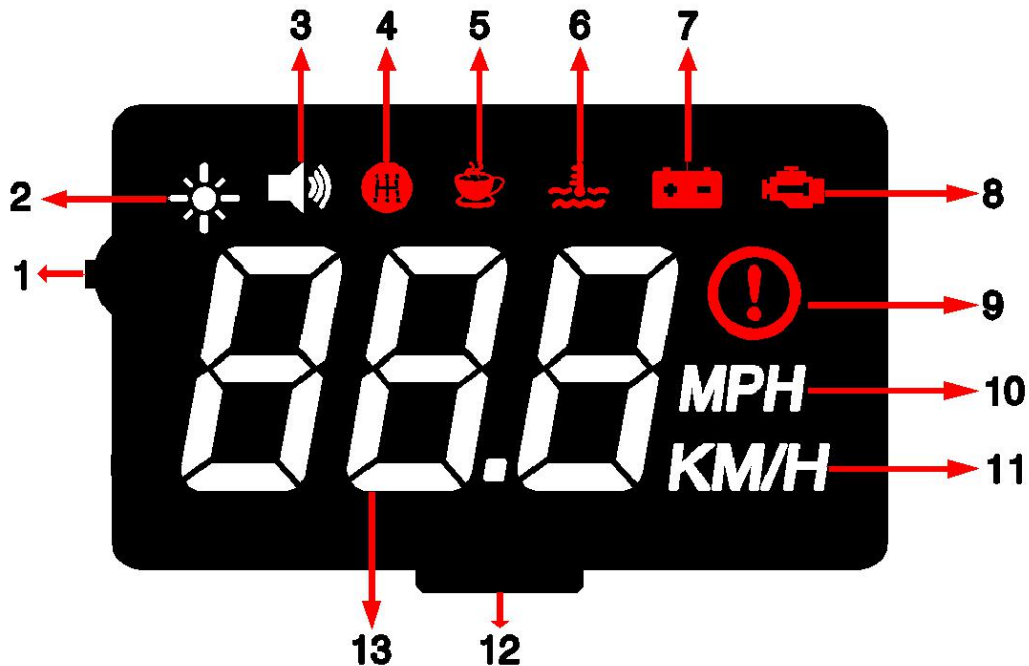


# Head-up Display (HUD-A100S)

## Use Instructions

### Product Overview:



- |  |                          |                           |
|--|--------------------------|---------------------------|
| 1.Thumbwheel key   | 2.Photosensitive element | 3.Audible prompt          |
| 4.Shifting prompt  | 5.Fatigue prompt         | 6.Water temperature alarm |
| 7.Voltage alarm  | 8.Fault alarm            | 9.Overspeed alarm         |
| 10.Speed in MPH  | 11.Speed in KM/H         | 12.data connection port   |
| 13.Multi-functional display area (speed/water temperature/voltage/driving mileage) |                          |                           |

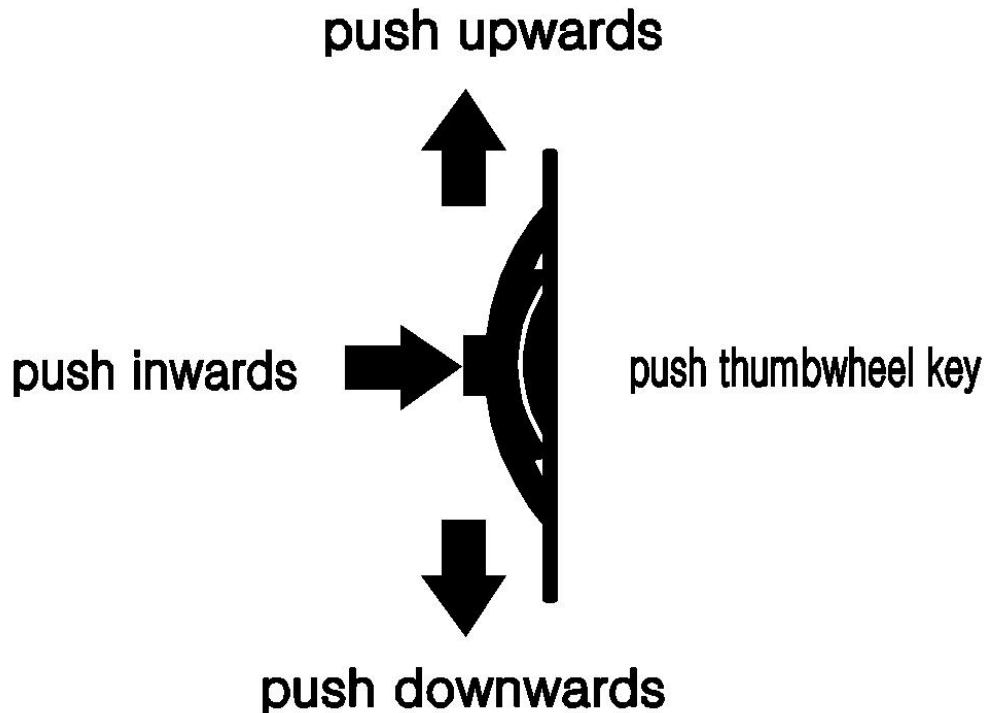
### Installation procedure:

1. With the vehicle uninitiated, connect one end of the OBD cable with HUD device.
2. Connect the other end of the OBD cable with OBD connector on the vehicle.
3. Initiate the vehicle.

## **Introduction to the keys:**

When the vehicle is in normal situation (displayed speed is 0KM/H):

1. Push the thumbwheel key upwards to adjust the alarm value for overspeed (default 100, adjustable between 40 to 250)
2. Push the thumbwheel key downward to shift to display of speed, voltage and water temperature (default display is speed)



## **Introduction to setting mode:**

Hold down the thumbwheel key until the screen is fully lit, then release the key to enter setting mode. The screen will then display parameter 1. You can push the thumbwheel key upwards or downwards to select other parameters (1.-13.). After selected the parameter, press inwards the thumbwheel key to enable setting of such parameter, and then push upwards or downwards the thumbwheel key to change the parameter. After that, press inwards the thumbwheel again to return to parameter view (1. - 13.), and then hold down the thumbwheel key until the screen displays the voltage of the battery. The setting is completed.

Tips: 1. Set only when the vehicle is uninitiated; 2. Set with observing the number displayed on the windshield.

parameters	Introduction to the numbers
1. Select speed unit	Default option 0, 0: KM/H, 1: MPH.
2. Vehicle speed calibration factor	Default 108. Adjustable range: 80 - 120.
3. Shifting prompt	Default 75, (i.e., shifting prompt at 7500 r/m), adjustable range (15~75)
4. Fatigue prompt	Default 8 hours. Adjustable range: 0 - 8 hours.
5. Water temperature alarm	Default 140. Adjustable range: 90 - 140.
6. Audible prompt	Default 1. 0: buzzer OFF; 1: buzzer ON.
7. Brightness adjustment	Default 0. 0: automatic photosensitive; 1: dimmest; 7: brightest
8. Alarm switch	Default 1. 0: OFF; 1: ON
9. Detect engine fault	Default 2. 0: ON; 1: clear automatically upon initiation 2. OFF
10. Voltage alarm	Default 100 (10.0V). Adjustable range: 100 - 130.
11. Transport protocol selection	Default 0. 0: automatic select 1-8: manual select
12. Restore factory settings	Default 0. 0: OFF .1: ON
13. Select car category	Default 0. 0: normal. 1-2: special