

Product Datasheet

TMEM26 Antibody NBP2-27334SS

Unit Size: 0.025 mg

Store at 4C short term. Aliquot and store at -20C long term. Avoid freeze-thaw cycles.

www.novusbio.com



technical@novusbio.com

Publications: 2

Protocols, Publications, Related Products, Reviews, Research Tools and Images at:
www.novusbio.com/NBP2-27334

Updated 10/23/2016 v.20.1

Earn rewards for product
reviews and publications.

Submit a publication at www.novusbio.com/publications

Submit a review at www.novusbio.com/reviews/destination/NBP2-27334



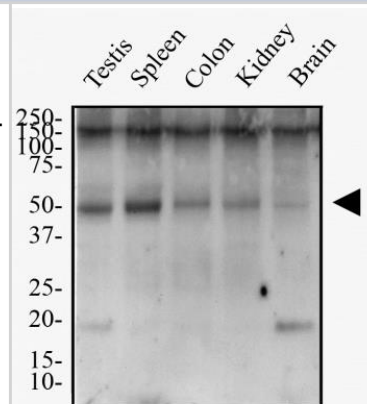
NBP2-27334SS**TMEM26 Antibody**

Product Information	
Unit Size	0.025 mg
Concentration	1.0 mg/ml
Storage	Store at 4C short term. Aliquot and store at -20C long term. Avoid freeze-thaw cycles.
Clonality	Polyclonal
Preservative	0.05% Sodium Azide
Purity	Protein A purified
Buffer	0.1 ml PBS
Product Description	
Host	Rabbit
Gene ID	219623
Gene Symbol	TMEM26
Species	Human
Reactivity Notes	The amino acid sequence used as immunogen is 100% homologous in human, 89% homologous in chimpanzee and 73% homologous in monkey.
Immunogen	A portion of amino acids 300-350 of human Tmem26 was used as the immunogen.
Product Application Details	
Applications	Western Blot, Simple Western, Flow Cytometry
Recommended Dilutions	Western Blot 1-2ug/ml, Simple Western 1:20, Flow Cytometry
Application Notes	In Simple Western only 10-15 uL of the recommended dilution is used per data point.



Images

Western Blot: TMEM26 Antibody [NBP2-27334] - Total protein from Human Testis, Spleen, Colon, Kidney and Brain was separated on a 12% gel by SDS-PAGE, transferred to PVDF membrane and blocked in 5% non-fat milk in TBST. The membrane was probed with 2.0 ug/ml anti-TMEM26 in 1% milk, and detected with an anti-rabbit HRP secondary antibody using chemiluminescence.



Simple Western: TMEM26 Antibody [NBP2-27334] - Simple Western lane view shows a specific band for TMEM26 in 0.5 mg/ml of Human Brain lysate. This experiment was performed under reducing conditions using the 12-230 kDa separation system.



Publications

Liu PS, Lin YW, Lee B et al. Reducing RIP140 expression in macrophage alters ATM infiltration, facilitates white adipose tissue browning and prevents high fat diet-induced insulin resistance. *Diabetes*. 2014 Jun 26 [PMID: 24969109] (IHC-P, Mouse)

Details:

Figs S2-S4: White adipose tissue. TMEM26 was used as a marker of beige fat.

Wu J, Boström P, Sparks LM et al. Beige adipocytes are a distinct type of thermogenic fat cell in mouse and human. *Cell*. 2012 Jul 20 [PMID: 22796012]



Novus Biologicals USA

8100 Southpark Way, A-8
Littleton, CO 80120
USA

Phone: 303.730.1950
Toll Free: 1.888.506.6887
Fax: 303.730.1966
novus@novusbio.com

Novus Biologicals Canada

461 North Service Road West, Unit B37
Oakville, ON L6M 2V5
Canada

Phone: 905.827.6400
Toll Free: 855.668.8722
Fax: 905.827.6402
canada@novusbio.com

Novus Biologicals Europe

19 Barton Lane
Abingdon Science Park
Abingdon, OX14 3NB, United Kingdom
Phone: (44) (0) 1235 529449
Free Phone: 0800 37 34 15
Fax: (44) (0) 1235 533420
info@bio-techne.com

General Contact Information

www.novusbio.com
Technical Support: technical@novusbio.com
Orders: orders@novusbio.com
General: novus@novusbio.com

Limitations

This product is for research use only and is not approved for use in humans or in clinical diagnosis. Primary Antibodies are guaranteed for 1 year from date of receipt.

For more information on our 100% guarantee, please visit www.novusbio.com/guarantee

Earn gift cards/discounts by submitting a review: www.novusbio.com/reviews/submit/NBP2-27334

Earn gift cards/discounts by submitting a publication using this product:
www.novusbio.com/publications

