

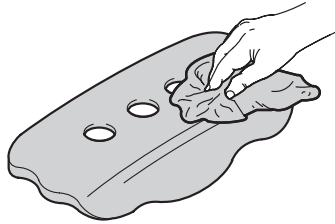
# PARLOS®

## Installation Guide

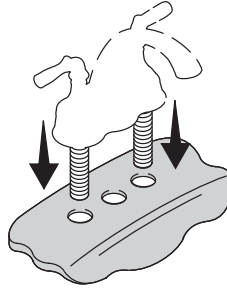
Please contact **PARLOS®** first ,  
If you have any questions or need help.  
Market@parlos.com



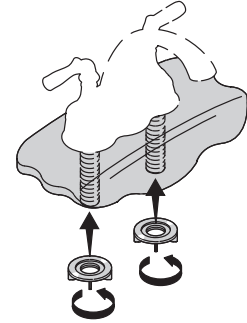
**1** Clean the sink surface.



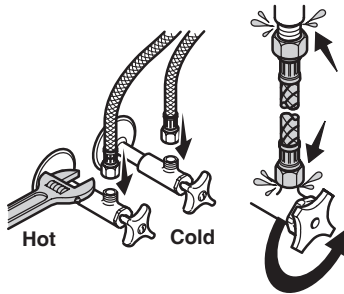
**2** Insert the faucet.



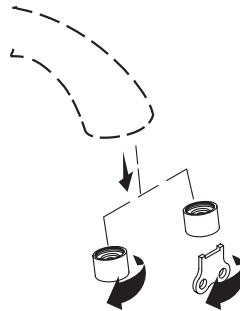
**3** Tighten the mounting nuts.



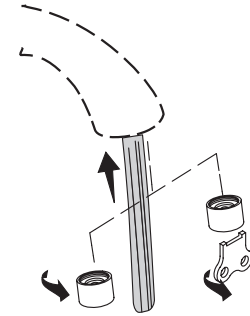
**4** Connect and tighten the supply hoses.  
Check for leaks.



**5** Remove the aerator. Flush the lines.



**6** Reinstall the aerator.



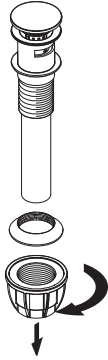
# PARLOS®

## Installation Guide

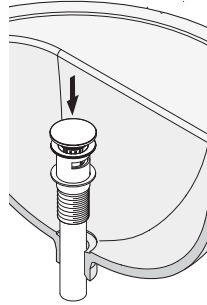
Please contact **PARLOS®** first ,  
If you have any questions or need help.  
Market@parlos.com



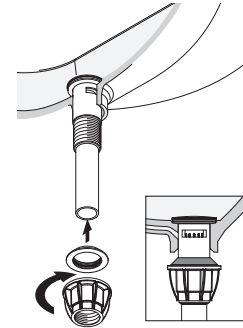
### 1 Save Components.



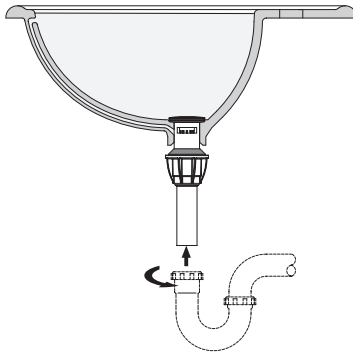
### 2 Do not use plumber's putty. It may damage seal.



### 3 Partially thread drain body to sink.



### 4 Connect to Drain



### 5 Firmly hand tighten nut Push to Activate

