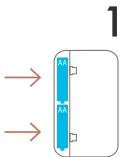


Installation

Install two AA batteries into the back of Switchmate



Download the free Switchmate App from the Google Play or Apple App store onto your phone



Compatibility:
iPhone 5 and above/iOS 8.0+

Android 4.4+

Launch the App and walk through the simple installation

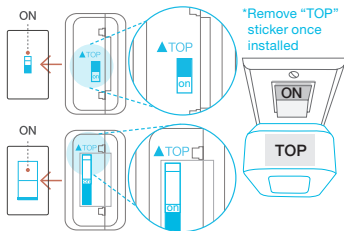


1

2

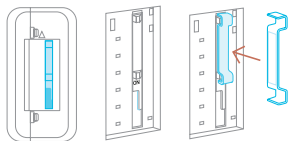
3

Snap Switchmate with the “top” sticker facing up - over your light switch with the light switch and the Switchmate in the “up/▲TOP position”



For rocker switches only

*note that most rocker light switches require the pre-installed adapter on the back of Switchmate, while a small number work better without. Detach the adapter from your rocker Switchmate if you are experiencing issues getting Switchmate to turn your light on and off. If this does not help, check that the screws holding your existing cover plate to the wall are fully tightened.



4

Troubleshooting

Q: I am having trouble getting my smartphone to connect to my Switchmate

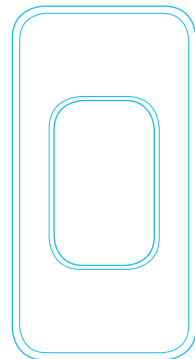
A: Different phones may behave differently when connecting to Switchmate. When experiencing difficulties, **TURN OFF WIFI** then try the following steps:

1. Close the Switchmate App and restart the App – try to connect
2. Turn Bluetooth off then on – try to connect
3. Restart Smartphone – try to connect
4. Reset Switchmate by taking the batteries out and put them back in – try to connect
5. Uninstall the App and download it again.

For further troubleshooting please contact us at:
www.SwitchmateHome.com/support



Finally, smart lighting made easy



QUICK START GUIDE

QSG 2017 April
Designed in California