

How to Mount Reolink IP camera RLC-422 and 422W

Step 1. Take out the mounting template and stick it to the roof/eave.

Drill the holes and insert the anchor into the holes.



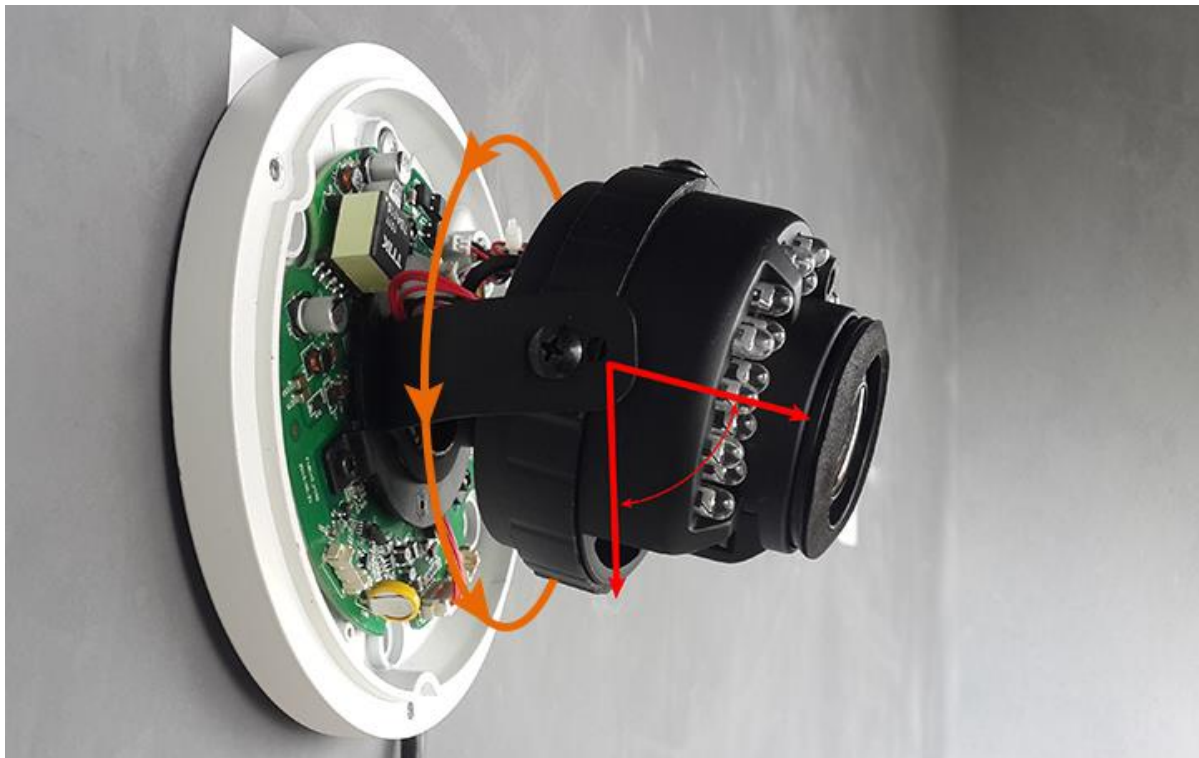
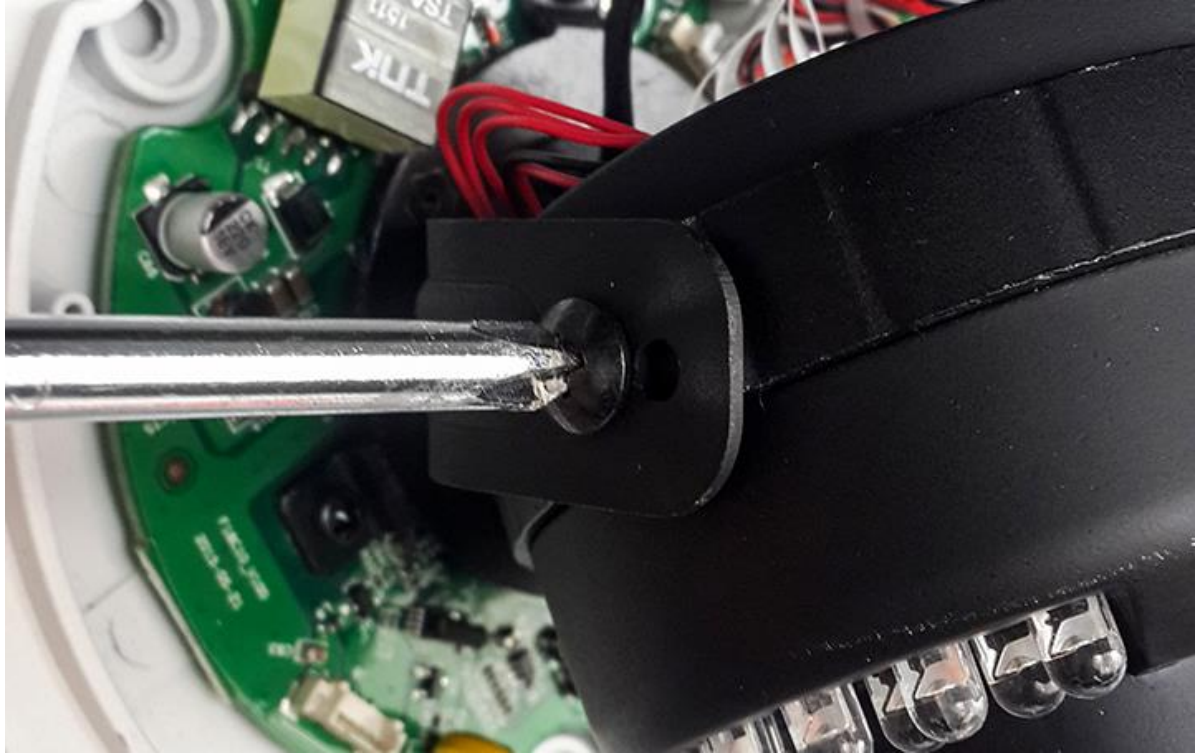
Step 2. Take out the mounting wrench, loose the three screws on the dome cover, and take the dome cover off.



Step 3. Take out the mounting screws, and screw in the camera holes to the roof or eave.



Step 4. Loose the screws on the two sides to adjust the camera shooting angle and cover it with the dome cover taken off in step two.





If you experience any problems, please [contact support@reolink.com](mailto:support@reolink.com) for further support.

Applies to:

RLC-422 RLC-422W