



Quick Setup Guide

Indoor 1080P FHD Security Camera



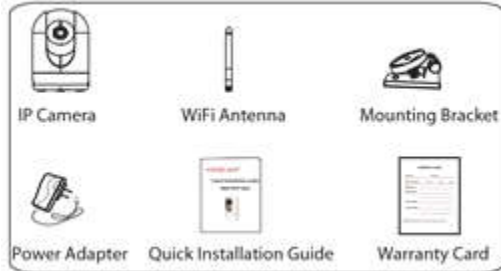
Model: R2/R4

You can download the Quick Setup Guide in other languages at <http://www.foscam.com/download/QIG.html>

Setting Up Your Foscam R2 Security Camera

A. Getting Started

Package Contents

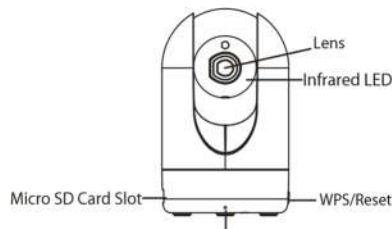


Security Tips

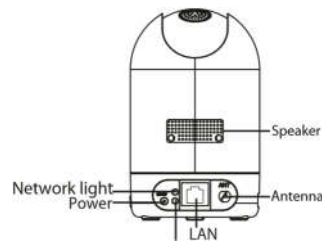
- Please change the password of your camera regularly, using a combination of numbers, letters and special characters.
- We recommend that you regularly update your camera to the latest available software and firmware versions in order to help ensure the best experience for your camera.

B. Physical Description

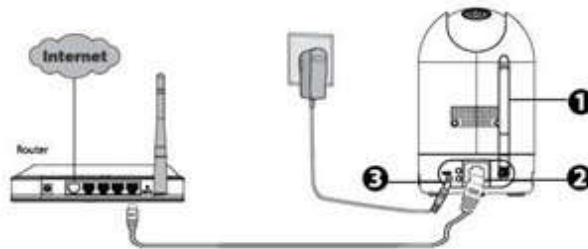
Front View



Rear View



C. Setting Up Your Camera: Wired Connection via Foscam App (Recommended)




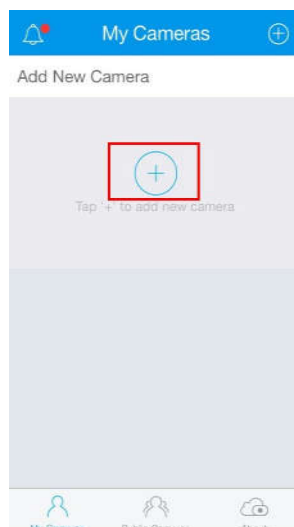
Note: We highly recommend that you first begin the setup process by connecting your camera to your Internet router with an Ethernet cable. After setup is successful, you'll be able to unplug the cable and login to your wireless network for WiFi operability.

Minimum Requirements: To help ensure a smoother video experience on the smartphone, it's recommended that your smartphone has the following:

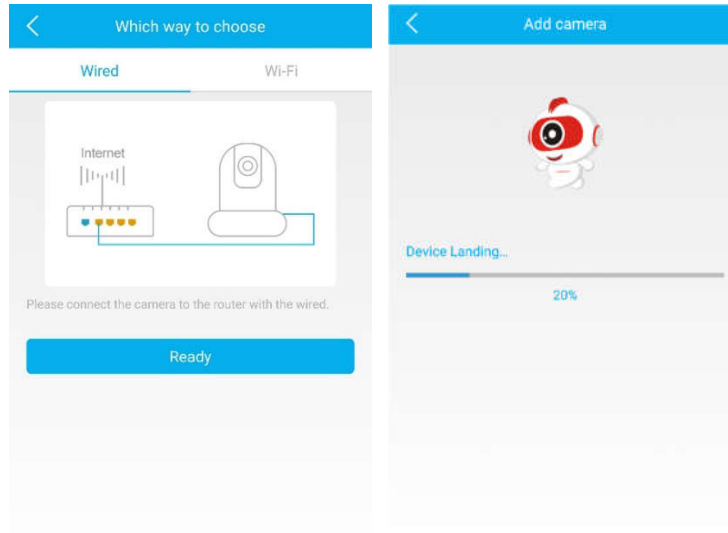
- iOS: version 8.1 or higher.
- Android: 4.1 or higher, using a device with a Graphics Processing Unit (GPU) function.

Camera Setup Steps

1. Please mount the antenna and make sure it is in a vertical upright position.
2. Connect the camera to your Internet router using an Ethernet cable.
3. Connect the power adapter to the camera, and wait for a few moments until the camera alerts you that the "Wired connection succeeded."
4. From your smartphone, search for "Foscam App"  via the App Store or Google Play Store. Download, install and open the app to begin configuration.
5. Under "My Cameras," select "Tap + to add new camera" and then scan the QR code, which is located at the bottom of your camera (see screenshots below).



- On the “Which way to choose” screen, confirm that “Wired” is underlined in blue (upper-left corner) and tap “Ready.” Wait a few moments for a message confirming that the setup process has been completed.



D. Connecting Your Camera Over WiFi

Once you’ve added your camera successfully using the wired connection method above, tap your live camera feed from the “My Cameras” screen → tap the gear in the upper-right → tap “Network” → tap the WiFi network you wish to connect to and enter your WiFi password. **Note:** You’ll need to connect to the 2.4GHz network if your wireless router is dual-band—most newer models have 2.4GHz and 5GHz channels (see screenshot below).



E. Other Ways to Access Your Camera

Foscam Cloud Service

You can access the camera via the Foscam Cloud website:

www.myfoscam.com

Some of the benefits of viewing your camera in the cloud:

- It's simple and convenient to remotely access and manage all your WiFi security cameras.
- Enjoy the latest features first through Foscam Cloud including cloud storage, video sharing, and more.
- Getting started is fast—if you have already registered an account through Foscam App, you can directly use your login credentials for Foscam Cloud.

Web User Interface (Firefox and Internet Explorer)

If you would like to manage your camera more professionally, we suggest you access your camera via browser. You can download the “**Equipment Search Tool**” from <http://foscam.com/download-center/software-tools.html> to your computer, then access the camera directly via Firefox or Internet Explorer.

Questions? For any issues that occur during the setup process, please write to tech@foscaminc.com or call (844) 344-1113—we're here to help!