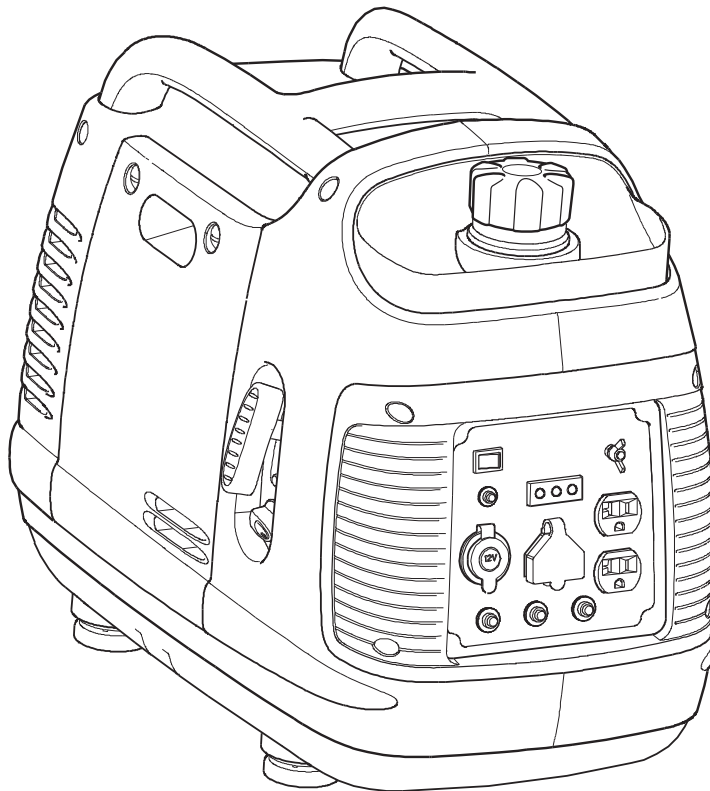




# *Illustrated Parts List*

## *Inverter Generator*



This generator is rated in accordance with CSA (Canadian Standards Association) standard C22.2 No. 100-94 (motor and generators).

Questions? Help is just a moment away!  
Preguntas? La ayuda es justa un momento lejos!

Call: Portable Generator Helpline

Llame: Línea Directa del Generador portátil - 1-800-743-4115 M-F 8-5 CST

### **Model / Modelo**

<b>Mfg. No.</b>	<b>Description / Descripción</b>
030651-00	Inverter Generator

**Manual Part No.** 1759944

Revision -

Rev. Date: 7/20/2015

Not for  
Reproduction

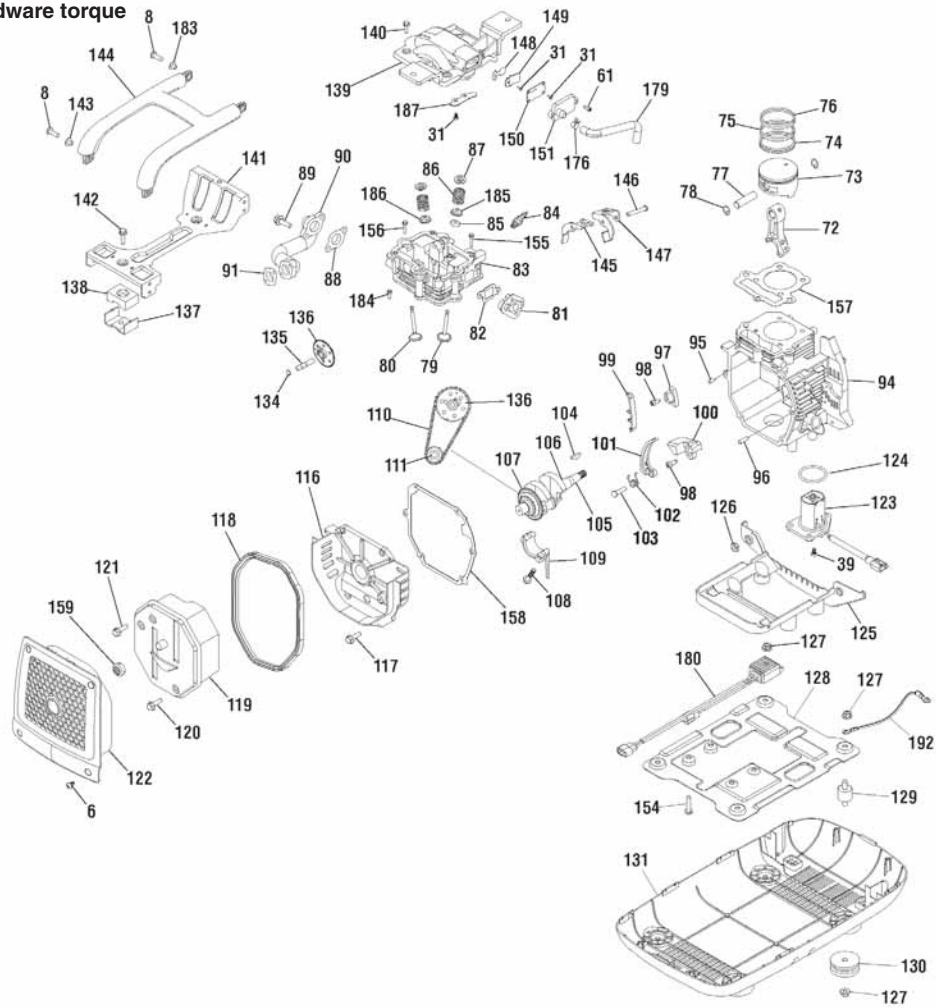
<b>PRODUCT COMPONENTS</b>	<b>PAGES</b>
Main Unit .....	4
Alternator & Control Panel .....	7
Engine .....	9
<b>Torque Specification Chart .....</b>	<b>Inside Back Cover</b>

Not for  
Reproduction

## Main Unit

80015609pg3

NOTE: Unless noted otherwise,  
use the standard hardware torque  
specification chart.



REF.	PART NO.	DESCRIPTION	REF.	PART NO.	DESCRIPTION
6	311379GS	SCREW	84	311419GS	SPARKPLUG
8	311381GS	BOLT	85	----	SEAL-VALVE OIL
31	----	BOLT	86	----	SPRING
39	311400GS	SCREW	87	----	SEAT-VALVE
61	----	SCREW	88	311420GS	GASKET
72	----	ROD	89	----	BOLT
73	----	PISTON	90	----	MUFFLER
74	----	RING	91	311421GS	GASKET-EXHAUST
75	----	RING	94	----	CRANKCASE
76	----	RING	95	----	PIN
77	----	PIN	96	----	PIN
78	----	RETAINER-PIN	97	----	BLOCK
79	----	VALVE-INTAKE	98	----	SCREW
80	----	VALVE-EXHAUST	99	----	BRACKET
81	311417GS	INSULATOR	100	----	BRACKET
82	311418GS	GASKET-INTAKE	101	----	ARM-TENSION
83	----	CYLINDER HEAD			

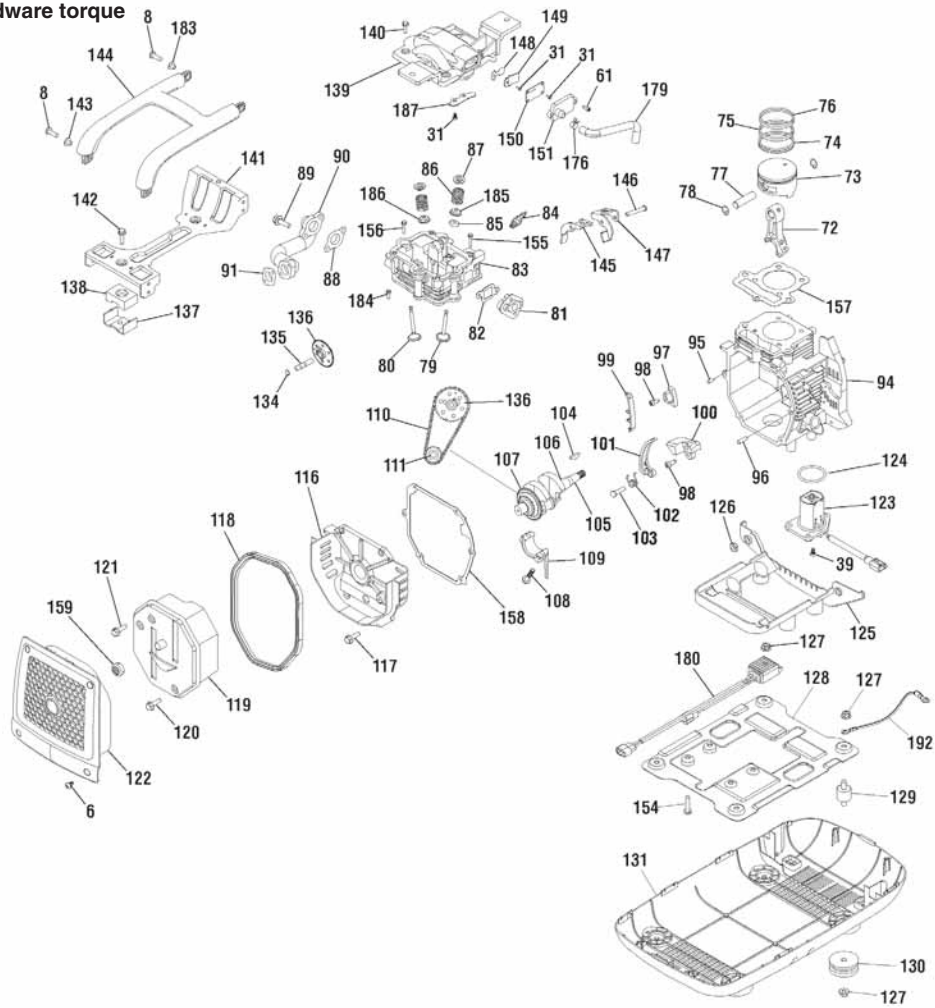
### Footnotes

The above parts group applies to the following Mfg. Nos.:

030651-00 - Inverter Generator

# Main Unit

NOTE: Unless noted otherwise, use the standard hardware torque specification chart.



REF.	PART NO.	DESCRIPTION	REF.	PART NO.	DESCRIPTION
102	----	SPRING	123	311423GS	SENSOR-OIL
103	----	PIN	124	314482GS	O-RING
104	----	KEY	125	----	COVER
105	----	CRANKSHAFT	126	----	NUT
106	----	BEARING	127	707919	NUT
107	----	GEAR	128	311425GS	BASE
108	----	BOLT	129	311426GS	MOUNT-VIBRATION
109	----	COVER	130	311427GS	MOUNT-VIBRATION
110	----	CHAIN	131	311428GS	COVER
111	----	WHEEL-CHAIN	134	----	O-RING
116	----	COVER-CRANKCASE	135	----	SHAFT
117	----	BOLT	136	----	CAM-ASSEMBLY
118	----	BLOCK-RUBBER	137	----	BRACKET
119	----	MUFFLER	138	----	MOUNT-VIBRATION
120	----	BOLT	139	314786GS	COVER-CYLINDER
121	----	BOLT	140	----	BOLT
122	311422GS	GUARD-MUFFLER	141	----	BRACKET

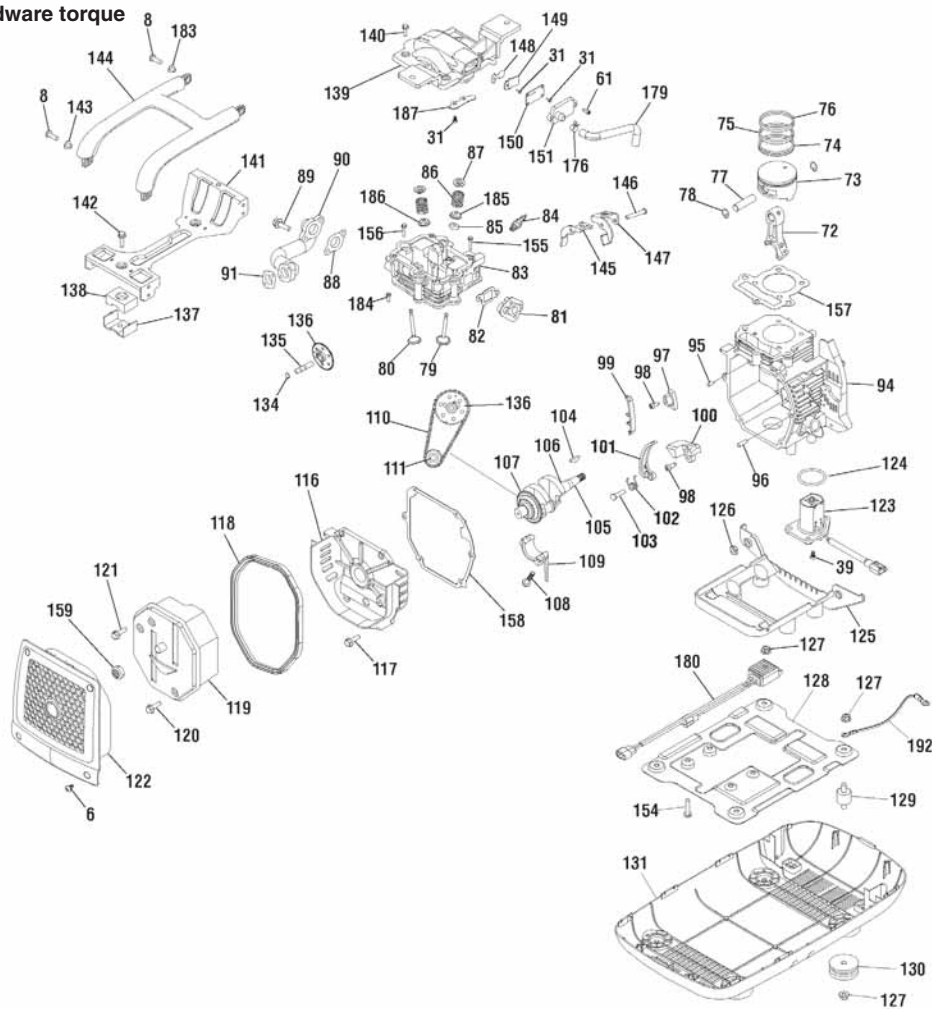
### Footnotes

The above parts group applies to the following Mfg. Nos.:  
**030651-00 - Inverter Generator**

## Main Unit

80015609pg3

NOTE: Unless noted otherwise,  
use the standard hardware torque  
specification chart.



REF.	PART NO.	DESCRIPTION	REF.	PART NO.	DESCRIPTION
142	----	BOLT	179	311446GS	TUBE-BREATHER
143	311431GS	BUSHING	180	311407GS	REGULATOR-VOLTAGE
144	311432GS	HANDLE	183	314478GS	BUSHING
145	----	ARM-EXHAUST VALVE	184	----	BOLT
146	----	PIN	185	----	SEAT
147	----	ARM-INTAKE VALVE	186	----	SEAT
148	314747GS	VALVE	187	----	PLATE
149	314748GS	BOARD-VALVE	192	314483GS	WIRE-GROUND
150	----	BOARD-VALVE			
151	----	BOARD-VALVE			
154	----	BOLT			
155	----	BOLT			
156	----	BOLT			
157	----	GASKET			
158	311435GS	GASKET-CRANKCASE			
159	315584GS	ARRESTOR-SPARK			
176	----	CLAMP			

### Footnotes

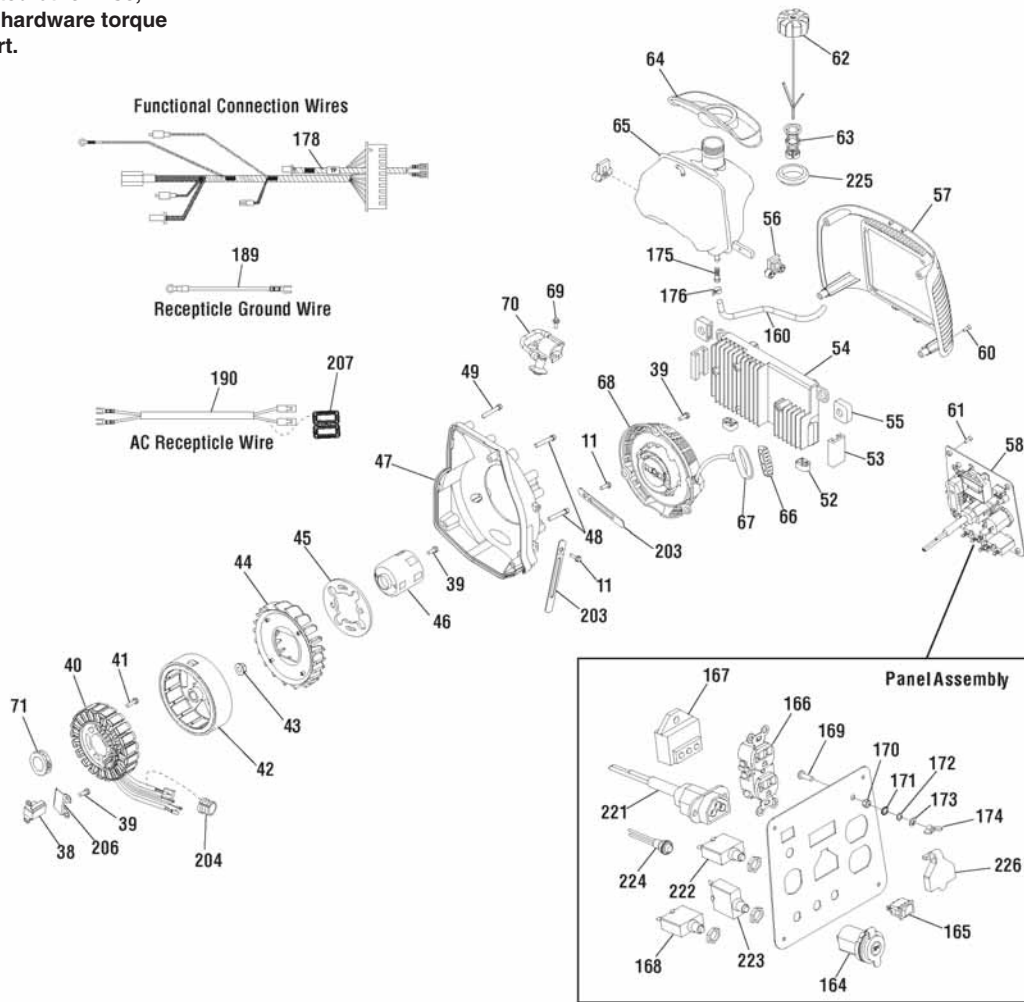
The above parts group applies to the following Mfg. Nos.:

030651-00 - Inverter Generator

# Alternator & Control Panel

80015609pg1

**NOTE:** Unless noted otherwise, use the standard hardware torque specification chart.



REF.	PART NO.	DESCRIPTION	REF.	PART NO.	DESCRIPTION
11	----	BOLT	56	----	MOUNT-VIBRATION
38	311399GS	TRIGGER-IGNITION	57	314529GS	COVER-PANEL
39	311400GS	SCREW	58	708077	PANEL-CONTROL
40	707590	STATOR	60	----	SCREW
41	311402GS	SCREW	61	----	SCREW
42	707591	ROTOR	62	317134GS	CAP-FUEL
43	311404GS	NUT	63	317441GS	FILTER-FILLER NECK
44	314701GS	FAN	64	707595	PAD-FUEL TANK
45	----	TERMINAL	65	707596	TANK-FUEL
46	311406GS	CUP-FLYWHEEL	66	311414GS	INSERT-GRIP
47	----	COVER-FAN	67	----	GRIP
48	----	BOLT	68	706058	STARTER-REWIND
49	----	BOLT	69	----	SCREW
52	----	MOUNT-VIBRATION	70	317436GS	COIL-IGNITION
53	----	MOUNT-VIBRATION	71	----	SEAL-OIL
54	707592	INVERTER	160	707167	HOSE-FUEL
55	----	MOUNT-VIBRATION			

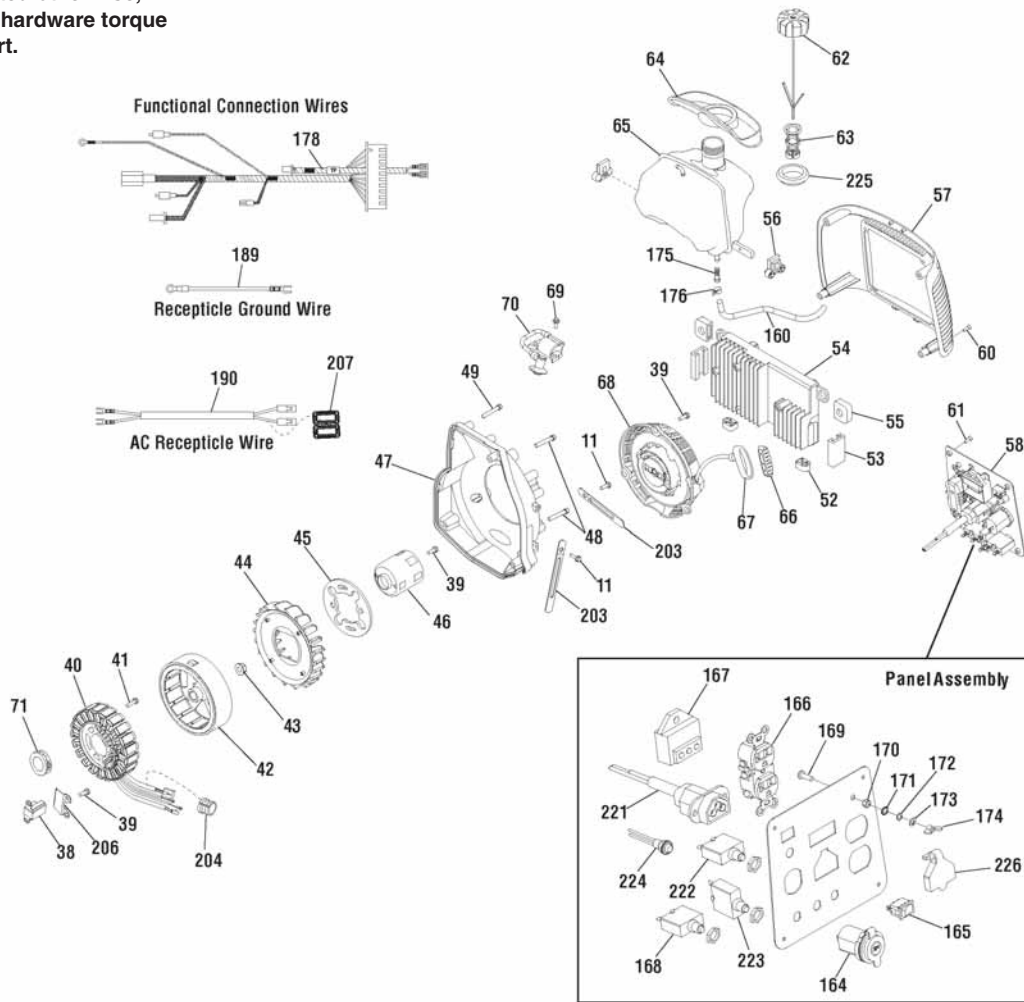
## Footnotes

The above parts group applies to the following Mfg. Nos.:  
**030651-00 - Inverter Generator**

# Alternator & Control Panel

80015609pg1

**NOTE:** Unless noted otherwise, use the standard hardware torque specification chart.



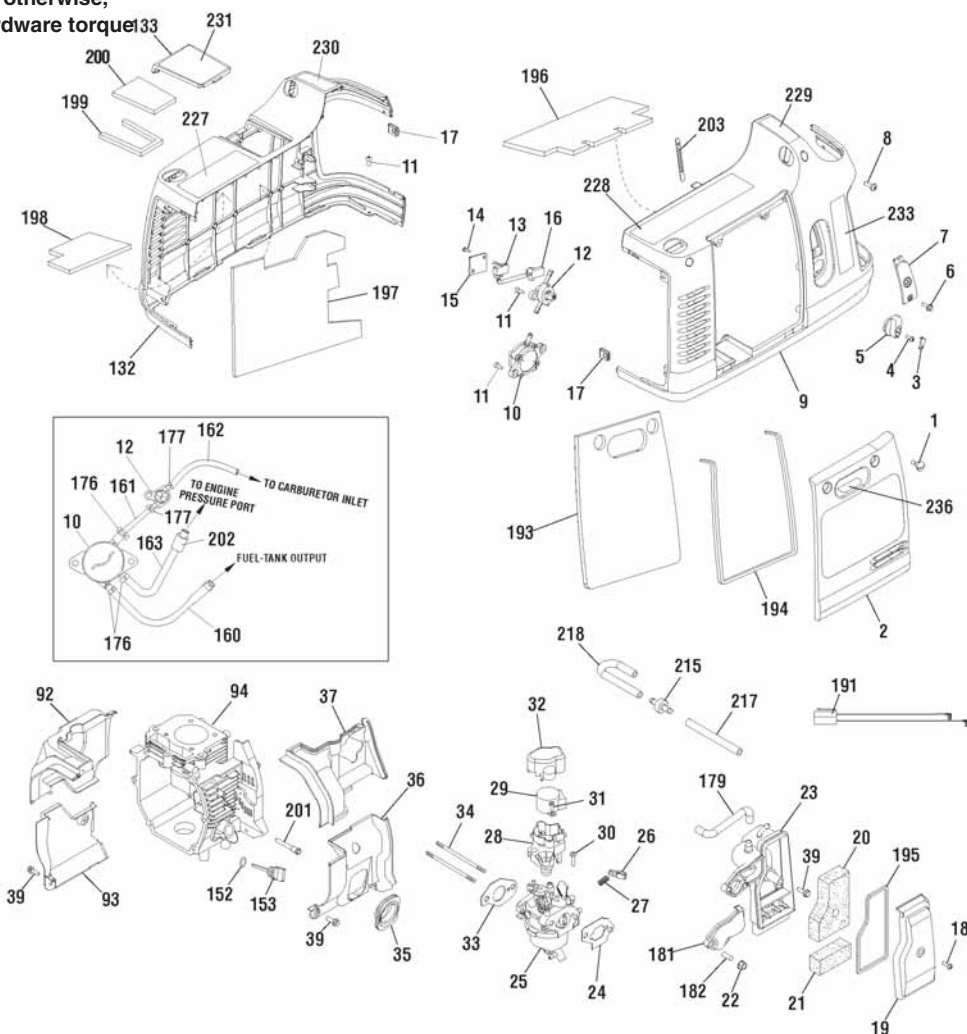
REF.	PART NO.	DESCRIPTION	REF.	PART NO.	DESCRIPTION
164	314531GS	OUTLET	204	----	COVER-RUBBER
165	311442GS	SWITCH	206	----	PROTECTOR BOARD
166	68759GS	OUTLET	207	317445GS	BEAD-FERRITE
167	311443GS	LIGHT-INDICATOR	221	705488	SOCKET
168	311444GS	CIRCUIT BREAKER	222	707170	CIRCUIT BREAKER, 15A
169	76040GS	SCREW	223	705931	CIRCUIT BREAKER, 20A
170	207743GS	NUT	224	319463GS	BUTTON-SELECT
171	91719GS	WASHER	225	705490	GROMMET
172	207806GS	WASHER	226	705478	COVER
173	207805GS	WASHER	--	187876GS	CABLE-BTTRY CHARGE (Not Illustrated)
174	187424GS	WING NUT	--	100005	OIL (Not Illustrated)
175	707168	FILTER-FUEL TANK	--	707850	ADAPTER-USB (Not Illustrated)
176	----	CLAMP	--	706357	FUNNEL (Not Illustrated)
178	314533GS	HARNESS-WIRING	--	703574	KIT-TOOL (Not Illustrated)
189	315824GS	WIRE	--	311559GS	JET-MAIN, High Altitude, 5000 ft (Optional Accessory - Not Included)
190	315829GS	HARNESS-WIRING			
203	----	BRACKET			

## Footnotes

The above parts group applies to the following Mfg. Nos.:  
**030651-00 - Inverter Generator**

# Engine

**NOTE:** Unless noted otherwise, use the standard hardware torque specification chart.



REF.	PART NO.	DESCRIPTION	REF.	PART NO.	DESCRIPTION
1	311375GS	BOLT	17	----	NUT
2	315939GS	PANEL-ACCESS (Includes Ref. Nos. 193, 194 & 236)	18	311386GS	BOLT
3	311377GS	COVER-KNOB	19	311387GS	COVER-AIR CLEANER (Includes Ref. No. 195)
4	----	BOLT	20	311388GS	FILTER-A/C FOAM
5	707587	KNOB	21	311389GS	FILTER-A/C FOAM
6	311379GS	SCREW	22	----	NUT
7	311380GS	PLATE-TRIM	23	317437GS	BASE-AIR CLEANER
8	311381GS	BOLT	24	311391GS	GASKET-AIR CLEANER
9	317877GS	COVER-SIDE (Includes Ref. Nos. 196, 228, 229 & 233)	25	311392GS	CARBURATOR
10	706057	PUMP-FUEL	26	311393GS	ROD-THROTTLE
11	----	SCREW	27	----	SPRING
12	311384GS	VALVE-FUEL	28	311394GS	BRACKET
13	311385GS	SWITCH-ON/OFF	29	311395GS	MOTOR-STEPPER
14	----	BOLT	30	----	BOLT
15	----	COVER-SWITCH	31	----	BOLT
16	----	CONNECTION	32	311396GS	COVER

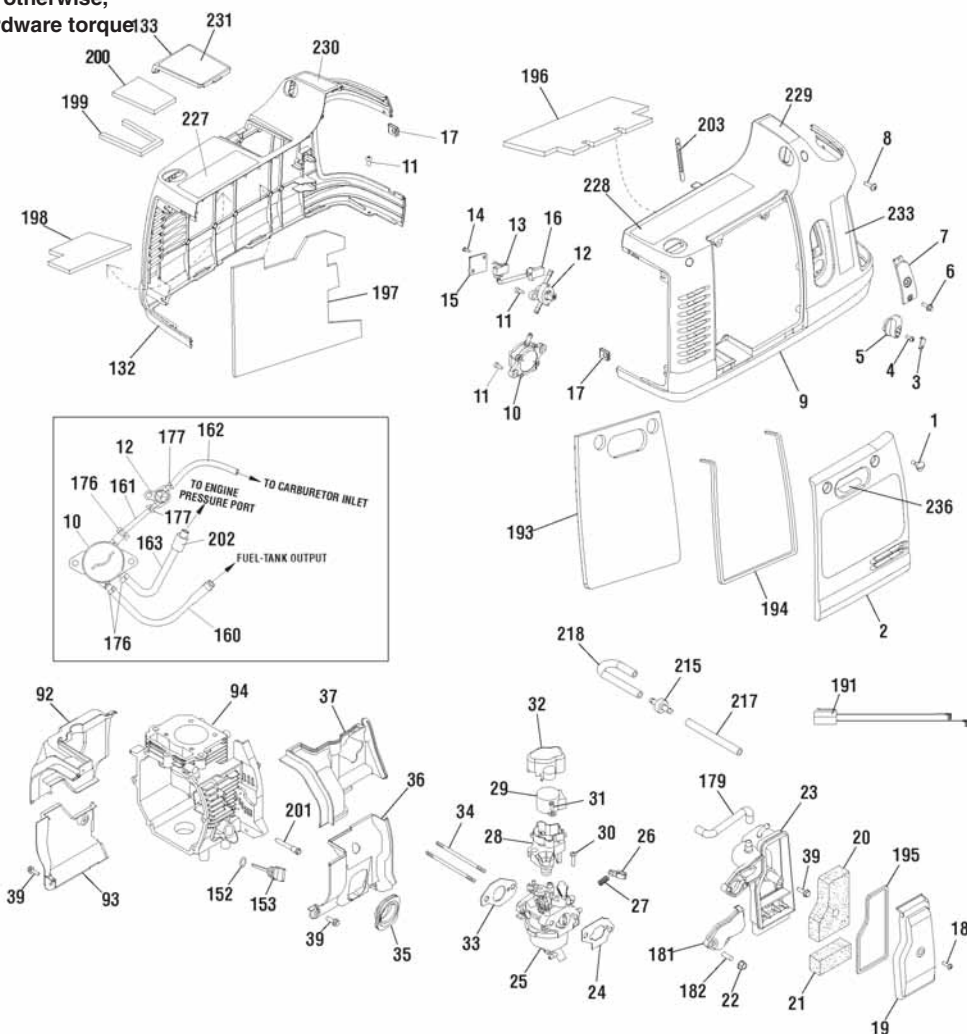
## Footnotes

The above parts group applies to the following Mfg. Nos.:  
**030651-00 - Inverter Generator**

# Engine

80015609pg2

**NOTE:** Unless noted otherwise, use the standard hardware torque specification chart.



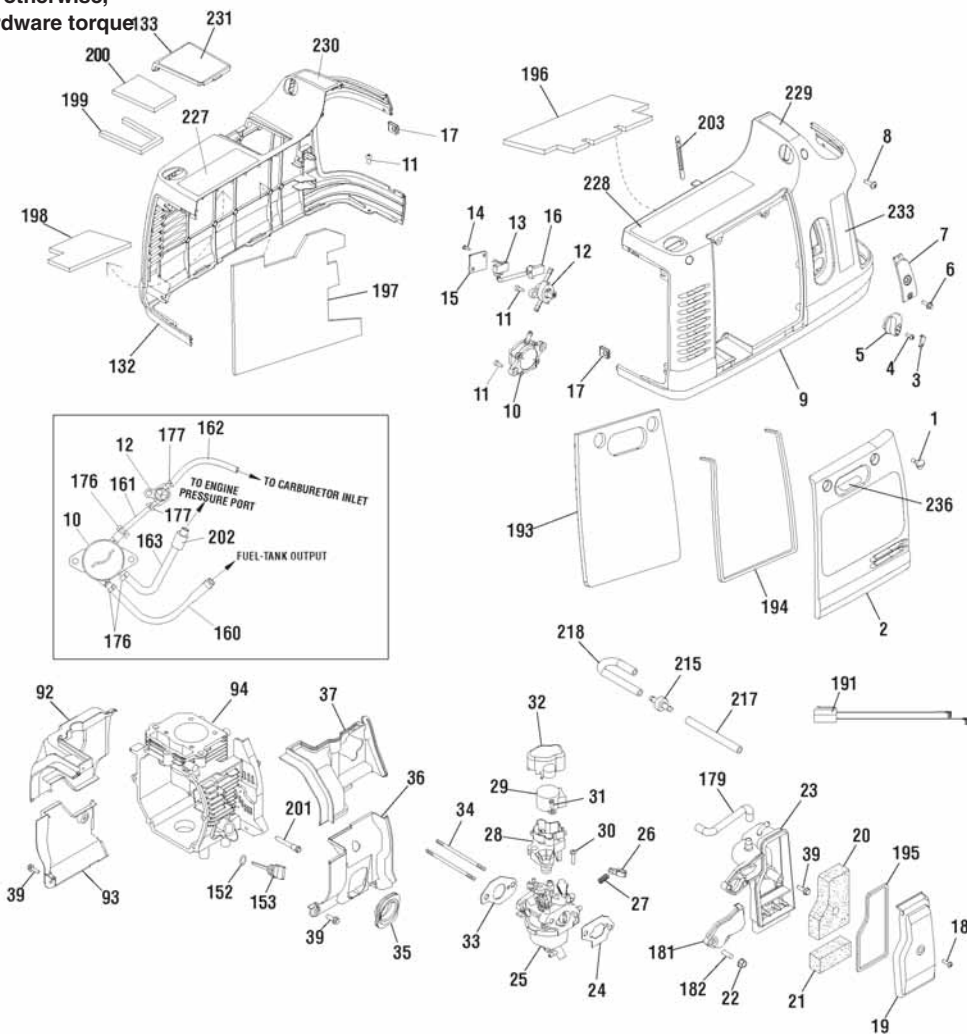
REF.	PART NO.	DESCRIPTION	REF.	PART NO.	DESCRIPTION
33	311397GS	GASKET	163	311440GS	HOSE-VACUUM
34	311398GS	STUD	176	----	CLAMP
35	----	SEAL-RUBBER	177	----	CLAMP
36	----	DEFLECTOR	179	311446GS	HOSE
37	----	DEFLECTOR	181	312861GS	COVER-AIR CLEANER
39	311400GS	SCREW	182	----	SLEEVE
92	----	DEFLECTOR	191	314479GS	WIRE
93	----	DEFLECTOR	193	----	FOAM
94	----	CRANKCASE	194	----	SEAL
132	311429GS	COVER-SIDE (Includes Ref. Nos. 197, 198 & 227)	195	----	SEAL
133	311430GS	COVER-SPARK PLUG (Includes Ref. Nos. 199, 200 & 231)	196	----	FOAM
152	705492	OIL SEAL	197	----	FOAM
153	311434GS	DIPSTICK	198	----	FOAM
160	707167	HOSE-FUEL	199	----	SEAL
161	317444GS	HOSE-FUEL	200	----	FOAM
162	317752GS	HOSE-FUEL	201	----	CYLINDER-BREATHING TUBE
			203	----	BRACKET

## Footnotes

The above parts group applies to the following Mfg. Nos.:  
**030651-00 - Inverter Generator**

# Engine

**NOTE:** Unless noted otherwise, use the standard hardware torque specification chart.



REF.	PART NO.	DESCRIPTION	REF.	PART NO.	DESCRIPTION
215	317108GS	CHECK VALVE			
217	317446GS	HOSE			
218	317447GS	HOSE			
227	707633	DECAL			
228	707634	DECAL			
229	707602	DECAL			
230	707635	DECAL			
231	707604	DECAL			
233	707605	DECAL			
236	705967	DECAL			

## Footnotes

The above parts group applies to the following Mfg. Nos.:  
**030651-00 - Inverter Generator**

Not for  
Reproduction

Not for  
Reproduction

Not for  
Reproduction

# Hardware Identification & Torque Specifications

Torque Specification Chart								
FOR STANDARD METRIC MACHINE HARDWARE (Tolerance ± 20%)								
Property Class	5.6		8.8		10.9		12.9	
	Class 5.6		Class 8.8		Class 10.9		Class 12.9	
Size Of Hardware	in/lbs		in/lbs		in/lbs		in/lbs	
	ft/lbs	Nm.	ft/lbs	Nm.	ft/lbs	Nm.	ft/lbs	Nm.
M3	5.88	.56	13.44	1.28	19.2	1.80	22.92	2.15
M4	13.44	1.28	30.72	2.90	43.44	4.10	52.56	4.95
M5	26.4	2.50	60.96	5.75	5.97	8.10	7.15	9.7
M6	44.64	4.3	7.3	9.9	10.3	14	12.1	16.5
M7	5.2	7.1	12.1	16.5	16.9	23	19.9	27
M8	7.7	10.5	17.7	24	25	34	29	40
M10	15	21	35	48	50	67	59	81
M12	26	36	61	83	86.2	117	103	140
M14	42	58	101	132	136	185	162	220
M16	64	88	147	200	210	285	250	340
M18	89	121	202	275	287	390	346	470
M20	126	171	290	390	405	550	486	660
M22	169	230	390	530	559	745	656	890
M24	217	295	497	375	708	960	840	1140
M27	320	435	733	995	1032	1400	1239	1680
M30	435	590	995	1350	1401	1900	1681	2280
M33	590	800	1349	1830	1902	2580	2278	3090
M36	759	1030	1740	2360	2441	3310	2935	3980
M39	988	1340	2249	3050	3163	4290	3798	5150

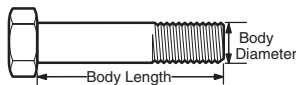
The guides and ruler furnished below are designed to help you select the appropriate hardware.



Nut, M8

Thread Diameter (mm)  
Inside Diameter (in)  
Threads per inch

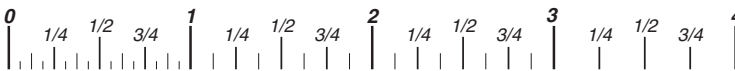
Nut, 1/2-16



Screw, M8- 1.25 x 25

Thread Diameter (mm)  
Body Diameter  
Distance between threads (mm)  
Threads per inch  
Body Length (mm)  
Body Length (in)

Screw, 1/2- 16 x 2



## Standard Hardware Sizing

When a washer or nut is identified as 1/2" (M8), this is the *Nominal size*, meaning the *inside diameter* is 1/2 inch (8mm metric thread diameter); if a second number is present it represents the *threads per inch* (distance between threads).

When bolt or capscrew is identified as 1/2 - 16 x 2" (M8 - 1.25 x 50), this means the *Nominal size*, or body diameter is 1/2 inch (8mm metric thread diameter), the second number, 16, represents the *threads per inch*, (1.25 thread diameter). The final number is the body length of the bolt or screw, 2 inches (50mm).

Torque Specification Chart						
FOR STANDARD MACHINE HARDWARE (Tolerance ± 20%)						
Hardware Grade	No Marks		SAE Grade 5		SAE Grade 8	
	SAE Grade 2		SAE Grade 5		SAE Grade 8	
Size Of Hardware	in/lbs		in/lbs		in/lbs	
	ft/lbs	Nm.	ft/lbs	Nm.	ft/lbs	Nm.
8-32	19	2.1	30	3.4	41	4.6
8-36	20	2.3	31	3.5	43	4.9
10-24	27	3.1	43	4.9	60	6.8
10-32	31	3.5	49	5.5	68	7.7
1/4-20	66	7.6	8	10.9	12	16.3
1/4-28	76	8.6	10	13.6	14	19.0
5/16-18	11	15.0	17	23.1	25	34.0
5/16-24	12	16.3	19	25.8	29	34.0
3/8-16	20	27.2	30	40.8	45	61.2
3/8-24	23	31.3	35	47.6	50	68.0
7/16-14	30	40.8	50	68.0	70	95.2
7/16-20	35	47.6	55	74.8	80	108.8
1/2-13	50	68.0	75	102.0	110	149.6
1/2-20	55	74.8	90	122.4	120	163.2
9/16-12	65	88.4	110	149.6	150	204.0
9/16-18	75	102.0	120	163.2	170	231.2
5/8-11	90	122.4	150	204.0	220	299.2
5/8-18	100	136	180	244.8	240	326.4
3/4-10	160	217.6	260	353.6	386	525.0
3/4-16	180	244.8	300	408.0	420	571.2
7/8-9	140	190.4	400	544.0	600	816.0
7/8-14	155	210.8	440	598.4	660	897.6
1-8	220	299.2	580	788.8	900	1,244.0
1-12	240	326.4	640	870.4	1,000	1,360.0

## NOTES

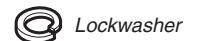
- These torque values are to be used for all hardware excluding: locknuts, self-tapping screws, thread forming screws, sheet metal screws and socket head setscrews.
- Recommended seating torque values for locknuts:
  - for prevailing torque locknuts - use 65% of grade 5 torques.
  - for flange whizlock nuts and screws - use 135% of grade 5 torques.
- Unless otherwise noted on assembly drawings, all torque values must meet this specification.

## Common Hardware Types

Hex Head Capscrew

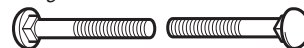


Washer



Lockwasher

Carriage Bolt



Hex Nut

## Wrench & Fastener Size Guide

1/4" Bolt or Nut Wrench—7/16"	5/16" Bolt or Nut Wrench—1/2"	3/8" Bolt or Nut Wrench—9/16"	7/16" Bolt or Nut Wrench (Bolt)—5/8" Wrench (Nut)—11/16"	1/2" Bolt or Nut Wrench—3/4"
M6 Bolt or Nut Wrench—10mm	M8 Bolt or Nut Wrench—13mm	M10 Bolt or Nut Wrench—17mm	M12 Bolt or Nut Wrench—19mm	M14 Bolt or Nut Wrench—22mm



Not for  
Reproduction

**Briggs & Stratton Power Products Group**

Copyright© 2015 Briggs & Stratton Power Products Group. All rights reserved. No part of this page can be reproduced or transmitted in any form by any means without the express written permission of Briggs & Stratton Power Products Group.