

Nema 23 Hybrid Stepper Motor

Rev: B

Date: 140306

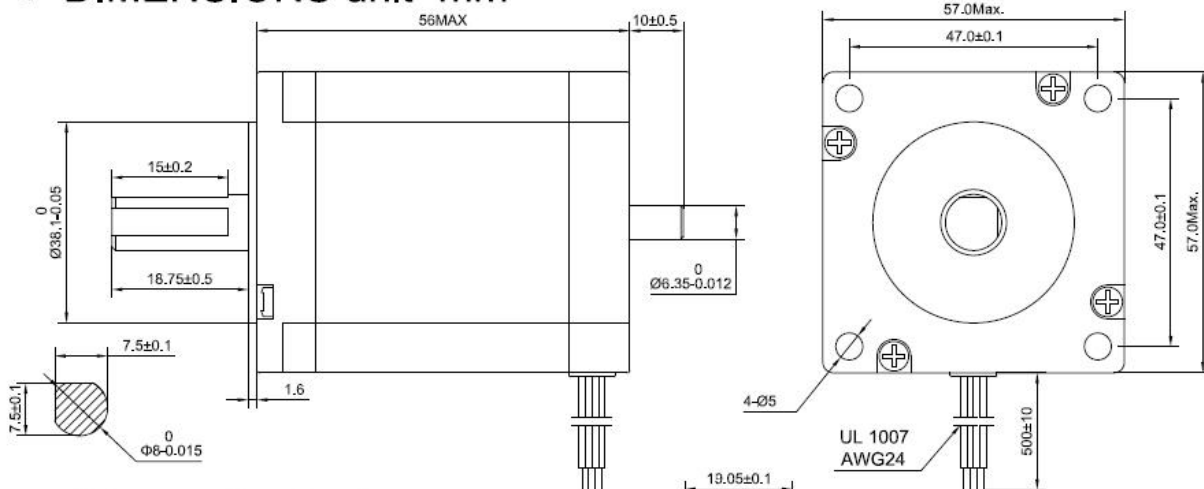
COMMON RATINGS

Step angle :	1.8°	Dielectric strength :	500VAC
Positional accuracy :	±5%	Insulation resistance :	100Mohm(500VDC)
Number of Phase :	2/4	Ambient Temperature :	-10℃~50℃
Temperature rise :	80℃MAX	Insulation class :	B
Rotor Inertia :	300gcm ²	Weight :	0.7Kg

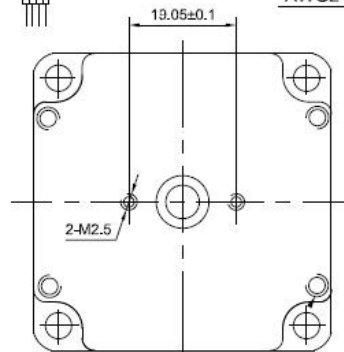
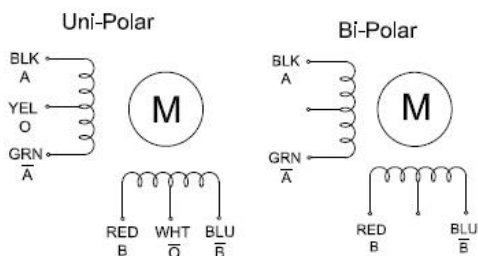
SPECIFICATIONS

Connection	Holding Torque (2 phases on) oz-in/N.m	Rated Current/Phase (Amps DC)	Phase Resistance (ohms) ±10%	Voltage Current/Phase (V DC)	Phase Inductance (mH)±20%(1KHz) Typical
Unipolar	127.5/0.9	1.0	7.4	7.4	10.0
Bipolar (Serial)	181.3/1.28	0.71	14.8	10.5	40.0

DIMENSIONS unit=mm



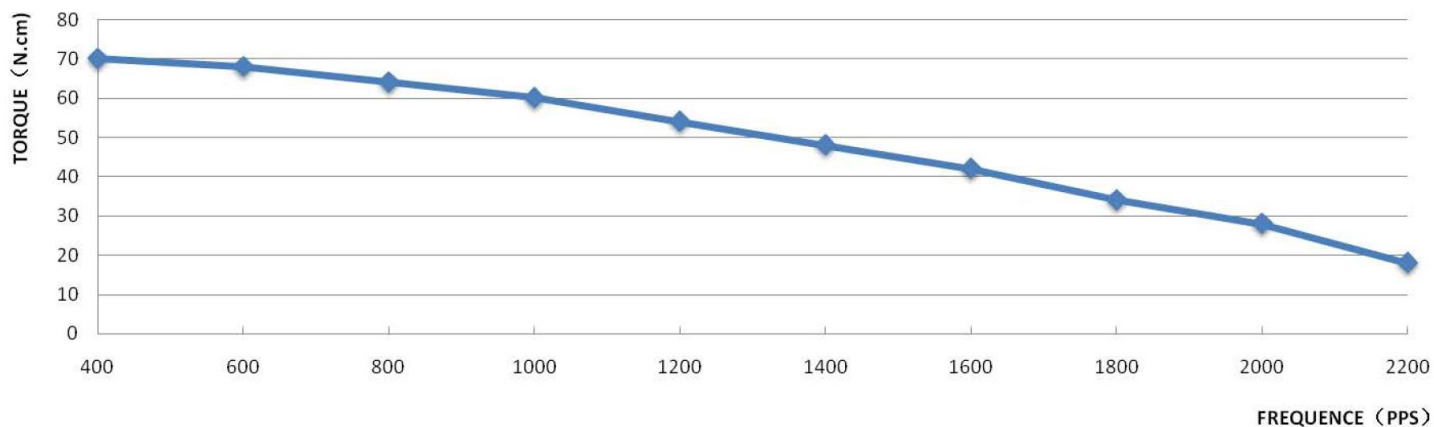
CONNECTIONS



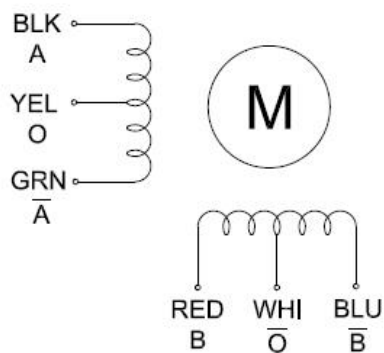
Note:
1. Lead Wires Should Be Stripped & Tinned.
2. All The Parts Are CE & RoHS Certified.

						23HS22-1006D			技术规格书	
标记	处数	分区	更改文件号	签名	日期				OSM TECHNOLOGY	
设计			标准化			阶段	标记	重量		
审核										
工艺			批准			共	张	第		

23HS22-1006D PULL OUT TORQUE 1.0A/PHASE 24V CONSTANT CURRENT HALF STEP



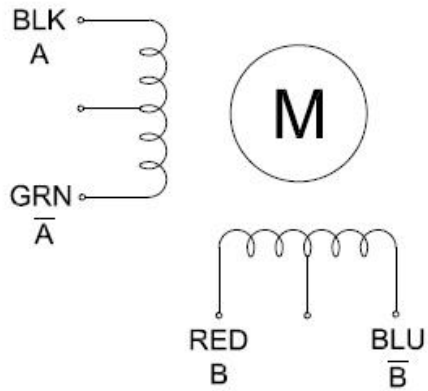
6 Wires Uni-Polar Full Step




CW DIRECTION	STEP	A	\bar{A}	B	\bar{B}	O (\bar{O})
	1	+		+		+
	2		+	+		+
	3		+		+	+
	4	+			+	+
	1	+		+		+

⦿ direction of rotation as viewed from mounting end of motor

6 Wires Bi-Polar Full Step



CW DIRECTION	STEP	A	Ā	B	B̄
	1	+		+	
	2		+	+	
	3		+		+
	4	+			+
	1	+		+	

● direction of rotation as viewed from mounting end of motor