

Wireless Pro Controller User Instruction

Model No.: 8576 Blue-red

Update Instruction:

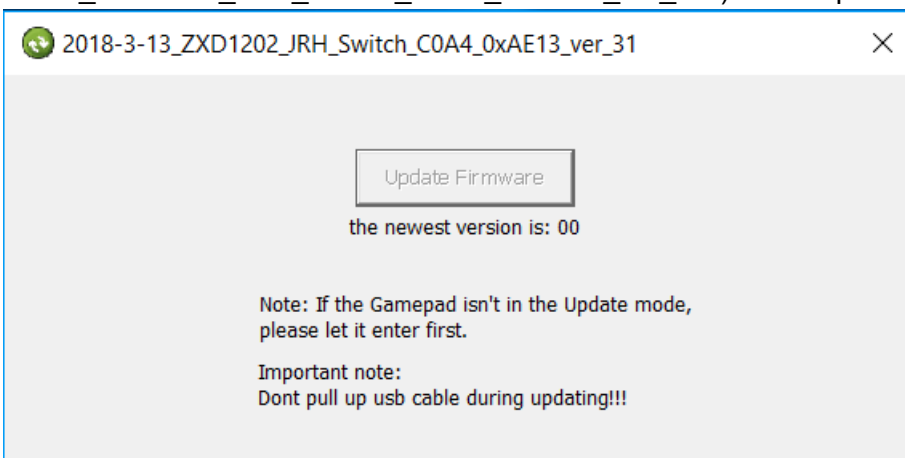
This wireless Pro controller is compatible with the latest version of Switch console when it's out from factory, in case Switch console will be upgraded again in future and the controller is unable to be connected to Switch console, or the controller needs to be updated for better performance, then this controller can be updated by update software via connecting it to a PC. You can get the latest version update software from us and follow the instruction below to update the controller.

Please help us check the fragile sticker on your controller, if it's written with JRH-A/ B/C, it means you need to update your controller. If it says JRH-D/E/F... Z, or doesn't have a sticker, it means you do not need to update it. Be aware that do not update if your controllers don't need an update, because it might cause some other issues if you do so.

If you need to update, please download the update file on a computer (**Windows system, not Mac**) from this link: <http://download.nsioutlet.com/E01540R.rar>

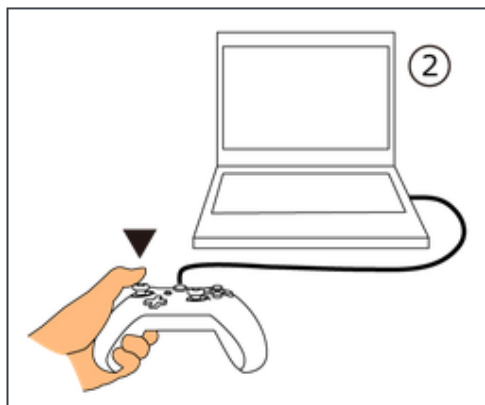
If you don't, please move to the part "**Pairing Instruction**" directly on the next page.

1. Unpack the file you just downloaded, run exe file. (named "8576_ZXD1202_JRH_Switch_C0A4_0xAE13_ver_31"). The "Update Firmware" button is inactive.

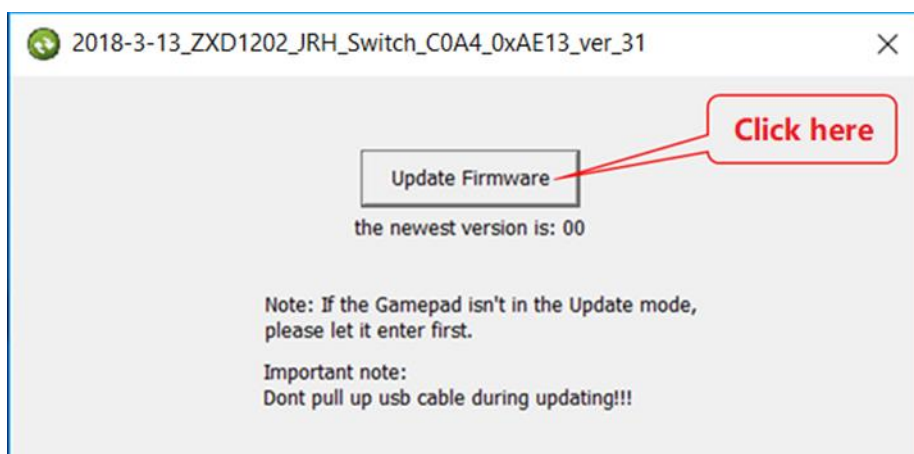


2. Connect the included USB cable to your controller.

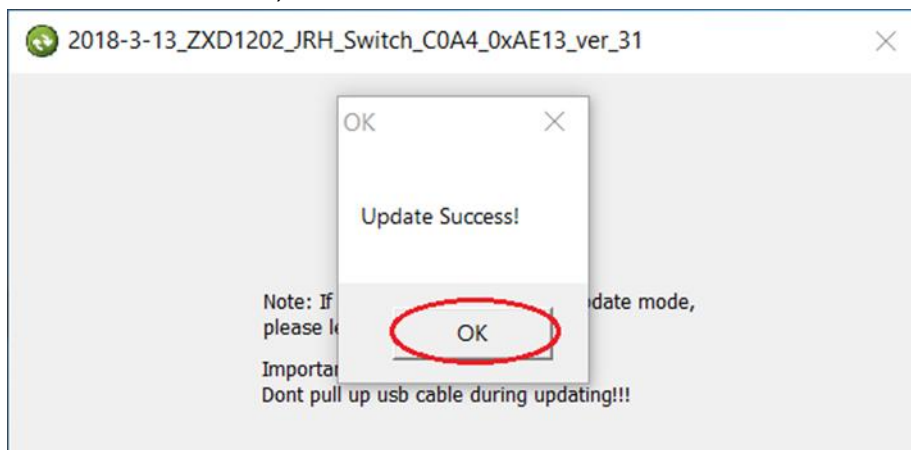
3. **While holding the left stick button**, connect the controller to your computer using the USB cable. If you have done this correctly, your controller will be recognized by the computer, and the "Update Firmware" button is active now. If the update button is not showing, you have not connected it to your computer while holding the LS Button.



4. Click the "Update Firmware" button, wait a few seconds.



5. It's done in no time. On the controller four LEDs start blinking simultaneously for three or four times then two of the four LEDs keep blinking, it means the updating is completed and successful. Remove the USB cable, the LEDs blink circularly for a while then turn off automatically (or press the "RESET" key once to turn off the controller).



Pairing Instruction:

(You only need to do pairing for the first time or after a firmware update.)

6. Turn on the Switch Console, select "Controllers" -- "Change Grip/order".

7. Hold on "**HOME + Y**" Buttons for 5s, the four LEDs above the "HOME" button start blinking quickly and

circularly in pairing mode, when one of the LEDs is solid bright, it means the controller is paired with the console successfully, then press on the button "A" to operate.

8. After first pairing, you only need press the "HOME" button for 5s to power on the controller, it will be connected to the console automatically, then press on the button "A" to operate.

9. If the controller is in sleeping mode, press the "HOME" button to wake it up, it will be connected to the console again automatically, then press on the button "A" to operate.

Note: If the controller connection failed, it may be caused by your switch have recorded too many controllers before. In this situation, you should go to "System Setting--Controllers and Sensors--Disconnect Controllers" to purge data, and then re-connect by following the steps above.

How to correct the axis:

After the four LEDs off, and the controller is disconnected. Place the controller on the flat surface on a table, long press on the three keys simultaneously at the sequence start from "-" key and "B" key and then "HOME" key, the four LEDs start blinking at a way of both left LEDs and both right LEDs flashing alternately, release the three keys, next press on "+" key once on the controller, the four LEDs turn to be blinking circularly for a while then off, it means the axis is corrected successfully.

