

(/content/www/us/en/homepage.html)
USA (English)



User Guide for Intel® Compute Stick STCK1A32WFC

Last Reviewed: 09-Jan-2017

Article ID: 000005885

Click the arrows or topics for details:

Product Description

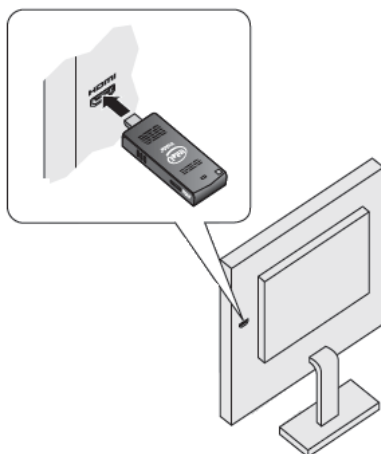
Collapse all

Symbol	Description	
Security	Security cable opening	
	USB 2.0 port	
	Power connector	
	Power button	
HDMI*	HDMI connector	
Micro SD*	Micro SD memory card slot	
Power LED	Power LED—blue	

Connect Directly to a Display

Plug the Intel® Compute Stick directly into a standard HDMI port on a television or monitor.

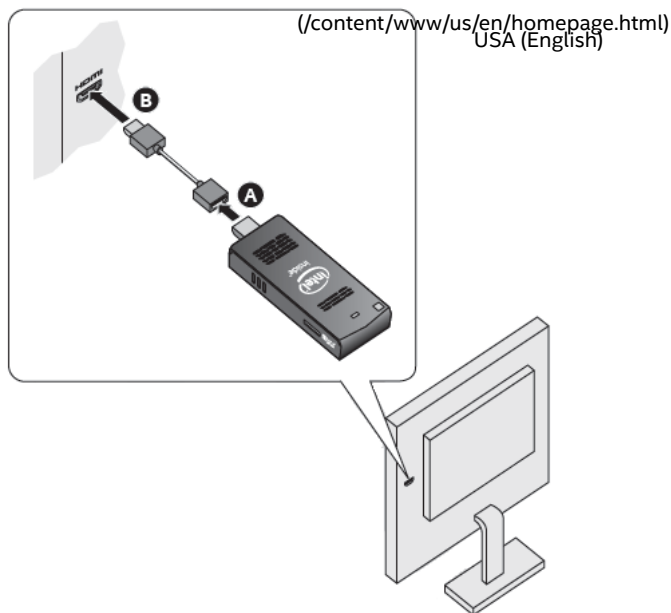
The Intel® Compute Stick extends about 4 inches (102 mm) out from the HDMI port.



Connect to a Display with the HDMI Extender Cable

If space is limited around the HDMI port, use the flexible HDMI extender cable that came in the box.

1. Plug the Intel® Compute Stick into the female end of the extender cable (A).
2. Plug the male end of the extender cable into the HDMI port on the television or monitor (B).

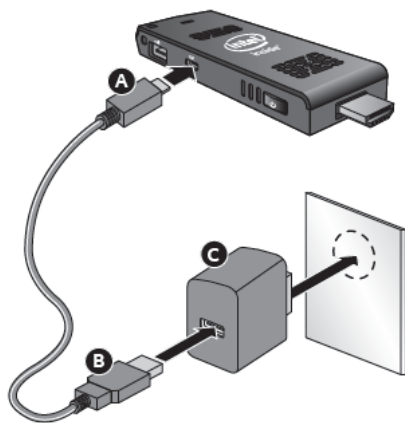


For a list of tested televisions and monitors, go to the Tested Peripherals (/content/www/us/en/support/boards-and-kits/intel-compute-stick/000006029.html) page on the support site.

Powering the Device

Using the AC Adapter

Connect the power adapter to the Intel® Compute Stick as shown.



Note	The Intel Compute Stick starts automatically when power is applied.
-------------	---

Shut down the Intel Compute Stick using the normal shutdown process for Windows* 8.1.

Subsequent power-ups are done by pressing the power button on the side of the Intel Compute Stick.



Using USB Port

If a television or monitor has an HDMI port and a USB port, you can use the USB port to power the Intel Compute Stick. <http://content/www.us/en/homepage.html> (English)

The Intel Compute Stick is designed to use up to 10 W of power. If the television's USB port can supply enough power, you can use it to power the Intel Compute Stick. A USB 2.0 port normally supplies 2.5 W of power.

To use the USB port:

1. Plug the micro USB end of the 3-foot USB cable into the Intel Compute Stick.
2. Plug the standard USB end of the cable into the USB port on the TV or monitor, **instead of using the AC power plug.**



Caution Do not power the Intel Compute Stick with the AC power adapter and a USB port at the same time.

If the USB port does not supply enough power, these are the likely symptoms:

- It will not turn on.
- It turns on, but does not complete the boot process.
- It turns on, but the operating system does not load.
- It turns on and the operating system loads, but it performs very slowly, reboots, or locks up.

Connect a Keyboard and Mouse

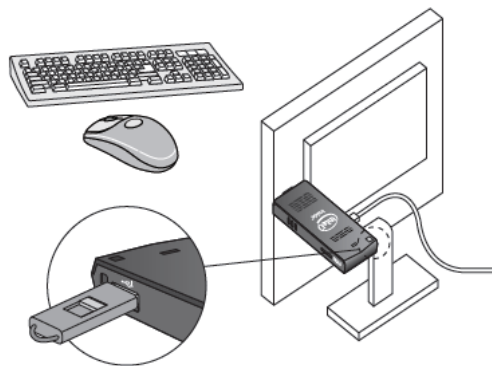
The Intel® Compute Stick supports the following:

- USB wireless keyboard and mouse, using a USB dongle.
- USB wired keyboard and mouse, using a USB hub.
- Bluetooth* keyboard and mouse.
 - Follow the instructions that came with the keyboard and mouse to pair them with the Intel Compute Stick.

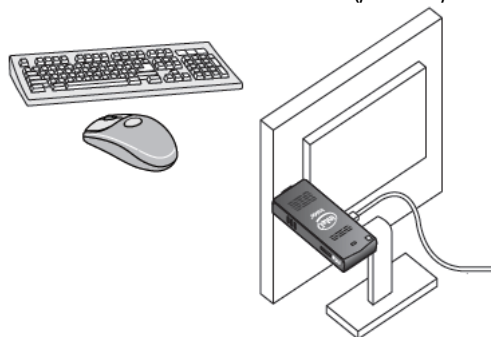
Note

- You might need to temporarily connect a wired mouse and keyboard to the Intel Compute Stick to pair Bluetooth devices.
- Bluetooth devices that pair directly to the onboard Bluetooth do not work during POST or in BIOS.

Wireless keyboard and mouse connection example:



Bluetooth keyboard and mouse connection example:
[/content/www/us/en/homepage.html](http://content/www/us/en/homepage.html)
 USA (English)



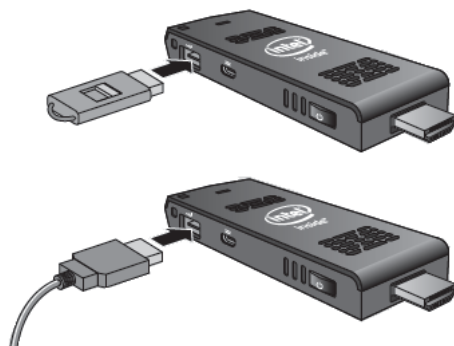
Note Keyboard and mouse are not included.

For a list of tested keyboards and mice, go to the Tested Peripherals
[/content/www/us/en/support/boards-and-kits/intel-compute-stick/000006029.html](http://content/www/us/en/support/boards-and-kits/intel-compute-stick/000006029.html)
 page on the support site.

Use the USB 2.0 Port

Use the USB 2.0 port to:

- Install software from a CD or DVD in a USB optical drive.
- Back up or access media files (such as music and photos) on an external USB flash drive.

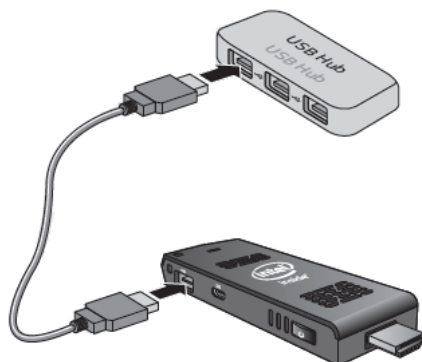


Note USB flash drive and USB cable are not included.

For a list of tested USB devices, go to the Tested Peripherals
[/content/www/us/en/support/boards-and-kits/intel-compute-stick/000006029.html](http://content/www/us/en/support/boards-and-kits/intel-compute-stick/000006029.html)
 page on the Support site.

Connect a USB Hub to the USB 2.0 Port

Connecting a USB hub to the Intel® Compute Stick provides more USB ports.



Note	USB Hub and USB cable are not included. (/content/www/us/en/homepage.html) USA (English)
-------------	--

For a list of tested USB hubs, go to the Tested Peripherals (</content/www/us/en/support/boards-and-kits/intel-compute-stick/000006029.html>) page on the Support site.

Use the MicroSD Card port

The Intel® Compute Stick supports MicroSD card sizes from 8 GB to 128 GB.



Note	MicroSD card is not included.
-------------	-------------------------------

For a list of tested MicroSD cards, go to the Tested Peripherals (</content/www/us/en/support/boards-and-kits/intel-compute-stick/000006029.html>) page on the Support site.

Secure the Intel® Compute Stick

Install a security cable loop in the security opening on the edge of the Intel® Compute Stick. The security opening is 3 mm x 3 mm.



Note	Security cable loop is not included. You can build one using a length of quality wire rope that is less than 3 mm. Insert the rope through the security opening and then crimp the ends together with a cable sleeve.
-------------	---



Start the Device the First Time

The first time you start the device, Windows* 8.1 guides you through the following steps:

1. Select your region and language.
2. Accept the Windows license terms.
3. Personalize Windows and assign a PC Name.
4. "Get Online" dialog to pick a wireless network (this step is optional).
5. Choose **Express Settings** or **Customize**.
6. Assign a user name and password.
7. Finished.

Connect to a Wireless Network [\(/content/www/us/en/homepage.html\)](/content/www/us/en/homepage.html) USA (English)

To connect to a wireless network:

1. Click the **wireless network icon** in the notification area of the taskbar.
2. Click your **network**, and then click **Connect**.
3. Type the security key or passphrase.

Operating System Recovery

There is a Windows* recovery partition on the Intel® Compute Stick. You can use this partition to refresh, reset, or restore Windows. Here is what each of these actions do:


Refresh If your PC isn't performing as well as it once did, and you don't know why, you can refresh your PC. This action does not delete any of your personal files or change your settings. Refresh does the following:

- Files and personalization settings won't change.
- PC settings are changed back to their defaults.
- Apps from the Windows Store are kept.
- Apps installed from disks or websites are removed.
- List of removed apps is saved on the desktop.

Reset If you want to recycle your PC, give it away, or start over with it, you can reset it completely. This process removes everything. Reset does the following:

- All personal files and apps are removed.
- PC settings are changed back to their defaults.
- Windows is reinstalled.

Restore If a recently installed app or driver is causing problems with your PC, you can restore Windows back to an earlier point in time, called a restore point. System Restore doesn't change your personal files, but it can remove recently installed apps and drivers.

 <p>Caution</p>	<p>Before completing a reset or refresh:</p> <ul style="list-style-type: none"> • Make sure to back up all personal data to external storage. • Remove SD card from the card slot, if one is inserted.
---	--

Options to access the recovery media:

- If Windows boots from Windows Start, type **Recovery** and select **Recovery Options**. See How to refresh, reset, or restore your PC (<http://windows.microsoft.com/en-us/windows-8/restore-refresh-reset-pc>) for complete details on how to use the recovery options.
- If Windows fails to boot, the recovery process should automatically start.
- If Recovery does not automatically start, you can try to initiate it by pressing **F8** during boot, when you see the prompt "F8 to Activate Windows 8.1 Recovery Mode."

Follow the recovery steps.

<p>Note</p>	<ul style="list-style-type: none"> • The recovery can take 1½ hours or longer to complete. • The computer might display to halt during the recovery. • Don't shut down the computer during the recovery process.
--------------------	---

Keep BIOS and Drivers Current

BIOS

The latest BIOS updates are available on Download Center ([https://downloadcenter.intel.com/search?keyword=Intel%20%ae Compute Stick STCK1A32WFC](https://downloadcenter.intel.com/search?keyword=Intel%20%ae+Compute+Stick+STCK1A32WFC)). See BIOS Update Instructions (</content/www/us/en/support/boards-and-kits/intel-compute-stick/000005961.html>) for information on updating the BIOS for your Intel® Compute Stick.

Drivers

Graphics, wireless, and Bluetooth* drivers are available on Download Center ([https://downloadcenter.intel.com/search?keyword=Intel%20%ae Compute Stick STCK1A32WFC](https://downloadcenter.intel.com/search?keyword=Intel%20%ae+Compute+Stick+STCK1A32WFC)). HDMI audio drivers are included in the graphics driver package.

Windows* Updates might install driver updates automatically.
(/content/www/us/en/homepage.html)
USA (English)

This article applies to:

Intel® Compute Stick STCK1A32WFC (/content/www/us/en/support/boards-and-kits/intel-compute-stick/intel-compute-stick-stc

Need more help?

Contact support (/content/www/us/en/support/contact-support.html)

Give Feedback

Company Information (/content/www/us/en/company-overview/company-overview.html)

Our Commitment (/content/www/us/en/corporate-responsibility/corporate-responsibility.html)

Communities (/content/www/us/en/blogs-communities-social.html)

Investor Relations (http://www.intc.com/)

Contact Us (/content/www/us/en/company-overview/contact-us.html)

Newsroom (http://newsroom.intel.com/)

Jobs (/content/www/us/en/jobs/jobs-at-intel.html)

(https://www.youtube.com/user/channelintel?
(https://www.instagram.com/intel)

© Intel Corporation

Terms of Use (/content/www/us/en/legal/terms-of-use.html)

*Trademarks (/content/www/us/en/legal/trademarks.html)

Privacy (/content/www/us/en/privacy/intel-privacy-notice.html)

Cookies (/content/www/us/en/privacy/intel-cookie-notice.html)

Supply Chain Transparency
(/content/www/us/en/policy/policy-human-trafficking-and-slavery.html)

Site Map (/content/www/us/en/siteindex.html)