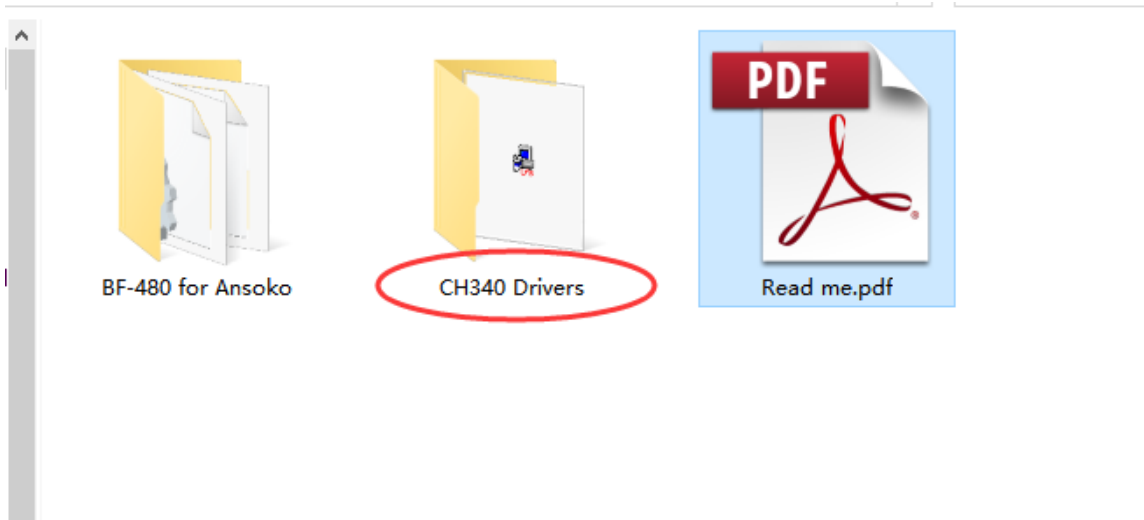


# Steps to program your radios

System: Windows 10

Tools download link: <http://bit.ly/toolsfolder>

**1.** This is the guide for programming **Ansoko A-8S** walkie talkies using Windows 10. The programming cable we recommend uses CH340 chip which is fully compatible with Windows 10 and no driver is needed. For older Windows system versions like Windows 7/8/8.1, please install the drivers for CH340 chip manually (Included in the folder).



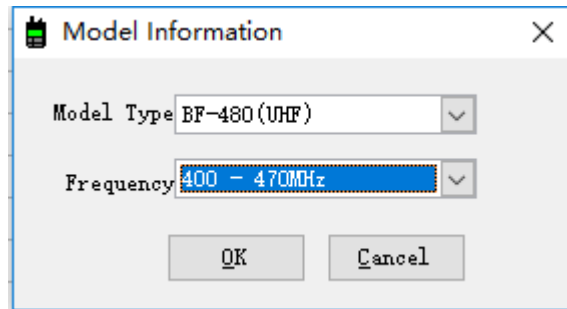
**2.** Once the programming cable is ready, turn on your radio to any channel, connect the radio to your PC or laptop with a serial cable (PC03 FTDI radio programming cable, either PL2303 or CH340 chip works).



# Steps to program your radios

System: Windows 10

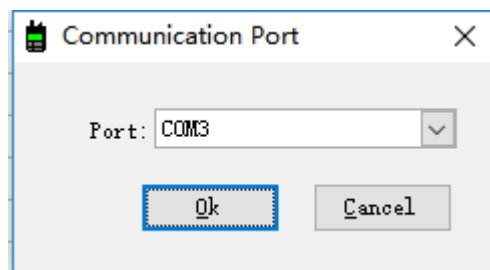
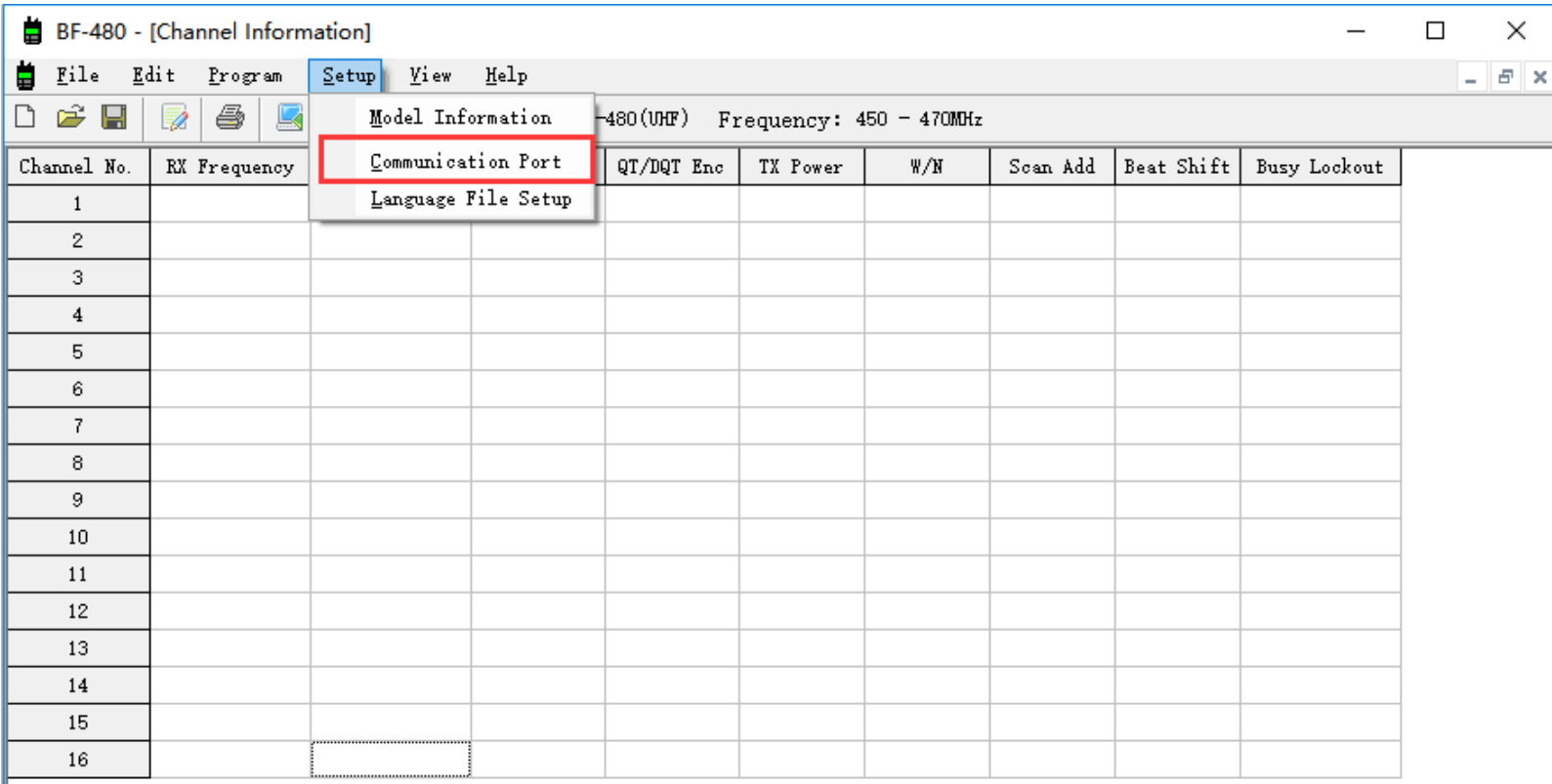
4. Select "BF-480(UHF)" from the Model Type drop-down menu and select the "400-470MHz" Frequency.



# Steps to program your radios

System: Windows 10

5. Once programming cable is plugged into USB port, follow the steps below to select the communication port from the drop-down menu:





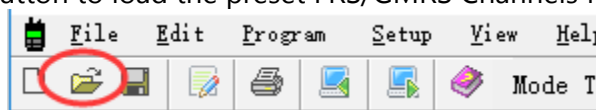
# Steps to program your radios

System: Windows 10

7. When transferring data, you can see the LED indicator on the radio flashes, once data loading complete, you will see a spreadsheet listing 16 channels' data:

8. Click into any of the cells to edit the data. Please ensure frequency consistence while writing data to different radios in order to make them work together.

You may also click "Open" Button to load the preset FRS/GMRS Channels from "Channel Data" folder.



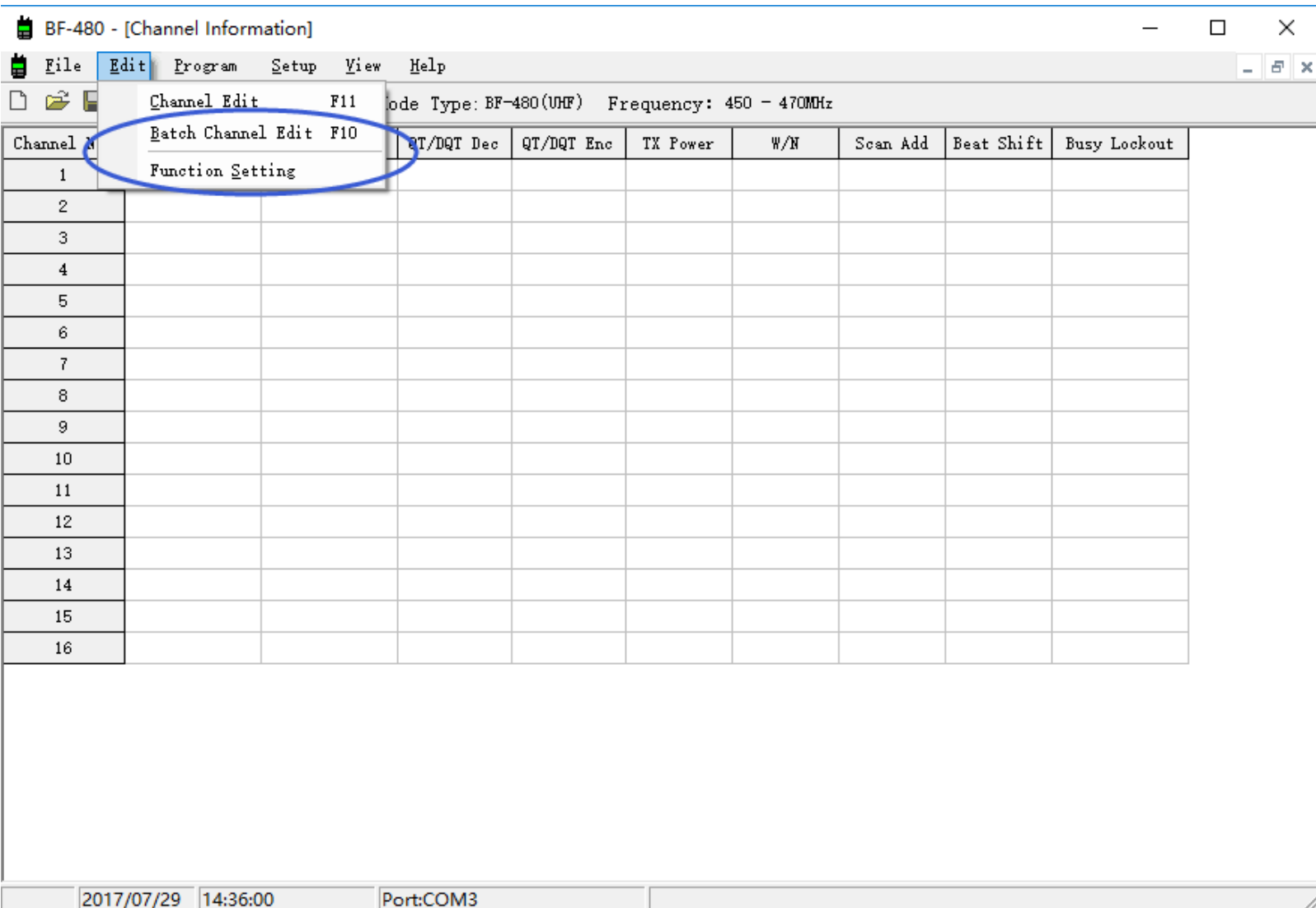
- To enable **QT/DQT(CTCSS/DCS)** function, select built-in codes from the drop-down menu. Only with the same decoding and encoding will two channels be able to contact.

Channel No.	RX Frequency	TX Frequency	QT/DQT Dec	QT/DQT Enc	TX Power	W/N	Scan Add	Beat Shift	Busy Lockout
1	446.00625	446.00625	69.3	69.3	Low	Narrow	No	Yes	No
2	446.01875	446.01875	82.5	82.5	Low	Narrow	No	Yes	No
3	446.03125	446.03125	D023N	D023N	Low	Narrow	No	Yes	No
4	446.04375	446.04375	D115N	D115N	Low	Narrow	No	Yes	No
5	446.05625	446.05625	D743I	D743I	Low	Narrow	No	Yes	No
6	446.06875	446.06875	D023N	D023N	Low	Narrow	No	Yes	No
7	446.08125	446.08125	69.3	69.3	Low	Narrow	No	Yes	No
8	446.09375	446.09375	85.4	85.4	Low	Narrow	No	Yes	No
9	446.10625	446.10625	D026N	D026N	Low	Narrow	No	Yes	No
10	446.11875	446.11875	103.5	103.5	Low	Narrow	No	Yes	No
11	446.13125	446.13125	D245N	D245N	Low	Narrow	No	Yes	No
12	446.14375	446.14375	69.3	69.3	Low	Narrow	No	Yes	No
13	446.15625	446.15625	123.0	123.0	Low	Narrow	No	Yes	No
14	446.16875	446.16875	None	None	Low	Narrow	No	Yes	No
15	446.18125	446.18125	None	None	Low	Narrow	No	Yes	No
16	446.19375	446.19375	69.3	69.3	Low	Narrow	No	Yes	No

# Steps to program your radios

System: Windows 10

9. More options to enable advanced features or batch edit your channel frequencies:



The screenshot shows the BF-480 software interface. The title bar reads "BF-480 - [Channel Information]". The menu bar includes "File", "Edit", "Program", "Setup", "View", and "Help". The "Edit" menu is open, showing three options: "Channel Edit F11", "Batch Channel Edit F10", and "Function Setting". The main window displays a table with 16 channels. The table has columns for "Channel N", "QT/DQT Dec", "QT/DQT Enc", "TX Power", "W/N", "Scan Add", "Beat Shift", and "Busy Lockout". The status bar at the bottom shows the date "2017/07/29", time "14:36:00", and port "Port:COM3".

Channel N	QT/DQT Dec	QT/DQT Enc	TX Power	W/N	Scan Add	Beat Shift	Busy Lockout
1							
2							
3							
4							
5							
6							
7							
8							
9							
10							
11							
12							
13							
14							
15							
16							

# Steps to program your radios

System: Windows 10

**10. Batch setting interface.** Input your starting Rx(receive) and Tx(Transmit) frequency and frequency space between each channel, advanced feature options(eg. CTCSS/DCS) can be set together, once finish, press OK button to edit 16 channels at one time.

**Batch Channel Edit**

Incept RX Frequency(MHz) 0.00000 Frequency Step(KHz) 25.0

Incept TX Frequency(MHz) 0.00000

QT/DQT Decode None QT/DQT Encode None

Wide/Narrow Wide TX Power High

Scan Add  Beat Shift

Busy Lockout

All Channel

Channel From 1 To 1

ASC

DESC

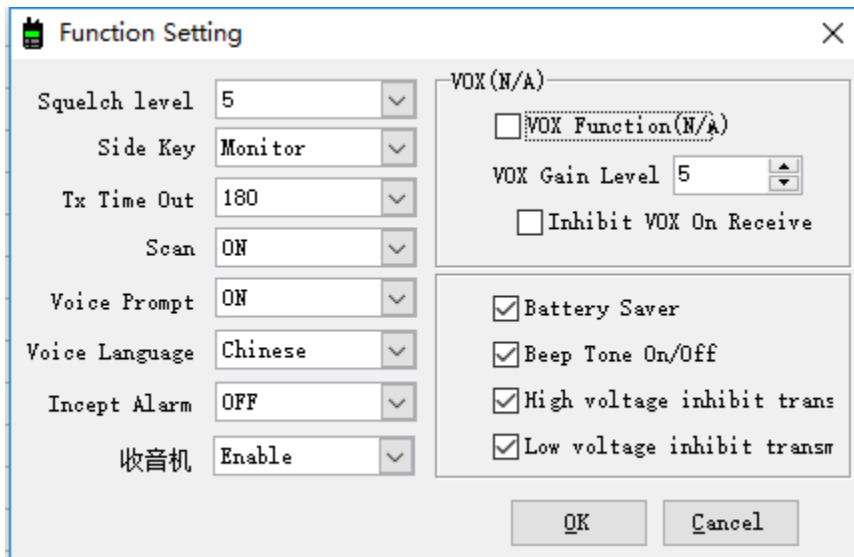
OK Cancel



# Steps to program your radios

System: Windows 10

**11. Advanced feature setting interface:** (Note: VOX function is not supported on this model.)



# Steps to program your radios

System: Windows 10

**Finally**, when all settings are done, don't forget to write your data into your radios.

The screenshot shows the BF-480 software interface. The main window displays a table of radio channels with the following data:

Channel No.	RX Frequency	TX Frequency	QT/DQT Dec	QT/DQT Enc	TX Power	W/N	Scan Add	Beat Shift	Busy Lockout
1	446.00625	446.00625	69.3	69.3	Low	Narrow	No	Yes	No
2	446.01875	446.01875	82.5	82.5	Low	Narrow	No	Yes	No
3	446.03125	446.03125	D023N	D023N	Low	Narrow	No	Yes	No
4	446.04375	446.04375	D115N	D115N	Low	Narrow	No	Yes	No
5	446.05625	446.05625	D743I	D743I	Low	Narrow	No	Yes	No
6	446.06875	446.06875	D023N	D023N	Low	Narrow	No	Yes	No
7	446.08125	446.08125	69.3	69.3	Low	Narrow	No	Yes	No
8	446.09375	446.09375						Yes	No
9	446.10625	446.10625						Yes	No
10	446.11875	446.11875						Yes	No
11	446.13125	446.13125						Yes	No
12	446.14375	446.14375						Yes	No
13	446.15625	446.15625	123.0	123.0	Low	Narrow	No	Yes	No
14	446.16875	446.16875	None	None	Low	Narrow	No	Yes	No
15	446.18125	446.18125	None	None	Low	Narrow	No	Yes	No
16	446.19375	446.19375	69.3	69.3	Low	Narrow	No	Yes	No

A dialog box titled "Write data to radio" is overlaid on the table. It contains a progress bar showing "0 %", an "Ok" button (circled in blue), and a "Cancel" button. The "Setup" menu item in the software's menu bar is also circled in blue.

At the bottom of the software window, the status bar shows: 2017/07/29 12:18:54 Port:COM3

**Thank you for reading 😊**