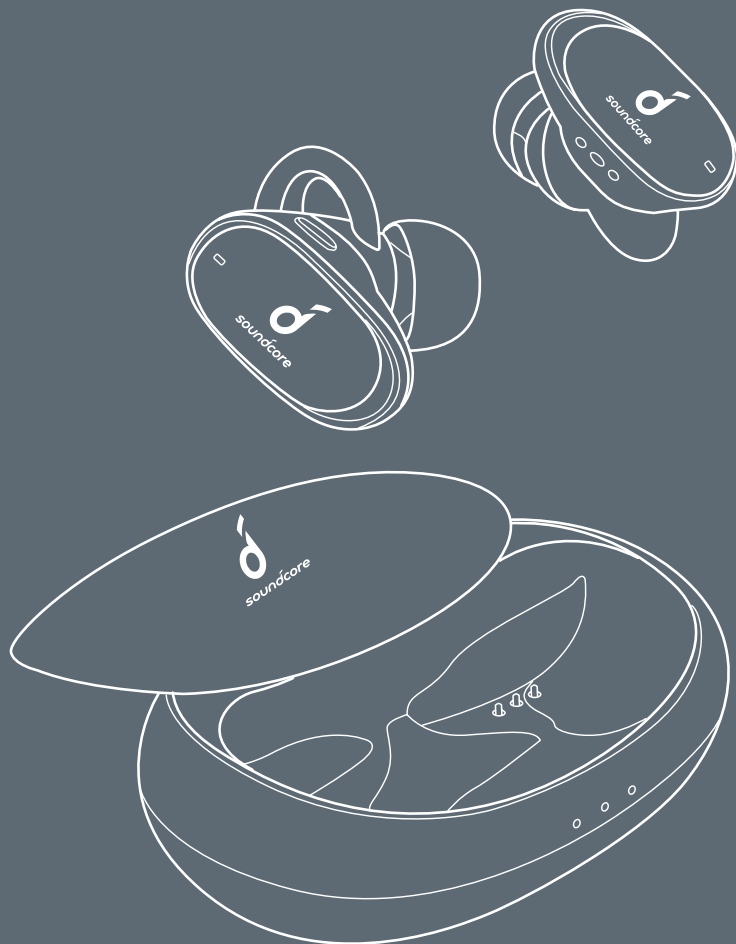


soundcore



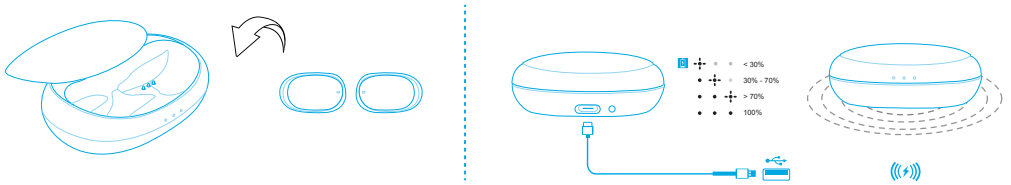
Soundcore Liberty 2 Pro

USER MANUAL

Charging



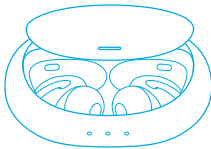
- Slide to open or close the charging case to activate the LED battery indicator.
- Fully charge both the earbuds and the charging case before the first-time using.
- To preserve battery lifespan, fully charge at least once every 45 days.
- To prevent damage, use the provided USB-C cable.
- You can charge the charging case by using a certified wireless charger (not provided).
- Fully dry off the earbuds and the USB port before charging.



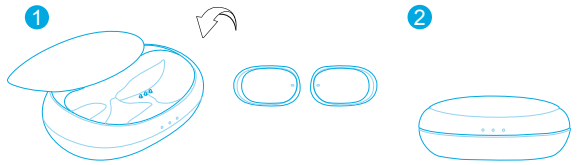
Powering On/Off

Slide to open the charging case, the earbuds will automatically power on. Place the earbuds back into the charging case and close the case, the earbuds will automatically power off.

ON



OFF



- To manually power on, press and hold the multi-function button on either one of earbuds for 1 second.
- To manually power off, press and hold the multi-function button on either one of earbuds for 5 seconds.

LED behaviour (Earbuds)

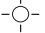

ON	○	Steady white for 1 second
OFF	●	Steady red for 1 second

Pairing

True Wireless Stereo Connection

Slide to open the charging case, the earbuds will automatically power on. The right earbud will automatically connect with the left earbud.

LED behaviour (Earbuds)

	Breathing white	TWS connecting
	Steady white for 1 second	TWS connected

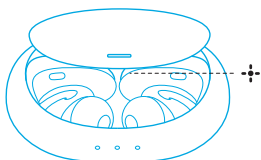


- When powered off, press and hold the multi-function button on both earbuds for 1 second, the earbuds will enter TWS connecting mode.
- When powered on and connected, place either one of the earbuds into the charging case and close the case, you can keep using the other one.
- When powered on and connected, if either one of the earbuds is out of battery and powered off, you can keep using the other one.
- When you are on a call, press and hold the multi-function button on either one of the earbuds for 1 second, then this earbud will switch to be the primary earbud.
- When you are on a call, place either one of the earbuds into the charging case, the microphone in the other earbud will be activated.

Bluetooth Pairing with your Device

The earbuds will enter pairing mode when powered on. You are requested to confirm the connection when you see a pop-out screen.

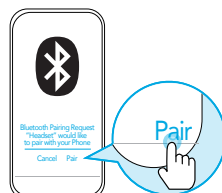
1



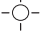

2



3



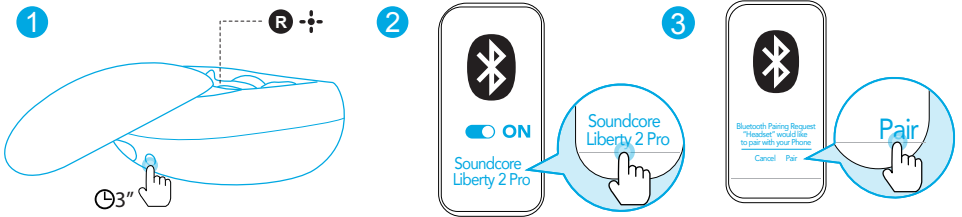
LED behaviour (Earbuds)

	Flashing white	Bluetooth pairing
	Steady white for 1 second	Bluetooth connected



- In the pairing process, some devices are incompatible with Qualcomm True Wireless Primary-Secondary dual pairing names, it may notice "connection unsuccessful" when you tap "Pair" or even no screen popped out. Don't worry and it will not influence the using.
- Once successfully paired, the primary earbud connects with your device and transfers signal to the secondary earbud, the latter one will not connect with your device. As a result, in the Bluetooth pairing list on your device, it may indicate that only one side is connected while the other side is not.

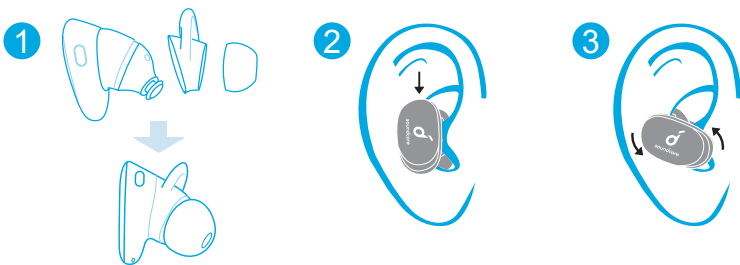
To pair with another Bluetooth device, place the earbuds back into the charging case and make sure they are being charged, keep the case cover open, then press and hold the button on the charging case for 3 seconds. The LED indicator on the right earbud will flash rapidly.




- Each time you power on your Soundcore earphones, it will automatically connect to your last successfully connected device if available within the Bluetooth range.
- Mono mode: When Bluetooth connected, you can use either one of the earbuds only by putting the other one back into the charging case and closing the cover.

4 Wearing

1. Choose the ear tips and ear wings that fit your ears the best.
2. Insert the earbuds into the inner canal of your ears.
3. Turn and find the most comfortable position.



Controls

 All of the controls in stereo mode can be customized in the Soundcore App.



Play / Pause



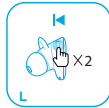
Press (R/L)

Next track



Press twice (R)

Previous track



Press twice (L)

Volume up / down

- The volume up / down controls can be customized in Soundcore App
- Control volume via the connected device



Answer / End a call



Press (R/L)

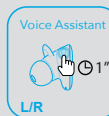
Reject a call



Press and hold for 1 second (R/L)



Activate Siri / Other voice assistant software



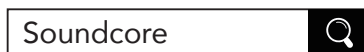
Press and hold for 1 second (R/L)

Soundcore App

☰ Make sure the earbuds firmware is always the most updated before using.

Download the Soundcore App for HearID, UI customization, EQ settings and earbuds firmware update.

- **HearID:** HearID maps your personal hearing sensitivity at multiple frequencies and analyzes the results. It tailors the EQ settings and creates a personalized sound profile for you.
- **UI customization:** In stereo mode, all of the controls can be customized in the App. In mono mode, the controls are fixed.
- **EQ settings:** There're more than 20 EQ settings you can choose in the App to optimize your experience while enjoying different music genres.
- **Earbuds firmware update:** The earbuds firmware can be updated in the App. You will be informed once the new version of firmware is detected when you connect the earbuds with the App.



Google Play and the Google Play logo are trademarks of Google Inc.



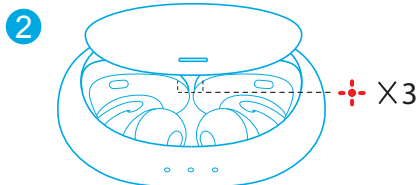
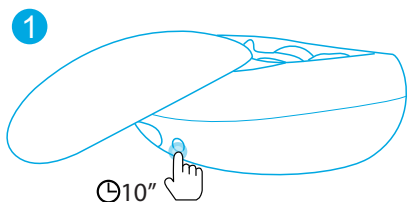
Apple and the Apple logo are trademarks of Apple Inc.

Reset

Reset the earbuds if the earbuds cannot connect with each other properly or cannot connect with your device properly.

Place the earbuds into the charging case and make sure they are being charged. Keep the charging case open, then press and hold the button on the charging case for 10 seconds until the LED indicators on both earbuds flashes red 3 times.

→ All the memory data will be cleared.



Specifications

 Specifications are subject to change without notice.

Input	5 V --- 500 mA
Rated output power	5 mW @ 1% THD
Battery capacity	65 mA x 2 (earbuds); 500 mA (charging case)
Charging time	1.5 hours
Playtime (varies by volume level and content)	8 hours (Totally 32 hours with the charging case)
Driver size	Dynamic and Balanced Armature
Frequency response	20 Hz - 20 kHz
Impedance	8 Ω
Bluetooth version	V 5.0
Bluetooth frequency	2402-2480 MHz
Bluetooth profile	AVRCP1.6, A2DP1.3, HFP1.7, HSP
Audio codec format	SBC, AAC, aptX
Bluetooth range	10 m / 33 ft

Qualcomm® aptXTM Technical specifications

Compression ratio: 4:1

Word depth: Support 16bit and 24bit

Decoding delay: Sample rate 48kHz<2ms

Dynamic range: 16bit>92dB, 24bit>120dB

Data rates: 352kbps

Decode mode: Stereo

Qualcomm aptX is a product of Qualcomm Technologies, Inc. and/or its subsidiaries. Qualcomm is a trademark of Qualcomm Incorporated, registered in the United States and other countries. aptX is a trademark of Qualcomm Technologies International, Ltd., registered in the United States and other countries.