

# Installing Drobo Dashboard

## Overview

Drobo Dashboard is the app for setting up and managing your Drobo. This article explains how to install it.

After installation, you have the option to enable automatic Drobo Dashboard software updates, which we highly recommend. Alternatively, you can get updates at the [Drobo Start Page](#).

**Note:** You need a full admin user account and Internet access on the computer on which you install Drobo Dashboard.

## How to install Drobo Dashboard

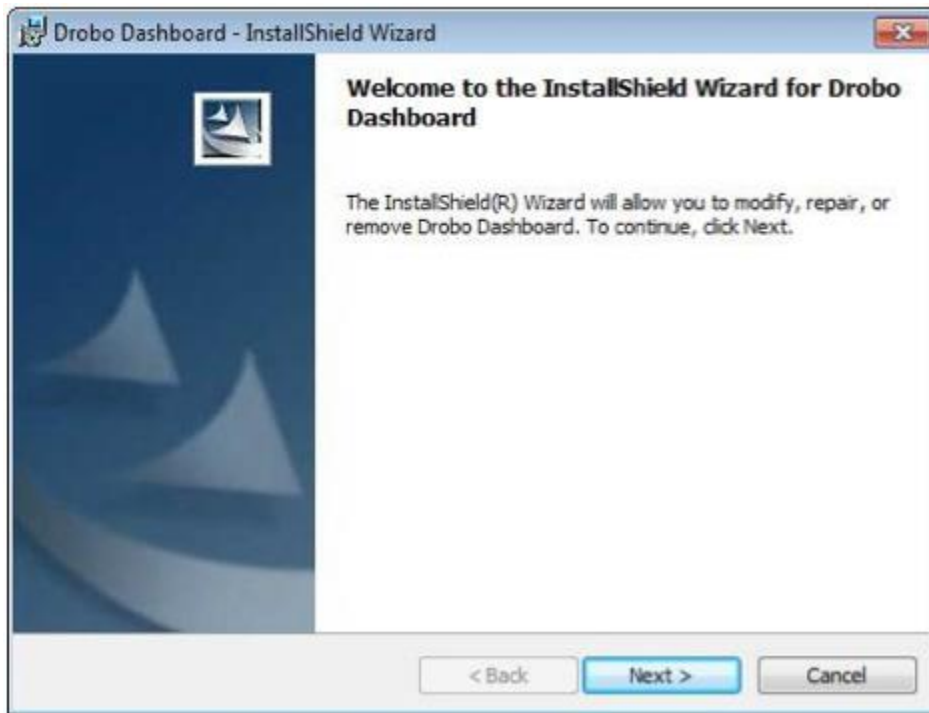
1. Go to the [Drobo Start Page](#) and get the Drobo Dashboard version that matches your Drobo. Once it's downloaded, launch the installer.

**Note:** The first time you install Drobo Dashboard, you will be asked to select a language from the menu. Please do this. The Drobo Dashboard Installer (or Installation Wizard) opens, preparing to install.

On a Mac, this screen appears as follows.



In Windows, this screen appears as follows.



2. Click the **Next** (Windows) or **Continue** button (Mac), as appropriate.

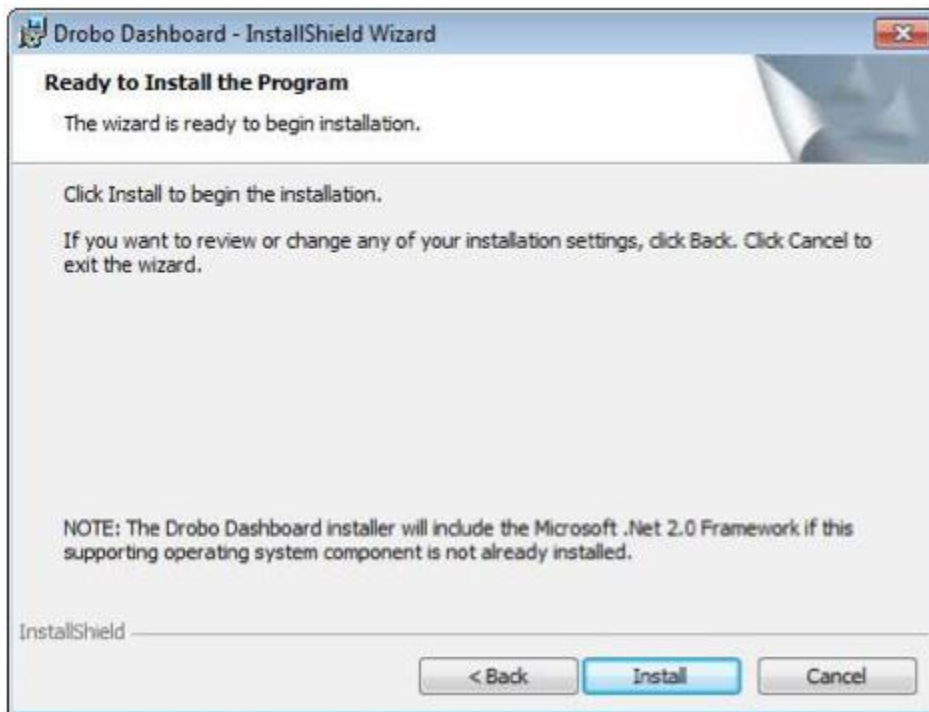
**Note:** If the Microsoft iSCSI Initiator window appears, click the Yes button. Follow the instructions to install the Microsoft iSCSI Initiator, clicking the Next button as needed. When finished, you are returned to the InstallShield Wizard to continue installation.

3. Follow the directions of the Installation Wizard, clicking the Next or Continue button after each page, as appropriate.
4. When you reach the installation page, click the **Install** button.

On a Mac, this screen appears as follows.



In Windows, this screen appears as follows.



Depending on your operating system, one of the following may result:

- On a Mac, you will be prompted for your administrator password. Enter it and click the appropriate button.
  - In some Windows operating systems, a Windows Access Control dialog box appears, asking if you want to allow changes to your computer. Click the **Allow** or **Yes** button, as appropriate. Drobo Dashboard installs on your computer.
5. If you are on a Mac, you will be prompted to restart your computer in order to complete installation. Please do so.
  6. After installation is complete, be sure the **Launch Drobo Dashboard** checkbox is selected and then click the **Finish** button.

**Note:** Before Drobo Dashboard launches, you may be asked if Drobo can collect anonymous information on your usage. Click **Yes** or **No**, as desired. You may also be prompted to register your Drobo now.

The Drobo Dashboard application launches, and the All Drobos page opens. After a few seconds, Drobo "discovers" all Drobo devices currently connected and displays them on this page. If you have no Drobo connected or powered on, a "No Drobos Detected" message displays until you do.

All Drobos ( 1 )

Status

Capacity

Volumes

Tools

Drobo Settings

Dashboard Preferences

Help and Support



[www.drobo.com](http://www.drobo.com)

# All Drobos

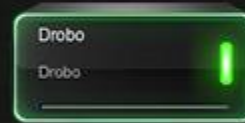
Icons | List

Sort By :

Health

Name

Product



[Drobo Discovery Settings](#)



Double-click a Drobo to open its details screen.