



Ace Medical Supply, LLC

Right Equipment! Better Life!

Specializing in Manual Wheelchairs, Hospital Beds, and Low Air Loss(LAL) Mattress



Wheelchair, Manual

Light Weight

Medline K4 Excel Deluxe Model

Majority of medical supply companies deliver much cheaper basic models for manual wheelchairs. However, as a part of senior and community, Ace Medical Supply LLC provides one of the most deluxe model for ALL Medicare patients.

The Medline Excel K4 Lightweight Wheelchair Weighs 33 lbs. Quick release axles allow **tool-free** removal of the wheels. Swing-back arms with patent-pending push-button arm release. Height adjustable seat back. Cast aluminum seat cradles for durability. This durable chair features a carbon steel frame with chip-resistant chrome plating and threaded seat screw inserts reduce stripping from upholstery changes. Sealed bearings in fork housing, rear wheels and front wheels keep dirt out and are maintenance free. Elevating legrest models features a notched, maintenance-free stainless steel ratchet bar. Padded and upholstered armrests and calf pads provide style and comfort. Limited lifetime warranty on frame and crossframe. One year warranty on upholstery, wheel lock assemblies, wheels, tires, castors, handgrips, legrests, arms, armpads, handrims, quick release, axles, and any other "wearable" parts. **COLOR: Black.**

- Quick release axles allow tool-free removal of the wheels
- Features a carbon steel frame with chip-resistant chrome plating
- Weighs only 33 Lbs (excluding foot rigging)
- Latex-free
- Height adjustable seat back
- Cast aluminum cradles for durability
- Carbon steel frame with chip-resistant chrome plating
- Sealed bearings in fork housing, rear wheels keep dirt out and are maintenance free
- 16" Swing-Back Desk Length Arms
- Swing-Away Detachable Elevating Legrest



EXCEL

Wheelchairs



Built Stronger to Last Longer

Medline Quality. We Build 'em Better.

Competitors (Problems)

Medline (Solutions)



Elevated leg rest supports wear and rust, resulting in leg rests slipping out of position over time. (Worn competitive chair shown.)



Notched, stainless steel ratchet bars on elevated leg rests will not fall down and are resistant to rust.



Thin coatings of chrome plating results in greater rusting of frame and components over time. (Rusted competitive chair shown.)



Double coating of chrome plating and powder coating on frame and components gives maximum protection against rusting.



Plastic seat cradles and armlocks break easily. (Broken competitive seat cradles shown.)



Aluminum seat cradles and armlocks stay strong and sturdy resisting any breakage.



Cheap bronze welds do not hold up well over time and under heavy loads. (Bent competitive armrest shown.)



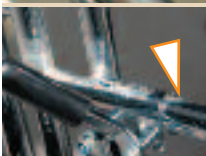
Tig welding throughout the frame means our frames are stronger and will last longer; and provides **(300# capacity on most Medline chairs vs. 250# competitors).**



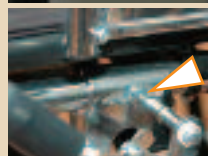
Upholstery screws strip out over time, since the screws are inserted into hollow frame tubes. (Stripped out competitive chair shown.)



Brass threaded inserts used to fasten down upholstery, ensure that no stripping occurs over time.



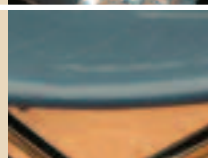
Wheel locks easily loosen up over time, because the locks are mounted on slippery frame tubes. (Loose competitive lock shown.)



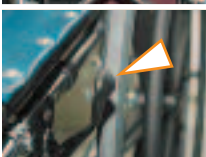
Knurled tubing under wheel locks ensures locks stay in position and do not loosen up.



Sagging and uncomfortable upholstery results in less comfort for patient. (Sagging competitive upholstery shown.)



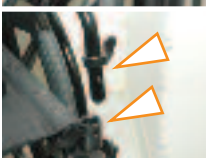
Higher-density, thicker foam in upholstery with stronger seams and extra plastic layer bonded to vinyl, results in greater comfort and less stretching over time.



Uncomfortable, hard-to-grip handles on wheel locks, legrests, and flip-back arms. (Uncomfortable competitive lock handle shown.)



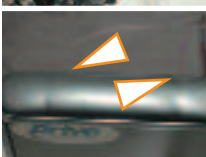
Comfortable, easy-to-grip handles on wheel locks are perfect for patients with limited dexterity.



Plastic arm locks break, and are hard to operate. (Cheap plastic competitive parts shown.)



Aluminum arm lock cradles and comfortable, flip-back levers are easy to operate and long-lasting for patients with limited dexterity.



Inconsistent product quality means you can't always rely on getting defect-free products. (Wrinkled arm pad on competitive chair shown.)



Consistent product quality, as a result of Medline's application of Six Sigma quality techniques.

WARNING:
This chair contains latex, which may lead to allergic reactions

Many chairs contain latex, resulting in risks to both patients and caregivers.



Most chairs are latex-free, and properly labeled so patients and caregivers are assured of no dangerous latex allergic reactions.

Easily Converts to a Transport Chair

Exclusively from Medline:
optional Quick Release
12" Transport Wheel Accessory.
(WCAWHEELKIT)



Quick release axles:
push-button design allows
tool-free removal of the wheels.



Scissor frame style:
reduces weight up to 5 lbs
over slide tube style frames.



Three axle positions:
adjustable for Standard,
Hemi and Transport chair.



**Strong, Cast Aluminum
Seat Cradles:**
not plastic as typically seen
on chairs.



FEATURES :

- Nylon upholstery is breathable and light weight.
- Threaded seat screw inserts reduce stripping from upholstery changes.
- Padded nylon armrests.
- No spacers on front casters, making wheel changes easier.
- Carbon steel frame.
- Sealed bearings in fork housing, rear wheels and front wheels keep dirt out and are maintenance free.
- Mag-style composite wheels are extremely durable and easy to clean.
- Heavy-duty fork and welded fork stems minimize wobbling.
- Quick-release wheel lock allows easy relocation of wheel lock for setting in transport mode.

EXCEL K4

SPECIFICATIONS

Weight Capacity	300/350 lbs
Seat Width	16", 18", 20", 22"
Seat Depth	16", 18"
Standard Chart Pocket	no
Footplates	composite
Dual Axle	yes
HCPCS Code	K0004
For full specifications see pages	28-29

ACCESSORIES :

O ₂ Holder	MDS85181U
I.V. Pole	MDS85183
O ₂ / I.V. Combo	MDS85190
Anti-Fold Device	MDS85196
Anti-Tip Device	MDS85189WK4



MDS806550

FEATURES :

- Weighs 33 pounds (excluding foot riggings) (16", 18").
- Quick release axles allow tool-free removal of the wheels (16", 18").
- Swing-back arms with patent-pending push-button arm release.
- Height adjustable seat back (16"-18").
- Cast aluminum seat cradles for durability.
- Carbon steel frame with chip-resistant chrome plating.
- Threaded seat screw inserts reduce stripping from upholstery changes.
- Padded and upholstered armrests and calf pads.
- Sealed bearings in fork housing, rear wheels and front wheels keep dirt out and are maintenance free.
- Elevating legrest models feature a notched, maintenance-free stainless steel ratchet bar.

Item #	Seat Depth	Seat Width	Description
MDS806500N*	16"	16"	Swing-back desk-length arms, swing-away detachable footrests, quick release axles
MDS806550N*	16"	16"	Swing-back desk-length arms, swing-away detachable elevating legrests, quick release axles
MDS806500NFLA*	16"	16"	Swing-back, removable full-length arms, swing-away detachable footrests, quick release axles
MDS806500*	16"	18"	Swing-back desk-length arms, swing-away detachable footrests, quick release axles
MDS806550*	16"	18"	Swing-back desk-length arms, swing-away detachable elevating legrests, quick release axles
MDS806500FLA*	16"	18"	Swing-back, removable full-length arms, swing-away detachable footrests, quick release axles
MDS806550FLA*	16"	18"	Swing-back, removable full-length arms, swing-away detachable elevating legrests, quick release axles
MDS806500PLUS*	16"	18"	MDS806500 including anti-tippers and desk length height adjustable arms, quick release axles
MDS806550PLUS*	16"	18"	MDS806550 including anti-tippers and desk length height adjustable arms, quick release axles
MDS806560	18"	20"	Swing-back desk-length arms, swing-away detachable footrests, K0007 reimbursement code
MDS806560PLUS	18"	20"	MDS806560 including anti-tippers and desk length height adjustable arms
MDS806565	18"	20"	Swing-back desk-length arms, swing-away detachable elevating legrests, K0007 reimbursement code
MDS806570	18"	+ +22"	Swing-back desk-length arms, swing-away detachable footrests, K0007 reimbursement code
MDS806575	18"	+ +22"	Swing-back desk-length arms, swing-away detachable elevating legrests, K0007 reimbursement code

Upholstery Color: Black *Height adjustable back ++Available soon with quick-release wheel feature