

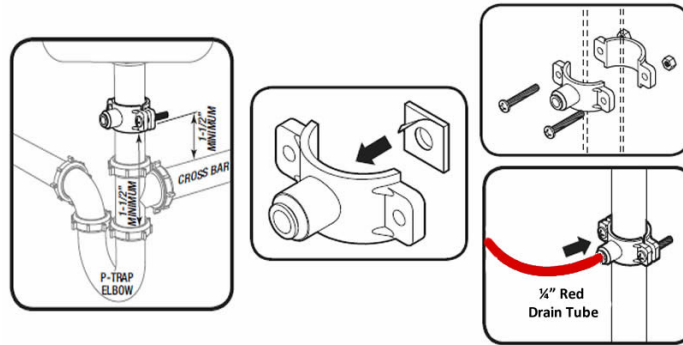
AVOID A WATER LEAK FROM THE FAUCET VENT AT THE BASE WITH PROPER INSTALLATION OF YOUR DRAIN SADDLE FOR THE AIR-GAP FAUCET

Caution - If you have a garbage disposal, do not install the drain saddle near it. Installation of the drain saddle must be either above the garbage disposal, or if a second sink drain is available, install it above the cross bar on the second drain. Installation of the drain saddle near a garbage disposal may cause the drain line to plug. If no other installation of drain line is available, Premier offers drain line installation kit (part number [WP164020](#)) that can be used with garbage disposals.

Step 1 - The small square black foam gasket with a circle cut out of the middle must be applied to the inside of the drain saddle. Remove sticky tape backing and stick to the drain saddle as shown.

Step 2 - The drain saddle must be installed at least 1 1/2" above the nut of the P-Trap elbow or cross bar from the garbage disposal to insure proper drainage. Using the 1/4" drill bit, drill into the drain pipe at best available location as specified above, for drain saddle installation. *Caution - Take extreme caution to only drill through one side of the drain pipe. Do not over tighten the screws. It may crack the drain saddle.*

Step 3 - Assemble the drain saddle around the drain pipe and align drain saddle fitting opening with the hole drilled in the previous step - you may use a small screwdriver to feed through the drain saddle into the drain pipe to aid with the alignment. Using a Phillips screw driver tighten the drain saddle bolts evenly and securely on both sides.



Caution - The black 3/8" drain tube must be as SHORT and STRAIGHT as possible to the drain saddle, making a downward slope from faucet to drain saddle to allow for proper drainage. This is a gravity fed line and if there is any bend or dip in the tube, the rinse water will not flow into the drain properly. Water may back up and come out the air gap hole in the back of the faucet.

Step 4 - Measure the 3/8" BLACK tube from faucet to the drain saddle on the drain pipe and make a straight cut to the correct length.

Step 5 - Connect the black tube to the open quick connect fitting on the drain saddle by pushing the tube all the way to the tube stop. If necessary, you can use any Food Grade Lubricant (i.e. Olive Oil); Water Soluble Lubricant (i.e. KY Jelly®) or other water based lubricants may be used. *Caution - Petroleum based lubricants (i.e. Vaseline®) MUST NOT BE USED as they can do damage.*

