

How to connect TanTan Smart Plugs to Smart Life

Note:

1. Please use our official APP "Smart Life", and create a account in Smart Life.
2. Choose 2.4G Wifi for the first connection.
3. Two mode for choosing: Easy Mode and AP Mode. Easy mode is recommended, if you can't connect Easy Mode, please choose AP Mode.
4. The maximum load current is 10A.

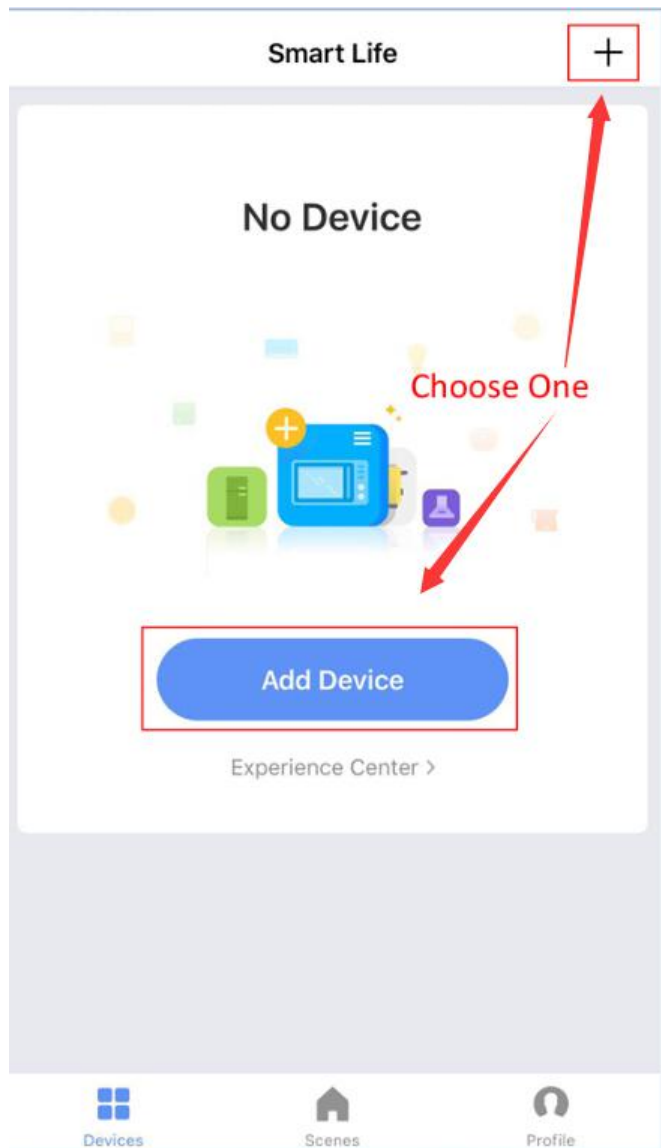
Smart Life

Scan the following QR code to download the APP "Smart Life", and use your phone number or email to create your own account of "Smart Life".



Easy Mode

1. Please choose “Add Device” or the “+”:



2. Choose “Electrical outlet”

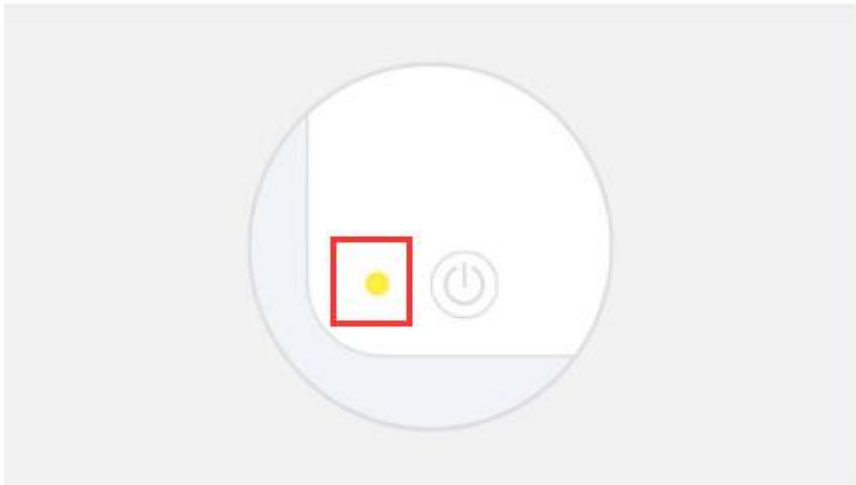


3. Make sure “the indicator light rapidly blinks”, then “Confirm”;

< Back

Add Device

AP Mode

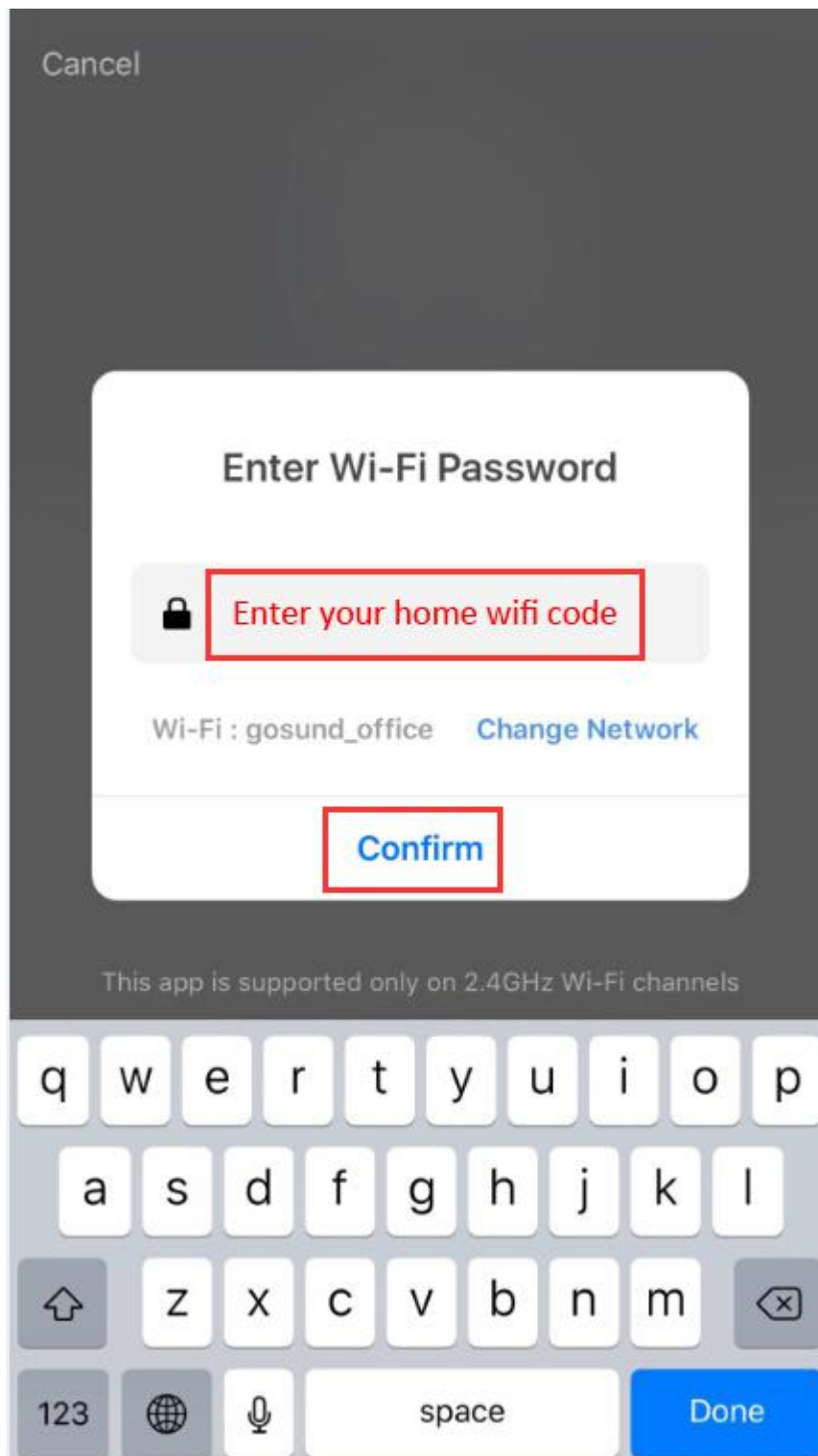


Power on the device and confirm
that indicator light **rapidly blinks**

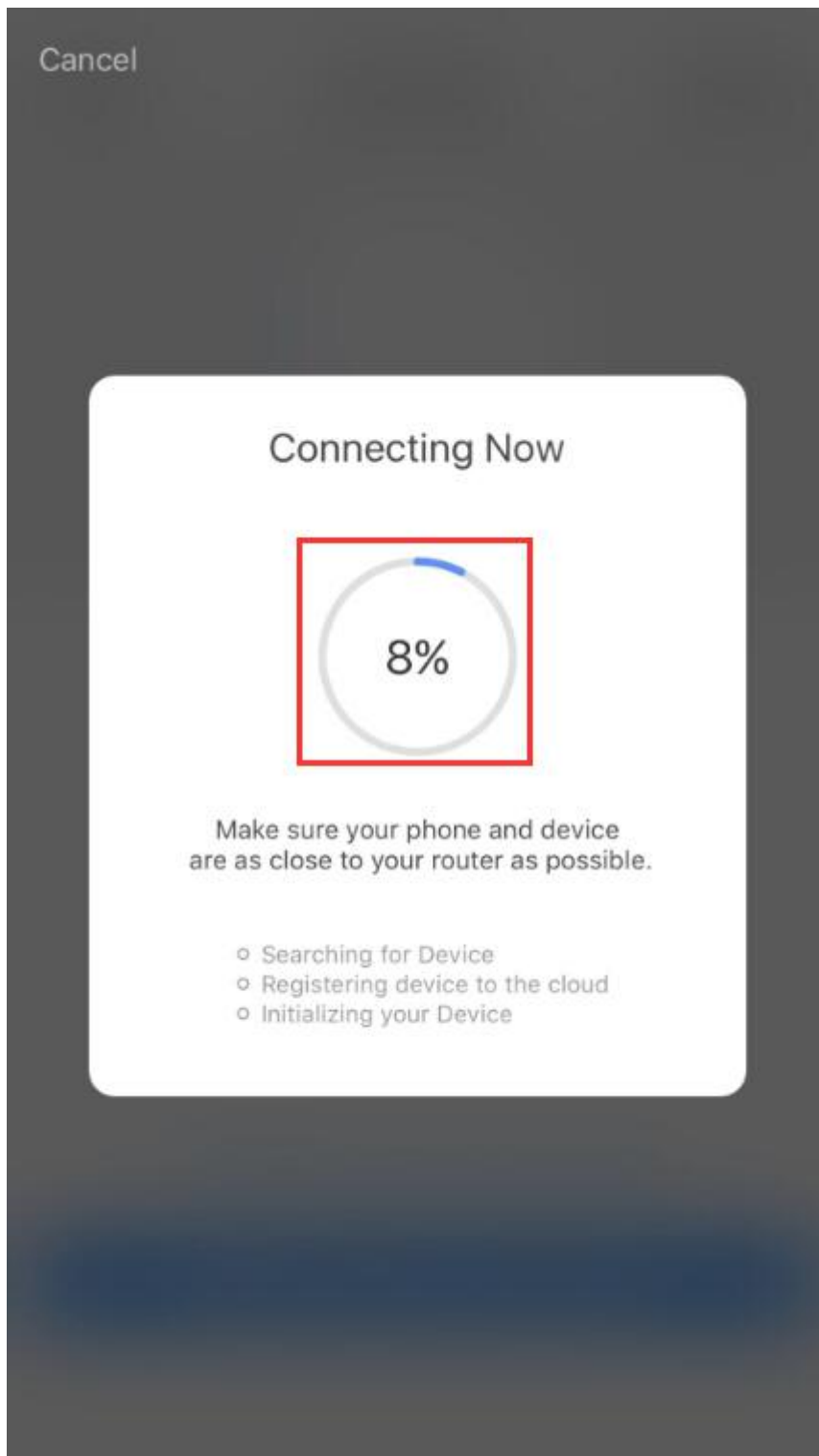
[How to make indicator rapidly blink](#)

Confirm indicator rapidly blink

4. Enter your home wifi code, please make sure the wifi code correct, then confirm.



5. Wait the connection to 100%



6. Successfully, and you can rename the plug if you like

Add Device



Successfully Added 1 Device(s)

wp2



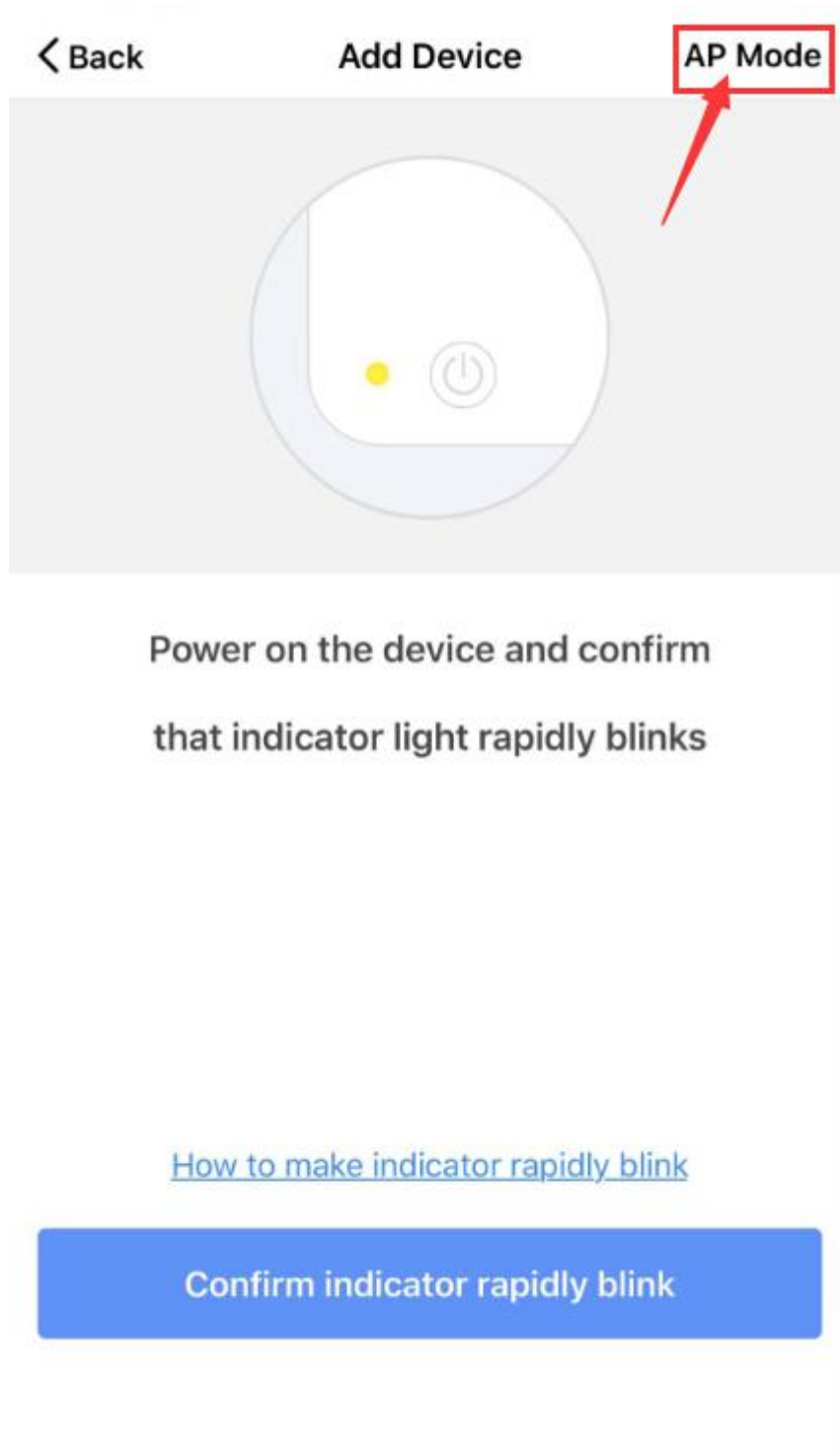
Rename it if you like.

Share with Family

Done

AP Mode

1. Choose AP Mode:



Power on the device and confirm
that indicator light rapidly blinks

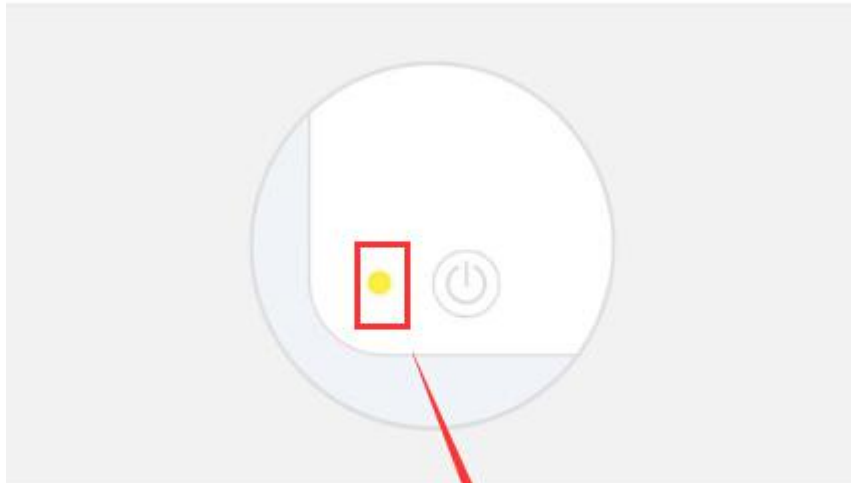
[How to make indicator rapidly blink](#)

Confirm indicator rapidly blink

2. Make sure “the indicator light slowly blinks”, then “Confirm”;

< Back

Add Device

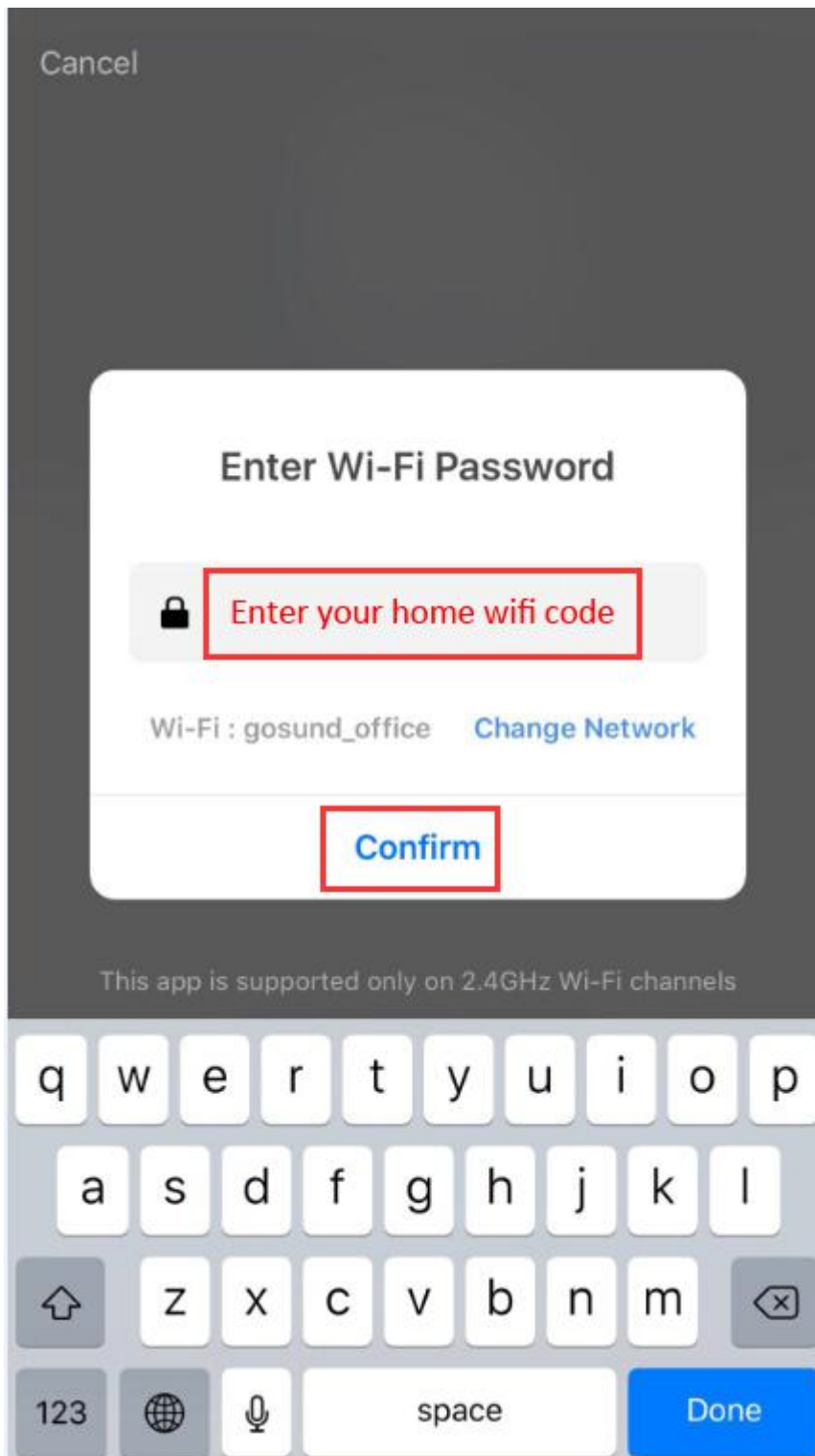


Power on the device and confirm
that indicator **light slowly blinks**

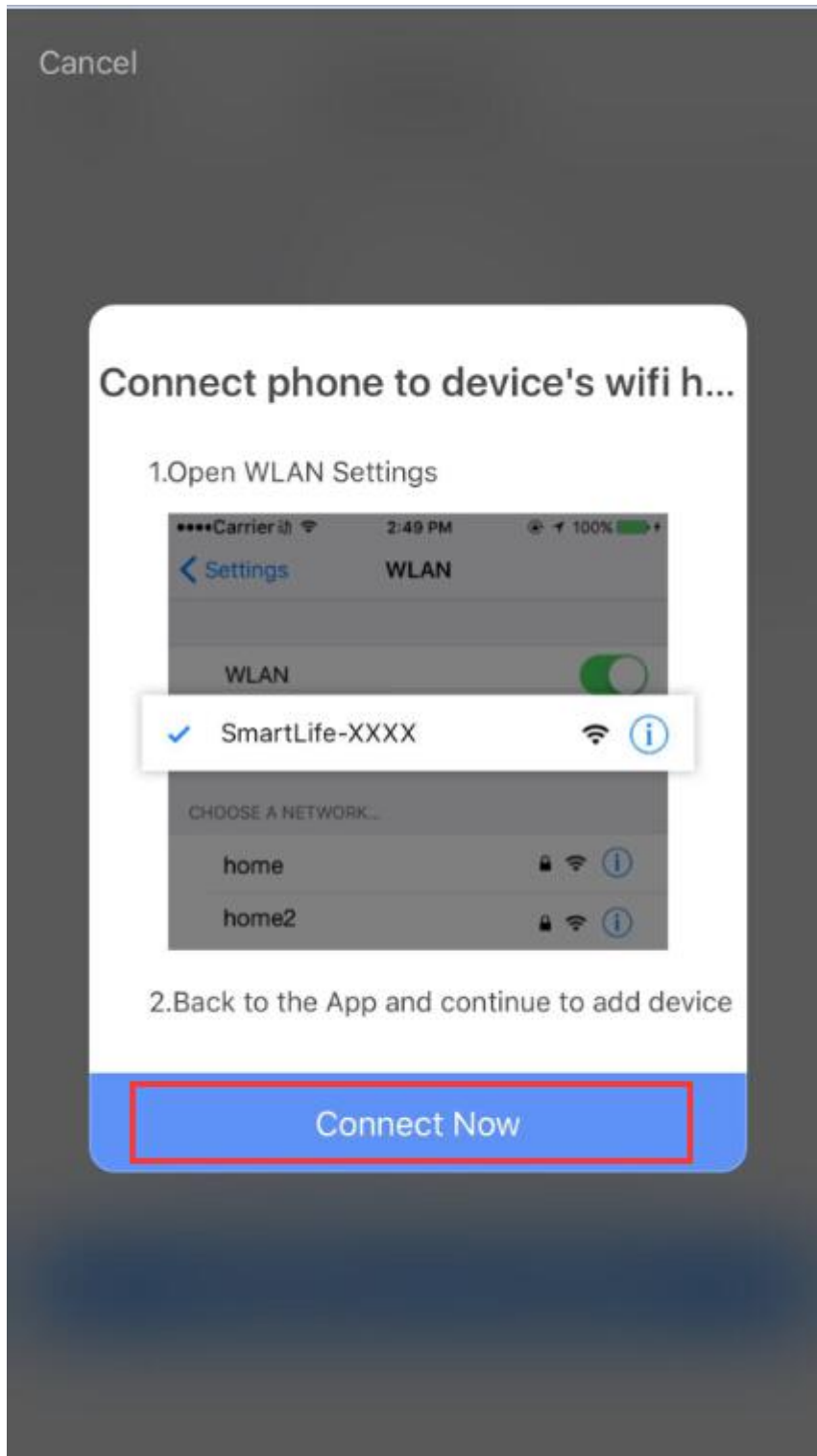
[How to make indicator slowly blink](#)

Confirm indicator slowly blink

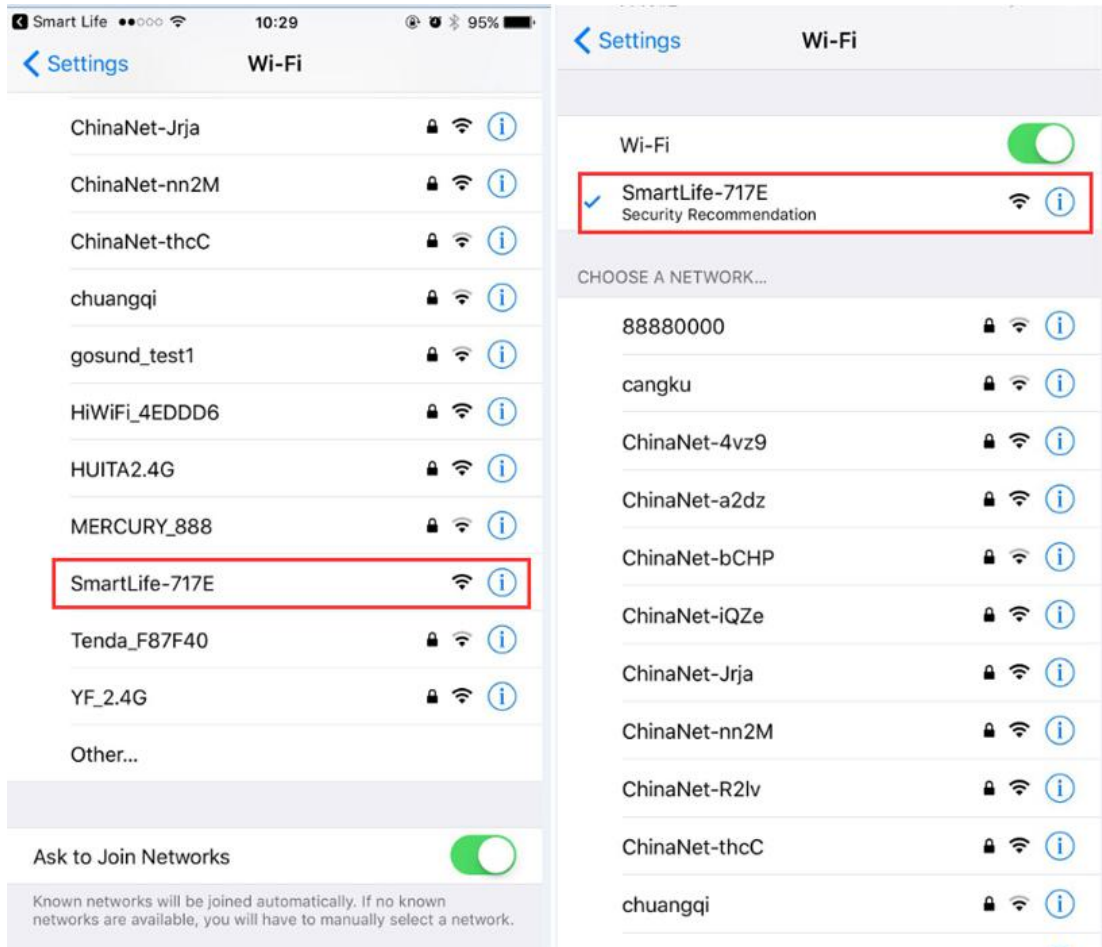
3. Enter your home wifi code, please make sure the wifi code correct, then confirm.



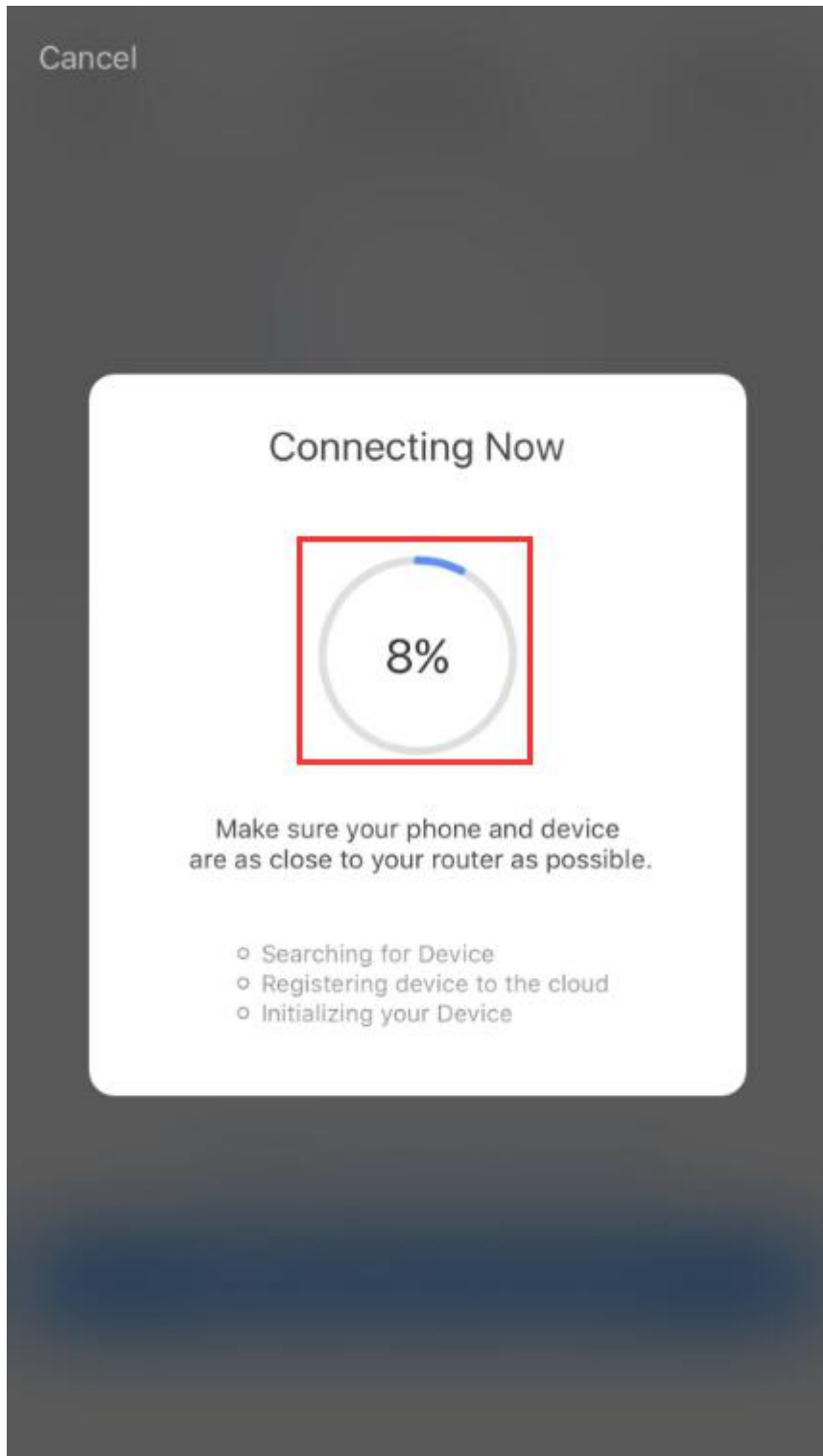
4. Click "Connect Now"



5. Then you will come to your Wi-Fi Setting, and choose the “SmartLife-XXXX”



6. Back to "Smart Life" APP, it will show "Connecting Now", wait the connection to 100%.



7. Successfully, and you can rename the plug if you like

Add Device



Successfully Added 1 Device(s)

wp2



Rename it if you like.

Share with Family

Done