

Charging the Apple Watch® and iPhone® on the Belkin PowerHouse™ Charge Dock,

The Belkin PowerHouse™ Charge Dock for Apple Watch® + iPhone®, F8J200 charges the Apple Watch and iPhone either together or separately at the same rate. Follow the steps below to know how to charge your Apple Watch and iPhone on the Belkin PowerHouse™ Charge Dock.

NOTE: Make sure that the Belkin F8J200 is connected to a power source.

Charging the Apple Watch

Attach the back panel of the watch to the built-in Apple Watch Magnetic Charging Module.



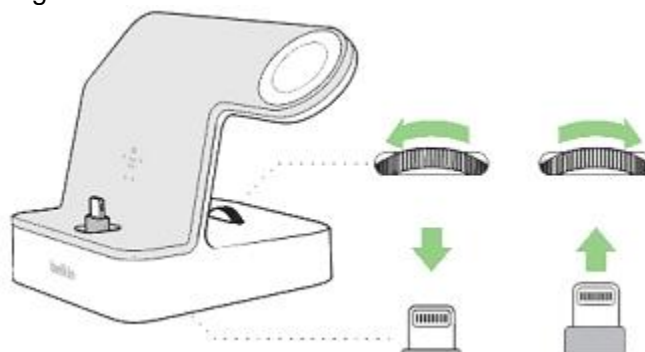
NOTE: If the watch is placed upside down, the built-in Apple Watch Magnetic Charging Module will still charge the watch.

The Apple Watch should be charged now.

Charging the iPhone

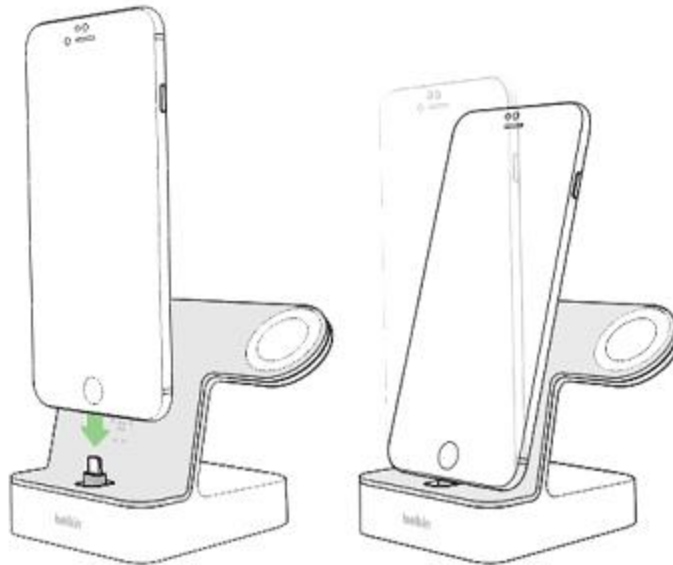
Step 1:

Adjust the dial on the charge dock.



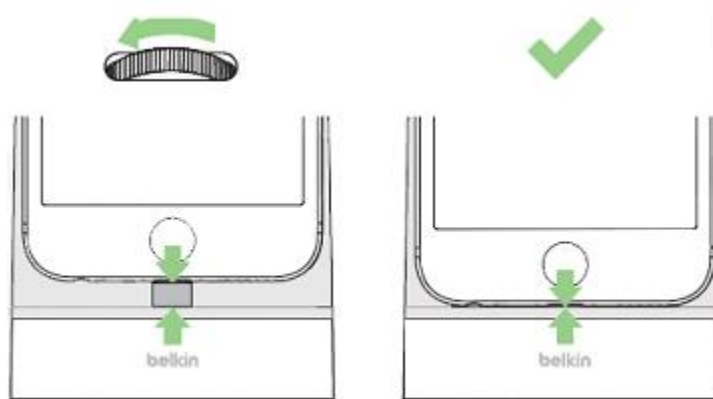
Step 2:

Place the iPhone on the connector and lean it on the bar.



Step 3:

Secure a snug fit between the iPhone and the connector by adjusting the dial.



Your iPhone should now be charged.