



## User Manual

### USB-C 8-in-1 Hub

### Product Overview



Removable Rugged Case

**USB 2.0**  
480Mbps, 5V@0.9A

**Ethernet**  
Up to 1Gbps

**HDMI**  
4K@30Hz

**USB C Power Delivery**  
Up to 100W

**USB 3.0**  
5Gbps, 5V@0.9A

**USB 3.0**  
5Gbps, 5V@0.9A

**MicroSD**  
Up to 104MB/s

**SD**  
Up to 104MB/s

Hub Output Port (USB-C)



Hub Connector

### Tech Specs

#### 2 x USB 3.0 Ports:

Data transfer speed up to 5Gbps; Charging up to 5V@0.9A

#### 1 x SD Card Slot:

UHS-1, speed up to 104MB/s

#### 1 x MicroSD Card Slot:

UHS-1, speed up to 104MB/s

#### 1 x USB 2.0 Port:

Data transfer speed up to 480Mbps; Charging up to 5V@0.9A

#### 1 x Ethernet Port:

Speed up to 1Gbps

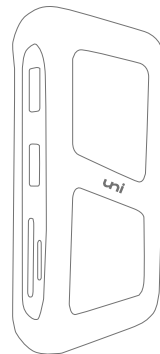
#### 1 x HDMI Port:

Resolution up to 4K@30Hz

#### 1 x USB-C Power Delivery:

Up to 100W (Note: data transfer not supported)

### Specification

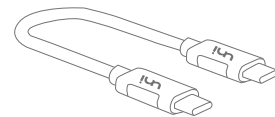


#### Hub Size

4.3 x 2.3 x 0.9 inch  
10.8 x 5.7 x 2.2 cm

#### Hub Weight

102 g / 3.6 oz



#### Connector Length

8.7 inch / 22 cm

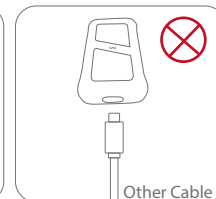
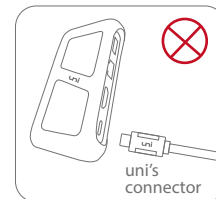
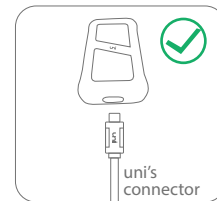
#### Connector Weight

12.2 g / 0.4 oz

### Using Your Hub

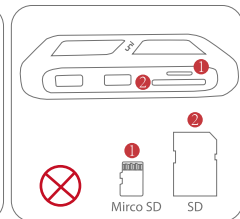
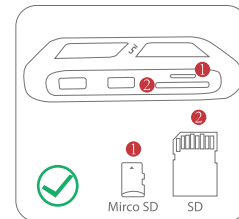
#### Hub Output Port:

- Only use uni's hub connector to connect hub and your devices.



#### SD/MicroSD Card Slots:

- Compatible with SD, SDHC, SDXC, MicroSD, MicroSDHC, Micro SDXC cards in UHS-I mode up to 104MB/sec.
- To insert SD cards correctly: Make sure the SD card's label-side facing down when insert in to hub.
- To insert MicroSD cards correctly: Make sure the MicroSD card's label-side facing up when insert in to hub.
- For iOS devices, supports only original format files (e.g.: \*.CR2 for Canon, \*.NEF for Nikon) of the camera storage card.



### USB 3.0 Ports:

- To transfer data at maximum speed, your computer, peripherals, cables and software MUST ALL support USB 3.0.

### Ethernet Port:

- To reach maximum internet speed (up to 1Gbps), your computer, router, peripherals, cables and software MUST ALL support and set up to 1Gbps Internet.

### HDMI Port:

- To stream video at 4K 30Hz resolution, your computer, peripherals, cables and software MUST ALL support 4K 30Hz HDMI input/output.

### USB-C Power Delivery:

- To charge at maximum speed (up to 100W), your charger, charging cable, and charging device MUST ALL support 100W USB-C Power Delivery.

## Troubleshooting

### 1. My hub is charging slower than I expected:

- Check if your charger, charging cable and charging devices ALL support 100W power delivery;
- All ports uses watts for operation, thus, it's normal that the actual charging wattage is 7.5W-10W lower.

### 2. My monitor is not steaming appropriately:

- Make sure the USB-C ports of your devices support HDMI video output. Please contact the manufacturer of your devices if needed;
- Try to use another HDMI cable;
- Try to connect another USB-C port or another HDMI port;
- If your devices is MacBook, please reset SMC (system management control). For more details, please check: <https://support.apple.com/en-us/HT201295>;
- Try to reverse and replug the dock connector with your devices.

### 3. My internet cannot reach to 1Gbps:

- Check if your computer, router, peripherals, cables and software ALL support and set up to 1Gbps;
- Download the driver [http://bit.ly/USB-C\\_LAN\\_drive](http://bit.ly/USB-C_LAN_drive) and then reconnect to internet;
- Try to restart your computer with the hub plugged in, then reconnect to internet.

### 4. My hub cannot read my SD/MicroSD cards:

- Make sure the cards are inserted correctly:
  - To insert SD cards correctly: Make sure the SD card's label-side facing down when insert in to dock.
  - To insert MicroSD cards correctly: Make sure the MicroSD card's label-side facing up when insert in to dock.
- Check if the cards are health for normal operation.

### 5. My hub is getting hot, is this normal?

- Yes, constantly converting signals between digital and analog, these devices do get hot;
- Try to use another HDMI cable if the hub is getting too hot;
- We have taken this issue into consideration at the beginning phrase of our product design, did our best to reduce the heat on the surface during use. Safe to touch and safe to use for sure.

### Can't find your question? Ask us:

✉ [support@uniaccessories.io](mailto:support@uniaccessories.io)

## uniAccessories:

### Quality & Design & Package & Customer Service

The uniAccessories Advantage:

- Unconditional Lifetime Warranty without any hassle
- All costs covered by uniAccessories during your Lifetime Replacement process
- Friendly and easy-to-reach customer service to solve your problems within 24hrs

We hope you never have the need, but if you do, we are always here to help:

✉ [support@uniaccessories.io](mailto:support@uniaccessories.io)

🌐 [www.uniaccessories.io/support](http://www.uniaccessories.io/support)

### Like us? Follow us:

🌐 [www.uniaccessories.io](http://www.uniaccessories.io)

📘 [uniaccessories](https://www.facebook.com/uniaccessories)

📷 [uni.accessories](https://www.instagram.com/uni.accessories)

📺 [uniAccessories](https://www.youtube.com/uniAccessories)