

## BRG1350AVRLCD BRG1500AVRLCD User's Manual

### PRODUCT REGISTRATION

Thank you for purchasing a CyberPower product. Please take a few minutes to register your product at [www.cpsww.com/registration](http://www.cpsww.com/registration). Registration certifies your product's warranty, confirms your ownership in the event of a product loss or theft and entitles you to free technical support. Register your product now to receive the benefits of CyberPower ownership.

### IMPORTANT SAFETY INSTRUCTIONS (SAVE THESE INSTRUCTIONS)

This Manual Contains Important Instructions that should be followed during Installation and Maintenance of the UPS and batteries.

**CAUTION!** To prevent the risk of fire or electric shock, install in a temperature and humidity controlled indoor area free of conductive contaminants. (Please see specifications for acceptable temperature and humidity range).

**CAUTION!** To reduce the risk of electric shock, do not remove the cover except to service the battery. Turn off and unplug the unit before servicing the batteries. There are no user serviceable parts inside except for the battery.

**CAUTION!** Hazardous live parts inside can be energized by the battery even when the AC input power is disconnected.

**CAUTION!** The UPS must be connected to an AC power outlet with fuse or circuit breaker protection. Do not plug into an outlet that is not grounded. If you need to de-energize this equipment, turn off and unplug the unit.

**CAUTION!** To avoid electric shock, turn off the unit and unplug it from the AC power source before servicing the battery.

**CAUTION!** To reduce the risk of fire, connect only to a circuit provided with 20 amperes maximum branch circuit over current protection in accordance with the National Electric Code, ANSI/NFPA 70.

**DO NOT USE FOR MEDICAL OR LIFE SUPPORT EQUIPMENT!** CyberPower Systems does not sell products for life support or medical applications. **DO NOT** use in any circumstance that would affect the operation and safety of life support equipment, medical applications, or patient care.

**DO NOT USE WITH OR NEAR AQUARIUMS!** To reduce the risk of fire or electric shock, do not use with or near an aquarium. Condensation from the aquarium can cause the unit to short out.

**DO NOT USE THE UPS ON ANY TRANSPORTATION!** To reduce the risk of fire or electric shock, do not use the unit on any transportation such as airplanes or ships. The effect of shock or vibration caused during transit and the damp environment can cause the unit to short out.

### INSTALLING YOUR UPS SYSTEM

#### INTRODUCTION

Thank you for selecting a CyberPower Systems UPS product. This UPS is designed to provide unsurpassed power protection, operation and performance during the lifetime of the product.

#### UNPACKING

Inspect the UPS upon receipt. The box should contain the following:

(a) UPS (b) User's manual (c) USB A+B type cable (d) Function Setup Guide

\*PowerPanel® Personal Edition software is available on our website. Please visit [www.cpsww.com](http://www.cpsww.com) and go to the Software Section for free download.

#### OVERVIEW

The BRG1350AVRLCD/BRG1500AVRLCD provides complete power protection from utility power that is not always consistent. The BRG1350AVRLCD/BRG1500AVRLCD features 1500 Joules of surge protection. Both units provide long lasting battery backup during power outages with maintenance free batteries. The BRG1350AVRLCD/BRG1500AVRLCD ensures consistent power to your computer system and includes software that will automatically save your open files and shutdown your computer system during a utility power loss.

#### AUTOMATIC VOLTAGE REGULATOR

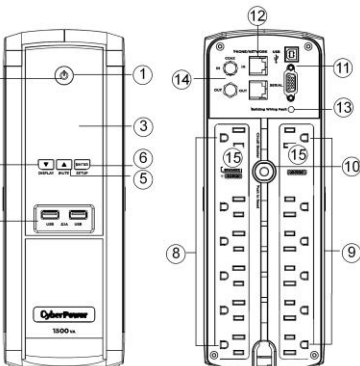
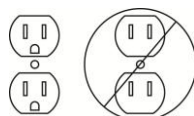
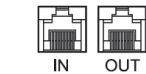
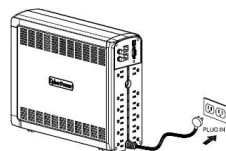
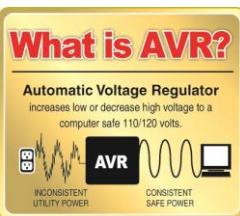
The BRG1350AVRLCD/BRG1500AVRLCD stabilizes inconsistent utility power voltage to nominal levels that are safe for equipment. Inconsistent incoming utility power may be damaging to important data files and hardware, but with Automatic Voltage Regulation (AVR), damaging voltage levels are corrected to safe levels. AVR automatically increases low utility power or decreases high utility power to a consistent and safe 110/120 volts.

#### HOW TO DETERMINE THE POWER REQUIREMENTS OF YOUR EQUIPMENT

- Ensure that the equipment plugged into the outlet does not exceed the UPS's rated capacity (1350VA/810W for BRG1350AVRLCD, 1500VA/900W for BRG1500AVRLCD). If the rated capacities of the units are exceeded, an overload condition may occur and cause the UPS to shut down or the circuit breaker to trip.
- There are many factors that can affect the amount of power that your computer system will require. It is suggested that the load placed on the battery outlets not exceed 80% of the unit's capacity.

#### HARDWARE INSTALLATION GUIDE

- Your new UPS may be used immediately upon receipt. However, after receiving a new UPS, to ensure the battery's maximum charge capacity, it is recommended that you charge the battery for at least 8 hours. Your UPS is equipped with an auto-charge feature. When the UPS is plugged into an AC outlet, the battery will automatically charge whether the UPS is turned on or off.
- Note: This UPS is designed with a safety feature to keep the system from being turned on during shipment. The first time you turn the UPS on, you will need to have it connected to AC power or it will not power up.
- With the UPS unit turned off and unplugged, connect your computer, monitor, and any other peripherals requiring battery backup into the battery power supplied outlets. **DO NOT plug a laser printer, paper shredder, copier, space heater, vacuum, sump pump or other large electrical devices into the "Battery and Surge Protected Outlets". The power demands of these devices may overload and damage the UPS.**
- To protect a fax, phone or modem, connect a telephone cable or network cable from the wall jack outlet to the IN jack of the UPS. Connect a telephone cable or network cable from the OUT jack of the UPS to a fax machine, telephone, modem, or network devices.
- Plug the UPS into a 2 pole, 3 wire grounded receptacle (wall outlet). Make sure the wall branch outlet is protected by a fuse or circuit breaker and does not service equipment with large electrical demands (e.g. air conditioner, copier, etc...). The warranty prohibits the use of extension cords, outlet strips, and surge strips.
- Press the power switch to turn the unit on. The Power On indicator light will illuminate and the unit will "beep". If an overload is detected, an audible alarm will sound and the unit will emit one long beep. To correct this, turn the UPS off and unplug at least one piece of equipment from the battery power supplied outlets. Make sure the circuit breaker is depressed and then turn the UPS on.
- To maintain optimal battery charge, leave the UPS plugged into an AC outlet at all times.
- To store the UPS for an extended period, cover it and store with the battery fully charged. While in storage, recharge the battery every three months to ensure battery life.
- Ensure the wall outlet and UPS are located near the equipment being attached for proper accessibility.



- Power Switch**  
Used as the master on/off switch for equipment connected to the battery power supplied outlets.
- Power On Indicator**  
This LED is illuminated when the utility power is normal and the UPS outlets are providing power, free of surges and spikes.
- LCD module display**  
The LCD display shows all the UPS information using icons and messages. For more information please review the "Definitions for Illuminated LCD Indicators" section below.
- Down/Display Button**  
The button can be used to select the LCD display contents including Input Voltage, Output Voltage, and Estimated Run Time. Short press the button to scroll down the function menu. Pressing the button for 2 seconds will keep the LCD display always on or turn the LCD display off while in AC/Utility power mode. For more information about the Down/Display Button, please refer to the *Function Setup Guide*.
- Up/Mute Button**  
Short press the button to scroll up the function menu. Holding the button for more than 2 seconds will silence the alarm. For more information about the Up/Mute Button, please refer to the *Function Setup Guide*.
- Enter/Setup Button**  
Press the button for 2 seconds to enter the setup menu and then select the functions for configuration. For more information about the Enter/Setup Button, please refer to the *Function Setup Guide*.
- USB Charging Ports**  
The USB Charging ports provide 5V 2.1A power output.
- Battery and Surge Protected Outlets**  
The UPS has six battery powered/surge suppression outlets for connected equipment to ensure temporary uninterrupted operation of your equipment during a power failure. **(DO NOT plug a laser printer, paper shredder, copier, space heater, vacuum, sump pump or other large electrical devices into the "Battery and Surge Protected Outlets". The power demands of these devices may overload and damage the unit.)**
- Full-Time Surge Protection Outlets**  
The UPS has six surge suppression outlets.
- Circuit Breaker**  
Located on the back of the UPS, the circuit breaker serves to provide overload and fault protection.
- Serial/USB Ports to PC**  
The USB port allows connection and communication between the USB port on the computer and the UPS unit.
- Communication Protection Ports**  
Communication protection ports will protect any standard modem, fax, telephone line, network or Ethernet connection (RJ11/RJ45).
- Wiring Fault Indicator (red)**  
This LED indicator will illuminate to warn the user that a wiring problem exists, such as bad ground, missing ground or reversed wiring. If this is illuminated, disconnect all electrical equipment from the outlet and have an electrician verify the outlet is properly wired. The UPS will not provide surge protection without being plugged into a grounded and properly wired wall outlet.
- Coax/Cable/DSS Surge Protection**  
The Coax/Cable/DSS protection ports will protect any cable modem, CATV converter, or DSS receiver.
- Outlets Designed for AC Adapters**  
The unit has two outlets spaced to allow AC power adapter blocks to be plugged into the UPS without blocking adjacent outlets.

#### REPLACING THE BATTERY

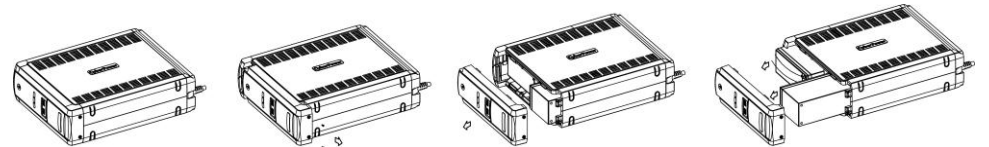
Replacement of batteries located in an OPERATOR ACCESS AREA.

- When replacing batteries, replace with the same number of the following battery: CyberPower / RB1290X2 for the BRG1350AVRLCD and BRG1500AVRLCD.
- CAUTION!** Risk of Energy Hazard, 24V, maximum 9 Ampere-hour battery. Before replacing batteries, remove conductive jewelry such as chains, wrist watches, and rings. High energy conducted through these materials could cause severe burns.
- CAUTION!** Do not dispose of batteries in a fire. The batteries may explode.
- CAUTION!** Do not open or mutilate batteries. Released material is harmful to the skin and eyes. It may be toxic.
- CAUTION:** A battery can present a risk of electrical shock and high short circuit current. The following precautions should be observed when working on batteries:
  - Remove watches rings, or other metal objects.
  - Use tools with insulated handles.

**CAUTION - RISK OF EXPLOSION IF BATTERY IS REPLACED BY AN INCORRECT TYPE. DISPOSE OF USED BATTERIES ACCORDING TO LOCAL REGULATIONS.**

#### BATTERY REPLACEMENT PROCEDURE:

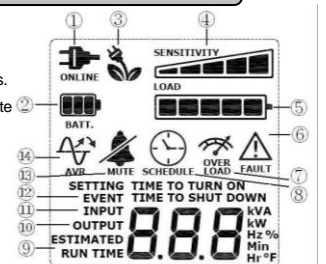
- Turn off and unplug all connected equipment.
- Turn the UPS off and unplug it from the AC power source.
- Turn the UPS on its side.
- Remove the front panel retaining screws located on the bottom of the UPS.
- Slide the battery compartment cover (front panel) completely off of the unit.
- Remove the batteries from the compartment.
- Disconnect the battery wires from the batteries.
- Install the replacement batteries by connecting the red wire (+) and black wire (-) to the same color connectors from both the upper and lower battery pack. Note: Only use new batteries for replacement and both batteries should be replaced at the same time to insure maximum life span.
- Put the batteries back into the compartment.
- Slide back the battery compartment cover and tighten the retaining screws.
- Recharge the UPS for 8-16 hours to fully charge the battery.



**REMINDER:** Batteries are considered **HAZARDOUS WASTE** and must be disposed of properly. Most retailers that sell lead-acid batteries collect used batteries for recycling, as required by local regulations.

### DEFINITIONS FOR ILLUMINATED LCD INDICATORS

- ONLINE:** The UPS is supplying utility power to connected equipment.
- BATTERY:** During a severe brownout or blackout, this icon appears and an alarm sounds (two short beeps followed by a pause) to indicate the UPS is operating from its internal batteries. During a prolonged brownout or blackout, the alarm will beep rapidly every 1/2 second to indicate the UPS's batteries are nearly out of power. You should save files and turn off your equipment immediately or allow the software to shut the system down.
- Energy-Saving:** The UPS in energy-saving bypass mode. See "CyberPower GreenPower UPS™ Technology" section for more information.
- LOAD capacity / Sensitivity setup:** LOAD capacity: This meter displays the approximate output load level (in 20% increments) of the UPS battery outlets.  
Sensitivity setup: This meter is also used to setup the UPS sensitivity when you are in the programming mode. If the connected equipment can tolerate more power events (example: unstable power often associated with stormy weather), select Low Sensitivity and the UPS will go to Battery Mode less often. If the connected equipment is more sensitive to power events, select High Sensitivity and the UPS will go to Battery Mode more often.
- BATTERY capacity:** This meter displays the approximate charge level (in 20% increments) of the UPS's internal battery. During a blackout or severe brownout, the UPS switches to battery power, the BATTERY icon appears, and the charge level decreases.
- FAULT:** This icon appears if there is a problem with the UPS. Press the POWER button to turn the UPS off.  
**F01: Battery Mode or AC/Utility Power Mode Overload fault** (Unplug at least one piece of equipment from battery outlets and turn the UPS on again.)  
**F02: Battery Output Short fault** (Unplug at least one piece of equipment from battery outlets and turn the UPS on again.)  
**F03: Charger Fault** (Contact CyberPower Systems for support.)  
**F04: Internal Fault** (Contact CyberPower Systems for support.)
- OVER LOAD:** This icon appears and an alarm sounds to indicate the battery-supplied outlets are overloaded. To clear the overload, unplug one piece of equipment from the battery-supplied outlets at a time until the icon turns off and the alarm stops.
- SCHEDULE:** Users can setup the schedule to turn on and shut down the computer and UPS through PowerPanel® Personal Edition software. The LCD display will show how much time is left before the UPS will turn back on or shut down.
- ESTIMATED RUNTIME:** This displays the run time estimate of the UPS with current battery capacity and load.
- OUTPUT Meter:** This meter measure, in real time, the AC voltage that the UPS system is providing to the computer, such as normal AC



line mode, AVR mode, and battery backup mode. (Note: The OUTPUT meter shows the status of the battery backup outlets in terms of load, frequency, and voltage.)

**11. INPUT Meter:** This meter measures the AC voltage that the UPS system is receiving from the utility wall outlet. The UPS is designed, through the use of automatic voltage regulation, to continuously correct output voltage to connected equipment to a safe 110/120 voltage output range. In the event of a complete power loss, severe brownout, or over-voltage, the UPS relies on its internal battery to supply consistent 110/120 output voltage. The INPUT voltage meter can be used as a diagnostic tool to identify poor-quality input power.

**12. EVENT:** This meter records the number of power outages.

**13. MUTE:** This icon appears whenever the UPS is in silent mode. However, when there is a problem with the UPS, the alarm will still beep even in silent mode.

**14. AVR (Automatic Voltage Regulation):** This icon appears whenever your UPS is automatically correcting low or high AC line voltage without using battery power. This is a normal, automatic operation of your UPS, and no action is required on your part.

For more information about functions setup, please refer to the *Function Setup Guide*.

## TROUBLESHOOTING

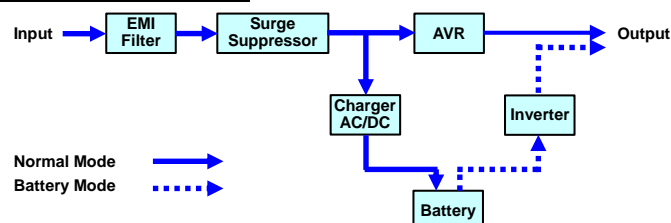
| Problem   | Possible Cause   | Solution  |
|---|--|---|
| Circuit breaker button is projecting from the back of the unit.       | Circuit breaker has tripped due to an overload.  | Turn the UPS off and unplug at least one piece of equipment. Wait 10 seconds, reset the circuit breaker by depressing the button, and then turn the UPS on. |
| The UPS does not perform expected runtime.                            | Battery not fully charged.   | Recharge the battery by leaving the UPS plugged in.   |
|   | Battery is worn out.   | Contact CyberPower Systems about replacement batteries at <a href="mailto:tech@cpsww.com">tech@cpsww.com</a>  |
| The UPS will not turn on.   | The on/off switch is designed to prevent damage from rapidly turning it off and on.  | Turn the UPS off. Wait 10 seconds and then turn the UPS on.   |
|   | The unit is not connected to an AC outlet.   | The unit must be connected to a 120V 60Hz outlet.   |
|   | The battery is worn out.   | Contact CyberPower Systems about replacement batteries at <a href="mailto:tech@cpsww.com">tech@cpsww.com</a>  |
|   | Mechanical problem.  | Contact CyberPower Systems at <a href="mailto:tech@cpsww.com">tech@cpsww.com</a>  |
| PowerPanel® Personal Edition is inactive (all icons are gray).        | The USB / serial cable is not connected.   | Connect the USB / serial cable to the UPS unit and an open USB / serial port on the back of the computer. You must use the cable that came with the unit.   |
|   | The USB / serial cable is connected to the wrong port.   | Check the back of the computer for an additional USB / serial port. Move the cable to this port.  |
|   | The unit is not providing battery power.   | Shutdown your computer and turn the UPS off. Wait 10 seconds and turn the UPS back on. This should reset the unit.  |
| The USB power ports are not providing power to the connected devices. | The USB power port has Over Current Protection design. When the total current of connected devices is over 2.1A, the USB power ports will stop providing power to the connected devices. | Turn the UPS off and unplug at least one piece of device connected to the USB power port and then turn the UPS on.  |

Additional troubleshooting information can be found under "Support" at [www.CPSww.com](http://www.CPSww.com)

## TECHNICAL SPECIFICATIONS

| Model   | BRG1350AVRLCD  | BRG1500AVRLCD         |
|---|--|-----------------------|
| Capacity  | 1350VA / 810W  | 1500VA / 900W         |
| Nominal Input Voltage   | 120V   |                       |
| Input Frequency   | 60 Hz ± 3 Hz   |                       |
| On-Battery Output Voltage                                     | 120Vac ± 5%  |                       |
| Max. Load for UPS Outlets (6 Outlets)                         | 1350VA / 810W  | 1500VA / 900W         |
| Max. Load for Full-Time Surge Protection outlets (12 Outlets) | 12 Amp   |                       |
| On-Battery Output Wave Form                                   | Simulated Sine Wave  |                       |
| Operating Temperature   | + 32°F to 104° F / 0° C to 40° C                               |                       |
| Operating Relative Humidity                                   | 0 to 90% non-condensing  |                       |
| Size (W x H x D)  | 3.9" x 11" x 14" (100 x 280 x 355 mm)                          |                       |
| Net Weight  | 24.5lbs / 11.1kg   | 25lbs / 11.3kg        |
| Battery Type  | CyberPower / RB1290X2  | CyberPower / RB1290X2 |
| Typical Battery Recharge Time                                 | 8 hours from total discharge                                   |                       |
| Typical Battery Life  | 3 to 6 years, depending on number of discharge/recharge cycles |                       |
| Recommended Battery   | Sealed Maintenance Free Lead Acid Battery                      |                       |
| Safety Approvals  | UL1778(UPS), cUL107., FCC/DoC Class B                          |                       |

### SYSTEM FUNCTIONAL BLOCK DIAGRAM



## CYBERPOWER GREENPOWER UPS™ TECHNOLOGY

### Advanced Energy-Saving Patented Bypass Technology

CyberPower's patented GreenPower UPS™ with Bypass Technology reduces UPS energy costs by up to 75% compared to conventional UPS models. Even when utility power is normal, conventional UPS models constantly pass power through a transformer. By contrast, under normal conditions the advanced circuitry of a GreenPower UPS™ bypasses the transformer. As a result, the power efficiency is significantly increased while decreasing waste heat, using less energy, and reducing energy costs.

When an abnormal power condition occurs, the GreenPower UPS™ automatically runs power through its transformer to regulate voltage and provide "safe" power. Since utility power is normal over 88% of the time, the GreenPower UPS™ operates primarily in its efficient bypass mode.

The GreenPower UPS™ is also manufactured in accordance with the Restriction on Hazardous Substances (RoHS) directive making it one of the most environmentally-friendly on the market today.



## Limited Warranty and Connected Equipment Guarantee

Read the following terms and conditions carefully before using the CyberPower BRG1350AVRLCD/BRG1500AVRLCD (the "Product").

By using the Product you consent to be bound by and become a party to the terms and conditions of this Limited Warranty and Connected Equipment Guarantee (together referred to as this "Warranty"). If you do not agree to the terms and conditions of this Warranty, you should return the Product for a full refund prior to using it.

### Who is Providing this Warranty?

CyberPower Systems (USA), Inc. ("CyberPower") provides this Limited Warranty.

### What Does This Warranty Cover?

This warranty covers defects in materials and workmanship in the Product under normal use and conditions. It also covers equipment that was connected to the Product and damaged because of the failure of the Product.

### What is the Period of Coverage?

This warranty covers the Product for five years and connected equipment for as long as you own the Product.

### Who is Covered?

This warranty only covers the original purchaser. Coverage ends if you sell or otherwise transfer the Product.

### How Do You Get Warranty Service?

- Before contacting CyberPower, identify Your Product model number, the Purchase Date, and each item of Connected Equipment (E.G. Computer tower, Computer Monitor, Ink Jet Printer, Cable Modem, etc).
- Visit our web site at <http://www.cpsww.com/support> or Call us at (877) 297-6937.
- If your product requires warranty service you must provide a copy of your dated purchase receipt or invoice.

### How Do You Open A Connected Equipment Claim?

- Call us at (877) 297-6937 or write to us at Cyber Power Systems (USA), Inc., 4241 12th Ave. E., STE 400, Shakopee, MN 55379, or send us an e-mail message at [claims@cpsww.com](mailto:claims@cpsww.com) for instructions, within 10 days of the occurrence.
- When you contact CyberPower, identify the Product, the Purchase Date, and the item(s) of Connected Equipment. Have information on all applicable insurance or other resources of recovery/payment that are available to the Initial Customer and Request a Claim Number.
- You must provide a dated purchase receipt (or other proof of the original purchase) and provide a description of the damage to your connected equipment.
- Pack and ship the product to CyberPower and, if requested, the item(s) of Connected Equipment, a repair cost estimate for the damage to the Connected Equipment, and all claim forms that CyberPower provides to you. Show the Claim Number on the shipping label or include it with the product. **You must prepay all shipping costs, you are responsible for packaging and shipment, and you must pay the cost of the repair estimate.**

### How Long Do I Have To Make A Claim?

All claims must be made within ten days of the occurrence.

### What Will We Do To Correct Problems?

CyberPower will inspect and examine the Product.

If the Product is defective in material or workmanship, CyberPower will repair or replace it at CyberPower's expense, or, if CyberPower is unable to or decides not to repair or replace the Product (if defective) within a reasonable time, CyberPower will refund to you the full purchase price you paid for the Product (purchase receipt showing price paid is required).

If it appears that our Product failed to protect any equipment plugged into it, we will also send you forms for making your claim for the connected equipment. We will repair or replace the equipment that was damaged because of the failure of our Product or pay you the fair market value (NOT REPLACEMENT COST) of the equipment at of the time of the damage. We will use Orion Blue Book, or another a third-party valuation guide, or eBay, craigslist, or other source to establish that amount. Our maximum liability is limited to \$500,000 for the BRG1350AVRLCD and BRG1500AVRLCD.

### Who Pays For Shipping?

We pay when we send items to you; you pay when you send items to us.

### What isn't covered by the warranty?

- This Warranty does not cover any software that was damaged or needs to be replaced due to the failure of the Product or any data that is lost as a result of the failure or the restoration of data or records, or the reinstallation of software.
- This Warranty does not cover or apply to: misuse, modification, operation or storage outside environmental limits of the Product or the equipment connected to it, nor for damage while in transit or in storage, nor if there has been improper operation or maintenance, or use with items not designed or intended for use with the Product, such as laser printers, appliances, aquariums, medical or life support devices, etc.

### What are the Limitations?

The sole and exclusive remedies of the Initial Customer are those provided by this Warranty.

- This Warranty does not apply unless the Product and the equipment that was connected to it were connected to properly wired and grounded outlets (including compliance with electrical and safety codes of the most current electrical code), without the use of any adapters or other connectors.
- The Product must have been plugged directly into the power source and the equipment connected to the Product must be directly connected to the Product and not "daisy-chained" together in serial fashion with any extension cords, another Product or device similar to the Product, surge suppressor, or power tap. Any such installation voids the Limited Warranty.
- The Product and equipment connected to it must have been used properly in a suitable and proper environment and in conformance with any license, instruction manual, or warnings provided with the Product and the equipment connected to it.
- The Product must have been used at all times within the limitations on the Product's VA capacity.

The Product was designed to eliminate disrupting and damaging effects of momentary (less than 1ms) voltage spikes or impulses from lightning or other power transients. If it can be shown that a voltage spike lasting longer than 1ms has occurred, the occurrence will be deemed outside the rated capabilities of the Product and the Limited Warranty is void. CyberPower Does Not Cover or Undertake Any Liability in Any Event for Any of the Following:

- Loss of or damage to data, records, or software or the restoration of data or records, or the reinstallation of software.
- Damage from causes other than AC Power Line Transients, spikes, or surges on properly installed, grounded and code-compliant 120 volt power lines in the United States and Canada; transients, surges or spikes on standard telephone land lines, PBX telephone equipment lines or Base 10T Ethernet lines, when properly installed and connected. (This exclusion applies, for example, to fluctuations in data transmission or reception, by CATV or RF transmission or fluctuations, or by transients in such transmission.)
- Damage from any circumstance described as excluded above with respect to the Product.
- Damages from fire, flood, wind, rain, rising water, leakage or breakage of plumbing, abuse, misuse or alteration of either the product or the Connected Equipment.
- CyberPower excludes any liability for personal injury under the Limited Warranty and Connected Equipment Guarantee. CyberPower excludes any liability for direct, indirect, special, incidental or consequential damages, whether for damage to or loss of property [EXCEPT FOR (AND ONLY FOR) the specific limited agreement of CyberPower to provide certain warranty benefits regarding "Connected Equipment" under this Warranty], loss of profits, business interruption, or loss of information or data. NOTE: Some States or Provinces do not allow the exclusion or limitation of incidental or consequential damages, so the above limitation may not apply to you.
- The Product is not for use in high-risk activities or with aquariums. The Product is not designed or intended for use in hazardous environments requiring fail-safe performance, or for use in any circumstance in which the failure of the Product could lead directly to death, personal injury, or severe physical or property damage, or that would affect operation or safety of any medical or life support device (collectively, "High Risk Activities"). CyberPower expressly disclaims any express or implied warranty of fitness for High Risk Activities or with aquariums. CyberPower does not authorize use of any Product in any High Risk Activities or with Aquariums. **ANY SUCH USE IS IMPROPER AND IS A MISUSE OF THE PRODUCT.**

### Where Can I Get More Information?

The application of the United Nations Convention of Contracts for the International Sale of Goods is expressly excluded.

CyberPower is the warrantor under this Limited Warranty.

For further information please feel free to contact CyberPower at CyberPower Systems (USA), Inc. 4241 12<sup>th</sup> Ave E., STE 400, Shakopee, MN 55379; call us at (877) 297-6937; or send us an e-mail message at [claims@cyberpowersystems.com](mailto:claims@cyberpowersystems.com).

CyberPower Systems encourages environmentally sound methods for disposal and recycling of its UPS products. Please dispose and/or recycle your UPS and batteries in accordance to the local regulations of your state.

All rights reserved. Reproduction without permission is prohibited.