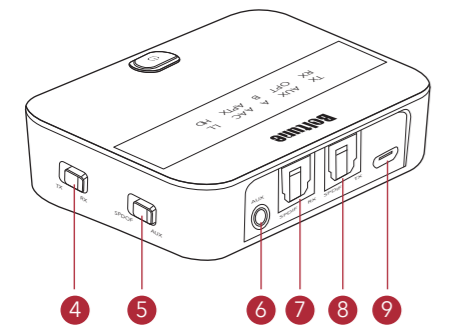
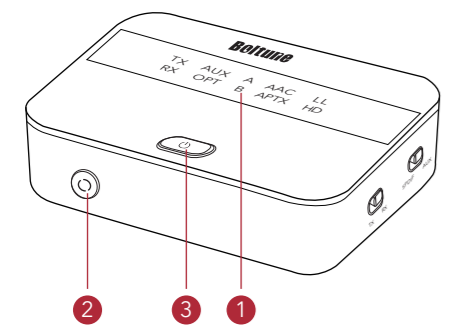


1 Product Diagram

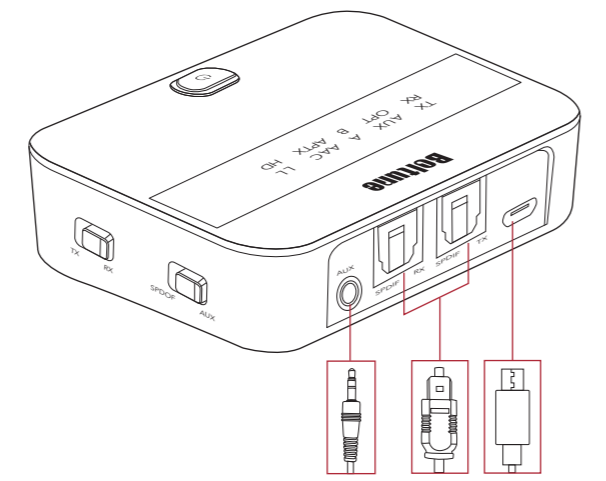


- 1 LED Indicators
- 2 Pair Button
- 3 Multifunction Button (Charging Indicator)
- 4 TX / RX Switch
- 5 Mode Switch
- 6 AUX Port
- 7 OPT Audio Output
- 8 OPT Audio Input
- 9 Micro USB Charging Port

2 Package Contents

- 1 x Boltune Bluetooth Adapter (BT-BA001)
- 1 x 3.5mm Audio Cable
- 1 x 3.5mm Female to RCA Male Cable
- 1 x USB Charging Cable
- 1 x Optical Cable
- 1 x User Guide

3 Cable Connection



4 Button Control

Button	Operation and Function
Multifunction Button	Press and hold for 2 seconds to turn on / off the unit
	Tap once to play / pause music in RX mode
	Tap and hold it and plug in the charging cable at the same time to restore to factory settings
Pair Button	When the device is on, press and hold for 7 seconds to turn on / off the HD mode
	When the device is on, press once to enter pairing mode
TX / RX Switch	Toggle it to set the adapter to transmitter / receiver mode
Mode Switch	Toggle to set the adapter to AUX / SPDIF mode

5 How to Use

Charging

1. Connect the Micro USB charging port with any active USB port via the included charging cable, charging will start automatically.
2. The charging indicator will stay solid red during charging and turn off once charging is completed.

- ! You can use the adapter while it is being charged. There might be current sound if the battery level or quality is low.
- ! It is recommended to fully charge the adapter when using it for the first time or before putting it away for storage.
- ! Charge the adapter at least once every 3 months when not using for a long time.

6 Pairing in TX Mode

1. Toggle the TX / RX Switch to TX position. Connect the adapter to your non-Bluetooth audio transmitting device.
2. Place your Bluetooth audio receiving device like earphones / speakers within 1 meter / 3 feet range and set it to pairing mode.
3. Press and hold the Multifunction Button to turn on the adapter and press the Pair Button once to enter pairing mode. The TX indicator will flash fast blue. After approximately 10 seconds, pairing will be completed with the TX indicator staying solid blue.

- ! The adapter is unable to pair with audio transmitting devices e.g. smartphone in TX mode.
- ! In TX mode, press and hold the Multifunction Button for 7 seconds to clear the pairing history.

7 Pairing in RX Mode

1. Toggle the TX / RX Switch to RX position. Connect the adapter to your non-Bluetooth audio receiving device.
2. Press and hold the Multifunction Button to turn on the adapter and press the Pair Button once to enter pairing mode. The RX indicator will flash fast blue.
3. Activate the Bluetooth function on your transmitting device (phone / tablet) and search for nearby Bluetooth connections.
4. Find "Boltune BT-BA001" in the search results, tap on the name to connect. Once connected, the RX indicator will stay solid blue.

- ! The adapter will try to re-pair the last connected device when turned on.

8 Pairing with Two Devices at One Time

In TX Mode

- In TX mode, the adapter is able to pair with two pairs of Bluetooth stereo earphones / speakers at the same time.
1. Pair the adapter with the first audio receiving device as instructed above.
 2. Set the second audio receiving device into pairing mode. Press the Pair Button to bring the adapter into pairing mode again. Connection will be completed after approximately 30 seconds.

- ! Please make sure there are no other Bluetooth devices within range during the connection.
- ! When paired with two devices, both can play music at the same time (except in HD mode).

In RX Mode

- In RX mode, the adapter is able to pair with two Bluetooth devices like phones and tablets at the same time.
1. Pair the adapter with your first device as previously instructed.
 2. Press the Pair Button to bring the adapter into pairing mode again. Pair the second device with it as instructed above.

- ! When paired with two devices in RX mode, only one device can play music.

9 Auto Shut Off

- ! In TX mode, the unit will shut off automatically if the battery level is low.
- ! In RX mode, the unit will shut off automatically if the battery level is low or there is no connection in 10 minutes.