

## IMPORTANT INFORMATION

- Always clean the nozzle on the lip gloss dispenser after use. Twist off to remove and wash with a damp towel and water only.
- Do not apply lip gloss, flavoring or sprinkles around eyes. In case of contact with eyes, rinse immediately with plenty of water and seek medical advice.
- Store lip gloss and ingredients in a cool, dry environment.
- Use under adult supervision.
- Discard lip gloss after use.
- Thoroughly rise out and dry each lip gloss container after it as been used up.
- After using the mixing cup, rinse it out and lay flat to air dry.
- Always replace the lid on the gloss and the caps on the flavorings after use.
- Ingredients may cause irritation. In case of irritation, rinse immediately with water and discontinue use.
- Do not swallow the lip gloss, flavoring or glitter. If swallowed, wash out mouth with water, drink fresh water and seek medical advice.

## INGREDIENTS

### LIP GLOSS (BASE):

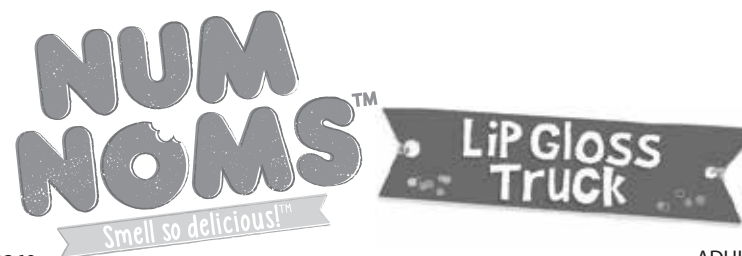
PARAFFINUM LIQUIDUM, POLYBUTENE, ETHYLHEXYL PALMITATE, EUPHORBIA CERIFERA CERA, CERA MICROCISTALLINA, GLYCERYL CAPRYLATE, TOCOPHERYL ACETATE

### LIP GLOSS (FLAVOR):

POLYBUTENE, PARAFFINUM LIQUIDUM, ETHYLHEXYL PALMITATE, SYNTHETIC BEESWAX, PARFUM, GLYCERYL CAPRYLATE, D&C RED NO.27, YELLOW NO. 5, RED 7 LAKE, FD&C YELLOW NO. 6, ALUMINUM LAKE

### GLITTER SPRINKLES:

POLYETHYLENE TEREPHTHALATE, ACRYLATES COPOLYMER



**WARNING:**  
CHOKING HAZARD—Small parts.  
Not for children under 3 years.

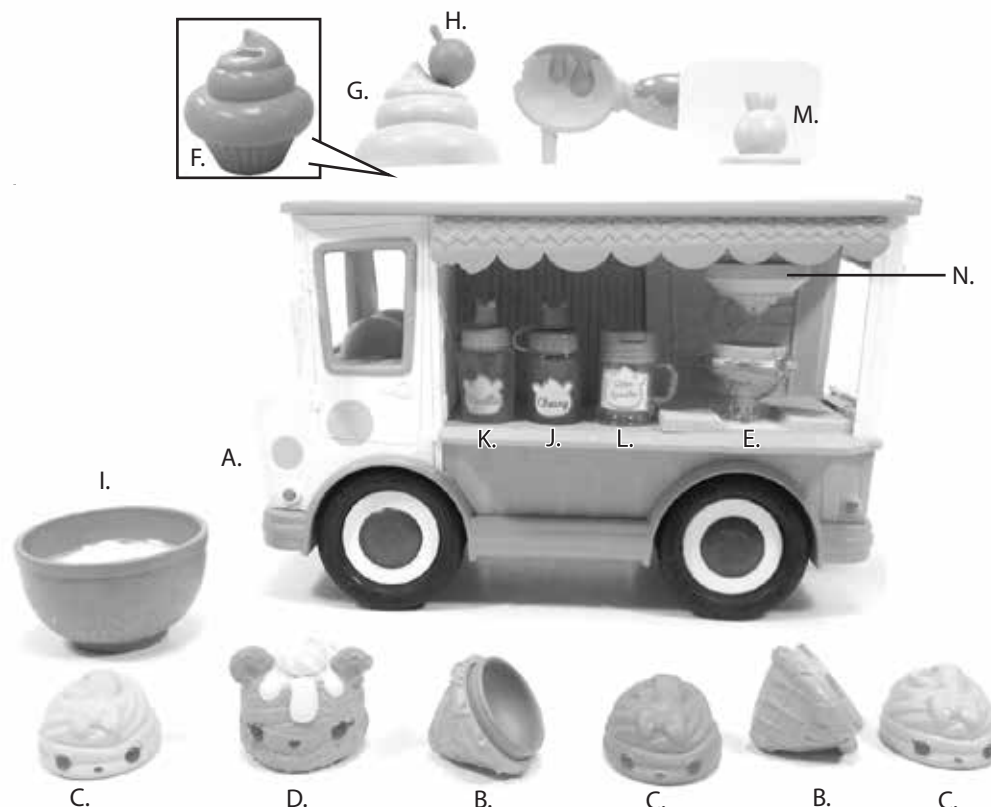
AGE 3+ YEARS

ADULT SUPERVISION REQUIRED

542360

## CONTENTS

- |                             |                                      |                        |
|-----------------------------|--------------------------------------|------------------------|
| A. 1 Num Noms™ Truck        | F. 1 Mixing Cup                      | J. 1 Cherry Flavoring  |
| B. 2 Cone Lip Gloss Holders | G. 1 Mixing Cup Swirl Top            | K. 1 Vanilla Flavoring |
| C. 3 Nom Lip Gloss Tops     | H. 1 Mixing Spatula                  | L. 1 Glitter Sprinkles |
| D. 1 Num                    | I. 1 Container of Lip Gloss with Lid | M. 1 Plunger           |
| E. 1 Cup Lip Gloss Holder   |                                      | N. 1 Nozzle            |



Please keep this manual as it contains important information.



0316-0-E/INT

www.numnoms.com  
© 2016 MGA Entertainment, Inc.  
NUM NOMS™ is a trademark of MGA in the U.S. and other countries. All logos, names, characters, likenesses, images, slogans, and packaging appearance are the property of MGA.

16300 Roscoe Blvd.  
Van Nuys, CA 91406 U.S.A.  
(800) 222-4685

Printed in China

MGA Entertainment UK Ltd.  
50 Presley Way  
Crownhill  
Milton Keynes, MK8 0ES  
Bucks, UK  
+ 0800 521 558

Visit [www.mgae.com](http://www.mgae.com)  
to register your product  
and to enter our sweepstakes  
(No purchase necessary)

The preferred method of contact for  
Customer Service is through our e-mail  
contact form at [www.mgae.com](http://www.mgae.com)

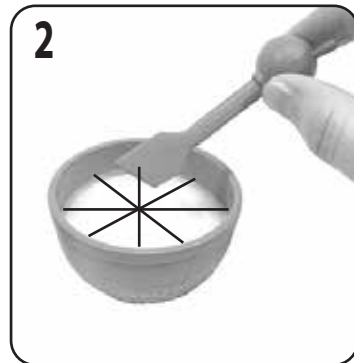
Illustrations are for reference only. Styles may vary from actual contents.

## QUICK START

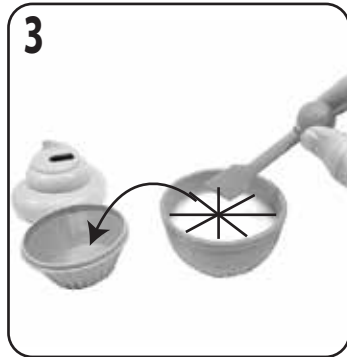
IMPORTANT: Before beginning, cover the play area to protect it from possible damage.



1 Remove the mixing cup, swirl top and spatula from the top of the truck.



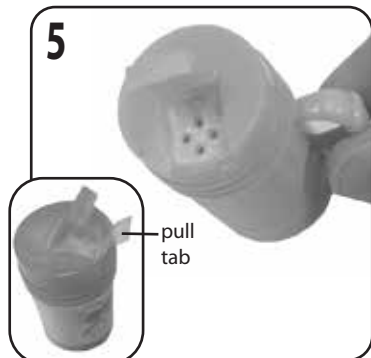
2 Remove the lid and seal from the lip gloss container. Divide the gloss into eight equal slices.



3 Using the spatula, remove one slice and place it into the mixing cup.



4 Open the cap of a flavoring and remove the seal. Replace the cap and add 10 drops to the lip gloss. Stir until thoroughly combined.



5 Add a few dashes of glitter sprinkles too! Open the flip top on the cap and remove the pull tab seals. Use the sifter side to sprinkle glitter into the lip gloss and stir the mixture until it is combined.



6 Remove the nom lip gloss top from a lip gloss holder. Then, place the holder under the dispenser.



7 Remove the plunger from the top of the dispenser. Scoop your lip gloss mixture into the opening.



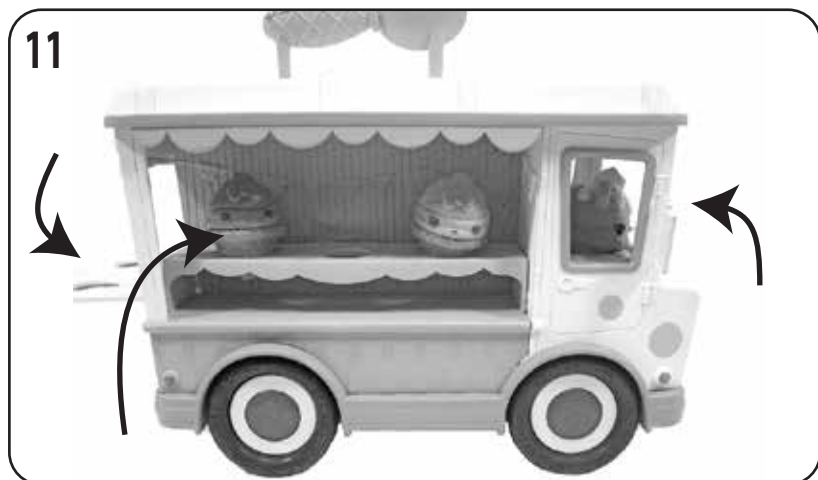
8 Press the plunger down to dispense the gloss into the holder.



9 Cover the lip gloss holder with a Nom lip gloss top to store your lip gloss.



10 Stack a Num on top of your Nom!



11 Serve and store your lip gloss holders, Nom lip gloss tops and your Num on the truck and take them for a ride!