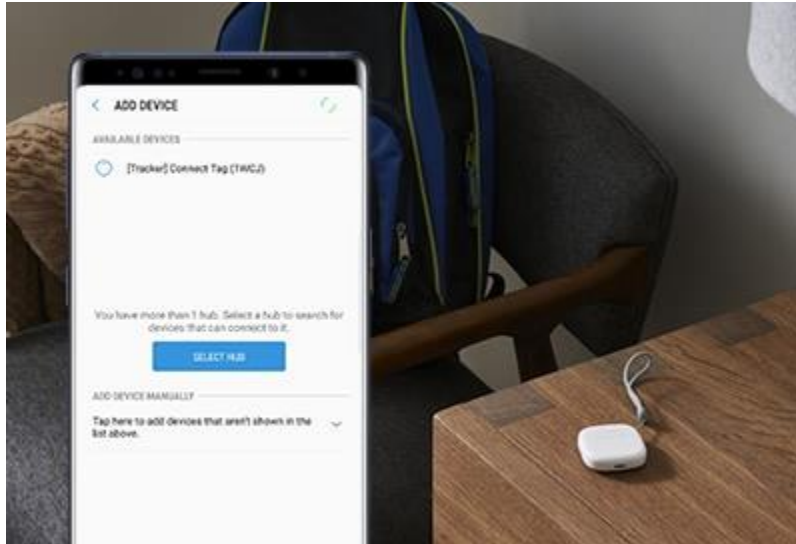


Set Up and Connect a Tracker



Maybe you always forget where you parked your car. Or, maybe you worry about an elderly relative. If that's the case, you should set up your SmartThings tracker. Once you connect it to your phone and the SmartThings app, you can keep tabs on everything and everyone. You can also reset it or delete the tracker at any time.

Connect Your Tracker to Your Phone


To keep track of people or items, your SmartThings tracker uses advanced technology. But don't worry, setting it up is simple. Follow these steps to connect the tracker to your phone and your SmartThings account.

Navigate to the Samsung Gold and then open **SmartThings**. Touch the **Devices** tab and then touch **ADD DEVICE**. Touch your desired tracker from the list of available devices. If your tracker does not automatically appear, touch **ADD DEVICE MANUALLY** and then touch **Tracker**. Next, choose your desired location, and then touch **Next**. Follow the on-screen instructions to connect the tracker.

Once it's connected, you can [create custom automation](#) using the tracker and set locations.

< ADD DEVICE

AVAILABLE DEVICES

 [Tracker] Connect Tag (1WCJ)

You have more than 1 hub. Select a hub to search for devices that can connect to it