

ProCabinet™

Owner's Manual

model number

CB400u

(Fits RT400/450/500 Routertops)

This upgraded cabinet base is designed for use with Model RT400, 450, and 500 routertops. This cabinet uses Euro hinges, and is predrilled for the optional two drawer unit shown in the photo below (not included).

This carton contains all the necessary hardware to assemble the cabinet. **The hardware needed to attach the routertop comes with the routertop. This includes cross dowels and through bolts.**

Please, take the time now to read these instructions, as it will make assembly much easier.

Thank you for choosing Bench Dog, Inc.



CB400u shown with optional RT400 ProTop, AF400 ProFence, and DB400 drawer bank option



BENCH DOG, INC.

3310 5th St. NE
Suite 100
Minneapolis, MN 55418

612.782.8205 main
612.788.2518 fax
800.786.8902 toll free
benchdog@benchdog.com
www.benchdog.com

Contents of Box

Hardware

- 32 1/4-20" x 50 mm round head bolts (2 extra)
- 32 1/4-20" cross dowels (2 extra)
- 2 nylon handles
- 4 #8 x 1" handle screws
- 2 Euro hinge sets- includes (4) hinges and (4) plates
- 2 door stops with screws, #8 x 3/4"

Cabinet Panels

- 1 left side panel
- 1 back panel
- 1 right side panel with cord cut-out
- 1 upper shelf panel
- 1 lower shelf panel
- 1 left door
- 1 right door (with Bench Dog decal)
- 1 long support with (2) center through-holes
- 1 long support without through-holes
- 1 short support

Tools Required

- 4 mm Allen wrench
- phillips screwdriver

Symbols



Warning



Important

Read and understand the entire contents of this manual before attempting assembly or use of this product. Inspect contents for shipping damage and shortages. Report problems directly to Bench Dog, Inc.

QUESTIONS?

1-800-786-8902

Be sure to check out our web site for all the latest and greatest accessories and tools.

www.benchdog.com

General Conditions / Limited Two Year Warranty

We make every effort to assure that our products meet quality and durability standards, and warrant to the original retail purchaser that this product is free from defects in materials and workmanship for two years. Remedy shall be limited to Bench Dog's choice of repair, replacement or refund. This warranty does not provide remedy for consequential economic loss.

This is a limited two year warranty. It requires the purchaser to contact Bench Dog in writing within 30 days of discovering the defect. Warranty does not apply to defects due directly or indirectly to misuse, abuse, negligence or accidents, repairs or alterations, or due to lack of maintenance. It excludes components and parts not manufactured by Bench Dog, defects caused by failure to provide a suitable installation environment, and damage caused by use for purposes other than those for which the product was designed.

Bench Dog, Inc. reserves the right to make product changes without notice and without obligation to make these changes on products previously sold.

Important Safety Points

Before operating your router table and cabinet please read this manual thoroughly. Retain it for future reference. Refer to your router owner's manual for safety instructions regarding use of that tool. This manual is not an instruction book on how to do woodworking with a power tool. Bench Dog encourages all woodworkers to continually seek improvement in their woodworking skills, regardless of their craftsmanship or years of experience. The router table, fence, cabinet, and accessories must only be used for their intended purpose: woodworking via normal routing operations. "Normal operations" means basic shaping of wood in conditions where grounded electricity, sharp tools, dust, and rapidly spinning parts can be used or encountered safely. The following instructions elaborate on this concept.

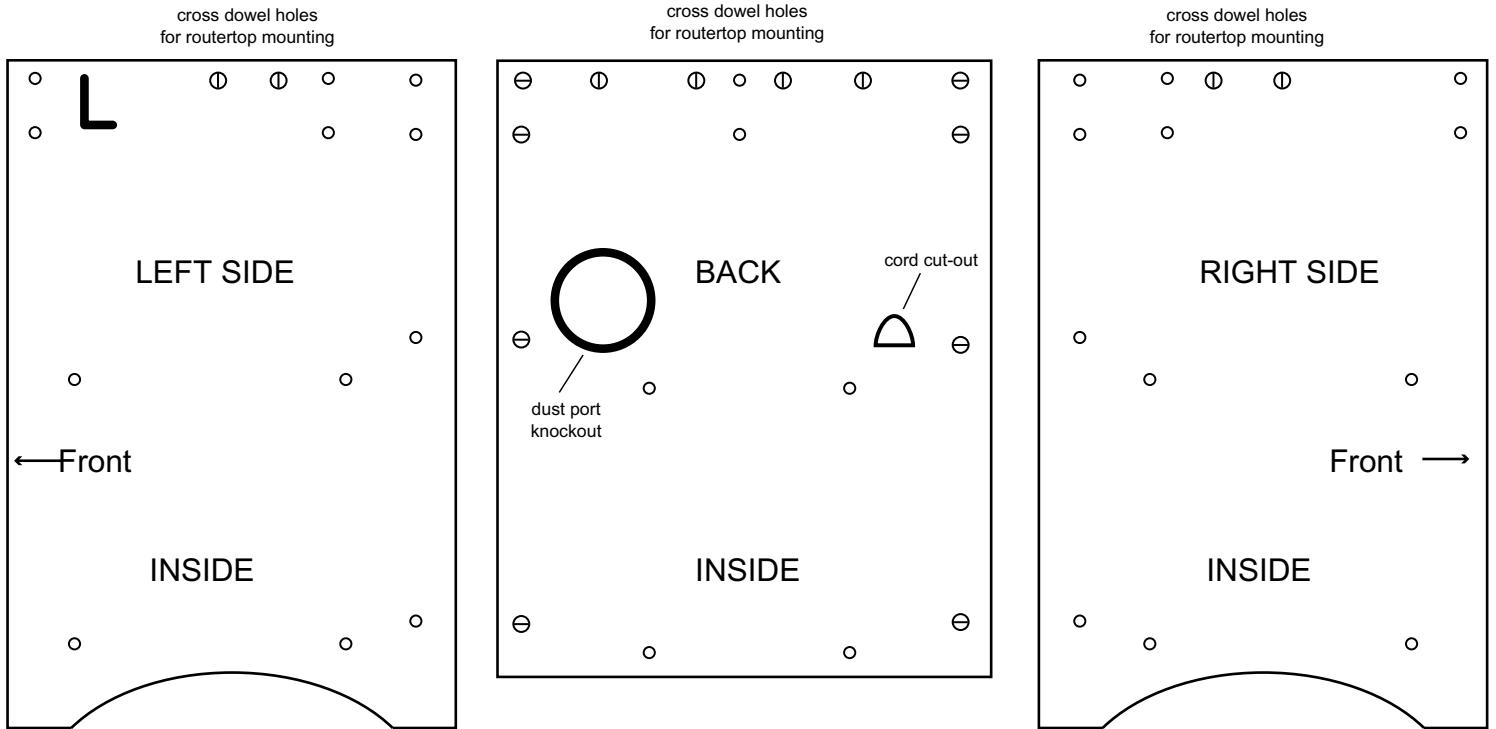
1. Do not use your router table or cabinet as a step or seat.
2. The top and cabinet must be properly secured, and be level before use. Inspect your table and base for damage and levelness prior to each use.
3. Keep work area clean, dry and well lit.
4. The hardware affixing the insert to the routertop must be installed for safe use. Tighten insert hold-down screws before each use.
5. Safe operation requires a router table fence, bit guard, dust collection system, starting pin or fulcrum, and speed reducer for large diameter bits. We recommend reducing router speed for 1" or larger diameter bits. Consult your bit manufacturer for the exact speed.
6. Use the right tool for the job. Do not force a tool or attachment to do a job for which it was not designed.
7. Secure your work with a featherboard, clamps, or a vice when appropriate. The use of inappropriate accessories may cause injury.
8. Wear safety glasses, dust mask, face shield and ear protection. This is not an exhaustive list. Daily wear eye glasses do not substitute for safety glasses.
9. Do not wear gloves or jewelry while using a power tool.
10. Maintain your equipment and its accessories in good working condition. Look for wear, poor alignment of moving parts, binding of moving parts, breakage, poor mounting, or other conditions that may affect operation and safety. Repair or replace any damaged parts.
11. Disconnect the power before moving, adjusting, or repairing parts, or otherwise maintaining your router table and any accessories you may be using.
12. Keep children, pets, and those who may disregard safety away from work area, cords, sockets and tools.
13. Wear snug fitting clothes and keep long hair back to avoid catching in moving parts.
14. Do not overreach. Maintain balanced footing and stance.
15. Stay alert. Use common sense.

In any correspondence with Bench Dog, Inc., please refer to the date and place of purchase. You may reach us at Bench Dog, Inc., 3310 5th St. NE, Suite 100, Mpls., MN 55413 USA, (612) 782-8205 or 1-800-786-8902. On the internet, you may reach us at www.benchdog.com.

Cabinet Panel Detail

- ⊕ = Cross Dowel Hole
- = Bolt Thru Hole

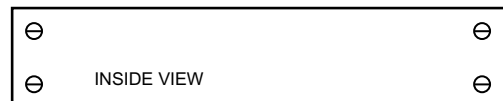
All cross dowels holes are located on the inside of the cabinet!



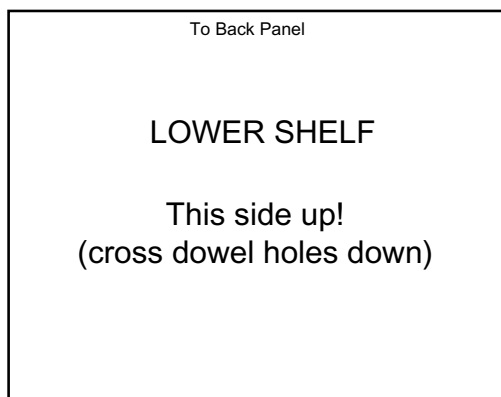
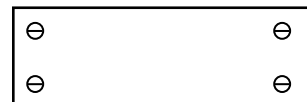
LONG SUPPORT WITH THROUGH-HOLES



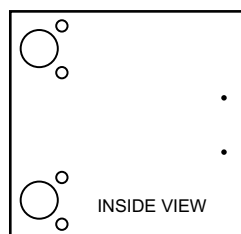
LONG SUPPORT WITHOUT THROUGH-HOLES



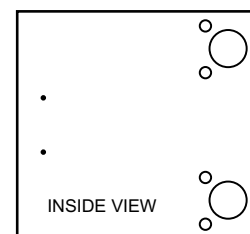
SHORT SUPPORT



RIGHT DOOR



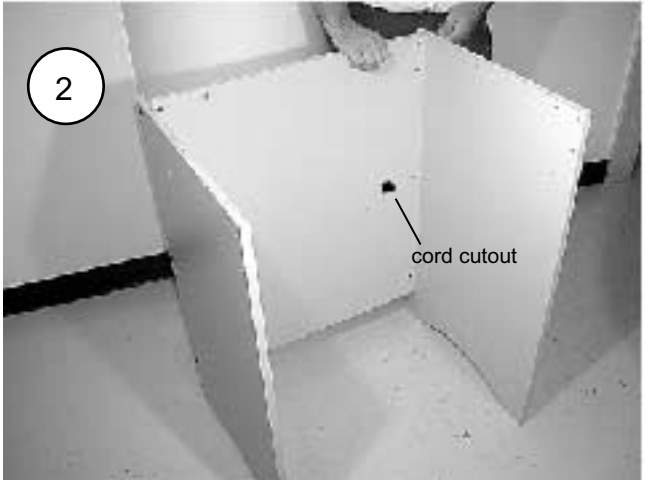
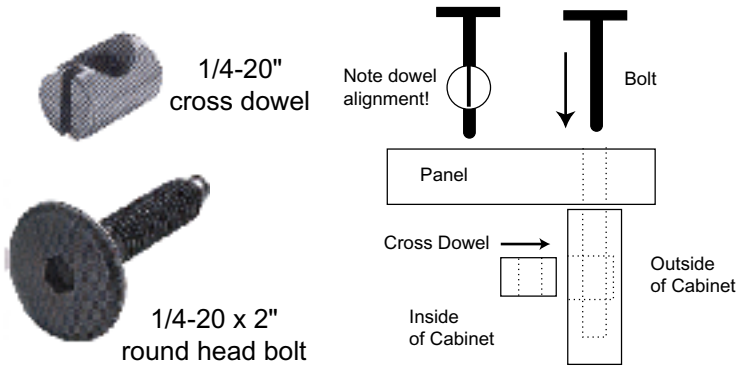
LEFT DOOR



Assembly Instructions

1. Attach the left side panel to the back panel.

Use (4) 1/4-20 x 2" round head bolts and cross dowels, and your 4mm wrench to lightly tighten the bolts. The drawing below shows how these fasteners fit together. Note: The cross dowel holes for mounting the routertop are located on the top inside of the cabinet panels.



2. Attach the right side panel to the back panel.

Use (4) 1/4-20 x 2" round head bolts and cross dowels. Note: the back panel has the power cord cut-out.



All panels forming the routertop mating surface must be flush at the top.



Do not fully tighten bolts until the cabinet is completely assembled.

3. Turn the cabinet upside down.

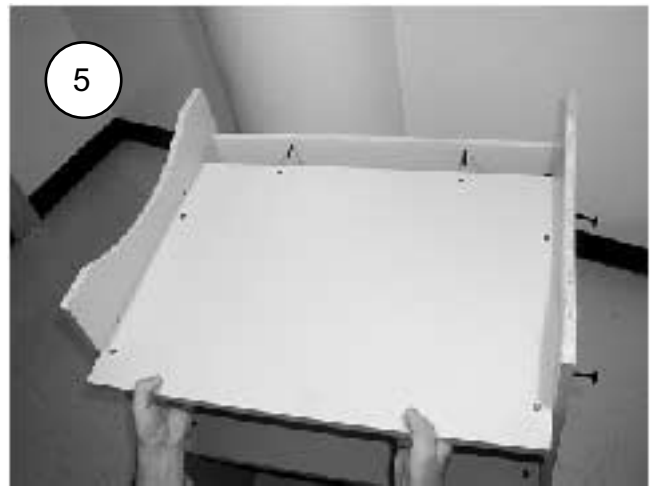
This makes the following steps much easier.

4. Attach the upper shelf.

Preinstall the cross dowels into their holes. The cross dowel holes face up, and the two small door stop holes face down. (Hint: Install (2) round head bolts into the back panel. As you slide the shelf into position, aim for these bolts, as they will temporarily hold the panel in position as you install the remaining bolts.) Note: The upper shelf is positioned in the middle of the cabinet, not at the top of the cabinet.

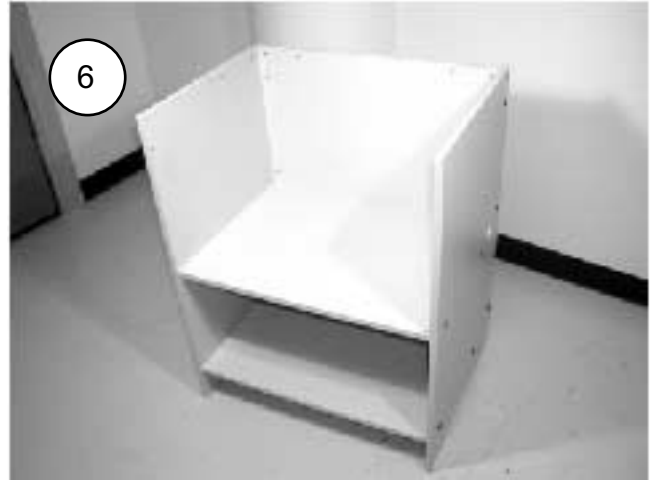
5. Attach the lower shelf.

See step four if you're unclear.



6. Right the cabinet.

You're almost done!

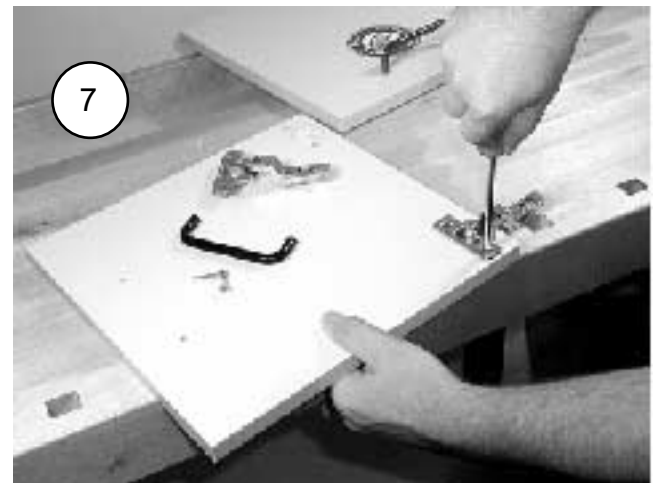


7. Attach the hinges and handles to the doors.

Press the hinge cups into their bores. Turn the integral hinge cams to tighten, as shown in the photo. The (2) nylon handles attach with the (4) #8 x 1" screws.



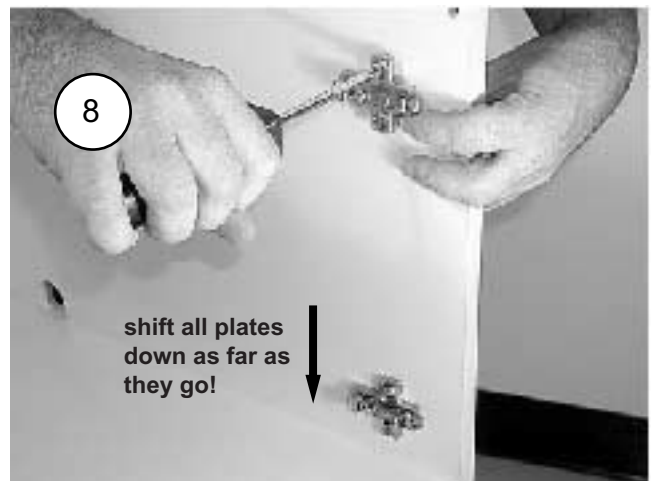
#8 x 1" screw
for handle



8. Attach the (4) hinge mounting plates to the side panels.

Note the orientation of the plates in the photo. The plate resembles the letter "t". Position the top of the "t" nearest the front edge of the side panel as shown.

Very Important! During installation shift all the hinge plates down as far as they go. Tighten the plate screws securely, but do not overtighten!



9. Attach the (2) plastic door stops to the upper shelf.
Use the (2) small #8 x 3/4" pan head screws.



#8 x 3/4" pan
head screw



STOP!

Steps 10 - 12 apply to RT400 routertops only!
(skip to steps 13 - 15 for RT450 and RT500 routertops)

10. Attach the rear support.

Use the long support with the center through-holes and (4) 1/4-20 x 2" round head bolts and cross dowels.



11. Attach the front support .

Use (4) 1/4-20 x 2" round head bolts and cross dowels.



12. Plug the unused holes, if desired.

To plug the holes you must first cut 1.75" off one end of the unused short support. Then, simply bolt the cut-off to the cabinet using (2) bolts and cross dowels.

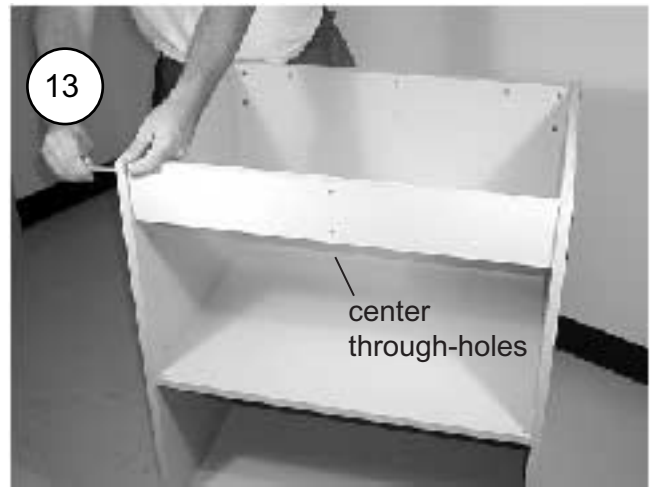


GO TO STEP 16.

Steps 13 - 15 apply to RT450/500 routertops only!
 (go back to steps 10 - 12 for RT400 routertops)

13. Attach the front support.

Use the long support with center through-holes and (4) 1/4-20 x 2" round head bolts and cross dowels.



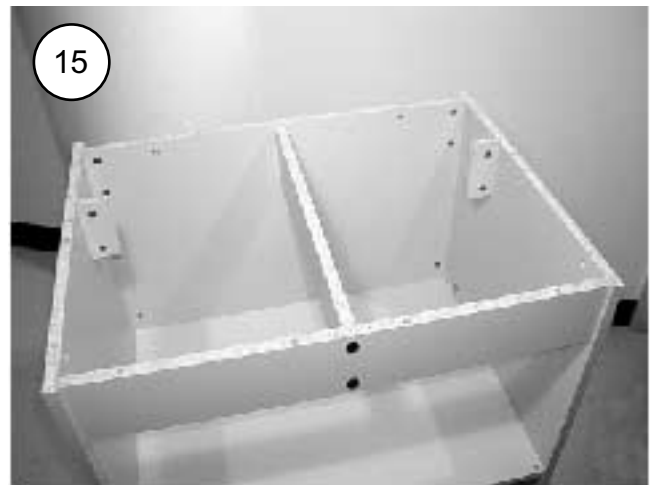
14. Attach the middle support.

Use the short support and (4) 1/4-20 x 2" round head bolts and cross dowels.



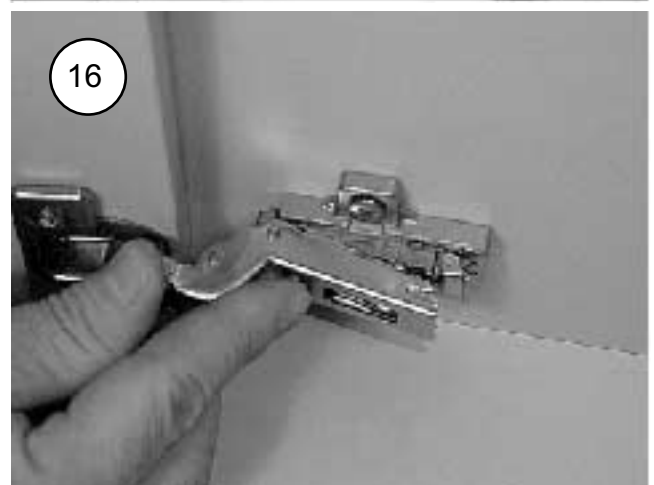
15. Plug the unused holes, if desired.

To plug the holes you must first cut 1.75" off both ends of the unused long support. Then, simply bolt the cut-offs to the cabinet using (4) bolts and cross dowels.



16. Clip on the doors.

If your hinges need adjustment, see below. Please, take your time to learn how the hinges clip on and off.



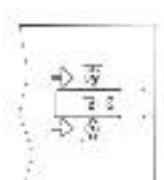
**Frontal
Adjustment
Screw**



**Lateral
Adjustment
Screw**



**Vertical
Adjustment
Screws**



**Don't force the hinges onto
the mounting plates!**

17. Tighten all bolts.

Tighten the bolts before attaching the routertop. Additionally, the bolts will need periodic tightening after using the table.

For mounting the routertop, use the instructions that come with the top.

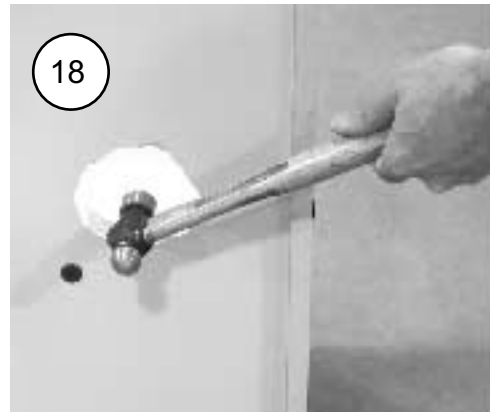


I Important! Dust Collection

If you intend to keep the cabinet doors closed, you must install an aftermarket 6" dust port. A 6" dust port (universal flanges) are widely available. We have provided a location and knockout for your convenience (see Step 18).

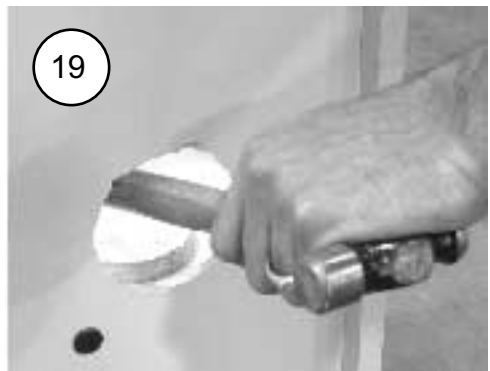
18. Remove knockout.

Remove the knockout from the back of the cabinet using a hammer. Strike toward the inside of the cabinet to avoid breakage of the laminate.



19. Remove excess material from hole.

Remove any excess material around the dust port hole.



20. Attach the dust port.

Position your 6" dust port over the hole and attach it using 4 screws.



Drawer Bank Option

Add a drawer bank to your CB400u cabinet with our Drawer Bank Option. The drawer bank is constructed of premium grade metal components, and the drawer fronts match your cabinet. **Model DB400.**

Door Set

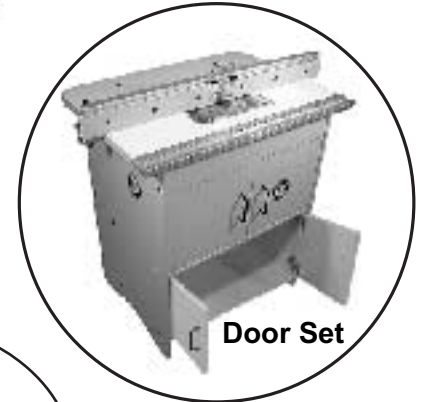
A set of two doors can be added to the cabinet. Includes hinges, pull handles, door stops and screws. **Model DS400.**

Cab-Loc Mobile Leveling System

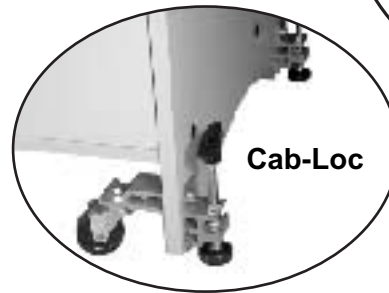
Bench Dog has its own leg leveler and mobile base combination! Call us or see your retailer for more information. **Model CL400.**



DB400 Drawer Bank Option



Door Set



Cab-Loc

Your own leg levelers can be added, however, make sure they are the bracket style that attach to the side of the cabinet panels. **DO NOT USE LEVELERS THAT REQUIRE DRILLING INTO THE BOTTOM OF THE END PANELS.** An example of this incorrect leveler is the stud and t-nut style leg leveler. This will weaken the panels. **Dragging your cabinet on the floor will cause serious damage to the integrity of the cabinet. Lift and place your cabinet where you need it. Such damage will not be covered under the warranty.**

Bit storage can be devised in many different ways, ranging from pull out bit shelves to holes drilled in wood and simply placed within the cabinet. Our new drawer options are perfect for storing your router bits, wrenches, and collets.



BENCH DOG, INC.

3310 5th St. NE
Suite 100
Minneapolis, MN 55418

612.782.8205 main
612.788.2518 fax
800.786.8902 toll free
benchdog@benchdog.com
www.benchdog.com

QUESTIONS?

1-800-786-8902

Be sure to check out our web site for all the latest and greatest accessories and tools.

www.benchdog.com