

INSTALL/REMOVAL INSTRUCTIONS: WINDOW LIFT MOTOR

ATTENTION: Refer to the appropriate shop manual for your vehicle to obtain specific service procedures for this part. If you do not have a service manual or lack the skill to install this part, it is recommended that you seek the services of a qualified technician. Pay special attention to all cautions and warnings included in the shop manual. Read and follow all instructions carefully.

REMOVAL/INSTALL OF WINDOW LIFT MOTOR (742-119) Chevrolet Venture 1997–2005, Chevrolet Montana 1999–2005, Oldsmobile Silhouette 1997–2004, Pontiac Trans Sport 1997–98

General Tech Tips:

- Use painter's tape rather than duct tape to secure window. It will not damage paint or leave sticky residue.
- A plastic pry tool is useful. It will not easily damage delicate trim like a screwdriver or metal pry bar.
- The replacement regulator should have a liberal amount of grease on slide area. If there is not much grease present, white lithium grease works well to lubricate the slide area.
- Aftermarket window tinting can cause the window to travel slower and put additional strain on the window regulator assembly.
- Window run channels should be cleaned and lubricated before installation of a new window regulator assembly. Silicone spray works well.

Tools required for removal and installation of window regulator and motor assembly:

- Silicone spray lubricant
- Trim panel removal tool
- Pick
- Saddle cup assembly, tape or wedge to hold window in place
- Flat-blade screwdriver or plastic pry tool
- 10 mm socket or driver
- Phillips screwdriver
- Door module coil spring tool (GM # J38864)
- Grease pencil or marker

PLEASE WEAR SAFETY GLASSES!



Disclaimer:

Even though every attempt is made to ensure this information is complete and accurate, it is impossible to account for all possible circumstances or situations. Please consult with a qualified auto technician before attempting to perform any work you are not qualified to do. Automobiles can be hazardous to work on; be sure to take all necessary safety precautions. Failure to do so may result in property damage or personal injury. Certain motor vehicle standards and performance requirements may apply to your motor vehicle (such as Federal Motor Vehicle Safety Standards by the National Highway Traffic Safety Administration). Be sure that your work is performed in accordance with such standards and that you do not disable any motor vehicle safety feature.

©2011 Dorman Products, Inc.

No reproductions in whole or in part without prior written approval.

INSTALL/REMOVAL INSTRUCTIONS: WINDOW LIFT MOTOR

ATTENTION: Refer to the appropriate shop manual for your vehicle to obtain specific service procedures for this part. If you do not have a service manual or lack the skill to install this part, it is recommended that you seek the services of a qualified technician. Pay special attention to all cautions and warnings included in the shop manual. Read and follow all instructions carefully.

Removal Instructions

CAUTION: DO NOT ATTEMPT TO REMOVE THE WINDOW LIFT MOTOR WITHOUT RELEASING THE COUNTER BALANCE (COIL SPRING) SPRING TENSIONER. THE WINDOW REGULATOR IS UNDER A LARGE AMOUNT OF TENSION FROM THE COUNTER BALANCE SPRING TENSIONER. FAILURE TO RELEASE THE TENSION CAN RESULT IN PERSONAL INJURY AND ALSO PROPERTY DAMAGE.

STEP 1: Remove screws from the interior door trim panel.



STEP 2: Remove the master switch assembly by using either your plastic pry tool or a flat-blade screwdriver.



Disclaimer:

Even though every attempt is made to ensure this information is complete and accurate, it is impossible to account for all possible circumstances or situations. Please consult with a qualified auto technician before attempting to perform any work you are not qualified to do. Automobiles can be hazardous to work on; be sure to take all necessary safety precautions. Failure to do so may result in property damage or personal injury. Certain motor vehicle standards and performance requirements may apply to your motor vehicle (such as Federal Motor Vehicle Safety Standards by the National Highway Traffic Safety Administration). Be sure that your work is performed in accordance with such standards and that you do not disable any motor vehicle safety feature.

©2011 Dorman Products, Inc.

No reproductions in whole or in part without prior written approval.

INSTALL/REMOVAL INSTRUCTIONS: WINDOW LIFT MOTOR

ATTENTION: Refer to the appropriate shop manual for your vehicle to obtain specific service procedures for this part. If you do not have a service manual or lack the skill to install this part, it is recommended that you seek the services of a qualified technician. Pay special attention to all cautions and warnings included in the shop manual. Read and follow all instructions carefully.

STEP 3: Using your door trim panel removal tool, release the door trim panel retainers from the door.



STEP 3a: Using either the saddle cup assembly, tape, or wedge, attach to the door glass to prevent the glass from falling.

STEP 4: Remove the water shield barrier from the door.



Disclaimer:

Even though every attempt is made to ensure this information is complete and accurate, it is impossible to account for all possible circumstances or situations. Please consult with a qualified auto technician before attempting to perform any work you are not qualified to do. Automobiles can be hazardous to work on; be sure to take all necessary safety precautions. Failure to do so may result in property damage or personal injury. Certain motor vehicle standards and performance requirements may apply to your motor vehicle (such as Federal Motor Vehicle Safety Standards by the National Highway Traffic Safety Administration). Be sure that your work is performed in accordance with such standards and that you do not disable any motor vehicle safety feature.

©2011 Dorman Products, Inc.

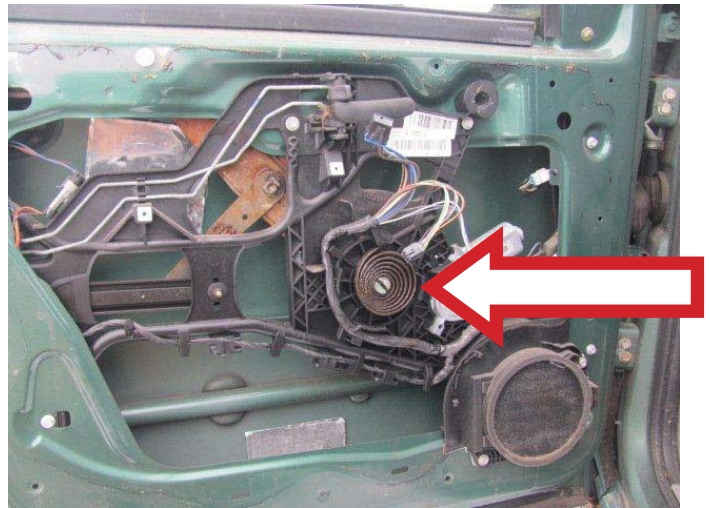
No reproductions in whole or in part without prior written approval.

INSTALL/REMOVAL INSTRUCTIONS: WINDOW LIFT MOTOR

ATTENTION: Refer to the appropriate shop manual for your vehicle to obtain specific service procedures for this part. If you do not have a service manual or lack the skill to install this part, it is recommended that you seek the services of a qualified technician. Pay special attention to all cautions and warnings included in the shop manual. Read and follow all instructions carefully.

IMPORTANT: Using your grease pencil or marker, draw a line across the counterbalance spring tensioner through the center to help with the alignment during the installation process.

STEP 5: Using the GM door module coil spring tool #J38864, release the tension from the counterbalance spring tensioner. Failure to do so could result in personal injury and property damage.



STEP 6: Disconnect the electrical connector at the window lift motor.



Disclaimer:

Even though every attempt is made to ensure this information is complete and accurate, it is impossible to account for all possible circumstances or situations. Please consult with a qualified auto technician before attempting to perform any work you are not qualified to do. Automobiles can be hazardous to work on; be sure to take all necessary safety precautions. Failure to do so may result in property damage or personal injury. Certain motor vehicle standards and performance requirements may apply to your motor vehicle (such as Federal Motor Vehicle Safety Standards by the National Highway Traffic Safety Administration). Be sure that your work is performed in accordance with such standards and that you do not disable any motor vehicle safety feature.

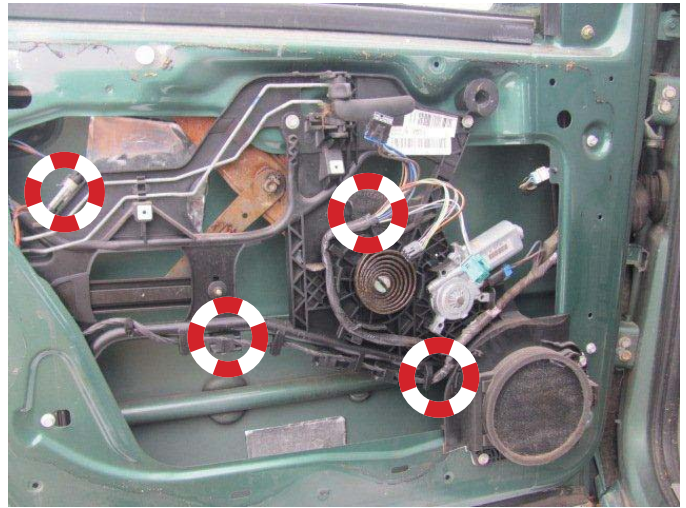
©2011 Dorman Products, Inc.

No reproductions in whole or in part without prior written approval.

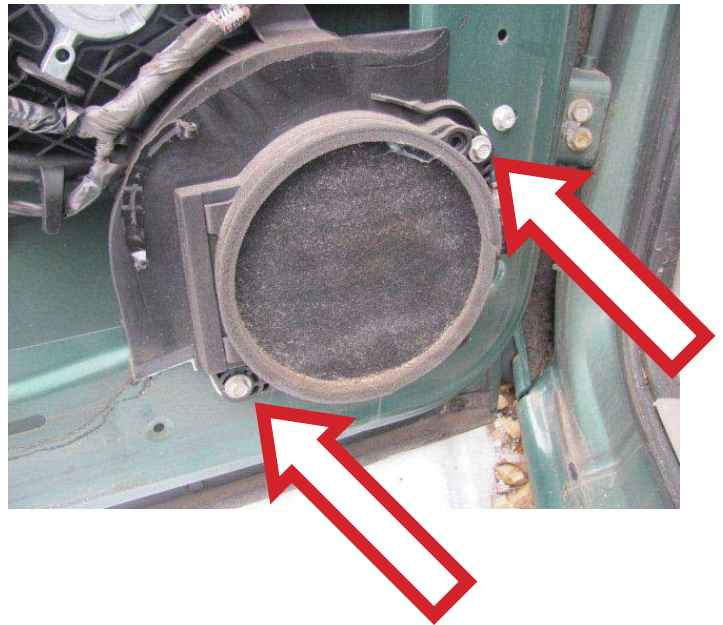
INSTALL/REMOVAL INSTRUCTIONS: WINDOW LIFT MOTOR

ATTENTION: Refer to the appropriate shop manual for your vehicle to obtain specific service procedures for this part. If you do not have a service manual or lack the skill to install this part, it is recommended that you seek the services of a qualified technician. Pay special attention to all cautions and warnings included in the shop manual. Read and follow all instructions carefully.

STEP 6a: Remove the wiring harness from the window regulator module assembly.



STEP 7: Remove the speaker using a 10mm socket.



STEP 7a: Disconnect the speaker assembly and remove.

Disclaimer:

Even though every attempt is made to ensure this information is complete and accurate, it is impossible to account for all possible circumstances or situations. Please consult with a qualified auto technician before attempting to perform any work you are not qualified to do. Automobiles can be hazardous to work on; be sure to take all necessary safety precautions. Failure to do so may result in property damage or personal injury. Certain motor vehicle standards and performance requirements may apply to your motor vehicle (such as Federal Motor Vehicle Safety Standards by the National Highway Traffic Safety Administration). Be sure that your work is performed in accordance with such standards and that you do not disable any motor vehicle safety feature.

©2011 Dorman Products, Inc.

No reproductions in whole or in part without prior written approval.

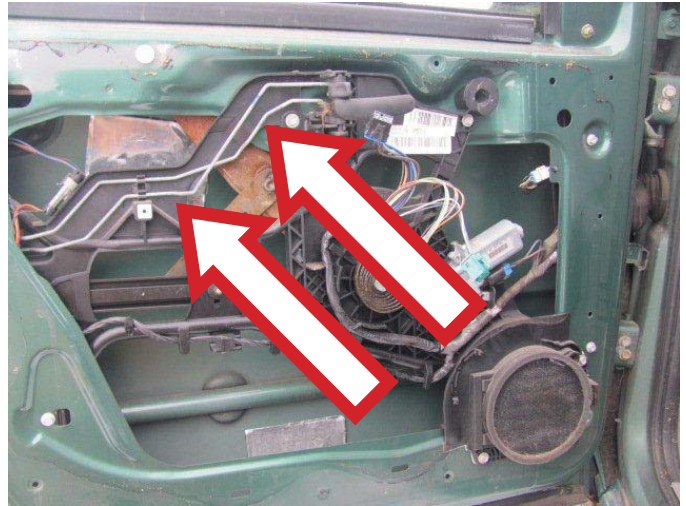
INSTALL/REMOVAL INSTRUCTIONS: WINDOW LIFT MOTOR

ATTENTION: Refer to the appropriate shop manual for your vehicle to obtain specific service procedures for this part. If you do not have a service manual or lack the skill to install this part, it is recommended that you seek the services of a qualified technician. Pay special attention to all cautions and warnings included in the shop manual. Read and follow all instructions carefully.

STEP 8: Remove the window lift motor.



STEP 8a: Disconnect the door handle latch rods from the window regulator door module.



STEP 9: Remove the glass attaching bolts from the door glass.

Disclaimer:

Even though every attempt is made to ensure this information is complete and accurate, it is impossible to account for all possible circumstances or situations. Please consult with a qualified auto technician before attempting to perform any work you are not qualified to do. Automobiles can be hazardous to work on; be sure to take all necessary safety precautions. Failure to do so may result in property damage or personal injury. Certain motor vehicle standards and performance requirements may apply to your motor vehicle (such as Federal Motor Vehicle Safety Standards by the National Highway Traffic Safety Administration). Be sure that your work is performed in accordance with such standards and that you do not disable any motor vehicle safety feature.

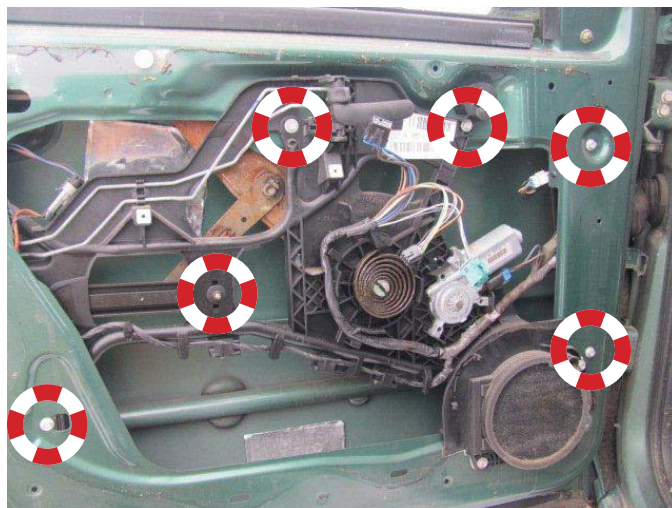
©2011 Dorman Products, Inc.

No reproductions in whole or in part without prior written approval.

INSTALL/REMOVAL INSTRUCTIONS: WINDOW LIFT MOTOR

ATTENTION: Refer to the appropriate shop manual for your vehicle to obtain specific service procedures for this part. If you do not have a service manual or lack the skill to install this part, it is recommended that you seek the services of a qualified technician. Pay special attention to all cautions and warnings included in the shop manual. Read and follow all instructions carefully.

STEP 9a: Remove the bolts attaching the window regulator module assembly to the door.



STEP 10: Remove the window regulator module assembly.

Disclaimer:

Even though every attempt is made to ensure this information is complete and accurate, it is impossible to account for all possible circumstances or situations. Please consult with a qualified auto technician before attempting to perform any work you are not qualified to do. Automobiles can be hazardous to work on; be sure to take all necessary safety precautions. Failure to do so may result in property damage or personal injury. Certain motor vehicle standards and performance requirements may apply to your motor vehicle (such as Federal Motor Vehicle Safety Standards by the National Highway Traffic Safety Administration). Be sure that your work is performed in accordance with such standards and that you do not disable any motor vehicle safety feature.

©2011 Dorman Products, Inc.

No reproductions in whole or in part without prior written approval.

INSTALL/REMOVAL INSTRUCTIONS: WINDOW LIFT MOTOR

ATTENTION: Refer to the appropriate shop manual for your vehicle to obtain specific service procedures for this part. If you do not have a service manual or lack the skill to install this part, it is recommended that you seek the services of a qualified technician. Pay special attention to all cautions and warnings included in the shop manual. Read and follow all instructions carefully.

Installation Instructions

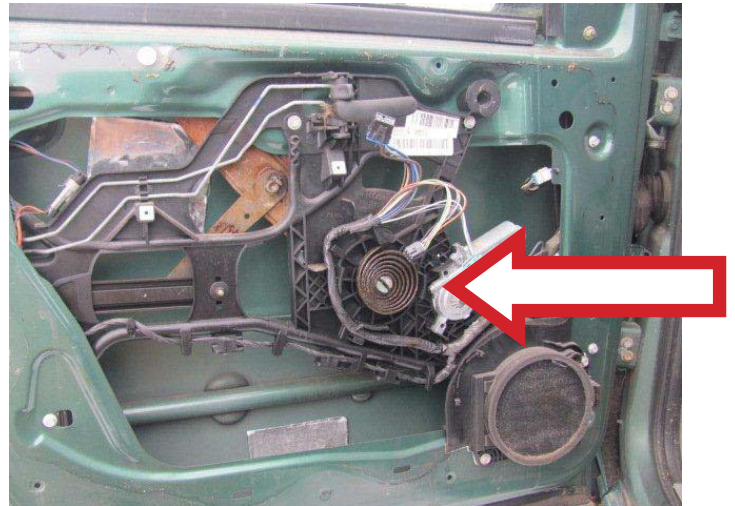
STEP 1: Verify that the drive gear on the window lift motor and the sector teeth on the regulator are lubricated.

STEP 2: Snap the window lift motor into position on the window regulator module assembly.

STEP 3: Attach the window regulator onto the window regulator module assembly.

IMPORTANT: Be sure to line up the grease pencil or marker line from the removal procedure. Lining up the mark will set the proper amount of pre-tension on the counterbalance spring tensioner.

STEP 4: Attach the counterbalance spring tensioner onto the window regulator module assembly.



STEP 5: Attach the window regulator door assembly onto the door.

STEP 6: Attach the bolts to the door glass. Be sure not to overtighten the bolts.

Disclaimer:

Even though every attempt is made to ensure this information is complete and accurate, it is impossible to account for all possible circumstances or situations. Please consult with a qualified auto technician before attempting to perform any work you are not qualified to do. Automobiles can be hazardous to work on; be sure to take all necessary safety precautions. Failure to do so may result in property damage or personal injury. Certain motor vehicle standards and performance requirements may apply to your motor vehicle (such as Federal Motor Vehicle Safety Standards by the National Highway Traffic Safety Administration). Be sure that your work is performed in accordance with such standards and that you do not disable any motor vehicle safety feature.

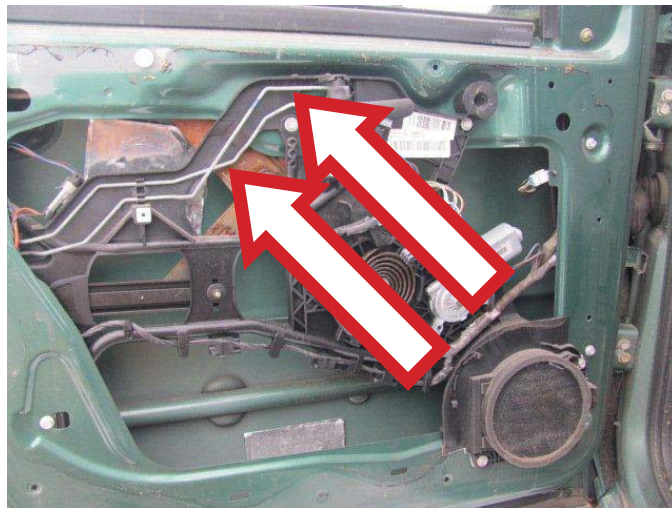
©2011 Dorman Products, Inc.

No reproductions in whole or in part without prior written approval.

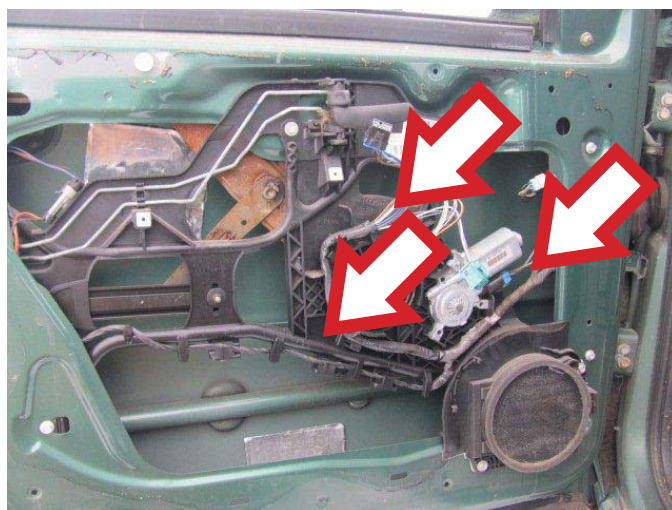
INSTALL/REMOVAL INSTRUCTIONS: WINDOW LIFT MOTOR

ATTENTION: Refer to the appropriate shop manual for your vehicle to obtain specific service procedures for this part. If you do not have a service manual or lack the skill to install this part, it is recommended that you seek the services of a qualified technician. Pay special attention to all cautions and warnings included in the shop manual. Read and follow all instructions carefully.

STEP 7: Attach the door handle latch rod and the door lock rod into the window regulator module assembly.



STEP 8: Attach the door wiring harness assembly onto the window regulator module assembly.



STEP 8a: Attach the electrical connector to the window lift motor.



Disclaimer:

Even though every attempt is made to ensure this information is complete and accurate, it is impossible to account for all possible circumstances or situations. Please consult with a qualified auto technician before attempting to perform any work you are not qualified to do. Automobiles can be hazardous to work on; be sure to take all necessary safety precautions. Failure to do so may result in property damage or personal injury. Certain motor vehicle standards and performance requirements may apply to your motor vehicle (such as Federal Motor Vehicle Safety Standards by the National Highway Traffic Safety Administration). Be sure that your work is performed in accordance with such standards and that you do not disable any motor vehicle safety feature.

©2011 Dorman Products, Inc.

No reproductions in whole or in part without prior written approval.

INSTALL/REMOVAL INSTRUCTIONS: WINDOW LIFT MOTOR

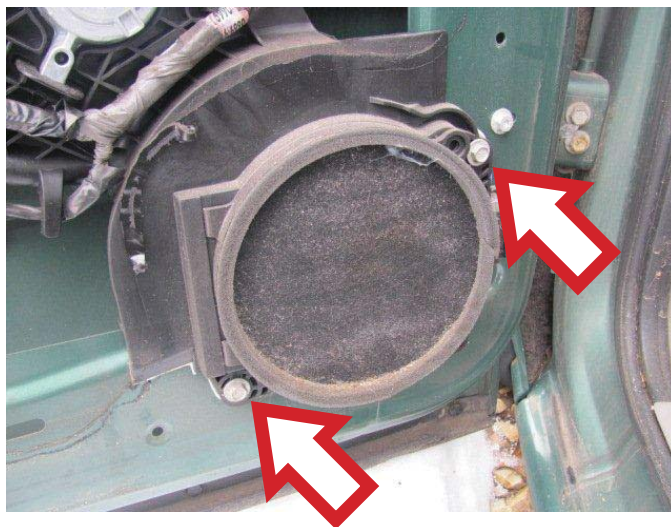
ATTENTION: Refer to the appropriate shop manual for your vehicle to obtain specific service procedures for this part. If you do not have a service manual or lack the skill to install this part, it is recommended that you seek the services of a qualified technician. Pay special attention to all cautions and warnings included in the shop manual. Read and follow all instructions carefully.

STEP 9: Attach the main electrical harness connector.



STEP 10: Temporarily attach the power master switch to verify that the window moves up and down freely. Lubricate the window tracks with a clear silicone, as needed.

STEP 11: Install the door speaker into the door re-using the original bolts, be sure to plug in the door speaker before tightening the bolts.



Disclaimer:

Even though every attempt is made to ensure this information is complete and accurate, it is impossible to account for all possible circumstances or situations. Please consult with a qualified auto technician before attempting to perform any work you are not qualified to do. Automobiles can be hazardous to work on; be sure to take all necessary safety precautions. Failure to do so may result in property damage or personal injury. Certain motor vehicle standards and performance requirements may apply to your motor vehicle (such as Federal Motor Vehicle Safety Standards by the National Highway Traffic Safety Administration). Be sure that your work is performed in accordance with such standards and that you do not disable any motor vehicle safety feature.

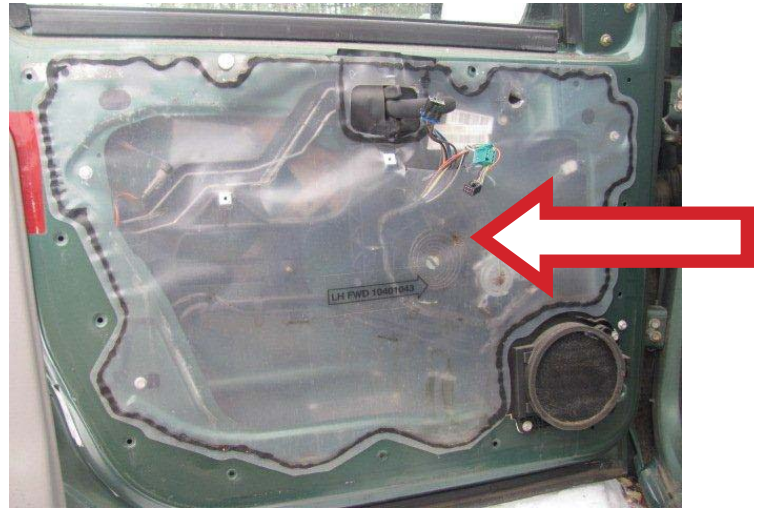
©2011 Dorman Products, Inc.

No reproductions in whole or in part without prior written approval.

INSTALL/REMOVAL INSTRUCTIONS: WINDOW LIFT MOTOR

ATTENTION: Refer to the appropriate shop manual for your vehicle to obtain specific service procedures for this part. If you do not have a service manual or lack the skill to install this part, it is recommended that you seek the services of a qualified technician. Pay special attention to all cautions and warnings included in the shop manual. Read and follow all instructions carefully.

STEP 12: Install the water barrier shield.



STEP 13: Align the door trim panel retainers. With light to moderate pressure, push the door panel into position.



Disclaimer:

Even though every attempt is made to ensure this information is complete and accurate, it is impossible to account for all possible circumstances or situations. Please consult with a qualified auto technician before attempting to perform any work you are not qualified to do. Automobiles can be hazardous to work on; be sure to take all necessary safety precautions. Failure to do so may result in property damage or personal injury. Certain motor vehicle standards and performance requirements may apply to your motor vehicle (such as Federal Motor Vehicle Safety Standards by the National Highway Traffic Safety Administration). Be sure that your work is performed in accordance with such standards and that you do not disable any motor vehicle safety feature.

©2011 Dorman Products, Inc.

No reproductions in whole or in part without prior written approval.

INSTALL/REMOVAL INSTRUCTIONS: WINDOW LIFT MOTOR

ATTENTION: Refer to the appropriate shop manual for your vehicle to obtain specific service procedures for this part. If you do not have a service manual or lack the skill to install this part, it is recommended that you seek the services of a qualified technician. Pay special attention to all cautions and warnings included in the shop manual. Read and follow all instructions carefully.

STEP 14: Attach the door trim panel retaining screws.



STEP 15: Install the power master door switch assembly.



**We appreciate your opinions regarding this product!
Please call our Technical Assistant with any challenges or suggestions
regarding the installation or operation of this product.**

1-800-523-2492

Disclaimer:

Even though every attempt is made to ensure this information is complete and accurate, it is impossible to account for all possible circumstances or situations. Please consult with a qualified auto technician before attempting to perform any work you are not qualified to do. Automobiles can be hazardous to work on; be sure to take all necessary safety precautions. Failure to do so may result in property damage or personal injury. Certain motor vehicle standards and performance requirements may apply to your motor vehicle (such as Federal Motor Vehicle Safety Standards by the National Highway Traffic Safety Administration). Be sure that your work is performed in accordance with such standards and that you do not disable any motor vehicle safety feature.

©2011 Dorman Products, Inc.

No reproductions in whole or in part without prior written approval.