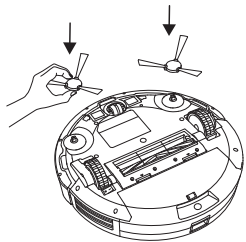
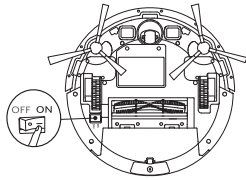


# Quick Start Guide

## Using Your RoboVac



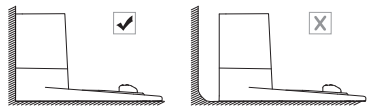
1



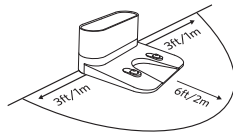
2



Remove the sticker next to the power switch, and the foam blocks beside the bumper before use.



3



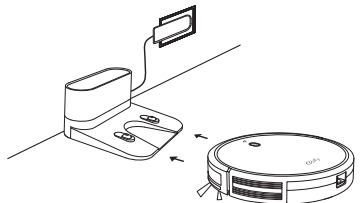
4



If you cannot remove the objects surrounding the Charging Base, check whether RoboVac can return to it without assistance or not; if not, contact eufy customer service for help.



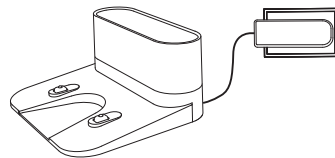
- Always keep the Charging Base plugged in, otherwise RoboVac will not automatically return.  
- When the Charging Base is connected to AC power, the LED indicator on the Charging Base is SOLID WHITE.



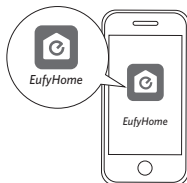
6



Fully charge RoboVac before use. The LED indicator on RoboVac breathes orange while charging, and is solid blue when fully charged.



5



7

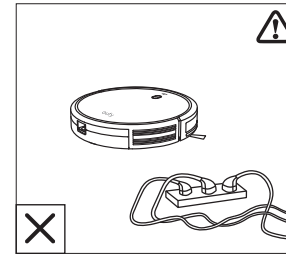


Download the EufyHome app and follow the instructions in the app to complete the Wi-Fi connection. Then you can control RoboVac via this app. Refer to the Owner's Manual for details.

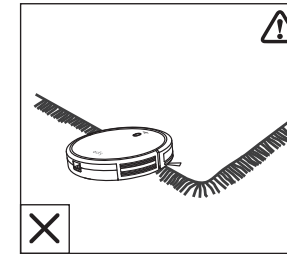


## Important Tips

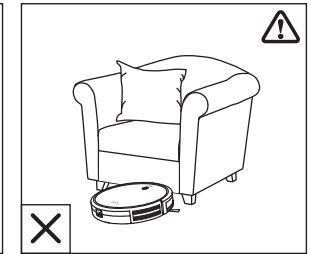
When using for the first time, follow RoboVac to observe and resolve any problems that may occur.



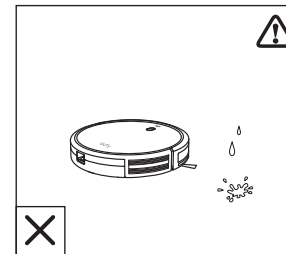
a



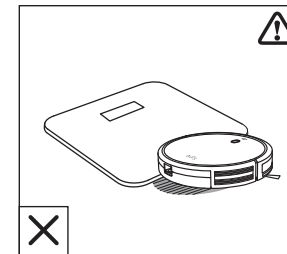
b



c



d



e



f

- a Remove power cords and small objects from the floor that may entangle RoboVac. You can use the supplied cable ties to organize your wires and power cords.
- b Fold tasseled edges of area rugs underneath to prevent tangling RoboVac. Avoid cleaning very dark-colored rugs or high-pile rugs thicker than 1.02 in/26 mm as they may cause RoboVac to malfunction.
- c Keep RoboVac away from spaces lower than 2.87 in/73 mm to prevent RoboVac from getting stuck. If necessary, place a physical barrier to block off the problem areas.
- d Keep RoboVac away from wet areas.
- e RoboVac may climb on top of objects less than 0.63 in/16 mm in height. Remove these objects if possible.
- f Anti-drop sensors prevent RoboVac from tumbling down stairs and steep drops. They may work less effectively if dirty or used on reflective/very dark-colored floors. It is recommended to place a physical barrier to block off problem areas where the device may fall.



Place physical barriers in front of fireplaces and areas that may cause damage to RoboVac if entered.