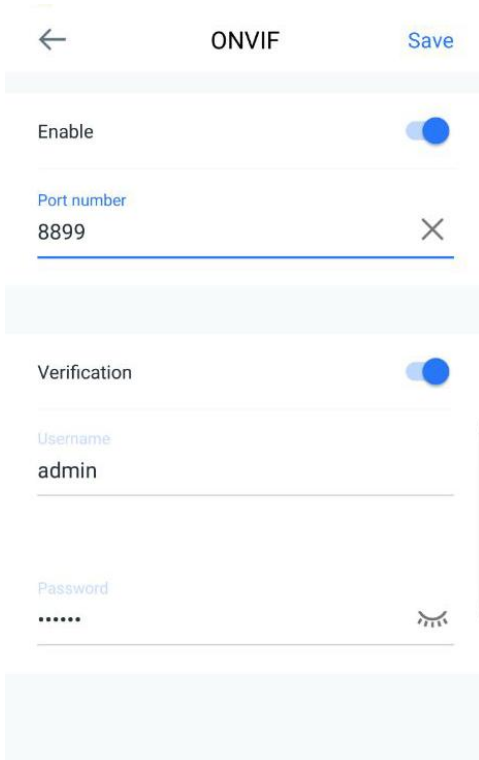


Blue Iris Connection for Q3S Cloud Camera

1. Pls enable “**onvif**” feature and “**Verification**” on settings page on Wansview Cloud app first.
(app will generate default username and password automatically after enabled onvif, but you can change them by yourself)



← ONVIF Save

Enable

Port number
8899 ✕

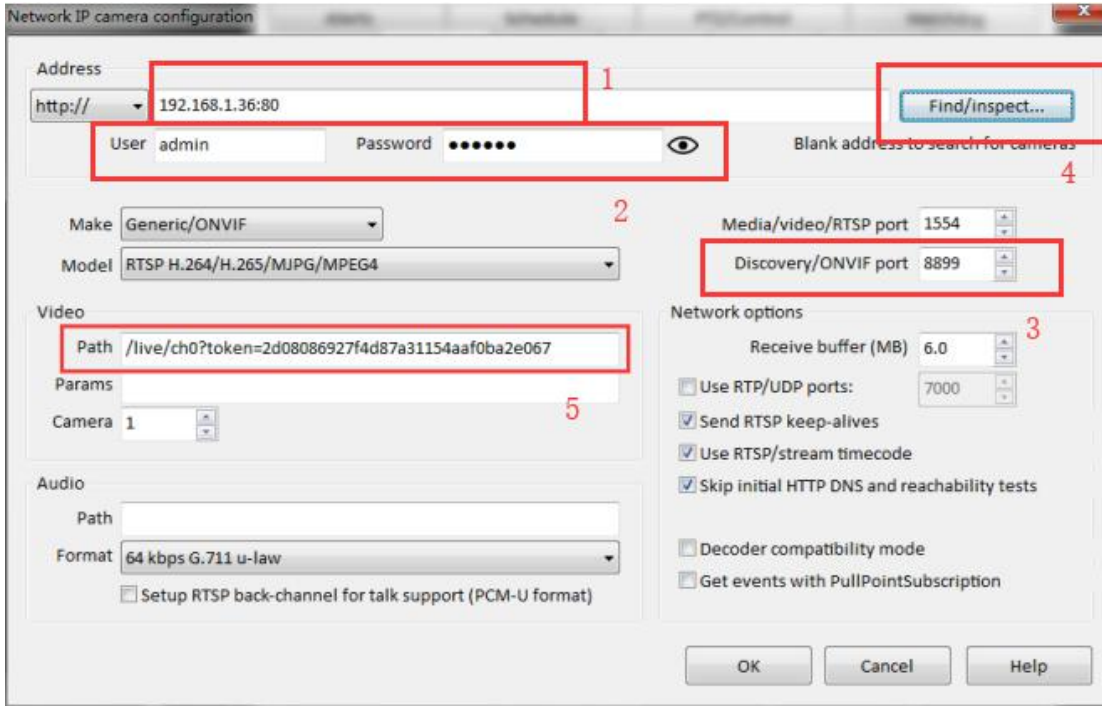
Verification

Username
admin

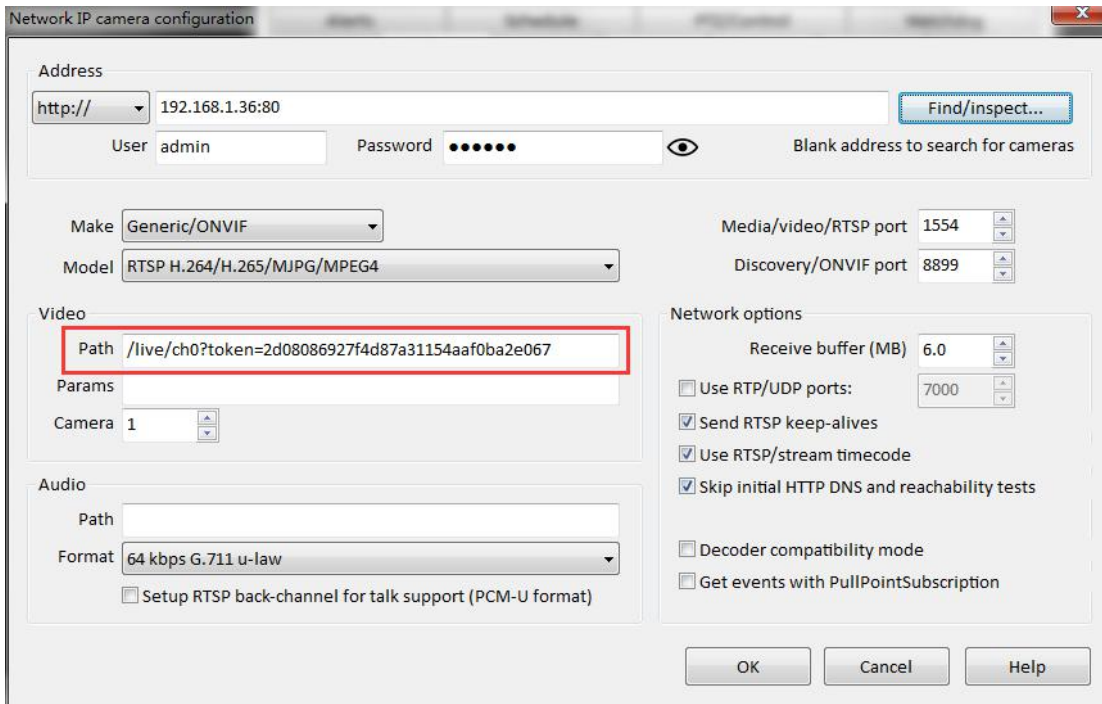
Password
.....

2. hit “+” to add camera on Blue Iris as below.

- **http://**: input camera IP address
- **User**: admin (input the username you set up on Wansview Cloud app)
- **Password**: 123456 (input the password you set up on Wansview Cloud app)
- Fill port 8899 on “**Discovery/ONVIF port**” option (input the port you set up on Wansview Cloud app)
- Hit “**Find/inspect**” option



3. After clicking the **Find/inspect** option, it will search out the path automatically ("ch0" in the path means different stream, you can change it to "ch1" as well. Please note other information can't change)



4. Tap **OK**, then it will connect the camera directly. (Please note our camera doesn't support night vision, microphone on Blue Iris)

