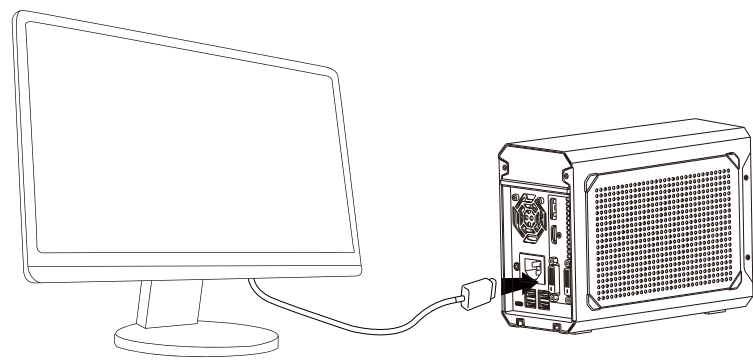


4. Connect AORUS GTX 1070 Gaming Box to your external monitor by the DP(display port) or HDMI or DVI-D.

Note:

You can connect a USB keyboard, USB mouse and USB headset to AORUS GTX 1070 Gaming Box



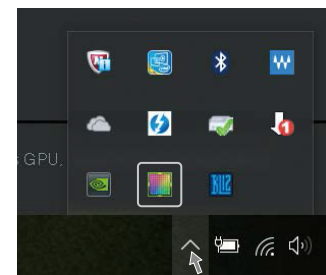
5. Install the GTX 1070 Graphics card driver from the driver CD or the website.

6. Install the AORUS Graphics Engine to customize your preference.

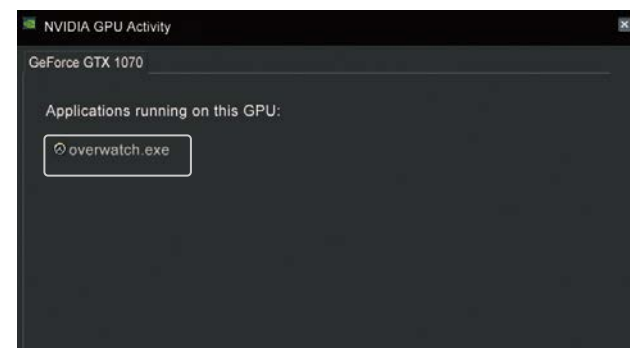
Note:

1. How to check if the application is running by the external GPU – Geforce GTX 1070.

1-1. Click on the icon [Nvidia GPU Activity] in the notification area. (If there is no icon, please add it from NVIDIA Control Panel. Make sure the graphics driver is installed)



1-2. Display the applications that are running by external GPU - Geforce GTX 1070.



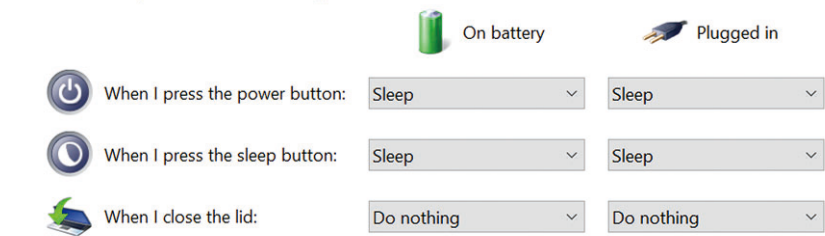
2. Before you re-plug the Thunderbolt™ cable, please wait until the Thunderbolt™ disconnected sound is played and the icon in the notification area is disappeared. If the PC can't recognize the Thunderbolt™ device, please restart the system.

3. Please keep the clearance near the box for better airflow. Poor ventilation will reduce the performance of the graphics card

4. To use the wired network, you may plug a " USB to Ethernet LAN Adaptor" into the USB 3.0 port on the AORUS GTX 1070 Gaming Box.

5. How to keep the PC working with the lid closed – go to Windows setting → Control panel\Hardware and Sound\Power Options\System Settings. Then set the item "When I close the lid" to "Do nothing".

Power and sleep buttons and lid settings



Equipment name 設備名稱: 電競外接盒 Type designation (Type) 型號 (型式): GV-N1070IXEB-8GD						
單元Unit	Restricted substances and its chemical symbols 限用物質及其化學符號					
	鉛 Lead (Pb)	汞 Mercury (Hg)	鎘 Cadmium (Cd)	六價鉻 Hexavalent chromium (Cr+6)	多溴聯苯 Polybrominated biphenyls (PBB)	多溴二苯醚 Polybrominated diphenyl ethers (PBDE)
電路板	○	○	○	○	○	○
鐵殼	-	○	○	○	○	○
線材組件	○	○	○	○	○	○
風扇	○	○	○	○	○	○

備考1: "超出0.1 wt %" 及 "超出0.01 wt %" 係指限用物質之百分比含量超出百分比含量基準值。
Note 1: "Exceeding 0.1 wt %" and "exceeding 0.01 wt %" indicate that the percentage content of the restricted substance exceeds the reference percentage value of presence condition.
備考2: "○" 係指該項限用物質之百分比含量未超出百分比含量基準值。
Note 2: "○" indicates that the percentage content of the restricted substance does not exceed the percentage of reference value of presence.
備考3: "-" 係指該項限用物質為排除項目。
Note 3: The "-" indicates that the restricted substance corresponds to the exemption.



AORUS GTX 1070 GAMING BOX

With Geforce GTX 1070 Graphics card embedded

Installation Guide Rev.1.1

PACKAGE CONTENT:

- AORUS GTX 1070 Gaming Box (includes GIGABYTE Geforce GTX 1070 MINI ITX Graphics card GV-N1070IXOC-8GD)*1
- Thunderbolt™ 3 Cable (USB Type-C) *1
- Power Cord*1
- Installation Guide *1
- Driver CD *1
- Carry Bag *1

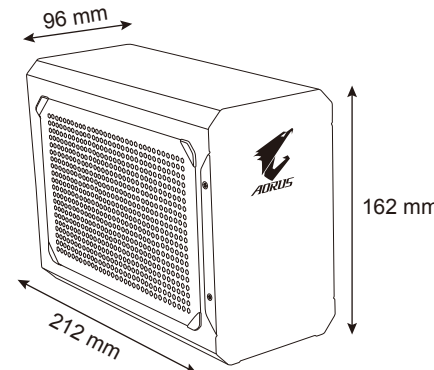
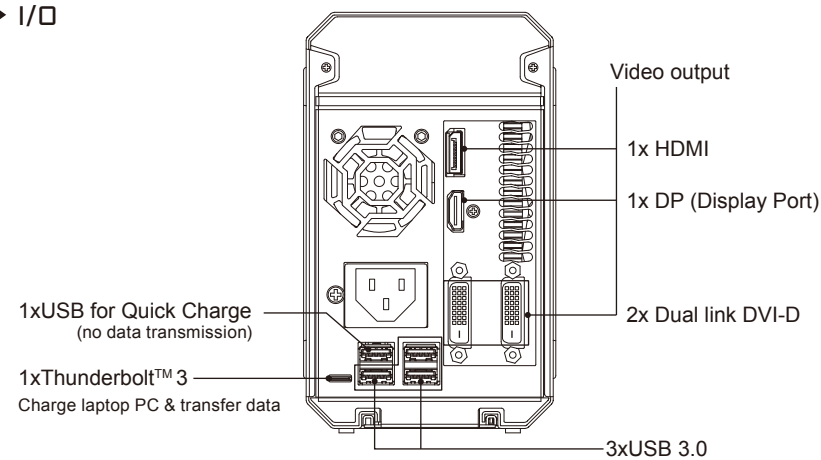
SYSTEM REQUIREMENT:

- Laptop PC / Desktop PC with Thunderbolt™ 3 port and supports external GPU
- Windows 10

PRODUCT FEATURES:

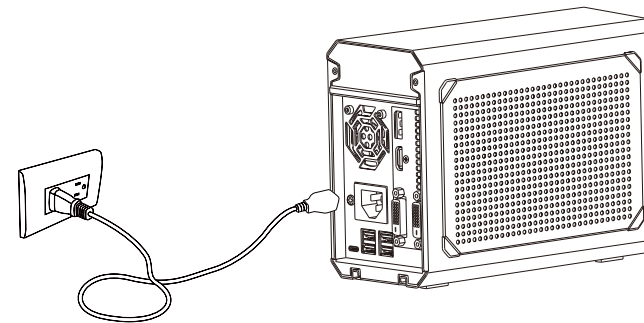
- Powerful Geforce GTX 1070 enables graphics-intensive game and VR ready.
- Thunderbolt™3 plug and play
- Easy to carry with portable size
- Supports Quick Charge (QC 3.0) to charge portable device
- Supports Power Delivery (PD 3.0) to charge laptop PC
- Supports 3x USB 3.0 for peripheral
- RGB fusion - 16.8M Customizable Color Lighting

I/O

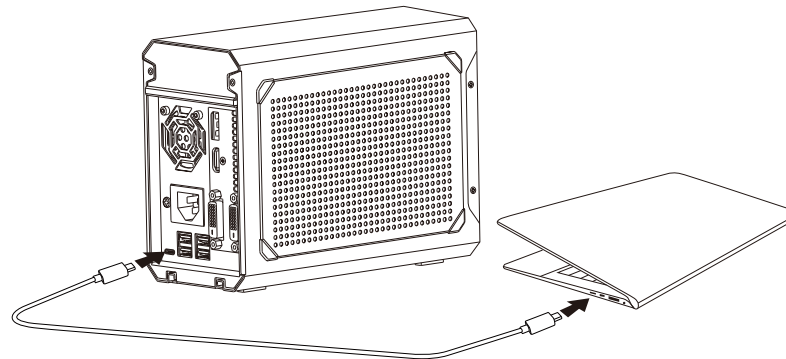


INSTALLATION

1. Connect AORUS GTX 1070 Gaming Box to a power source 100V ~ 240V by the power cord.

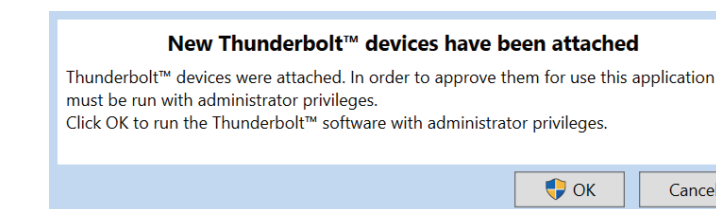


2. Connect AORUS GTX 1070 Gaming Box to the Laptop PC/Desktop PC by Thunderbolt™ USB type-C cable.

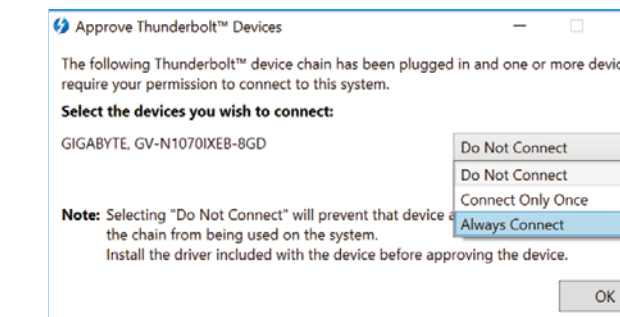


3. Click on to confirm the Thunderbolt™ connection of "GIGABYTE, GV-N1070IXEB-8GD". When it's connected, the RGB light of the box will turn on.

3-1 Click on OK, when the Thunderbolt™ cable is connected to PC.



3-2 Choose "Always connect" for "GIGABYTE, GV-N1070IXEB-8GD"



Copyright
© 2017 GIGABYTE TECHNOLOGY CO., LTD.
Copyright by GIGA-BYTE TECHNOLOGY CO., LTD. ("GBT"). No part of this manual may be reproduced or transmitted in any form without the expressed, written permission of GBT.
Trademarks
Third-party brands and names are the properties of their respective owners.
Notice
Please do not remove any labels on this graphics card box. Doing so may void the warranty of this card. Due to rapid change in technology, some of the specifications might be out of date before publication of this manual. The author assumes no responsibility for any errors or omissions that may appear in this document nor does the author make a commitment to update the information contained herein.