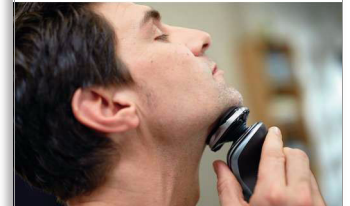




Philips Norelco Shaver
series 5000
Shaving heads

MultiPrecision blades

Fits S5000 (S5xxx)
Fits AquaTouch (S5xxx)
Fits Star Wars Shaver SW57xx



SH50/52

Reset your shaver to new

Change heads every 12 months for best results

Within one year your shaver heads cut 4.5 million hairs on your face. Replace the shaver heads and get back peak performance. Compatible with the Series 5000 and AquaTouch Shaver.

Close, fast shave

- Blades raise then cut long and short hairs for a fast shave
- Super Lift & Cut Action lifts hairs to cut comfortably close

Easy to use

- Replacement reminder
- Easy to replace shaving heads
- Reset your shaver after replacing shaving heads
- Reset your shaver to new



PHILIPS
NORELCO

Shaving heads

MultiPrecision blades Fits S5000 (S5xxx), Fits AquaTouch (S5xxx), Fits Star Wars Shaver SW57xx

Highlights

MultiPrecision blades



Get a shave that's fast and close. Our MultiPrecision blades raises and cuts all hairs and remaining stubble – all in a few strokes.

Super Lift & Cut Action



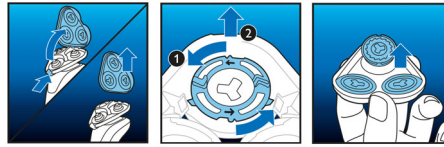
Shave closer with the dual-blade Super Lift & Cut action. The first blade raises each hair while the second blade comfortably cuts below skin level, for really smooth results.

Replacement reminder



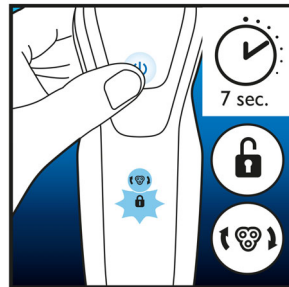
The latest Philips shavers have an inbuilt replacement reminder in the form of a shaving unit symbol. This symbol will light up and indicate you when to replace shaving heads.

Simple replacement



1. Open the shaver by pressing the "release" button; 2. Remove the retaining rings by turning them counterclockwise; 3. Take out the old shaving heads and carefully insert replacements; check that the heads align exactly in the setting; 4. Replace the retaining rings and secure them by turning the lock clockwise; 5. When you close the shaving head properly, you will hear it click into place.

How to reset your shaver



After replacing shaving heads, you can reset the replacement reminder by pressing the on/off button for more than 7 seconds. Otherwise, replacement trigger will turn off automatically after 9 successive shaves.

Reset your shaver to new



To get back to 100% performance, replace your shaving heads every 12 months.

SH50/52

Specifications

Shaving heads

- Fits product type: Shaver series 5000 (S5___), AquaTouch (S5___), PowerTouch (PT8___, PT7___), AquaTouch (AT8___, AT7___)
- Shaving heads per packaging: 3

Cleaning

- Usage: Use cleaning spray HQ110



Issue date 2017-11-04

Version: 9.2.1

© 2017 Koninklijke Philips N.V.
All Rights reserved.

Specifications are subject to change without notice.
Trademarks are the property of Koninklijke Philips N.V.
or their respective owners.

www.philips.com