

Front View

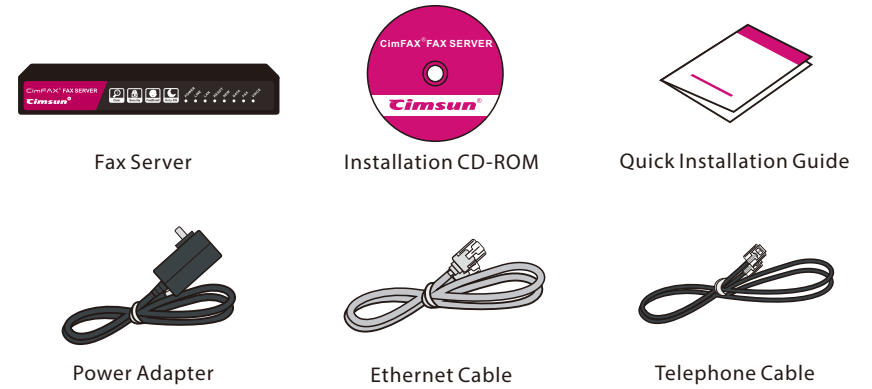


LED	Name	Status	Description
PWR	Power	On	Power on.
		Off	Power failure.
LINE	Telephone line	On / Flash	The port is connected to a telephone line.
		Off	The port is not connected to a telephone line, or in off-hook status.
LAN	Network	On	The port is connected to a network.
		Flash	Sending or receiving network data packets.
READY	Server ready	Off	The port is not connected to a network.
		On	Server is running.
NEW	New fax notification	Flash	Server is initiating.
		Off	Server failure.
DATA	Data storage	Flash	Notifies you have new fax(es).
		On/Flash	The storage is reading or writing data. Power off at this time may cause data loss.
FAX	Fax	On/Flash	Server is receiving or sending fax.
VOICE	Voice	On	Server is playing voice.

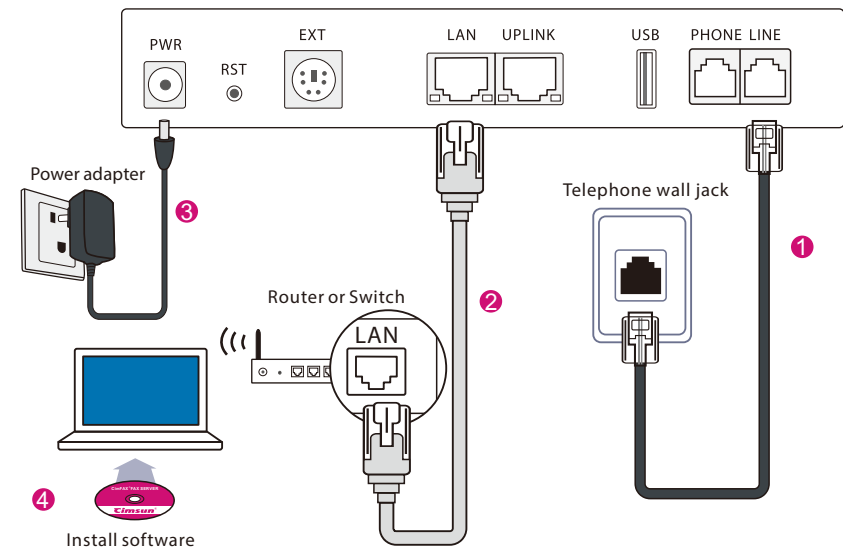
©2017 Cimsun Technology Co., Ltd. All rights reserved. Cimsun/CimFAX and the Cimsun/CimFAX logo are registered trademarks of Cimsun Technology Co., Ltd. in China and/or other countries. Information is subject to change without notice.



Package Contents



Four steps to start



Optional Connections

Connect a telephone or fax machine to PHONE

Connect a telephone to the PHONE port with a telephone line to manually answer incoming calls before server auto answer.

Connect a fax machine to the PHONE port to send a paper fax which needs scanning.

Connect another fax server or computer to UPLINK

Connect another fax server to the LAN-OUT port with an Ethernet cable to allow multiple fax servers operating within the local area network at the same time.

Connect a computer to the LAN-OUT port to let the computer access network with the server through one port.

Warning Beep codes

If the server beeps, refer to the following beep codes.

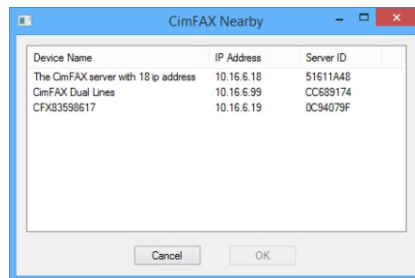
- **A single beep per 3 seconds** -- telephone line is disconnected.
- **Beeps repeating 1 long, 2 short** -- server failure.

Software Installation

1. Download CimFAX client from the CD in the package or from our website.

Note: for the latest client, please download at <https://www.cimfax.com>.

2. When you run CimFAX client for the first time, it will auto find CimFAX device nearby.



3. Select the CimFAX device found, click OK. Enter default user name and password:

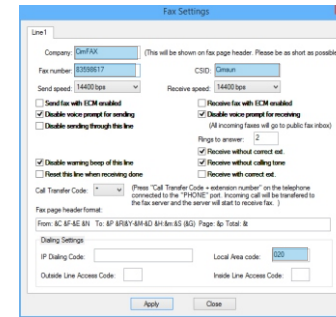
User name: admin

Password: admin

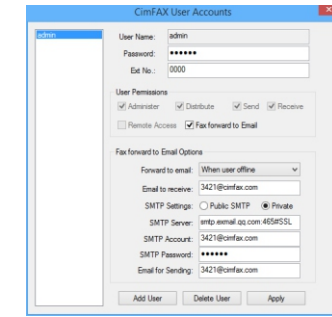


Note: If CimFAX client fails to obtain an IP address from DHCP server, it will generate a random IP address such as 169.254.100.x (x could be any valid digit between 0 and 255). In this case, you will need to add an IP address such as 169.254.100.n (n could be any valid digit between 0 and 255, different from x) to your computer. Then log into CimFAX client to specify a static IP address for CimFAX server. Please contact our customer service for help if you find it confusing.

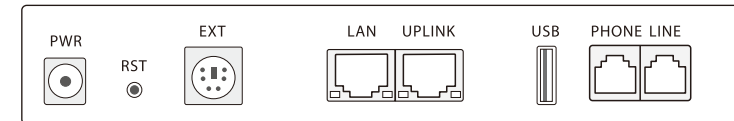
4. Go to "Server > Fax Options" to enter your information. Highlighted items are required.



5. Go to Server > User Accounts to add more user accounts.



Rear View



Port	Item	Description
PWR	Power in	Connects to a Power adapter.
RST	Reset button	Restores settings to factory default. Details refer to "4.8 Restore factory settings" in the User Manual .
EXT	External function	Reserved.
LAN	Ethernet (RJ 45)	Connects to an Ethernet 10/100M based network.
UPLINK	Ethernet (RJ 45)	Connects to another network device.
USB	USB	Reserved.
LINE	Telephone line (RJ 11)	Connects to a telephone line.
PHONE	Telephone device (RJ 11)	Connects to a telephone or fax machine. Details refer to "6.2 Manual Answer" in the User Manual .