
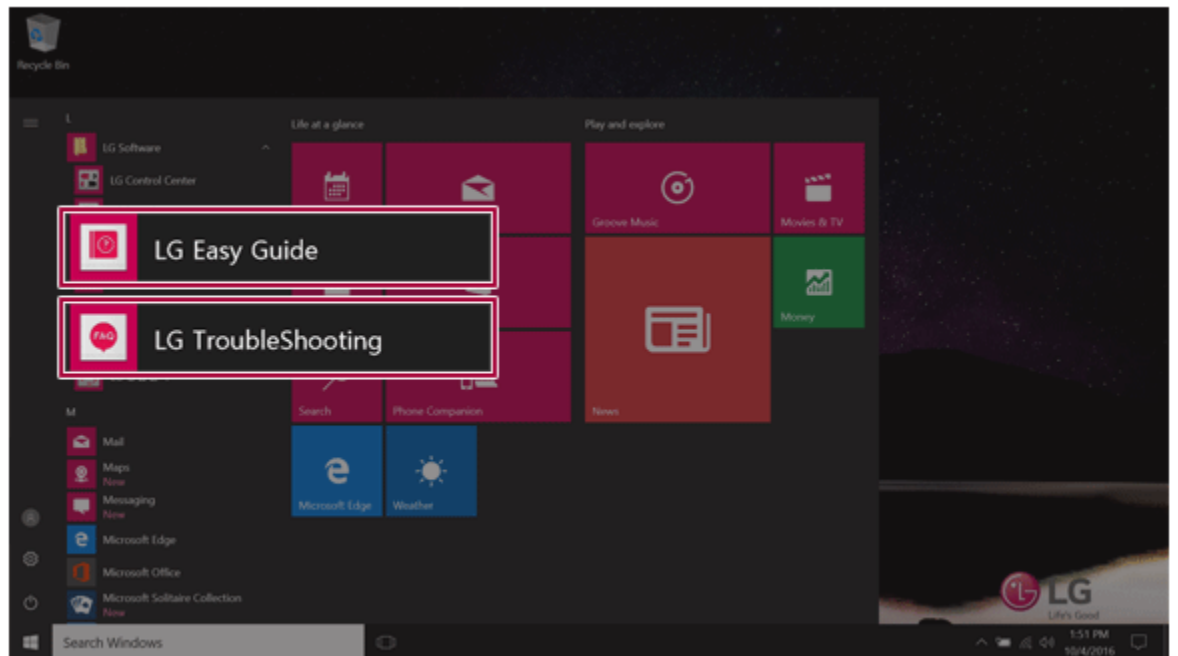


Using LG Easy Guide and LG Troubleshooting

LG Electronics Inc. provides LG Easy Guide (User's Guide) and LG Troubleshooting (Troubleshooting Guide) to users for their easy and convenient use of the product.

- Press [], select [LG Software], and run [LG Easy Guide] or [LG Troubleshooting].

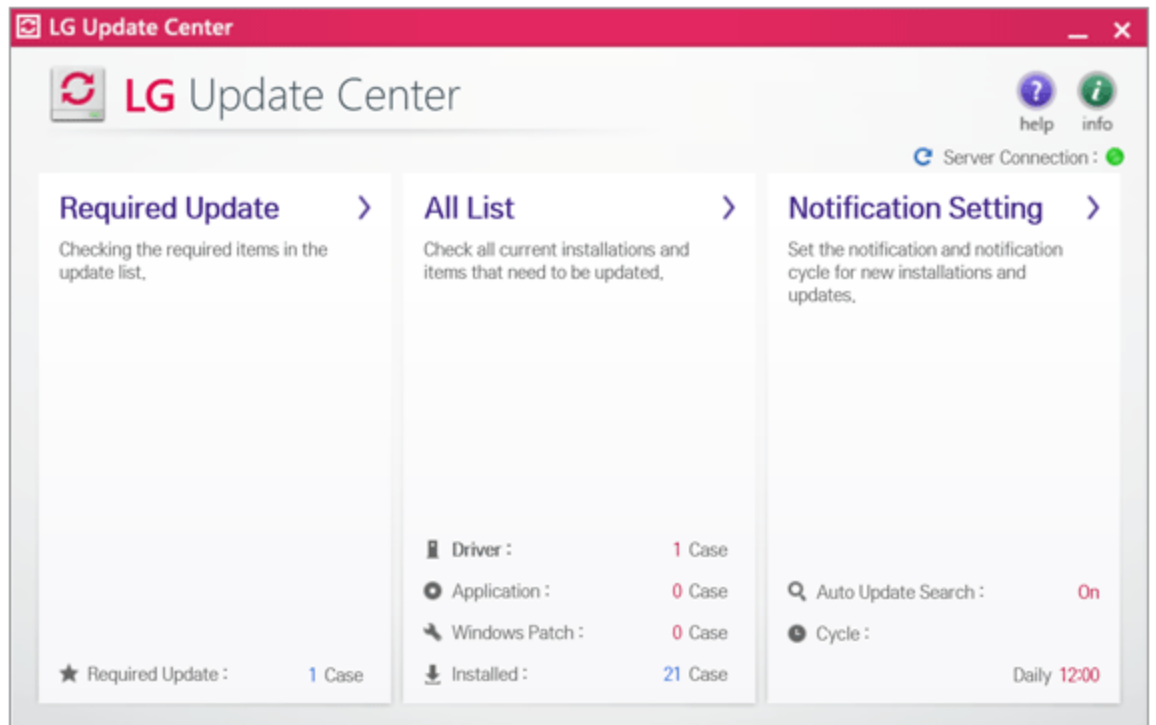


Installing the Driver

The figures herein may differ by language selection and are subject to change without prior notice.

Using LG Update Center to install the Driver

1. Select the [] button > [LG Software] to run [LG Update Center].



2. Select [Required Update] or [All List] to install the driver.

Tip:

You can use the LG Update Center to quickly install the latest drivers, or reinstall any deleted drivers.

Use LG Update Center to keep your system current and optimized.

How to Download LG Update Center

You can install LG Update Center by downloading it from the LG Electronics Service Center (www.lg.com).

Starting System Setup

System setup means storing the hardware configuration information of the PC in the flash memory. Through system setup, the PC retrieves various information including current date and time, memory capacity, and hard disk capacity and type.

You setup the system when you set passwords, change the boot order, and add new peripheral devices to the machine.

Items displayed on the Setup screen may differ by model type and specification. Refer to

- Refer to [Setting the Password](#).
- Refer to [Changing or Deleting the Password](#).

- Refer to [Restoring the Factory Default Settings](#).

Tip:

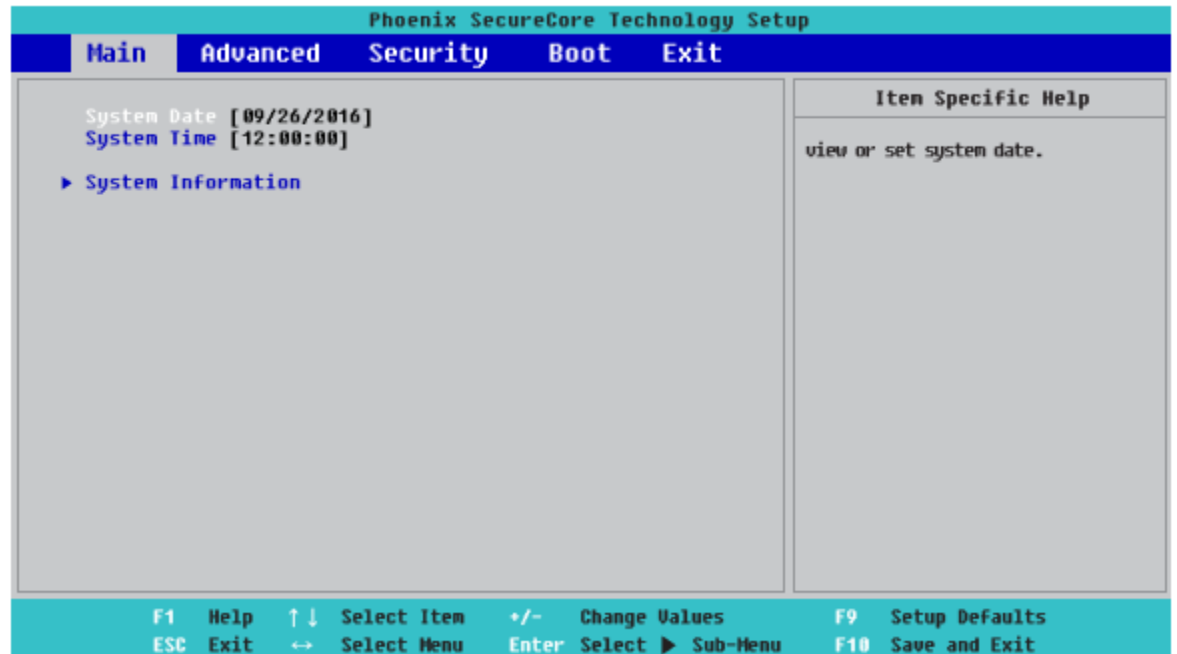
To use the system setup (F2), booting device selection (F10), or recovery (F11), you need to restart the system (click [Restart] in the system power menu) and then immediately press the corresponding function key due to the fast booting speed.

Caution:

- Do not change the system setup unless necessary. Incorrect system setup may cause errors during system operation. Use caution when changing the system setup.
 - For performance improvement, the system setup menu configuration and the initial setup status may be changed and may become different from images included in the user manual.
1. Reboot the system and press [F2].



2. In a few moments, the system setup screen appears.



Keys Used in System Setup

Keys	Function
Enter	Selects the current item.
Esc	To deselect the current item or to move to the previous screen.
▲, ▼, ◀, ▶ (Arrow keys)	Moves the cursor up, down, left, and right.
+, —	Increases or decreases the item value.
F10	Saves the new settings or exits the system setup.

Setting the Password

This process is to set a password so that other people cannot use the PC or change the settings.

The user can set a password while booting the system or setting up the system.

The model in the example can differ from actual models and is subject to change for performance improvements, without prior notice.

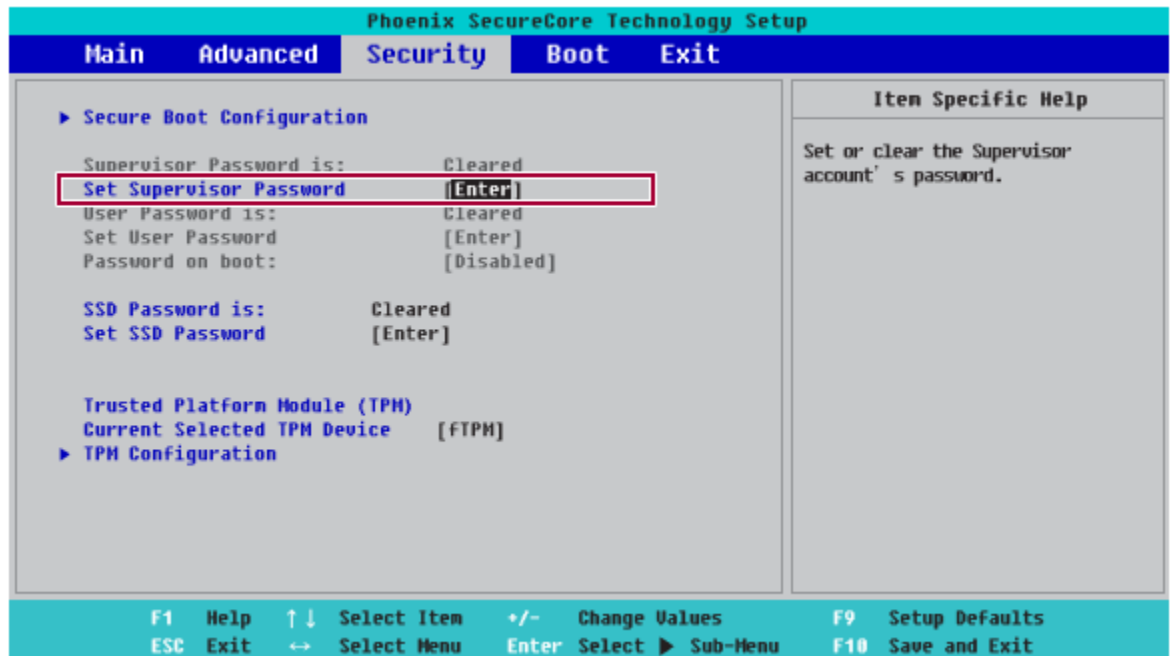
Caution:

- Without the registered password, access to the system will be denied. Write down and keep the password in a safe place.

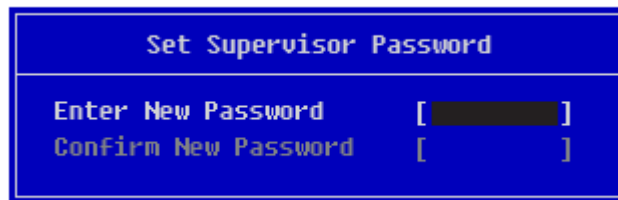
Set Supervisor Password

The password prevents unauthorized people from accessing the PC. By default, no password is set for the machine. If an unauthorized person changes the password in the System Setup, you will be unable to access the system.

- After opening the system setup screen, use the arrow keys to move to [Security].
- When the following screen shows up, click [Set Supervisor Password] by using the arrow keys and press [Enter].



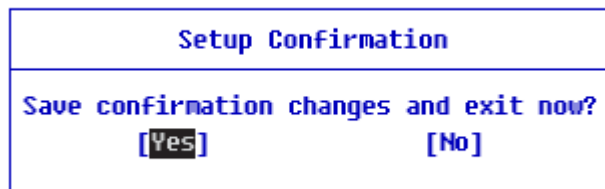
- When the following message shows up on the screen, enter the password and press [Enter]. The password must not exceed 8 characters consisting of letters (A - Z), numbers (0 - 9), or a combination of both.



- When the following message appears, select and press [Enter].



5. To save the changes in the system setup, press [F10].
6. When the following message appears, select [Yes] and press [Enter]. The PC will restart.



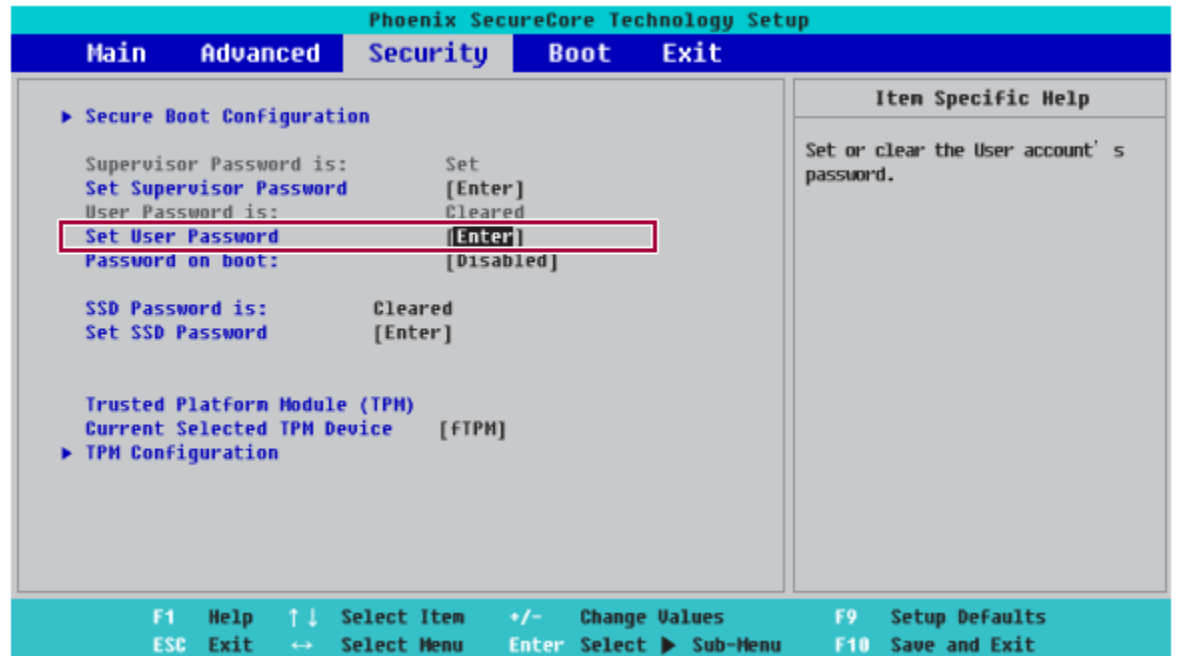
Tip:

- With Supervisor Password, you are authorized to set all items in the System Setup and to set Password on boot. In case other people also use the PC, it is recommended to set the Set User Password.

Set User Password

The password set by the Set User Password process is lower in level than that set by the [Set Supervisor Password] process, and so the user can use the Set User Password only after setting a password in the [Set Supervisor Password] menu.

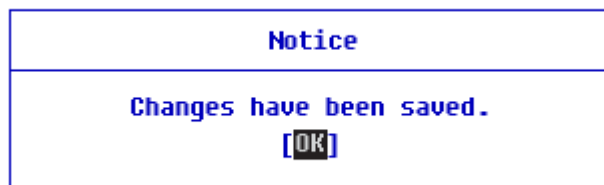
1. After opening the system setup screen, use the arrow keys to move to [Security].
2. When the following screen appears, press [Enter] in the [Set User Password] menu.



- When the following message shows up on the screen, enter the password and press [Enter]. The password must not exceed 8 total characters consisting of letters (A - Z), numbers (0 - 9), or a combination of both.

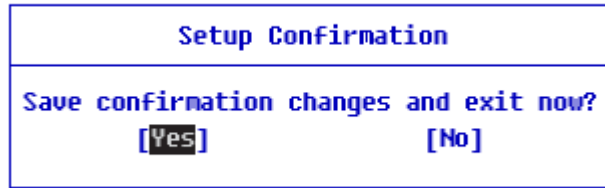


- When the following message appears, select and press [Enter].



- To save the changes in the system setup, press [F10].

- When the following message appears, select [Yes] and press [Enter]. The PC will restart.



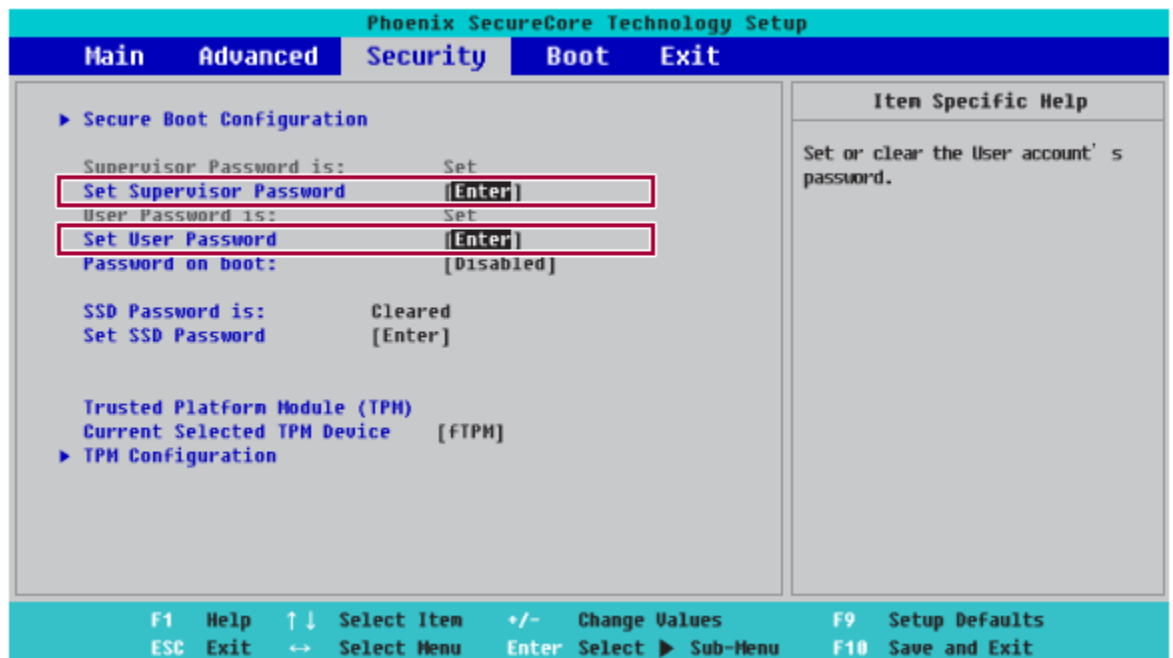
Tip:

- [User Password] allows limited access to the items in the System Setup compared to the [Supervisor Password] item.

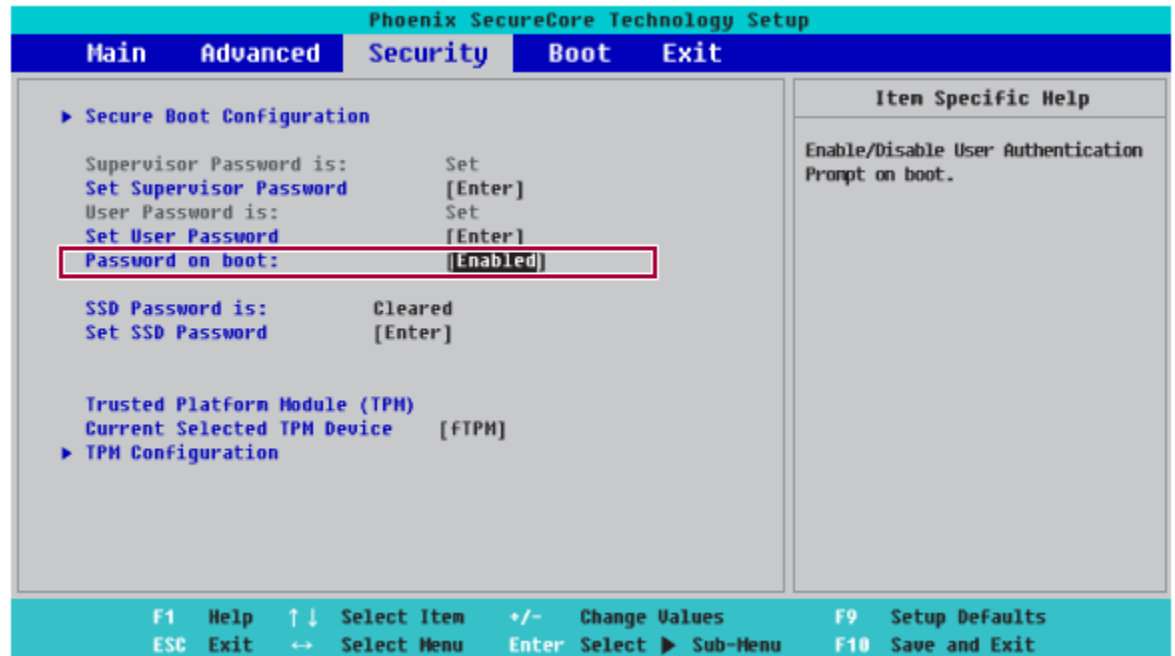
Password on boot

Password on boot protects the system by requesting [Set Supervisor Password] or [Set User Password] during boot up.

- After opening the system setup screen, use the arrow keys to move to [Security].
- When the following screen appears, set [Set Supervisor Password] only or both [Set Supervisor Password] and [Set User Password].



- The popup screen will show up, after selecting [Password on boot] and press [Enter]. After selecting [Enable] and press [Enter], [Password on boot] will be complete.



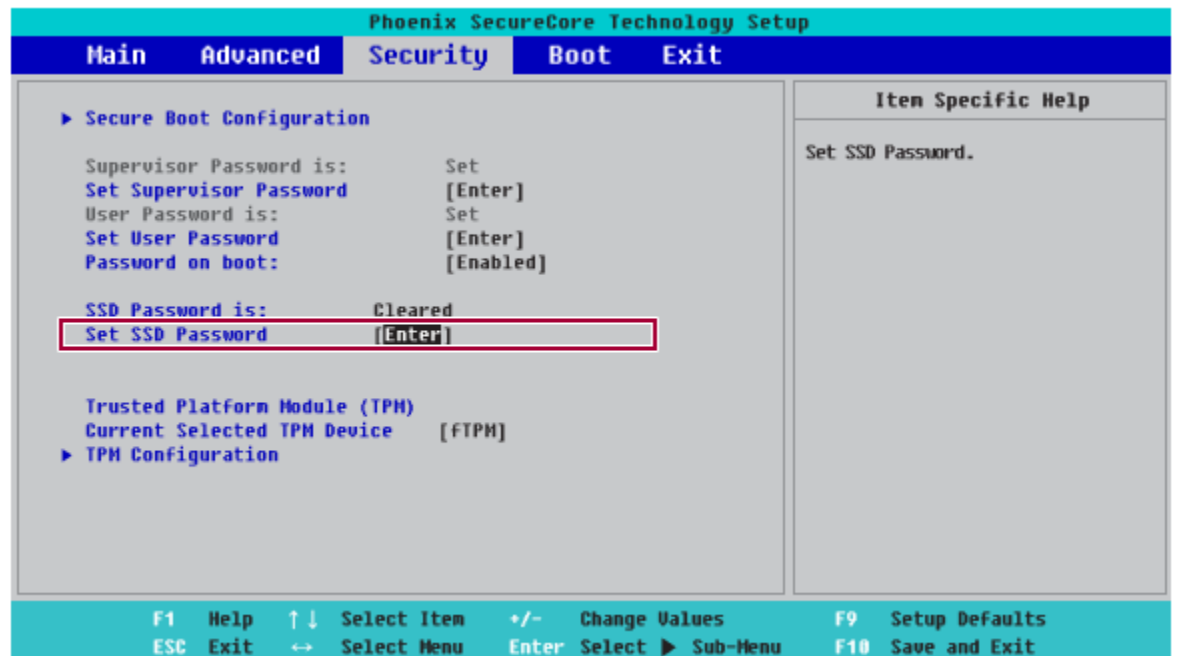
Set HDD Password / Set SSD Password

HDD / SSD Password is used to set a password in the HDD and SSD separately from the Supervisor Password.

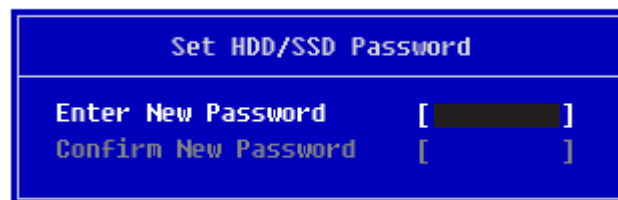
If you set both HDD Password and SSD Password, the password input screen appears twice during system booting.

If you set both HDD Password and SSD Password, the password input screen appears according to the order of [Boot Priority order] under the [Boot] menu.

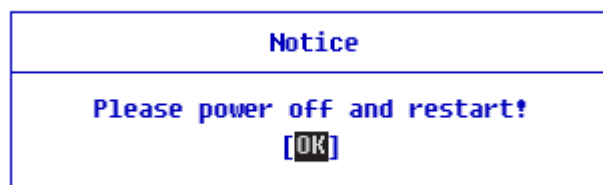
1. After opening the system setup screen, use the arrow keys to move to [Security].
2. When the following screen appears, select [Set Hard Disk Password] or [Set SSD Password] with the arrow keys and press [Enter].



- When the following message appears on the screen, enter the password and press [Enter]. The password must not exceed 8 characters consisting of letters (A - Z), numbers (0 - 9), or a combination of both.

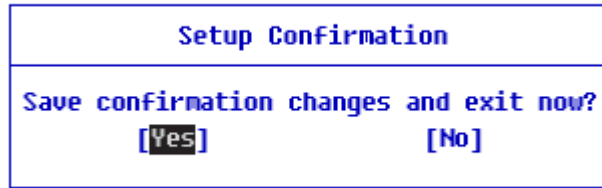


- When the following message appears, select and press [Enter].



- To save the changes in the system setup, press [F10].

- When the following message appears, select [Yes] and press [Enter]. The PC will restart.



Caution:

If you forget HDD / SSD Password, you cannot restore the HDD / SSD.

- The replacement of HDD / SSD due to a forgotten HDD / SSD Password is not covered by warranty.

Changing or Deleting the Password

You can delete or change the password only after entering the current password.

The model in the example can differ from actual models and is subject to change for performance improvements, without prior notice.

Changing the Password

- Execute System Setup, enter the password, and click [Enter].



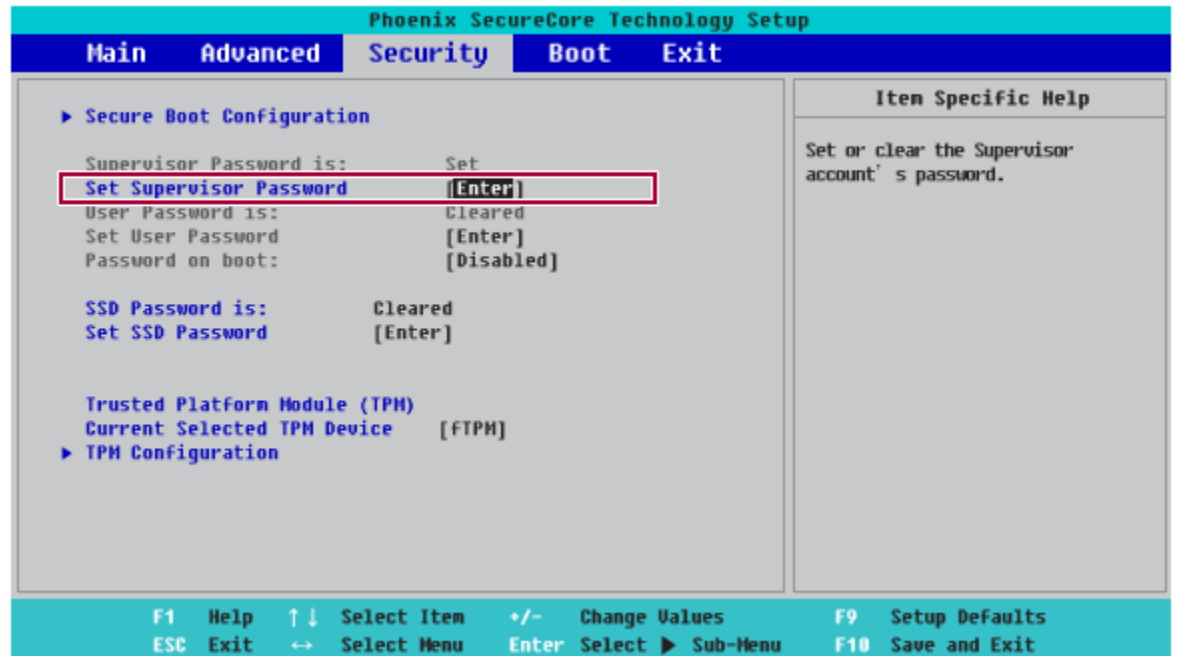
- Change the password in the same way as setting one.

Deleting the Password

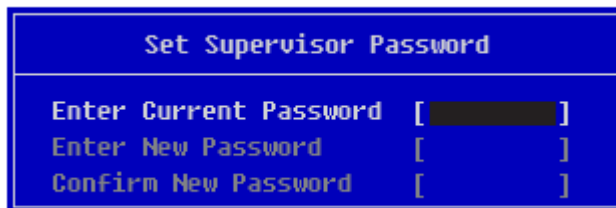
- Execute System Setup, enter the password, and press [Enter].



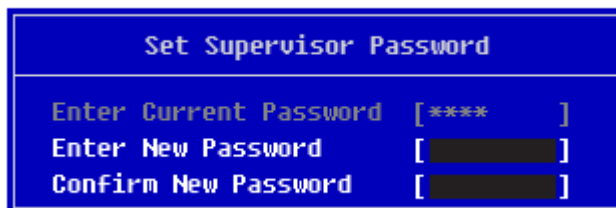
- After moving [Security] by using the arrow keys from the setup start screen, click [Set Supervisor Password] and press [Enter].



- When the following message appears, enter the current password in the [Enter Current Password] field.



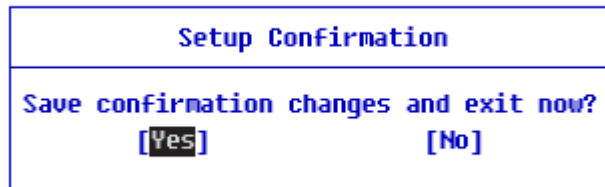
- Press [Enter] in [Enter New Password] and [Confirm New Password].



- When the following message appears, select and press [Enter].



6. To save the changes in the system setup, press [F10].
7. When the following message appears, select [Yes] and press [Enter]. The PC will restart.

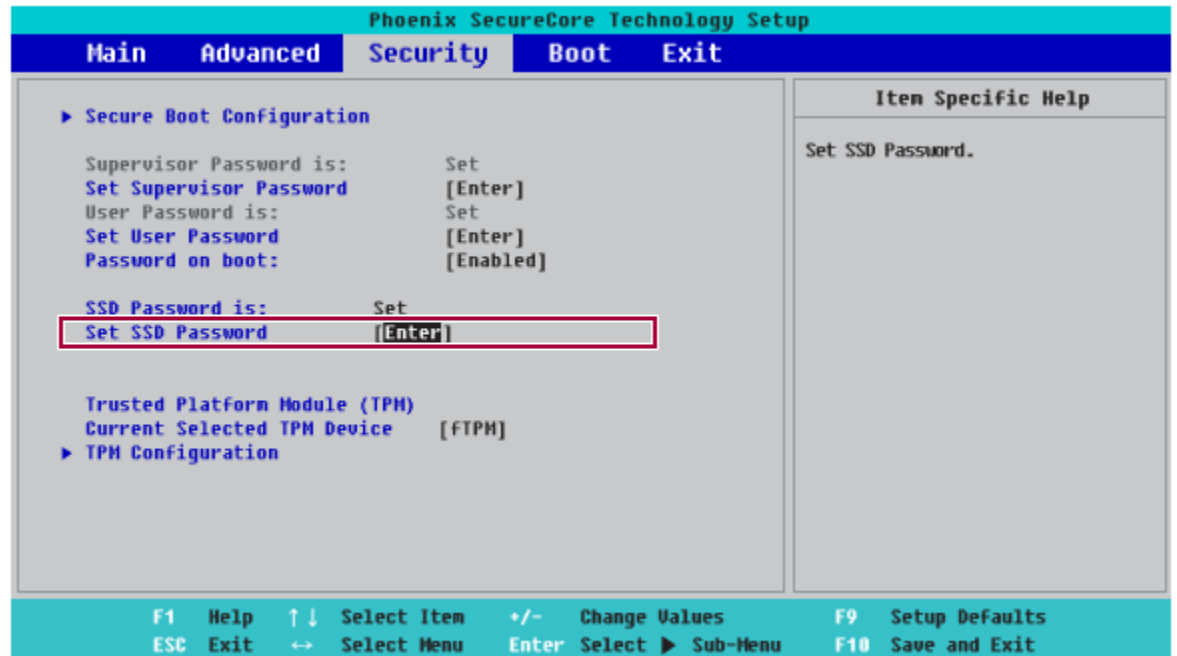


Deleting the Password (Set HDD Password / Set SSD Password)

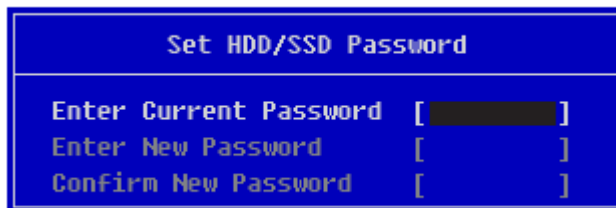
1. Execute System Setup, enter the password, and press [Enter].



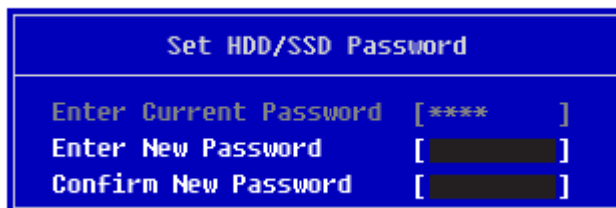
2. After moving to the [Security] menu by using the arrow keys from the System Setup screen, select [Set Hard Disk Password] or [Set SSD Password] and press [Enter].



- When the following message appears, enter the current password in the [Enter Current Password] field.



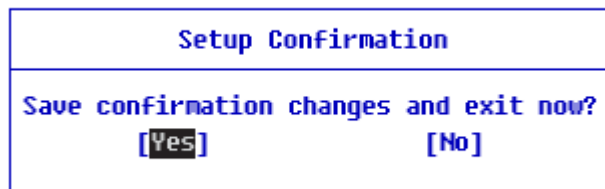
- Press [Enter] in [Enter New Password] and [Confirm New Password].



- When the following message appears, select and press [Enter].



6. To save the changes in the system setup, press [F10].
7. When the following message appears, select [Yes] and press [Enter]. The PC will restart.

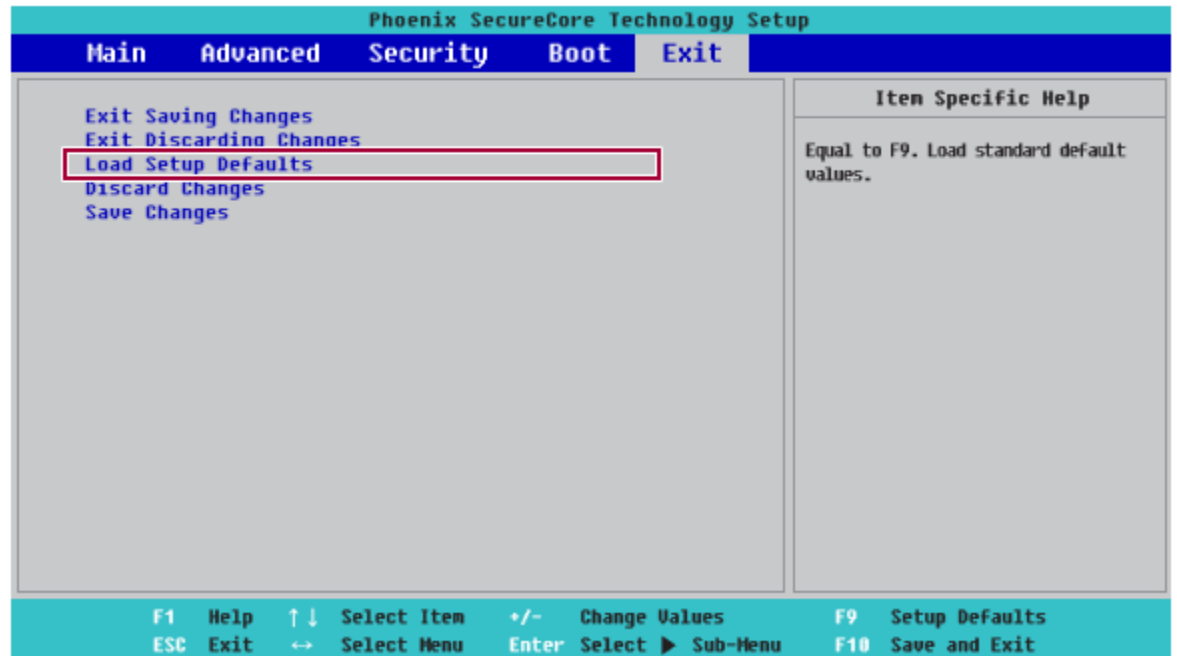


Restoring the Factory Default Settings

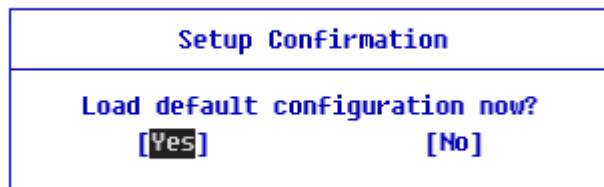
If you have changed the system setup by mistake, you can restore the default settings.

The model in the example can differ from actual models and is subject to change for performance improvements, without prior notice.

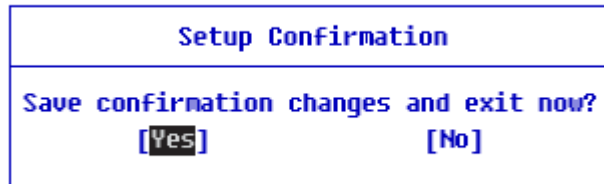
1. After opening the system setup screen, use the arrow keys to move to [Exit].
2. Click [Load Setup Defaults] by using the arrow keys and pressing [Enter].



- When the following message appears, select [Yes] and press [Enter]. The settings will be reset to the factory default.



- To save the changes in system setup, press [F10].
- When the following message appears, select [Yes] and press [Enter]. The PC will restart.



Tip:

- When you press [F9], you can use [Load Setup Defaults]

Changing the Boot Order

The user can change the boot order according to his or her needs, or select a boot device

The model in the example can differ from actual models and is subject to change for performance improvements, without prior notice.

Tip:

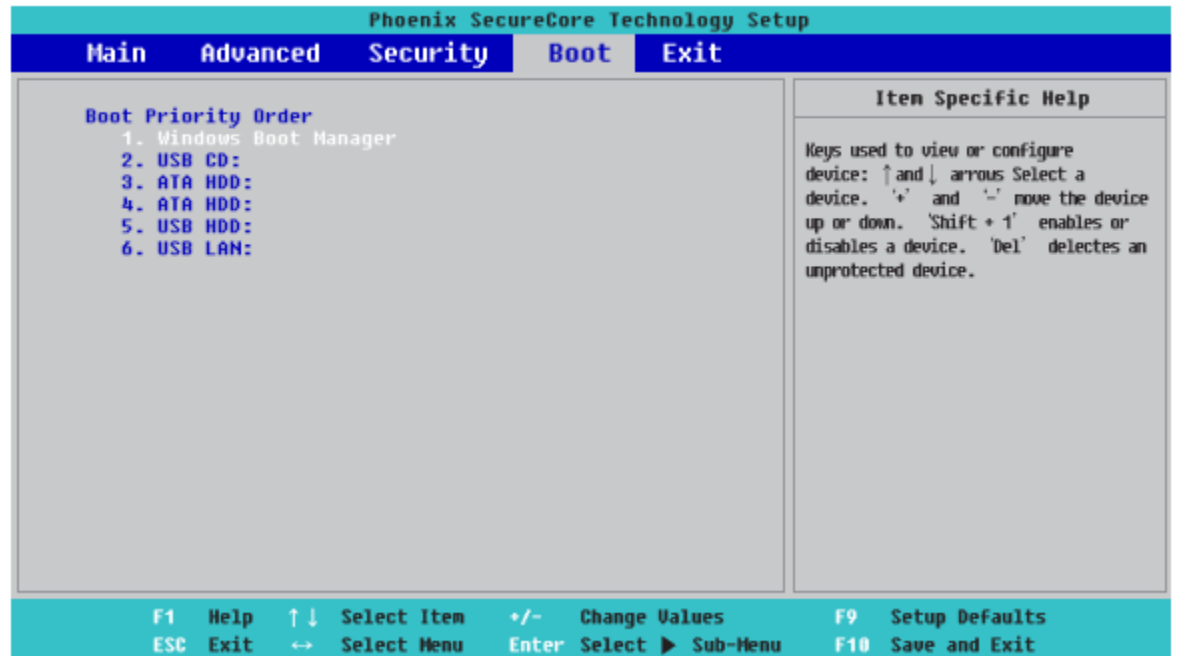
To use the system setup (F2), booting device selection (F10), or recovery (F11), you need to restart the system (click [Restart] in the system power menu) and then immediately press the corresponding function key due to the fast booting speed.

Changing the Boot Order

1. Reboot the system and press [F2].



2. Move to the [Boot] menu when the system setup screen appears.
3. Go to [Boot Priority Order] and press [F5] or [F6] to change the booting order.



4. When you press [F10] and the following screen appears, select [Yes] and press [Enter].



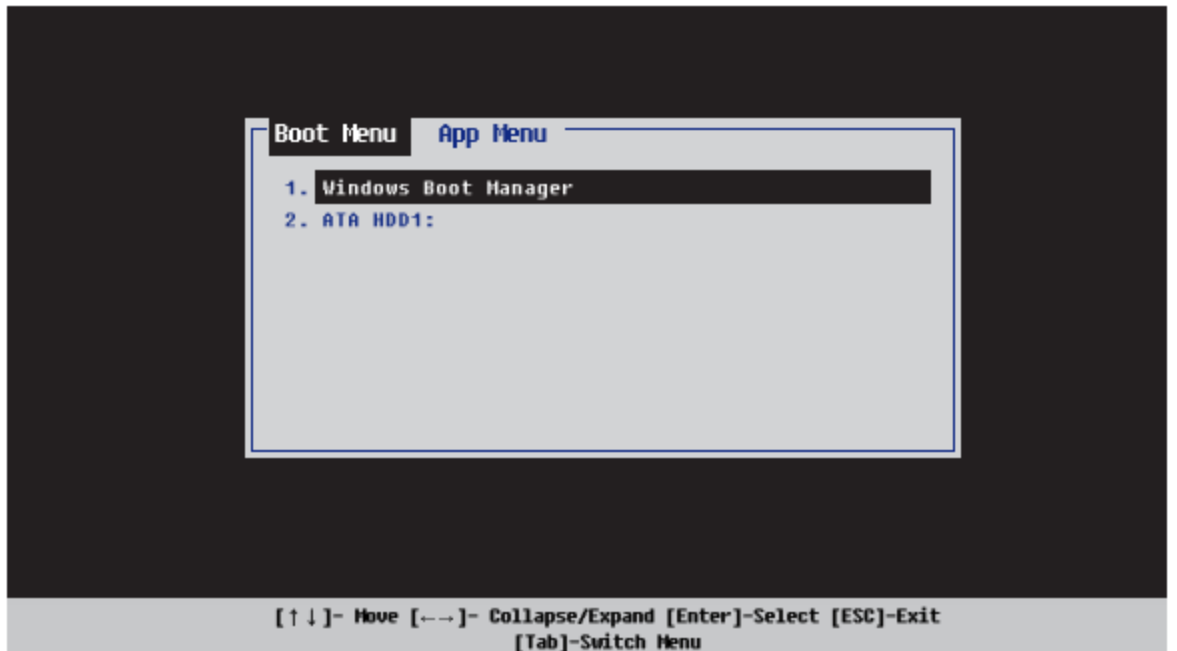
5. The changes are saved and the system reboots.

Selecting a Booting Device to Use

1. Reboot the system and press [F10].



2. When the Select Booting Device screen appears, select the device.



3. Boots using the selected device.

Windows 10 Auto Scaling

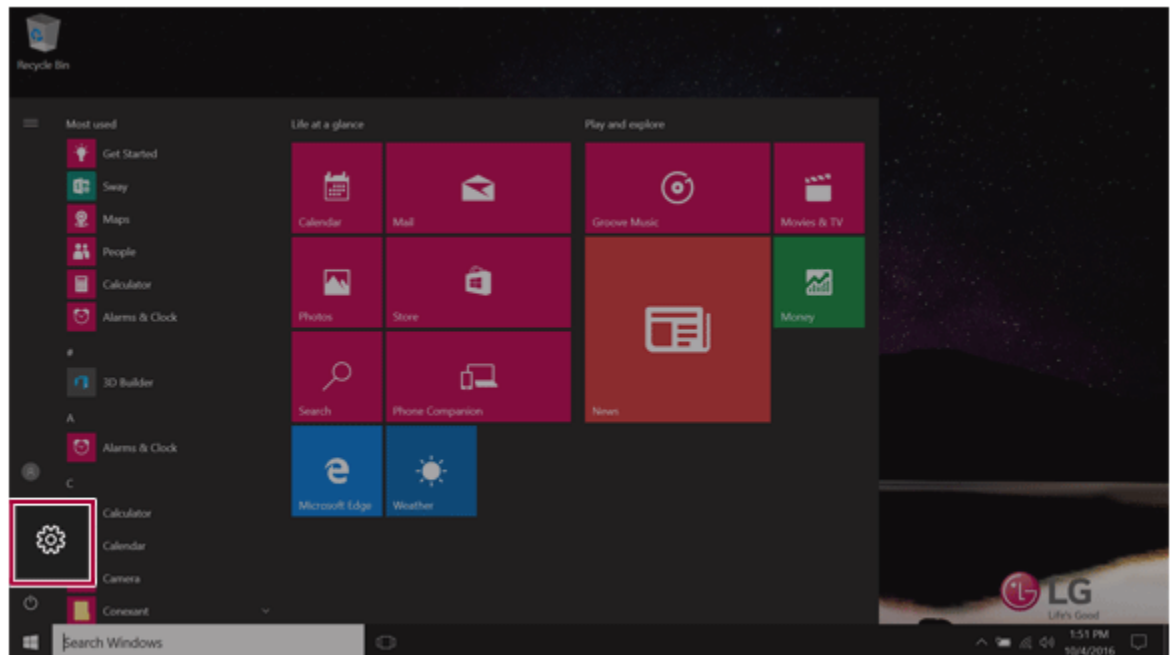
The Windows 10 Auto Scaling feature for user's convenience may partially blur the screen or display some icons and texts larger.

Refer to the following information to change the DPI scaling to suit your needs.

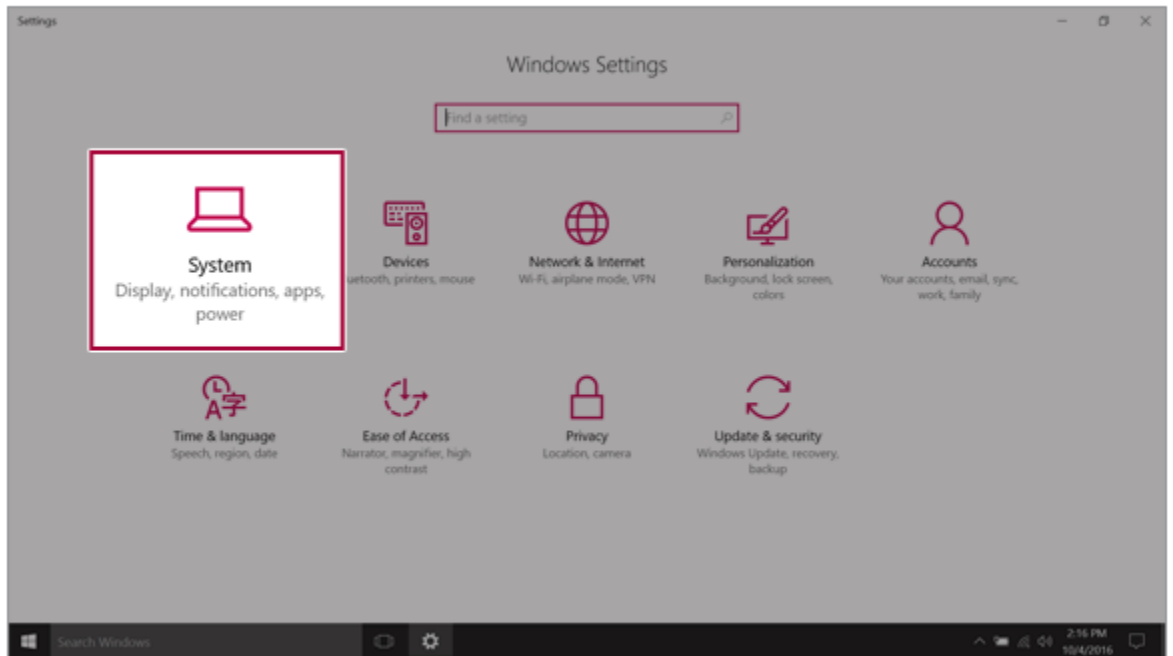
1. Press the [Windows] button and select the [Settings] menu.

Tip:

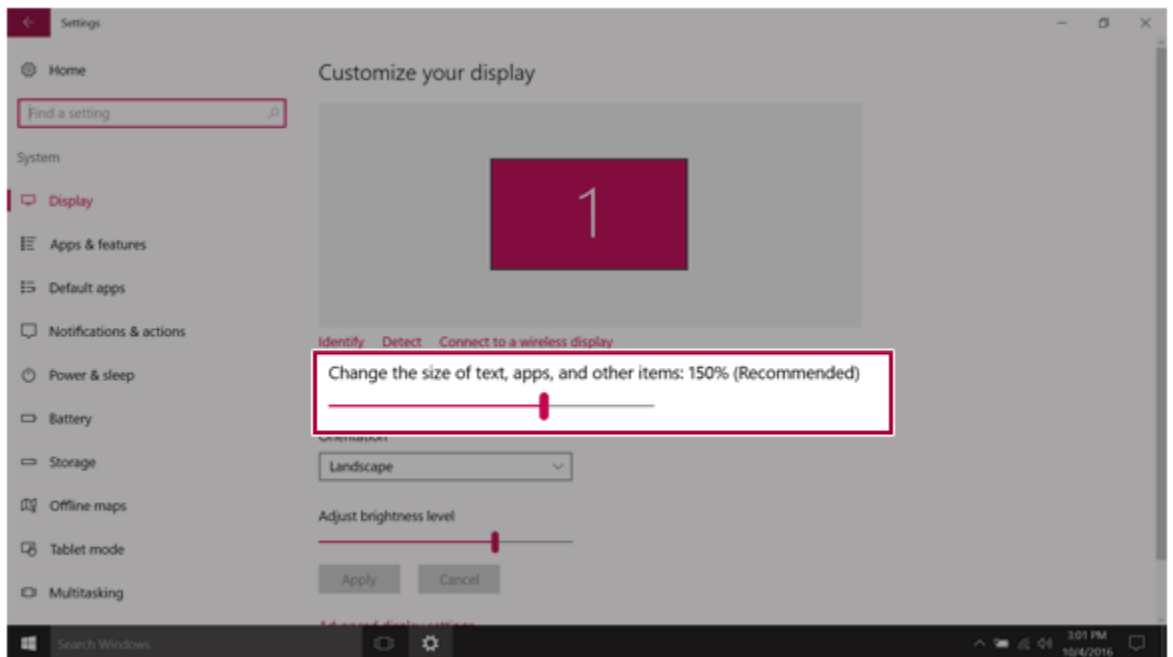
Press the [Windows] key or [Ctrl] + [Esc] to display the Start menu.



2. Select [System] > [Display].

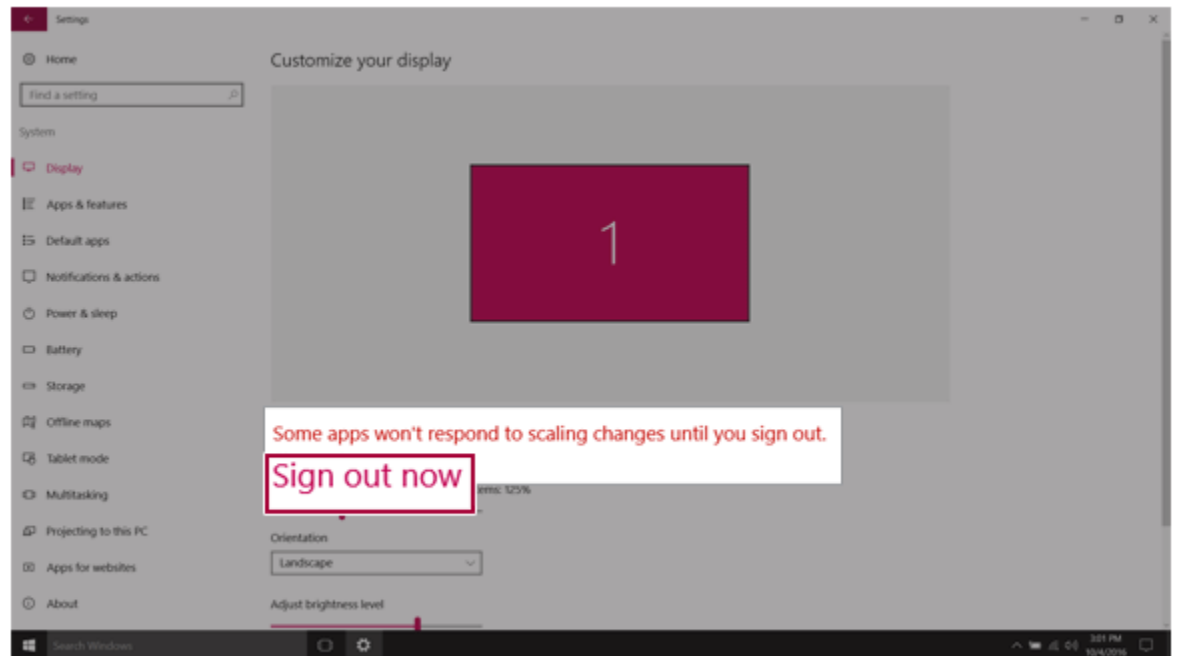


3. Changing the [Change the size of text, apps and other items.] value changes the auto scaling settings.




Tip:

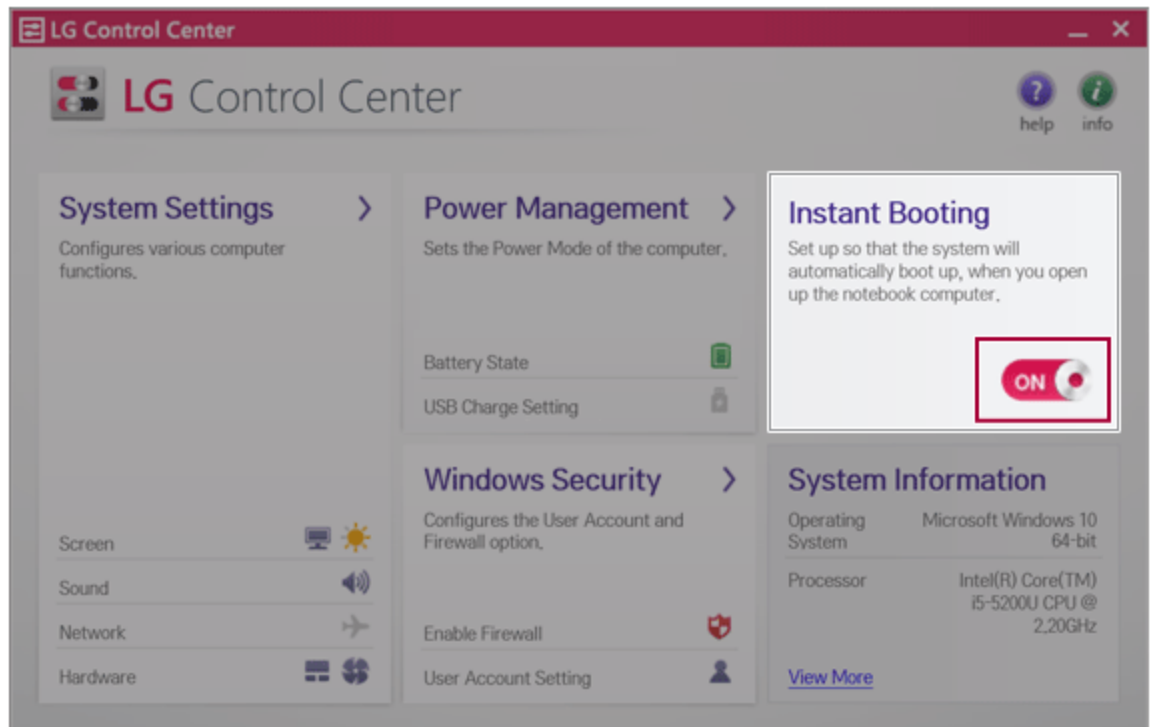
After changing the auto scaling settings, it is recommended that you click [Sign out now] and log on to Windows again.



Using Instant Booting

Instant Booting allows the system to boot automatically when the notebook PC cover is opened, so that you can use the system without pressing the power button.

1. Select the [] button > [LG Software] to run [LG Control Center].
2. On LG Control Center screen, set the [Instant Booting] to [ON].



3. Shutdown the system and close the notebook PC cover.
4. When the cover is opened, the notebook PC turns on and the system starts to boot automatically.