

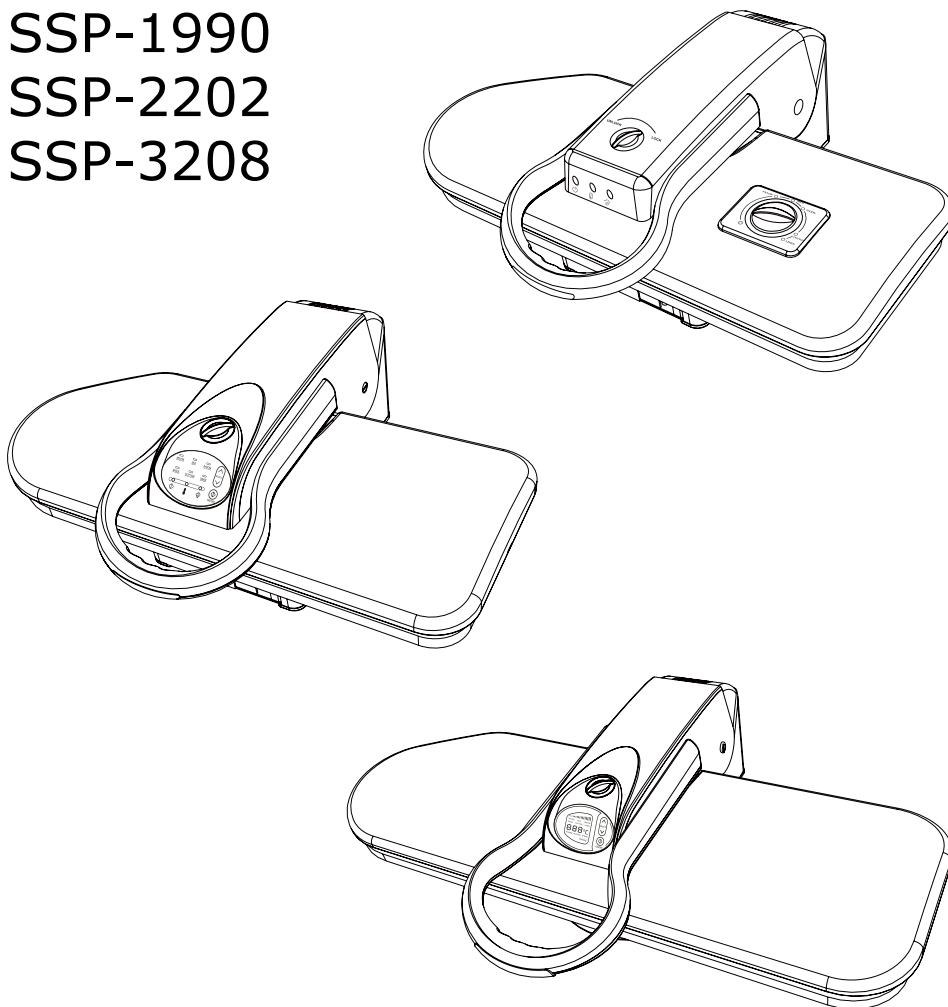
**sienna™**

## Espresso, Elite & Empressa Steam Press

SSP-1990

SSP-2202

SSP-3208



INSTRUCTION MANUAL

## INTRODUCTION

Thank you for choosing Sienna for your household pressing needs. With our consumers in mind, we have created steam press products that provide an affordable way to have a professional look without draining your wallet. You have begun the first step into saving time and money on trips to the cleaners. Our Sienna steam presses provide a clean, quality look with a pressing surface up to ten times larger than most hand-held irons. It boasts over 100 lbs. of even pressure to ensure sharp, long lasting creases. Our non stick coating on our pressing plate reduces starch build-up to ease cleaning. Our steam presses provide a locking handle making it portable and easy to store upright.

Please visit our website at [www.buysiennaproducts.com](http://www.buysiennaproducts.com) to view our whole line of Sienna products.

### **Espresso**

The Espresso Steam Press is an innovative product that allows you to have a professional look right from your own home. This steam press is well-suited to take out wrinkles from an assortment of fabrics. It will heat up to your desired temperature and works quickly and efficiently. The Espresso steam press creates a continuous even heat so that your clothes are pressed uniformly. The user-friendly design is intended for those who are looking for an easy, no non-sense way to press your clothes. It features a 10.2 fl oz water tank, temperature control dial that reaches a maximum of 410 degrees, an auto shut-off feature and much more.

### **Elite**

The Elite Steam Press is the Espresso model with a personal touch. The Elite allows you to press your items in half the time and is seven times larger than the size of a traditional iron allowing you to do your ironing in half the time. It features an LED digital control panel for more customized pressing. There is a fabric button that allows you to choose your desired fabric setting. Choose between silk, polyester, wool, cotton and linen to satisfy your pressing needs. Much like the Espresso, it has the same water tank size and can reach the same maximum temperature of 410 degrees.

### **Empressa**

The Empressa Steam Press is the largest model with a substantial surface area for pressing that is up to ten times larger than a traditional iron and reduces pressing time by 75 percent. This model features an LED digital control panel that allows you to pick your desired settings. The larger surface area is a consumer choice as it aids in saving time pressing your clothing. The non-stick, hi-tech woven press cover along with the non-stick pressing plate combine help to gently press all types of fabrics. It features a 1350 watt heating element, 15.2 fl oz water tank and much more.

## SAFETY GUIDELINES

The Sienna Espresso (SSP-1990), Elite (SSP-2202) and Empressa (SSP-3208) Steam Presses are for indoor domestic use only. Any commercial use will void warranty. They are designed for pressing garments and not intended for any other use.

Safety Instructions:

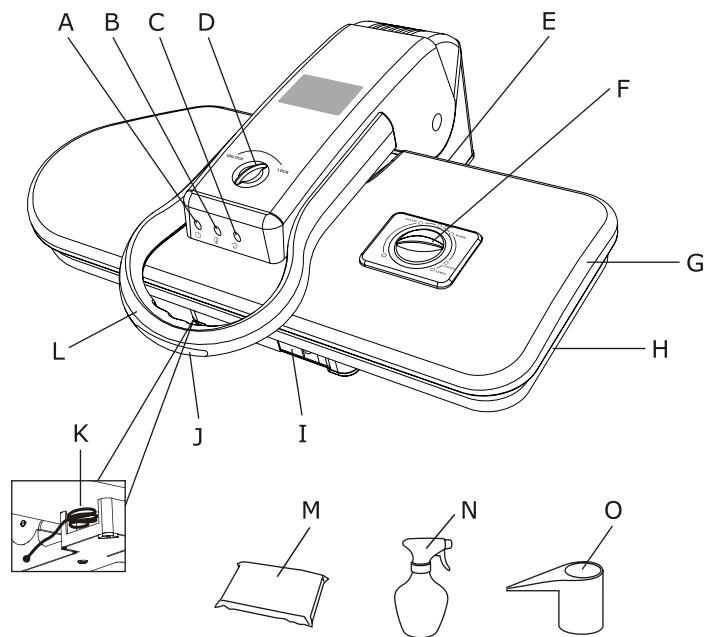
**WARNING: Be sure to read and follow all safety instructions before using your steam press. Proper care and maintenance will help to expand the life of your press.**

When using an electrical appliance, basic precautions should always be followed. To reduce the risk of fire, electric shock, or injury:

- Be sure to unplug the electrical cord when appliance is not in use and while servicing.
- Do not leave the press unattended while young children, pets or infirm persons are around.
- Be sure to place the press on a secure level surface when in use.
- Children should be supervised and cautioned that the press is not a toy and should not be played with.
- Do not immerse the press in water or other liquids.
- Do not handle press with wet hands.
- Do not pull power cord to disconnect appliance from socket or use cord as a handle.
- Be sure to keep cord away from heat, water, and sharp edges.
- Do not use if cord or plug is damaged.
- Do not use extension cords or outlets with inadequate current carrying capacity.
- Use only as described in manual. Operating unit in any way other than recommended may result in damage to unit or injury to operator.
- Do not disassemble unit or attempt to make any repairs yourself. Incorrect assembly or repair could result in a risk of fire, electric shock, or injury to persons when operating.
- Stop using press if circuit breaker activates. Beware of risk of shock.
- Always allow your press to cool down for at least 30 minutes before storing in a cool, dry place.

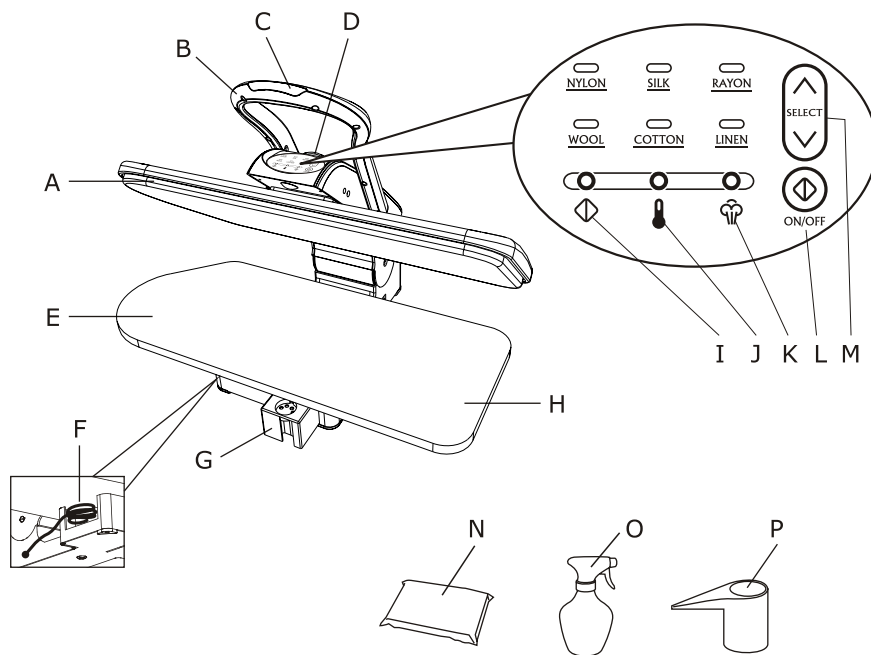
## EXPRESSO KEY FEATURES

- A. POWER INDICATOR LIGHT
- B. READY LIGHT
- C. STEAM READY LIGHT
- D. LOCKING KNOB (USE WHEN STORING UNIT)
- E. ON/OFF SWITCH
- F. TEMPERATURE CONTROL DIAL
- G. PRESSING PLATE
- H. IRONING BOARD
- I. WATER TANK
- J. STEAM BURST BUTTON
- K. CORD STORAGE COMPARTMENT
- L. PRESSING HANDLE
- M. PRESSING CUSION
- N. SPRAY BOTTLE
- O. WATER CONTAINER



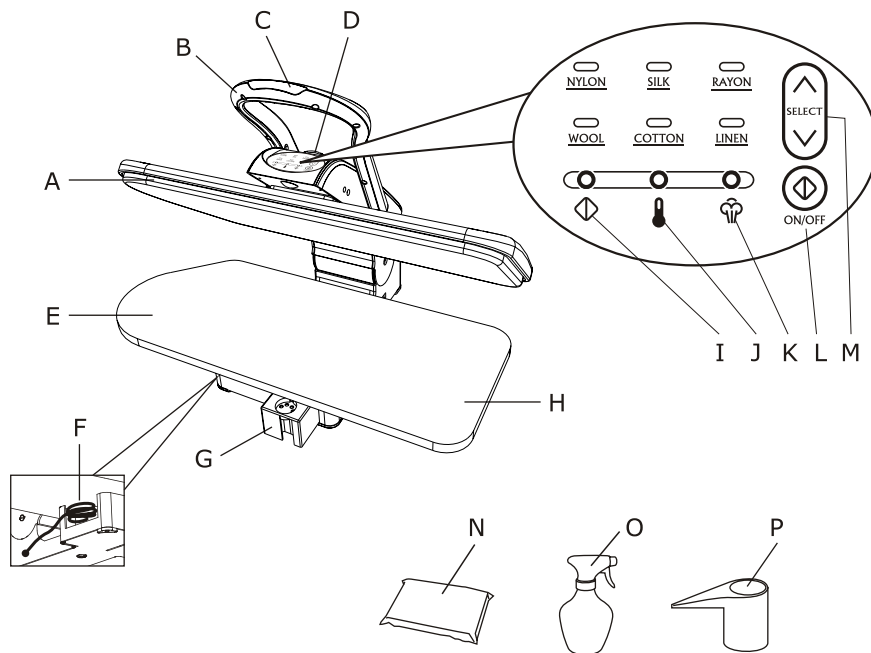
## ELITE KEY FEATURES

- A. PRESSING PLATE
- B. PRESSING HANDLE
- C. STEAM BURST BUTTON
- D. LOCKING KNOB (USE WHEN STORING)
- E. IRONING BOARD COVER
- F. CORD STORAGE COMPARTMENT
- G. WATER TANK
- H. IRONING BOARD
- I. POWER LIGHT (RED)
- J. READY LIGHT (GREEN)
- K. STEAM READY LIGHT (YELLOW)
- L. POWER ON/OFF BUTTON
- M. FABRIC TEMPERATURE SELECTION
- N. PRESSING CUSHION
- O. SPRAY BOTTLE
- P. WATER CONTAINER



## EMPRESSA KEY FEATURES

- A. PRESSING PLATE
- B. PRESSING HANDLE
- C. STEAM BURST BUTTON
- D. LOCKING KNOB (USE WHEN STORING)
- E. IRONING BOARD COVER
- F. CORD STORAGE COMPARTMENT
- G. WATER TANK
- H. IRONING BOARD
- I. POWER LIGHT (RED)
- J. READY LIGHT (GREEN)
- K. STEAM READY LIGHT (YELLOW)
- L. POWER ON/OFF BUTTON
- M. FABRIC TEMPERATURE SELECTION
- N. PRESSING CUSHION
- O. SPRAY BOTTLE
- P. WATER CONTAINER



## ASSEMBLY AND USE

- 1) Set press on a flat, level surface.
- 2) Turn Locking Knob dial to "unlock" and lift the Pressing Handle to open the press. The press will automatically stay in lifted position.
- 3) Before plugging in the press, fill the Water Tank using the Water Container provided. Slide the Water Tank forward and pouring the water into the holes of the tank. When finished, slide the tank back into place. Water is only necessary when using Steam Burst Button.



**NOTE: When filling the Water Tank, distilled water is preferred, but not necessary.**

**NOTE: The Water Tank is not removable. It is designed to store any left over water from use. Do not attempt to force it free.**

- 4) Plug in and press Power On/Off Button/Switch. A Power Light (Red) will appear (Yellow for Espresso only). Be sure Pressing Plate is in open position when unit is initially turned on.
- 5) Select desired temperature and allow press to heat before use. Turn Temperature Control Dial (Espresso model only) or use Fabric Temperature Selection arrows (Empressa and Elite models) to choose fabric setting. It may take a few minutes to reach chosen temperature when decreasing or increasing settings.

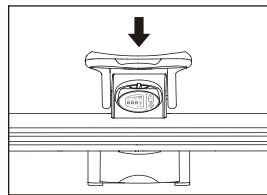
**NOTE: It takes approximately 4 minutes for the press to reach the Linen temperature.**

FABRIC	NYLON	SILK	RAYON	WOOL	COTTON	LINEN
	100 °C	130 °C	140 °C	160 °C	200 °C	210 °C
	212 °F	266 °F	284 °F	320 °F	392 °F	410 °F
STEAM	NO	NO	NO	YES	YES	YES

**Warning: During initial use or after a long period of time without use, press the Steam Burst Button continuously for several seconds to clear Pressing Plate of residual water or calcium buildup in system before use.**

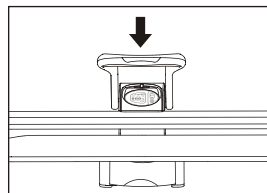
**CAUTION:** Be sure to examine garment label before selecting a fabric setting. If you cannot determine a fabric type, select lowest setting and increase as needed. It is best to start with the most delicate fabrics first to avoid damage to your fabric.

- 6) A Ready Light (Green) will appear once press has reached desired temperature allowing you to start pressing. Be sure to use provided Pressing Cushion to flatten out gathered areas such as sleeves, darts and yokes. If needed, use Spray Bottle for dampening fabric before pressing.
- 7) Pull down Pressing Handle and press the Pressing Plate and the Ironing Board together. Hold for a few seconds, then lift to separate the Pressing Plate and Ironing Board.



**IMPORTANT:** Press On/Off Button to cancel your selected pressing cycle.

- 8) To use steam, adjust the Fabric Temperature Selection to the Wool, Cotton or Linen settings. The Steam Ready Light (yellow) will appear and you will be able to press the Steam Burst Button for steaming your garments.
- 9) Pull down Pressing Handle directly above garments about 1 to 2 inches above fabric and press Steam Burst Button. Press garment. DO NOT activate Steam Burst Button with unit completely closed; you may damage your press.



**CAUTION:** Do not hold down press for longer than 5 seconds. If using Steam Burst Button, do not fully close press down onto fabric. If you hold down the press for too long, you may cause your garments to wrinkle because they have gotten too hot. If this should happen, spray down garment with water and start over.

**CAUTION:** When using steam, do not hold Steam Button for longer than 3 seconds. If steam is used for too long, you will cause the press to drop dramatically in temperature and will have to wait for it to reach the initial desired setting. The drop in temperature cannot be avoided as the burst of steam cools down the Pressing Plate instantly. By using steam in short bursts, you will help to eliminate the dramatic temperature drop and thus be able to press quicker and more efficiently.



**Auto Shut-off and Auto Wake-Up:**

E1: A warning beep (and E1 warning will appear on the digital display for Empressa model only) will signal if the Pressing Plate is left in a closed position against the Ironing Board for more than 10 seconds. The press will stop heating and the Auto Shut-off feature will initiate unless the Pressing Plate is restored to the lifted position. The Auto Wake-Up feature will then kick in. In some cases, you will need to either turn press off and then on again or unplug then re-plug the unit in to reset function.

**CAUTION: Do not lock Pressing Plate and Ironing Board together as a beep and/or an E1 warning will appear and press will begin to beep. Only lock when storing.**

E2: A warning beep (and E2 warning will appear on the digital display for Empressa model only) will signal if the pressing plate is left in lifted position without use for approximately 10 minutes. The press will stop heating and Auto Shut-off feature will engage. In order to restore use, simply press On/Off Switch or press Temperature Control buttons to reset press.

**IMPORTANT NOTE: If you forget to raise the Pressing Plate or become distracted, the machine will give a warning beep then automatic shut-off feature will initiate and/or an E2 warning will appear. The steam press will be completely shut-off after about 10 minutes of no activity with the press in the open position.**

**Warning: During initial use or after a long period of time without use, press the Steam Burst Button continuously for several seconds to clear Pressing Plate of residual water or calcium buildup in system before use.**

**NOTE:** Some garments have details such as darts, curved seams, and shoulder pads which should not be pressed flat. Use Pressing Cushion provided for use in these areas.

**Warning: Do not attempt to lower the Pressing Plate to its lowest position or lock the press with the Pressing Cushion in between. You may damage your press by doing so.**

## BASIC IRONING

Tablecloth:



Fold the length of fabric in either half or thirds and place on the Ironing Board.

Accordion pleat the length on the Ironing Board and move the pleated item into the large open space behind the Ironing Board.



Move the tablecloth towards you, then press. Continue moving forward until the entire item is pressed. To store, fold it, place it on the Ironing Board and close the press. Apply mini-pressure. If necessary, refold the tablecloth to press any areas that were hanging off the sides of the Ironing Board. Repeat the pressing procedure.

#### Pants:



**Waistband-** Place the top of pants on the press. Press the Pressing Board down over the pants to the Ironing Board. If using Pressing Cushion, Place the waistband of the pants around the board on top of cushion. Arrange pleats. Rotate pants to press entire waistband.  
**Side Pockets-** Slide pockets over the Pressing Cushion over the Pressing Board then press.



**Crotch Area-** Place the inside of the crotch area on the board facing up. Align with the slanted left side of the board. Press.



**Legs-** Place top of pant leg half way on the Ironing Board. Press front crease. Then, place bottom of the pant leg half way on the Ironing Board. Allow the hem or cuff to hang off the end of the board. Press. Follow the same method for pressing back crease.

**Note:** The hems of the pants can be pressed by placing them both on the Ironing Board and applying a small amount of pressure.

#### Shirt and Blouses:

**Yoke-** Arrange the shoulders around the slanted left side of the board. Let the collar hang off the edge. Press.

**Cuffs-** Place the cuffs and plackets around the edges of the Ironing Cushion. Arrange any pleats. Press.



**Sleeves-** Place the garment to the left side of the press with the collar towards you. Place the first sleeve on the Ironing Board with the curve of the garment fitted to the slanted left side of the board (the second sleeve will lay in front of the press off the board). Press. Remove first sleeve and place second sleeve on the board. Press.

**Body-** Put the sleeves together and fold the shirt in half. Place it at the back of the Ironing Board away from you, extending the sleeves behind the board on the right. Bring the shirt front with the buttons forward first. With your right hand, hold the collar so that the curved edge of the neck opening is flat against the Ironing Board. Do not release the collar until you have lowered the Pressing Plate. Press. Keep pulling the shirt forward until you have worked the whole way around.



Collar- Place the collar on the board, spray and press.  
Fold the collar in half, spray and press.  
Shirt Tail- Button the garment and place shirt tail squarely on the Ironing Board. Press. Hang the shirt on a hanger, or fold it. It is a good idea to let it cool before folding. Use the Ironing Cushion to retouch any area.

Hint: Use this same procedure on other fitted garments such as blouses, fitted shirts, jackets, etc.

#### T-shirt:

Place t-shirt flat on the Ironing Board. Depending on shape, begin with the sleeves.

Note: If your t-shirt has rhinestones or an application on it, press with decorated side face down on the board or turn it inside out.

#### Pleated Skirt:

Place Pressing Cushion under waistband and press. Rotate skirt until entire waistband is pressed.

Slip the skirt over the board. Arrange the pleats. Press. Pleats may need to be pinned to the Ironing Board Cover. Do not use plastic head pins when using the press. Rotate skirt until all pleats are pressed.

#### Jacket:

Sleeves without creases- Fold the sleeve on the seam line and place the seam line flat on the board. Allow the top edge of the sleeve to hang off the edge of the board.

Press.

Lapels- Place lapels flat, diagonally on the Ironing Board. Press. Use Ironing Cushion if needed.

#### Ties and Ribbons:



Place the tie lengthwise on the board. Press. You can also place them horizontally on the board and close the press them pull tie or ribbon through it.

## STORING AND MAINTENANCE

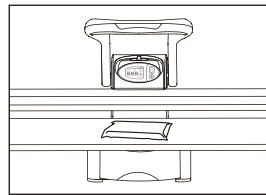
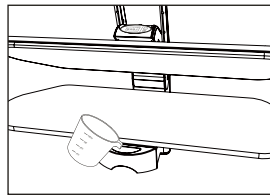
**CAUTION:** Prior to storing or maintaining your steam press, isolate the unit by removing the cord from the power socket and avoid immersing the unit in water.

- 1) Water may be left in Water Tank reservoir; however, it is recommended that if the machine will be stored for a long period of time, any left over water in the unit should be drained by pressing the Steam Burst Button before the end of use until the Water Tank is emptied.
- 2) Wait approximately 30 minutes for press to cool down before storing. Once cooled, lower the Pressing Plate onto the Ironing Board; pull down Pressing Handle completely, then turn Locking Knob to locked position.
- 3) Loosely wrap electrical cord and place it in the Cord Storage Compartment located at the left of the Water Tank on the base of the Ironing Board.
- 4) Wipe steamer with soft cloth when/if necessary.
- 5) Store in a cool, dry place.

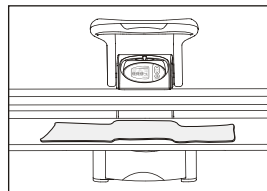


## CLEANING

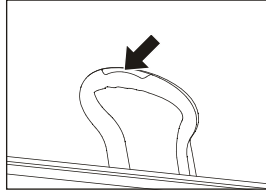
- 1) Fill Water Tank using Water Container Provided.
- 2) Place the Pressing Cushion in the center of the Ironing Board.



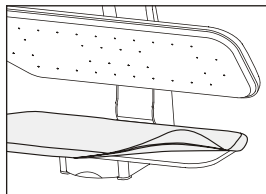
- 3) Place a clean towel over the Pressing Cushion and the Ironing Board.
- 4) Set the Fabric Temperature Selection control to the highest setting (linen). When the Steam Ready Light illuminates, gently lower the Pressing Plate onto the Pressing Cushion.



- 5) Press the Steam Burst Button 6 to 7 times. Be careful to avoid touching the hot metal surfaces and avoid leaving hands under Ironing Pressing when using the Steam Burst Button.



- 6) Once the pressing plate has cooled down you can clean the surface with a damp cloth. DO NOT use any abrasives on the Pressing Plate. This Pressing Plate has a non-stick coating that will assist in cleaning.
- 7) The Ironing Board Cover is removable and can be rinsed with mild detergent and warm water. You may purchase replacement covers on our website at: [www.buysiennaproducts.com](http://www.buysiennaproducts.com).



### Product Specs:

**Espresso****Voltage supply:** 120, 60 Hz**Output:** 1350 W**Water capacity:** 10.2 fl oz.**Cord:** 16.4 ft.**Weight:** 19.8 lbs.**Elite****Voltage supply:** 120, 60 Hz**Output:** 1350 W**Water capacity:** 10.2 fl oz.**Cord:** 16.4 ft.**Weight:** 22 lbs.**Empressa****Voltage supply:** 120, 60 Hz**Output:** 1350 W**Water capacity:** 15.2 fl oz.**Cord:** 16.4 ft.**Weight:** 28.6 lbs.

## TROUBLESHOOTING

**CAUTION:** Prior to using or maintaining your steam press, isolate the unit by removing the cord from the power socket.

PROBLEM	SOLUTION
LED is not on	<ul style="list-style-type: none"><li>• Ensure press power cord is correctly plugged into a 120V AC power outlet only.</li><li>• Ensure circuit breaker is operational.</li><li>• Try operating press from another power outlet.</li></ul>
No heat	<ul style="list-style-type: none"><li>• Make sure temperature has been selected.</li><li>• Pressing Plate has been left in raised position for more than 10 minutes and automatic shut-off has engaged.</li></ul>
No steam	<ul style="list-style-type: none"><li>• Water may be low, refill Water Tank.</li><li>• Temperature setting is too low to activate steam. Select a higher temperature and wait for Ready Light to illuminate before steaming.</li></ul>
Buttons are not working properly	<ul style="list-style-type: none"><li>• Unplug the unit from the power outlet for 5 minutes then plug back in.</li></ul>
E1 Warning	<ul style="list-style-type: none"><li>• The pressing plate and ironing board have been held together for too long. Separate the plate from the board and either unplug your unit then plug back in or turn the press off then on again to restart the unit.</li></ul>
E2 Warning	<ul style="list-style-type: none"><li>• Automatic shut off feature warning. If the press is left for too long unused, a beep and warning will appear. After 10 minutes of no use, the press will automatically shut off.</li></ul>
Steam Burst output is weak	<ul style="list-style-type: none"><li>• Pressing Plate needs to be cleaned. Refer to Cleaning section of the manual for proper procedure.</li></ul>

## CUSTOMER SUPPORT

For problems with your Sienna Steam Press, please refer to Troubleshooting guide. Additional inquiries should be directed to our Customer Service department by calling 1-888-574-3662 or by e-mail to: [customerservice@anvidproducts.com](mailto:customerservice@anvidproducts.com).

## **ONE YEAR LIMITED WARRANTY**

Our Sienna product warranty extends only to the original customer purchaser of the product. It is warranted by the manufacturer to be free from all defects in materials or workmanship for a period of one year from the date of original purchase. This warranty is subject to the following conditions, exclusions and exceptions.

### **Exclusions:**

This warranty does not cover normal wear and tear of parts and does not apply to any product that has been tampered with or used for commercial purposes. This warranty does not cover damage caused by misuse, abuse or negligent handling or damage due to mishandling in transit or shipping. This warranty does not cover damage or defects caused by or resulting from repairs, service or alterations to the product or any of its parts, which have been performed by a repair person not authorized by the manufacturer. This warranty is effective only if the product is purchased and operated in the USA or Canada, and does not extend to any units which have been used in violation of written instructions furnished by the manufacturer, or to units which have had the serial number removed, altered, defaced or rendered illegible.

### **Performance:**

During the limited warranty period, the manufacturer will, at its option, repair or replace free of charge a defective product or part that is covered by this warranty. As a matter of warranty policy, the manufacturer will not refund the purchase price. A repaired or replacement product will be covered by this warranty for the balance of the initial one year warranty period.

### **To contact Customer Service:**

Write: Anvid Products, Inc.  
1401-1499 Greenville Rd.  
Livermore, CA 94550

E-mail: [customerservice@anvidproducts.com](mailto:customerservice@anvidproducts.com)

Call: 1-888-5SIENNA (1-888-574-3662)

Please refer to your product name and model number when contacting Customer Service.

Customer Service will give you further instructions for returning a defective product for repair or replacement. When returning a defective product, carefully pack the item to avoid damage in shipping, the manufacturer cannot assume responsibility for loss or damage during incoming shipment. We recommend that you insure the package, as damage in shipping including the shipping cost is not covered under our warranty. Be sure to include the following items with your product: any accessories related to the product, your name, complete address and phone number, a note describing the problem you experienced, and a copy of your sales slip or other proof of purchase to determine warranty status. C.O.D. shipments cannot be accepted.

Limitations of Remedies: No representative or person is authorized to assume for the manufacturer any other liability in connection with the sale of our products. This limited warranty is not transferable and any sale, transfer or other disposition of the product voids this limited warranty. There shall be no claims for defects or failure of performance or product failure under any theory of tort, contract or commercial law including, but not limited to, negligence, gross negligence, strict liability, breach of warranty and breach of contract.

**ANY IMPLIED WARRANTIES, OBLIGATIONS, OR LIABILITIES, INCLUDING, BUT NOT LIMITED TO, THE IMPLIED WARRANTY OF MERCHANTABILITY AND FITNESS FOR A PARTICULAR PURPOSE, SHALL BE LIMITED TO THE DURATION OF THIS WARRANTY.** Some states do not allow limitations on how long an implied warranty lasts, so the above limitations may not apply to you.

**REPAIR OR REPLACEMENT SHALL BE THE SOLE REMEDY OF THE PURCHASER UNDER THIS LIMITED WARRANTY, AND IN NO EVENT SHALL THE MANUFACTURER BE LIABLE FOR ANY SPECIAL, INCIDENTAL, OR CONSEQUENTIAL DAMAGES, LOSSES OR EXPENSES YOU MAY INCUR IN CONNECTION WITH YOUR PURCHASE OR USE OF THE PRODUCT OR FOR ANY BREACH OF THIS OR ANY OTHER WARRANTY, EXPRESS OR IMPLIED, WHATSOEVER.** Some states do not allow exclusion or limitation of special, incidental, or consequential damages, so the above limitation may not apply to you. This limited warranty gives you specific legal rights, and you may also have other rights which vary from state to state.