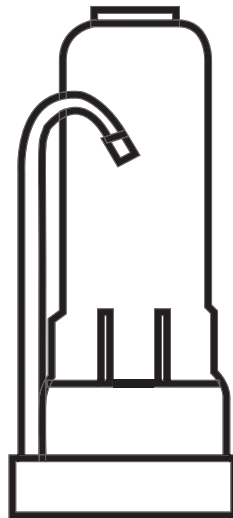




Tabletop filter  
for tap water purification



Dear customer!

Thank you for choosing our products.

We want you and your family to enjoy pure drinking water. With Ecosoft filter you will forget the trouble of using large bottles. Pure spring water for drinking, cooking and making beverages will always be at hand. Please read this instruction manual and check validity of the warranty card before using the system.

Bob was developed by Ecosoft international R&D team. We created it for design connoisseurs who enjoy the taste of morning coffee on pure water and an active lifestyle. Ecosoft is a large international company, producing a full range of water filters.

## Guide to using your Ecosoft filter

The filter is designed only for purification of cold water!

Do not exceed the recommended water flow rate of 1 L/min (0.25 gpm), or water purification efficiency might decrease.

Do not use disposable cartridges longer than recommended service life (or exceed total of purified water amount).

Feed water quality may significantly affect cartridge capacity and purification efficiency.

## Installation

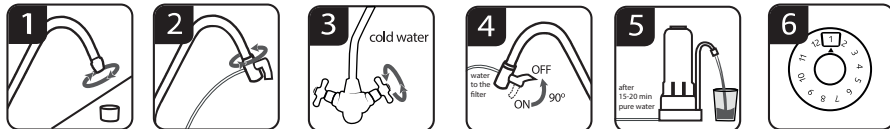
To activate the filter leave it switched on for 15-20 min. Repeat the procedure when the filter was not in use for 10 days or longer.

The filter is ready!

**ATTENTION!**

The product should be used only for purification of cold water!

Recommended flow rate is 1 L/min (0.25 gpm) or less.



## Replacing the cartridges

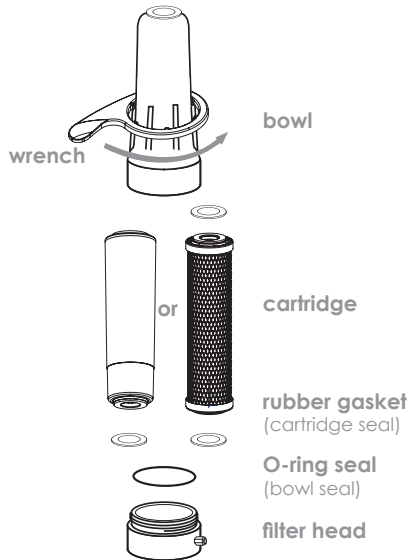
Procedure of replacement of cartridge is explained below.

1. Wash your hands thoroughly with antibacterial soap.
2. Sanitize surfaces that you will use while handling cartridge.
3. Unscrew filter bowl with a wrench. Take care as the bowl is filled with water.
4. Remove the used cartridge.
5. Wash the filter bowl thoroughly.
6. Put the new cartridge into the bowl with the rubber gasket on top. Make sure the O-ring seal is properly seated in the groove inside the bowl.
7. Screw on the bowl. Bowls should be screwed by hand, without using wrench.

Cartridge service life depends on your water quality and usage.

Cartridge should not be used longer than 12 months after installation regardless of usage.

Store at an ambient temperature of +4 °C to +43 °C (39 °F to 109 °F).



## Enjoy great - tasting water

1. Determine the cartridge replacement period according to the table:

 6 months	 4 months	 3 months
---	---	---



2. Set the number of the month when you need to change the cartridge.
3. Enjoy delicious water and be confident in its quality controlled by yourself!

## Warranty card

This warranty is effective for 12 months from the date of purchase provided the product was installed and used according to the technical requirements stated in the manual. The warranty does not extend to cover consumable parts (cartridges) and any defects not claimed during the warranty period or caused by improper use of the product. Warranty claims shall be filled with a valid warranty card and a proof of purchase. Cases that are not covered under this warranty shall be handled under the provisions of relevant consumer rights legislation.

Warranty is provided upon original warranty card and a receipt.

## Warranty card

Seller's name and stamp:

Product description:

Date of manufacture:

Date of purchase: