

## Installation Instruction to SYX MOTO Dirt Bike

### SYX MOTO Dirt Bike Video Instruction

[https://www.youtube.com/playlist?list=PL\\_AaSsd6V4li8oOLeB6lu73qHrdIFLock](https://www.youtube.com/playlist?list=PL_AaSsd6V4li8oOLeB6lu73qHrdIFLock)

Here is the photo instruction:

1. Open the box



## 2. Rear shock bolt installation



### 3. handle bar installation



## 4. front wheel installation



## 5. fender/plate installation



This is the Holeshoot-X plate and front fender.

The plate and front fender for Holeshoot is slightly different.



## 6. Decals application



Picture shows appropriate decal application location.

Decal may vary for different batch of merchandise.

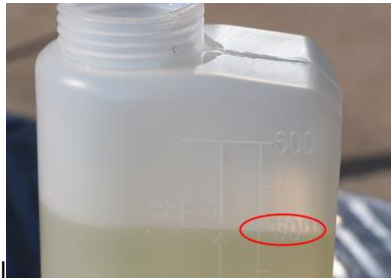
## 7. petrol/oil 20-25/1 mix



Use regular 2 stroke oil (easy to find in super market) and 91+ octane fuel.

Ratio mix should be 1 gal of fuel to 5.5oz of 2 stroke oil.

You can also use the mixing bottle provided with the unit to achieve proper mixture.



1. add fuel to 500ml



2. add oil between the indicators (20:1 to 25:1)

Version: 20190213

## 8. ready to go

If the instruction does not make any senses or you any other concerns, please contact us via: [cyberfleet@foxmail.com](mailto:cyberfleet@foxmail.com) to get proper guidance.

### Reference:

#### 1. FAQ

a) **When and where do you ship?**

Generally, we will ship within 2 workings days from our warehouse in Texas, Georgia or California as per the availability of inventory and distance to your address.

b) **How long will it take to arrive?**

We use UPS to ship dirt bikes and it will take 1-4 working days to arrive according the distance to our warehouse to your address. Our warehouses are located in Texas, Georgia or California. We will choose the nearest one according to the availability of inventory.

c) **How to contact you?**

Please email [cyberfleet@foxmail.com](mailto:cyberfleet@foxmail.com)

Phone call support will follow up when needed.

We provide customer service from 12 hours every day, from Monday Through Sunday, even during Christmas holiday.

d) **More FAQ?**

Please refer to this file: <http://image.motorscootershops.com/icebear/FAQ.pdf>

#### 2. Receipt Instruction & Shipping Damages

<http://image.motorscootershops.com/icebear/UserGuide.pdf>

#### 3. SYX MOTO Dirt Bike Video Instruction

[https://www.youtube.com/playlist?list=PL\\_AaSsd6V4li8oOLeB6lu73qHrdIFLock](https://www.youtube.com/playlist?list=PL_AaSsd6V4li8oOLeB6lu73qHrdIFLock)

How to install SYX MOTO Holeshoot Mini Dirt Bike

SYX MOTO Kids Dirt Bike: Change the Max Speed Level

and more to be updated

#### 4. Requesting MSO, Certificate of Origin or Invoice

<http://image.motorscootershops.com/icebear/MSO.pdf>

#### 5. Warranty & Return Policy

<http://image.motorscootershops.com/icebear/ReturnWarranty.pdf>



6. More and Latest Products

<http://image.motorscootershops.com/icebear/Catalogue.pdf>

**Get latest products and find coupons to get discount!**