

# SPOTlifter

## POWERBRUSH

HAND HELD DEEP CLEANER  
USER'S GUIDE

1716 Series



Thanks / Consumer Services 2

Safety Instructions 3

Product View 4

Features / Assembly 5

Operation 6-7

Clean-Up/Storage 8-9

Troubleshooting 10

Replacement Parts 11

About Your Warranty 12

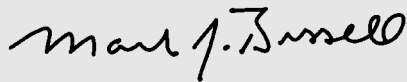
Thanks for buying a BISSELL SpotLifter® Powerbrush

We're glad you purchased a BISSELL SpotLifter® PowerBrush Handheld Deep Cleaner. Everything we know about floor care went into the design and construction of this handy, home cleaning product.

Your BISSELL SpotLifter® PowerBrush is well made, and we back it with a limited one-year warranty. We also stand behind it with a knowledgeable, dedicated Consumer Services department, so, should you ever have a problem, you'll receive fast, considerate assistance.

My great-grandfather invented the floor sweeper in 1876. Today, BISSELL is a global leader in the design, manufacture, and service of high quality homecare products like your BISSELL SpotLifter® PowerBrush.

Thanks again, from all of us at BISSELL.



Mark J. Bissell  
President and Chief Executive Officer

## BISSELL Consumer Services

For information about repairs or replacement parts, or questions about your warranty, call:

**BISSELL Consumer Services**

**1-800-237-7691**

Monday - Friday      8 a.m. — 10 p.m. ET

Saturday              9 a.m. — 8 p.m. ET

Or write:

BISSELL Homecare, Inc.

PO Box 3606

Grand Rapids, MI 49501

ATTN: Consumer Services

Or visit the BISSELL website - [www.bissell.com](http://www.bissell.com)

When contacting BISSELL, have model number of unit available.

Please record your Model Number: \_\_\_\_\_

Please record your Purchase Date: \_\_\_\_\_

**NOTE: Please keep your original sales receipt. It provides proof of date of purchase in the event of a warranty claim. See "About Your Warranty" on page 12 for details.**

# IMPORTANT SAFETY INSTRUCTIONS

**When using an electrical appliance, basic precautions should be observed, including the following:**

**Read all instructions before using your SpotLifter® PowerBrush**

## **⚠️ WARNING:**

**To reduce the risk of fire, electric shock or injury:**

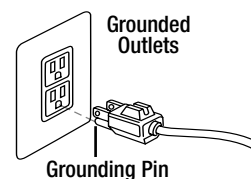
- Do not use for any purpose other than described in this User's Guide.
- Use only BISSELL cleaning products intended for use in this appliance.
- Use only manufacturer's recommended attachments.
- Do not expose to rain, store indoors.
- Do not handle plug or appliance with wet hands.
- Do not leave **SpotLifter® PowerBrush** when it is plugged in.
- Do not put any object into appliance openings or use with blocked openings. Keep free of dust, lint, hair, and anything that may reduce air flow.
- Do not expose hair, loose clothing, fingers or body parts to openings or moving parts.
- Be extra careful when cleaning stairs.
- Do not allow to be used as a toy. Close attention is necessary when used by or near children.
- Do not pick up hot or burning objects.
- Do not pick up flammable or combustible materials (lighter fluid, gasoline, kerosene, etc.) or use in the presence of explosive liquids or vapor.
- Do not pick up toxic material (chlorine bleach, ammonia, drain cleaner, gasoline, etc.).
- Do not use appliance in an enclosed space filled with vapors given off by oil base paint, paint thinner, some moth proofing substances, flammable dust, or other explosive or toxic vapors.
- Do not pull or carry by cord, use cord as a handle, close door on cord, pull cord around sharp corners or edges, run appliance over cord, or expose cord to heated surfaces.
- Do not use with damaged cord or plug.
- Do not immerse. Use only on surface moistened by cleaning process.

- Do not use **SpotLifter® PowerBrush** if it has been dropped, damaged, left outdoors or dropped into water. Have it repaired at an Authorized Service Center.
- Turn off all controls before unplugging.
- Unplug from outlet when not in use and before conducting maintenance and troubleshooting.
- Unplug by grasping the plug, not the cord. Do not unplug by pulling on cord.
- Always connect to a properly grounded outlet; see grounding instructions.
- Do not modify the 3-prong grounded plug.

## SAVE THESE INSTRUCTIONS

### GROUNDING INSTRUCTIONS

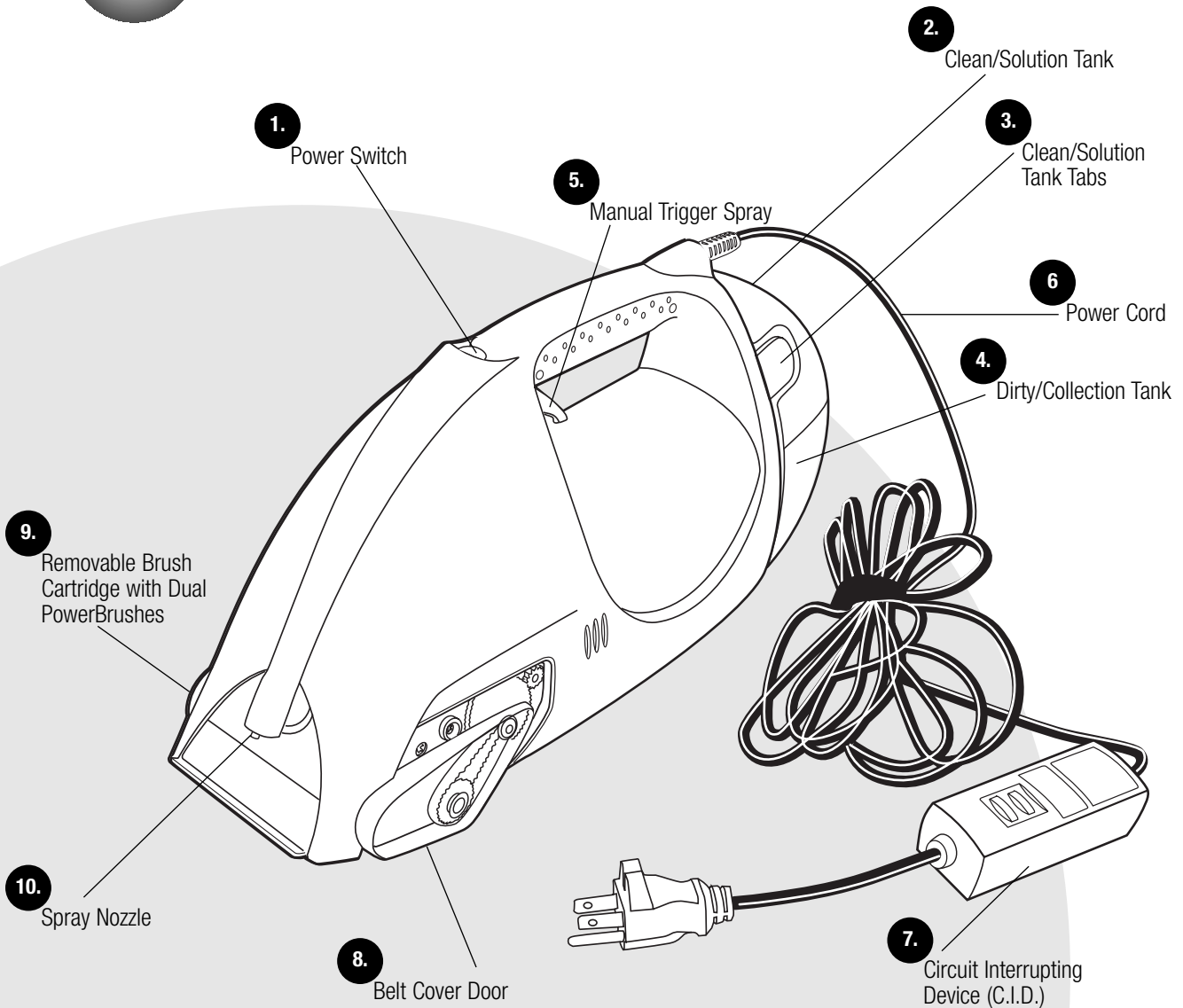
This appliance must be connected to a grounded wiring system. If it should malfunction or break down, grounding provides a safe path of least resistance for electrical current, reducing the risk of electrical shock. The cord for this appliance has an equipment-grounding conductor and a grounding plug. It must only be plugged into an outlet that is properly installed and grounded in accordance with all local codes and ordinances.



**⚠️ WARNING:** Improper connection of the equipment-grounding conductor can result in a risk of electrical shock. Check with a qualified electrician or service person if you aren't sure if the outlet is properly grounded. **DO NOT MODIFY THE PLUG.** If it will not fit the outlet, have a proper outlet installed by a qualified electrician. This appliance is designed for use on a nominal 120-volt circuit, and has a grounding attachment plug that looks like the plug in the drawing above. Make certain that the appliance is connected to an outlet having the same configuration as the plug. **No plug adapter should be used with this appliance.**

This model is for household use only.

## Product View



**CAUTION:** Use only BISSELL Little Green® formula in your cleaner. Use of cleaning formulas which contain lemon or pine oil may damage this appliance and void warranty. Do not use chemical spot cleaners or solvent-based soil removers. These products may react with the plastic materials used in your cleaner, causing cracking or pitting.

## SpotLifter® PowerBrush Product Features

- 1. Power Switch (Black).** Turns on the unit.  
0 = "OFF" position  
I = "ON" position
- 2. Clean/Solution Tank.** Holds Little Green® Formula and water.
- 3. Clean/Solution Tank Tabs.** Gently press into remove the Clean/Solution Tank.
- 4. Dirty/Collection Tank.** Collects dirty water and solution. You will need to remove the Clean/Solution Tank before you can remove get to the Dirty/Collection Tank.
- 5. Manual Trigger Spray.** Dispenses water and solution.
- 6. Power Cord.**
- 7. Circuit Interrupting Device (C.I.D.).** Because you will be using this product in wet environments, such as bathrooms, we have equipped this unit with this added safety feature. The C.I.D. shuts off the product in potentially hazardous situations. The C.I.D. has test (white) and reset (red) buttons which should be operated each time the product is plugged in.
- 8. Belt Cover Door.**
- 9. Removable Brush Cartridge with Dual Powerbrushes.**
- 10. Spray Nozzle**

 **WARNING:**  
Do not plug in your SpotLifter PowerBrush until you have completely reviewed the following instructions and have become familiar with all instructions and operating procedures.

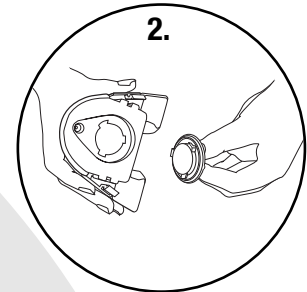
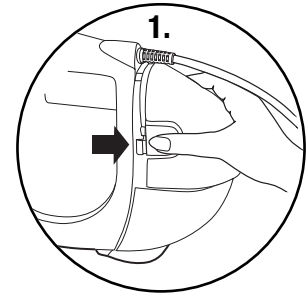
## Assembly

There are no steps required for assembly.

## How To Use Your SpotLifter PowerBrush

### Filling Your Clean/Solution Tank

1. Remove the Clean Tank by gently pressing the Quick Release tabs on the Clean Tank and sliding the tank off of the unit.
2. Open the tank by unscrewing and removing the cap. Add water and formula\* to the indicated fill lines on the Clean Tank.  
**\*NOTE: Your SpotLifter PowerBrush includes an 8 oz. Trial size formula starter bottle.**
3. Replace the cap before placing the tank back on the unit.



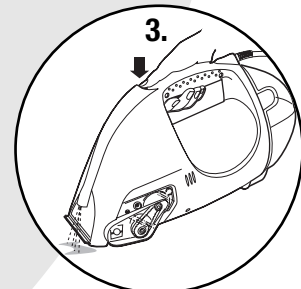
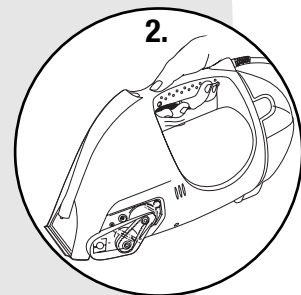
### Pre-Treating

To aid in the removal of tough, stubborn stains, pre-treating the stain may be necessary.

1. Hold the unit above the area to be cleaned. Using the Manual Trigger Spray, apply a sufficient amount of water and solution to the stain.
2. Wait 3-5 minutes before cleaning.

### Cleaning

1. Plug in the unit.
2. While holding the SpotLifter PowerBrush above the area to be cleaned, apply water and formula by depressing the Manual Trigger Spray, dispensing fluid to the soiled/stained area.
3. Turn the power switch to the "ON" position. ( I )



## Cleaning Continued

4. To use the Dual PowerBrushes place the unit horizontal w/ the surface to be cleaned.
5. For suction, press the front of the SpotLifter PowerBrush firmly against surface area to be cleaned and pull toward you to remove soil and cleaning solution.  
To use only the Dual PowerBrushes, without suction, place the unit horizontal with the surface to be cleaned.

**Note: Step #4 may be repeated until no more dirty water is removed or until the area to be cleaned meets your satisfaction.**

6. Check the Dirty/Collection tank and empty the tank if it is full (See Clean Up/Storage, page 8).
7. If the Spotlifter PowerBrush stops spraying, turn off the unit and check the Cleaning Solution level in the Clean/Solution Tank. Refill if needed. Never run dry.

### *Tip:*

You may also spray water and formula, with the Manual Trigger Spray, while the unit is turned on and you are using the Dual PowerBrushes and Suction to clean.

## Deep Cleaning Upholstery

1. Check manufacturer's tag before cleaning. "W" or "WS" on the tag means you can use your SpotLifter PowerBrush. If tag is coded with an "S" (with diagonal strike-through) or states "Dry Clean Only", do not proceed.
2. If manufacturer's tag is missing or not coded, check with your furniture dealer.
3. If possible, check upholstery stuffing. Colored stuffing may bleed through fabric when wet.

### *Tip:*

Fast attention to a spill on upholstery can prevent permanent staining.

## Cleaning Spills From Hard Surfaces

1. Turn the unit on to activate the suction.
2. Press the front of SpotLifter PowerBrush firmly against surface to vacuum the spill.
3. Press the Manual Trigger Spray to apply the cleaning solution.
4. Press the front of the SpotLifter PowerBrush firmly against the surface to vacuum the cleaning solution.
5. Check the Dirty/Collection tank and empty the tank if it is full (See Clean Up/ Storage, page 8).
6. If the SpotLifter PowerBrush stops spraying, turn off the unit and check the Cleaning Solution level in the Clean/Solution Tank. Refill if needed. Never run dry.

### *Tip:*

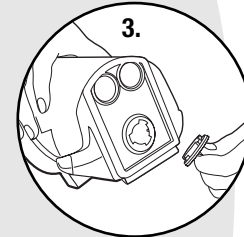
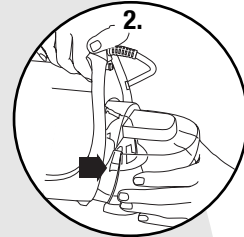
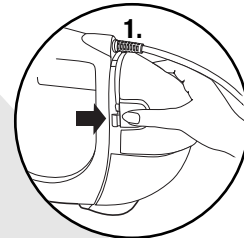
When cleaning a vertical surface (ie chair back, auto interior, etc.) begin with a completely empty Dirty/Collection Tank.

## Clean-Up/Storage

1. Turn the power switch to the "OFF" position. ( **0** )
2. Unplug the unit.
3. Carry the SpotLifter PowerBrush to the sink or drain.

## To Empty the Dirty/Collection Tank

1. First you need to remove the Clean/Solution Tank. Gently press the Quick Release tabs on the Clean/Solution Tank and slide the tank off of the unit.
2. Grab the Dirty/Collection Tank and pull to remove.
3. While at the sink, remove the Tank Cap by turning approximately 1/4 turn counterclockwise and lift out the cap.
4. Empty the tank. Rinse the Dirty/Collection tank with warm water.
5. Replace cap and turn approximately 1/4 turn clockwise, until snug.
6. Slide the Dirty/Collection Tank into the unit. Replace the Clean/Solution Tank.  
**Note: If a significant amount of water and formula remains in the Clean/Solution Tank, you may leave it in the Clean/Solution Tank for your next cleaning task.**

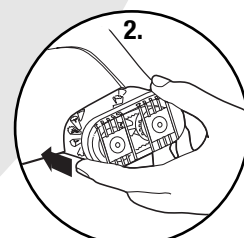
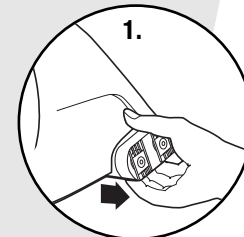


## To Clean the Dual Powerbrushes

**NOTE: Make sure the Power Switch is in the "OFF" position. ( **0** )**

1. Firmly grasp the Brush Cartridge from the side of the unit and pull out from the unit.
2. To remove any debris that may have collected around the Dual Powerbrushes, rinse the Brush Cartridge under warm water.
3. Replace the Brush Cartridge into the unit by gently guiding the Cartridge in the unit. Once it is in place, firmly "snap" the Brush Cartridge in place.

**NOTE: Do not attempt to remove or insert the Brush Cartridge while the unit is running. This will damage your unit.**



## Putting It Away

Store in a dry area, at room temperature to avoid freezing.

## To Replace the PowerBrush Belt

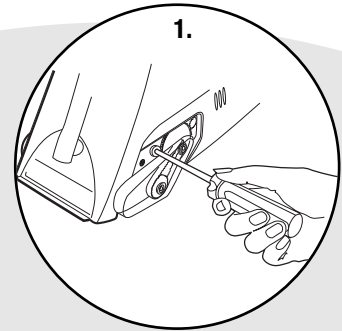
If the belt should break, to replace:

- 1.** Remove the screw in the belt cover using a Phillips Screwdriver.
- 2.** Take the broken belt out.
- 3.** Replace the new belt over the 2 belt gears.
- 4.** Replace the belt cover door.

 **WARNING:**  
To reduce the risk of  
fire, electric shock or  
injury unplug from outlet  
before servicing.

## Tip:

If you do not have the Brush Cartridge in all the way, the Dual Powerbrushes will not rotate. Firmly push the cartridge in place, while listening for the “snap” to know it is in all the way



### Cleaner won't run.

#### Possible Causes

- 1 Power cord not plugged in
- 2 Blown fuse/tripped breaker
- 3 C.I.D. needs to be reset

#### Remedies

- 1 Check electrical plug
- 2 Replace household fuse or reset breaker
- 3 Reset C.I.D. (page 5)

### Reduced spray or no spray.

#### Possible Causes

- 1 Spray Nozzle clogged
- 2 Clean/Solution Tank empty
- 3 Tank not in place properly

#### Remedies

- 1 Clean Spray Nozzle
- 2 Check/Refill Tank
- 3 Make sure tank is inserted properly.

### Deep Cleaner Won't pick up cleaning solution.

#### Possible Cause

- 1 Dirty/Collection Tank is full
- 2 Dirty/Collection Tank drain plug is loose

#### Remedies

- 1 Empty Dirty/Collection Tank
- 2 Check plug for snug fit

### Dual PowerBrushes are not rotating.

#### Possible Causes

- 1 Removable Cartridge not inserted properly/all the way
- 2 Broken Belt

#### Remedies

- 1 Make sure to firmly "snap" the Brush Cartridge in place
- 2 Replace Belt (page 9)

### Water Coming Out Vents.

#### Possible Causes

- 1 Tank is past full line.
- 2 Unit is not in a horizontal position with the surface being cleaned.

#### Remedies

- 1 Empty Tank
- 2 Empty Tank



#### **WARNING:**

Do not use an extension cord with this product. The use of an extension cord may result in a severe electrical shock, particularly if the extension cord does not have an electrical rating higher than that of the product, OR if the extension cord does not have a three-prong grounding plug and if the extension cord is not plugged into a circuit box with a ground fault circuit interrupter. Safety precautions such as keeping all connections off the ground and dry will not eliminate the danger.



#### **WARNING:**

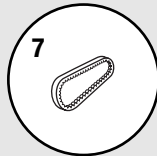
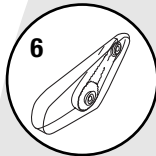
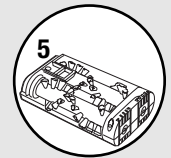
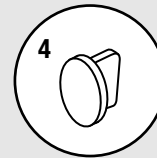
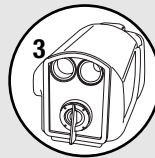
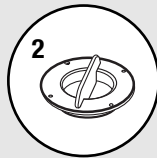
To reduce the risk of fire, electric shock or injury unplug from outlet before servicing.

## Replacement Parts

Item	Part No.	Part Name
1	203-2501	Clean/Solution Tank w/Cap
2	203-2502	Clean/Solution Tank Cap Only
3	203-2513	Dirty/Collection Tank w/Plug
4	203-2504	Dirty/Collection Tank Plug Only
5	203-2514	Brush Cartridge
6	203-2517	Belt Cover
7	203-2516	Belt

### CLEANING FORMULAS

8	497	64 oz. Little Green® Formula
9	499	32 oz. Little Green® Formula
10	797	64 oz Pet Odor & Stain Removal® Formula
11	799	32 oz Pet Odor & Stain Removal® Formula



## About Your Warranty

This warranty gives you specific legal rights, and you may also have other rights which may vary from state to state. If you need additional instruction regarding this warranty or have questions regarding what it may cover, please contact BISSELL Consumer Services by e-mail, telephone, or regular mail as described below.

### Limited **One** Year Warranty

Subject to the \*EXCEPTIONS AND EXCLUSIONS identified below, upon receipt of the product BISSELL Homecare Inc. will repair or replace (with new or remanufactured components or products), at BISSELL's option, free of charge from the date of purchase by the original purchaser, for one year any defective or malfunctioning part.

See information below on "If your BISSELL product should require service".

This warranty applies to product used for personal, and not commercial or rental service. This warranty does not apply to fans or routine maintenance components such as filters, belts, or brushes. Damage or malfunction caused by negligence, abuse, or use not in accordance with the User's Guide is not covered.

### If your BISSELL product should require service:

Call BISSELL Consumer Services at the number below or visit the BISSELL website - **www.bissell.com** to locate a BISSELL Authorized Service Center in your area. If you need information about repairs or replacement parts, or if you have questions about your warranty, contact BISSELL Consumer Service

#### **Website or E-mail:**

www.bissell.com

Use the "Customer Services" tab.

#### **Or Call:**

BISSELL Consumer Services

1-800-237-7691

Monday - Friday 8 a.m. - 10 p.m. ET

Saturday 9 a.m. - 8 p.m. ET

#### **Or write:**

BISSELL HOMECARE, INC.

PO Box 3606

Grand Rapids MI 49501

ATTN: Consumer Services

BISSELL HOMECARE, INC. IS NOT LIABLE FOR INCIDENTAL OR CONSEQUENTIAL DAMAGES OF ANY NATURE ASSOCIATED WITH THE USE OF THIS PRODUCT. BISSELL'S LIABILITY WILL NOT EXCEED THE PURCHASE PRICE OF THE PRODUCT.

Some states do not allow the exclusion or limitation of incidental or consequential damages, so the above limitation or exclusion may not apply to you.

#### \*EXCEPTIONS AND EXCLUSIONS FROM THE TERMS OF THE **LIMITED** WARRANTY

THIS WARRANTY IS EXCLUSIVE AND IN LIEU OF ANY OTHER WARRANTIES EITHER ORAL OR WRITTEN. ANY IMPLIED WARRANTIES WHICH MAY ARISE BY OPERATION OF LAW, INCLUDING THE IMPLIED WARRANTIES OF MERCHANTABILITY AND FITNESS FOR A PARTICULAR PURPOSE, ARE LIMITED TO THE ONE YEAR DURATION FROM THE DATE OF PURCHASE AS DESCRIBED ABOVE.

Some states do not allow limitations on how long an implied warranty lasts, so the above limitation may not apply to you.



©2002 BISSELL Homecare, Inc  
Grand Rapids, Michigan  
All rights reserved. Printed in China.  
Part Number 603-2210  
Rev 02/03

Visit our website at:  
www.bissell.com