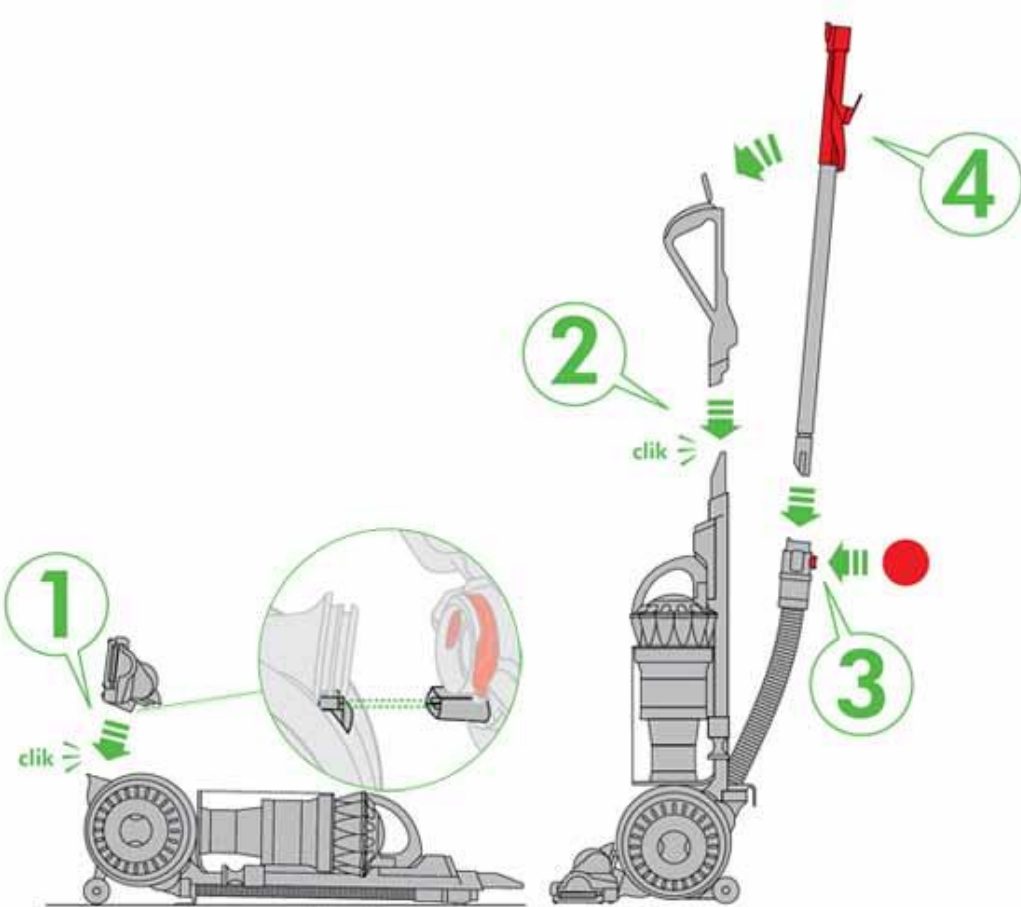


Quick Start Guide Step by Step

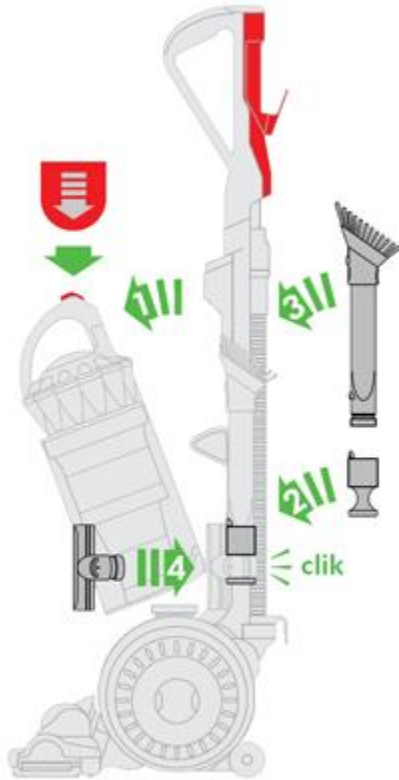
Step 1 - Assembling the machine.

1. Attach the cleaner head onto the base of the machine ensuring the electrical pins are aligned, as shown below.
2. Attach the wand handle by sliding it on to the top of the machine until it 'clicks' into place.
3. Ensure the hose is straight. Press the red button on the hose.
4. Slide the end of the wand down into the hose and onto the handle to secure.



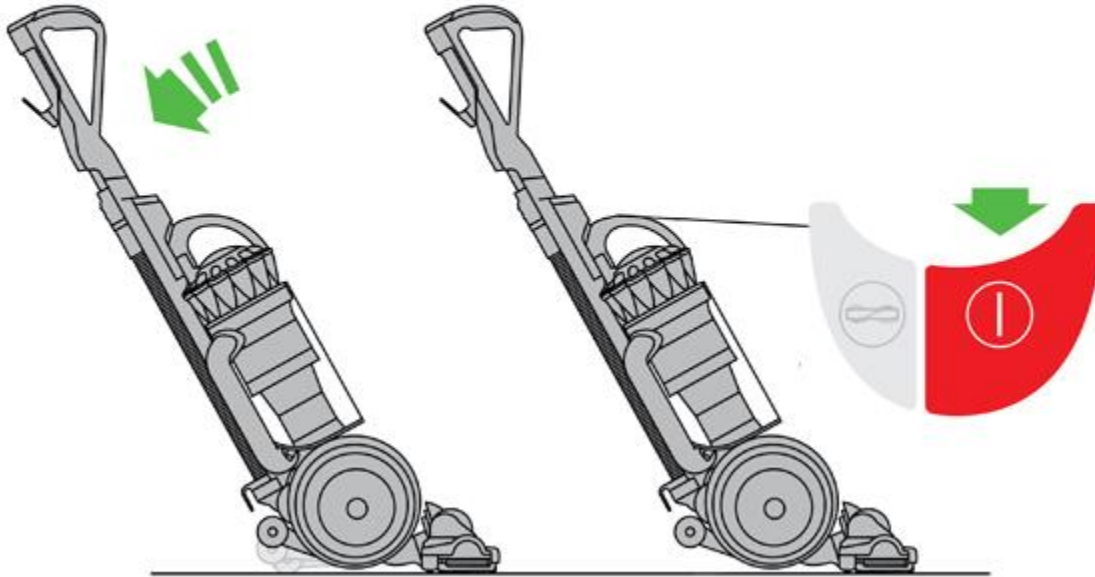
Step 2 - Attaching the accessory tools.

1. Remove the bin and cyclone assembly.
2. Fit the tool holder onto the side of the machine ensuring that it 'clicks' into place.
3. Attach the combination tool.
4. Attach the stair tool.

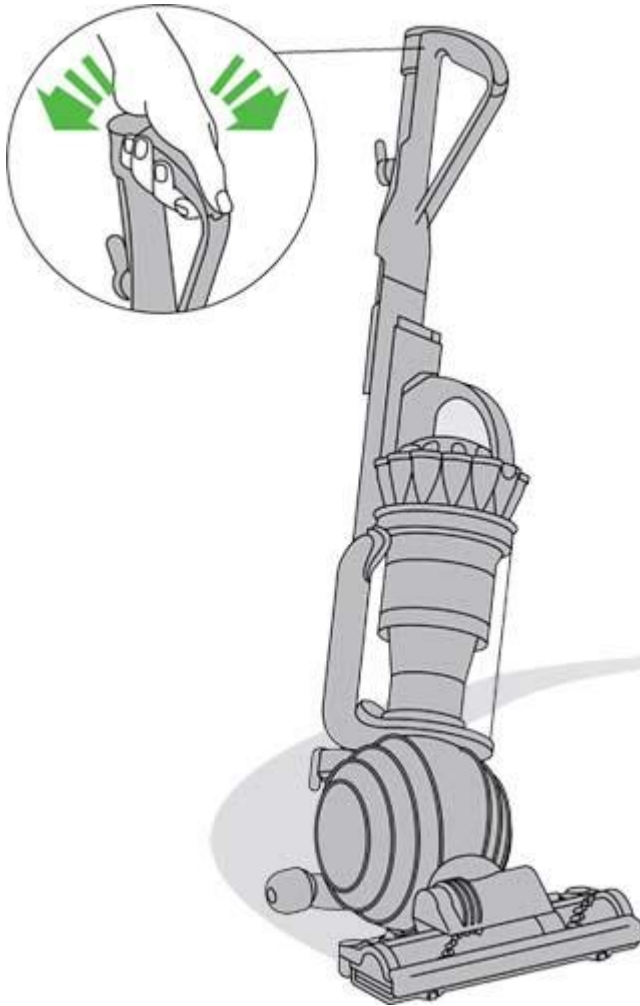


Step 3 - Start vacuuming

- Plug the machine in.
- Recline the machine into the vacuuming position.
- Ensure the stabilizing wheels are fully retracted.
- Press the ON/OFF switch.



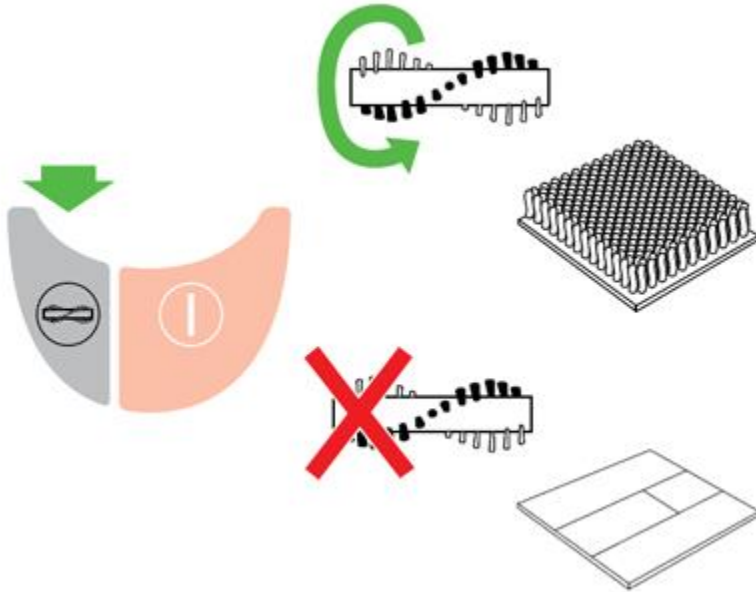
- Small movements of the wrist will create a zigzag motion in the cleanerhead allowing for easier cleaning around furniture.



Step 4 - Vacuuming on different floor types.

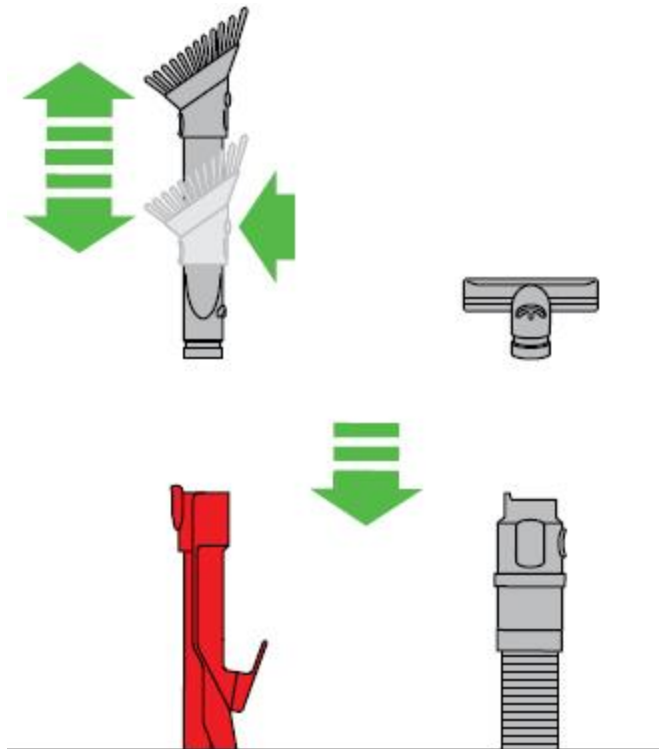
The brushbar will start automatically once the machine is switched on and lowered into the vacuum position.

- Press the brush control button located next to the ON/OFF switch to turn the brushbar off for vacuuming delicate rugs, looped carpets and hard floors.
- Press the button again to restart the brushbar for vacuuming carpets.



Step 5 - Using the accessory tools.

- Attach either the combination tool or the stair tool to the wand or hose as shown.



Step 6 - Emptying the bin

Turn power off and unplug the machine.



- To ensure your machine continues to clean effectively, the clear bin must be emptied as soon as the dust reaches the max mark.
- Remove the bin assembly by pressing the catch on top of the carry handle.
- To empty the bin press the catch on top of the carry handle again to release dust directly into a dustbin.
- Shake or tap firmly to remove all dust from inside the fine dust collector.
- Press firmly on the centre of the clear bin base to close.

