

# GolfBuddy® WT6

**Thank you for choosing the GolfBuddy WT6**

The GolfBuddy WT6 Golf GPS watch's MONO LCD screen has high visibility and intuitiveness. The WT6 provides a simple and easy user interface with the push of one direct golf mode button. The WT6 combines course views for over 38,000 courses preloaded in 130 countries around the world, making it a great addition to your game. The WT6's battery life is over 9 hours. In addition, you are able to download free course updates via your computer with no fees ever!



## **TABLE OF CONTENTS**

- 1. DEVICE OVERVIEW & CHARGING**
- 2. MAIN MENU**
- 3. GOLF MODE**
- 4. CARE & MAINTANANCE**
- 5. UPDATING YOUR UNIT FOR FREE**

# 1. DEVICE OVERVIEW & CHARGING

Using your GolfBuddy WT6 GPS Golf Watch



- GOLF : The Golf Mode button will take you directly into Golf Mode.
- MENU : View menu options, View previous, Power on
- OK : Select
- UP : Move selection
- DOWN : Move selection

## 1.1 Power On

Press and hold MENU button for 2 seconds to **POWER ON**, then your GolfBuddy WT6 will power on to time mode screen. If the watch is still off, charge the watch first.

**Note** : Date/time will set automatically once the WT6 successfully connects to satellites.  
(Please note you must be outdoors to connect to satellites).

## 1.2 Charging your Device

When the watch's power gets critically low, all functions are disabled and "LOW POWER" message will be displayed.

Plug the USB cable into a standard USB port. This USB cable is compatible with USB ports found on computers, laptops, in automobiles, or standard 5V AC USB chargers.

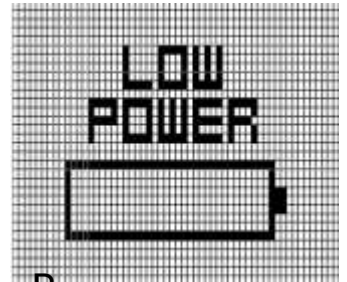
Insert the Micro USB cable plug into the Micro USB socket of the watch. Then the screen shown in the image to the right (image B) will display when the device is connected to the USB charging cable. This screen indicates USB data connection as well as battery charging.

The battery indicator will display while charging, and will display 100% when fully charged. Then, remove the Micro USB cable from device.

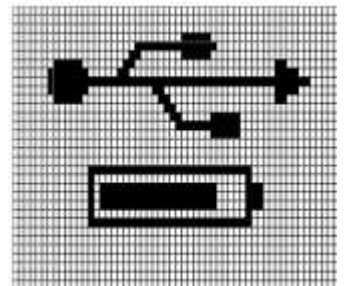
If your WT6 battery display is empty when connected and shows a low-battery icon (image A), it indicates that a full charge has not been achieved. Check your connection to make sure the cable is properly aligned with the connector, and then allow the WT6 to charge until the battery shows 100%.

**\*\* IMPORTANT : DO NOT USE QUICK-CHARGER AC ADAPTERS TO CHARGE THE WT6 WATCH. DOING SO MAY CAUSE DAMAGE AND VOID THE WARRANTY. AC ADAPTERS SHOULD NOT EXCEED 5.0V. CHECK YOUR AC ADAPTER'S RATING PRIOR TO USING.**

A



B



C



## 2. MAIN MENU

From Watch Mode (TIME), press "MENU" button to view the Main Menu. Navigate with "UP" or "DOWN" buttons. Press the "OK" button to activate the selected function from the menu. Functions include "SETTINGS", "SET TIME", "TRACKER", "POWER OFF", and "INFO".

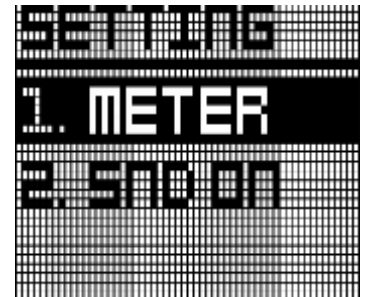
### 2.1 SETTINGS

In Main Menu mode, press "UP" and "DOWN" buttons to select "SETTING" function. Press "OK" button to activate this function. There will be 3 items: Unit scale, Sound, Slope.



#### UNIT

To set unit of measurement (affecting Golf Mode and Tracker) "YARD" or "METER, press the "OK" button. Then either can be selected.



#### SOUND

In order to turn the beep sound on or off, move to menu using navigate button.

Press the "OK" button, and either can be selected.



## 2.2 SET TIME

The WT6 time will set automatically once the watch successfully connects to satellites. First, user needs to set the Time Zone, 12/24 Hours Format, Day Format, and DST.

In Main Menu mode, press "UP" and "DOWN" buttons to select "SET TIME" function. Press "OK" button to activate this function.



In Set Time mode, you have option for "1. TIME ZN", "2. 12HOURS", "3. MON", "4. DST OFF" and "5. AUTO ON/OFF" setting. Press "UP" and "DOWN" buttons to select the function and press button "OK" to confirm the selection.



### Time zone

User can change time zone to suit location. Select "TIME ZN", the screen will change to screen shown in right image. Press "UP" and "Down" to change time zone

Time Zone default setting is "LON 0H".



Abbreviation	City	Difference
WLG	Wellington	+12H
NOU	New Caledonia	+11H
SYD	Sydney	+10H
DRW	Darwin	+9.5H
KOR	Korea	+9H

PEK	Beijing	+8H
HKG	Hong Kong	+8H
BKK	Bangkok	+7H
RGN	Yangon	+6.5H
DAC	Dhaka	+6H
DEL	Delhi	+5.5H
KHI	Karachi	+5H
KBL	Kabul	+4.5H
DXB	Dubai	+4H
THR	Tehran	+3.5H
MOW	Moscow	+3H
ATH	Athens	+2H
CAI	Cairo	+2H
BER	Berlin	+1H
PAR	Paris	+1H
CAS	Casablanca	0
LON	London	0
BSB	Brasilia	-3H
RIO	Rio de Janeiro	-3H
CCS	Caracas	-4H
WAS	Washington	-5H
NYC	New York	-5H
MSY	Monterrey	-6H
CHI	Chicago	-6H
ELP	El Paso	-7H
DEN	Denver	-7H
LAX	Los Angeles	-8H
SFO	San Francisco	-8H
ANC	Anchorage	-9H
HNL	Honolulu Hawaii	-10H
PPG	Pago Pago	-11H

## 12/24 Hour Format

To change, move to menu using navigate button. Press the "OK" button, use "UP" and "DOWN" buttons to select.

The default is "12HOURS" and the other option is "24HOURS".



## Day Format

To change, move to menu using navigate button. Press the "OK" button, use "UP" and "DOWN" buttons to select.

The default Day Format is "MON" and the other option is "LUN".



- ◆ MON : English notation of day
- ◆ LUN : French notation of day

## DST

DST is the Daylight Savings function

To change, move to menu using navigate button. Press the "OK" button, use "UP" and "DOWN" buttons to select.

The default is "DST OFF" and the other option is "DST ON".



## AUTO ON/OFF

This feature allows users that prefer to sync their time. In most cases, this is unnecessary. Minutes are set via GPS only. Press the "OK" button, use "UP" and "DOWN" buttons to select.



## 2.3 TRACKER

In Main Menu mode, press "UP" and "DOWN" buttons to select "TRACKER" function. Press "OK" button to activate this function.

The watch will start to search for the GPS signal. The message "SEARCHING" will be displayed. Press "MENU" button to disable Tracker mode and return to Time mode.

When the watch locks with the GPS signal, the display will show Distance in the middle row and Exercise Time in the lower row. Exercise time counting will start automatically.



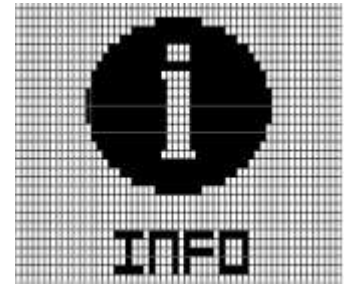
Press "DOWN" button to pause the Exercise Time and press "DOWN" button again to restart counting.

Press "UP" button to reset the Tracker and press "MENU" button to return back to Time mode.

## 2.4 INFORMATION

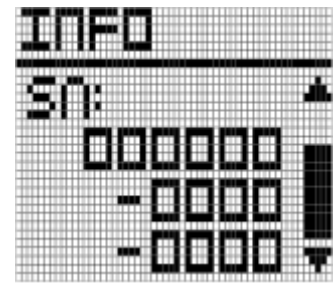
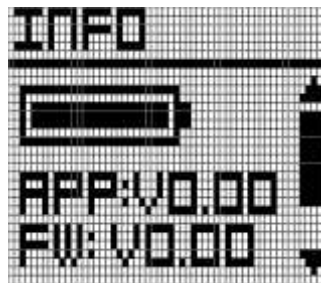
Find information on remaining battery, application, firmware version and serial number.

In Main Menu mode, press "UP" and "DOWN" buttons to select "INFO" function. Press "OK" button to activate this function.



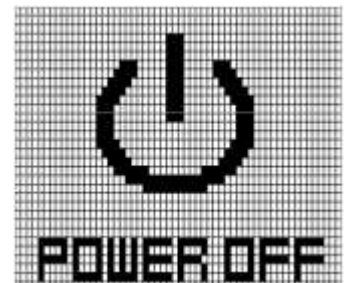
Information of battery level, firmware version, and serial no. will be displayed by using "UP" or "DOWN" buttons.

- APP : Golf application version
- FW : Device firmware version
- SN : Device serial number

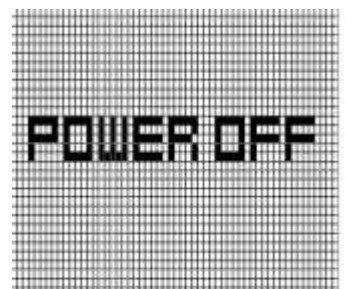


## 2.5 POWER OFF

In Main Menu mode, press "UP" and "DOWN" buttons to select "POWER OFF" function. Press "OK" button to activate this function. Press "UP" or "DOWN" buttons to select "YES" or "NO". Press "OK" button to confirm your selection.



If yes is selected and confirmed by "OK" button, the message "POWER OFF" will display for 5 seconds and the screen will be turn off.

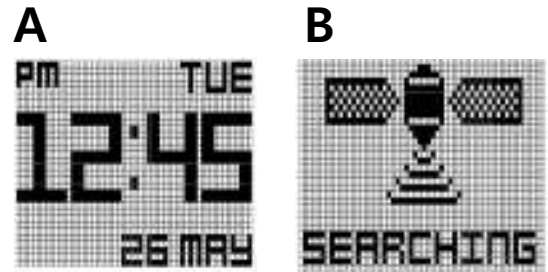


Press and hold "MENU" button for 2 sec in OFF mode to activate the watch again.

### 3. GOLF MODE

To enter Golf Mode, simply press the GOLF button from time mode. (Image A)

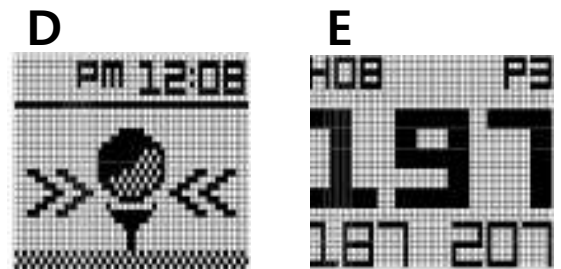
The screen shown in Image B will display.



After selecting Golf Mode, the WT6 will search for satellite signal as shown in the image to the right (image B). This can be cancelled by pressing the "MENU" button once, and you will return to time mode. Once a satellite connection is established, the WT6 will load the golf course (image C). This will take approximately 25 – 30 seconds. The loading screen also shows the golf unit of measurement setting for confirmation.



If you are not at a tee box after the golf course has finished loading, the WT6 will prompt you to head to the tee box (image D). Once you arrive at your starting tee box, the front, center, and back of the green distances (FCB) screen will appear (image E.).



**Note :** To access Play Golf mode properly, you should be at the golf course. If you are not at the golf course, the loading courses screen will display "Go to Course". This will also display in the rare occasion that you are at a golf course that is not currently mapped.

If your course is not mapped, please contact the Golf Buddy Course Department:

<http://golfbuddyglobal.com/courselibrary>

### 3.1 Front/Center/Back (FCB) Screen Overview

- ① Hole Number

(Ex) H08 : 8<sup>th</sup> Hole of Total Golf course

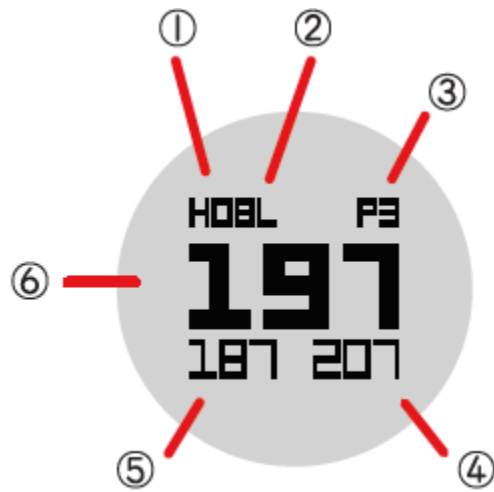
- ② L/R Green information

- ③ Par Information

- ④ Distance to the **Back** of the Green

- ⑤ Distance to the **Front** of the Green

- ⑥ Distance to the **Center** of the Green



The WT6 watch will automatically advance to the next hole as you play through a course.

Please note that in rare instances it may be necessary to manually advance to the next hole (UP button) or return to a previous hole (DOWN button). Pressing the OK button will cycle through golf features. (FCB, Hazards, Information, Shot Distance)

If the WT6 changes to the wrong hole by passing through the adjacent hole, press DOWN button to return to the hole just played.

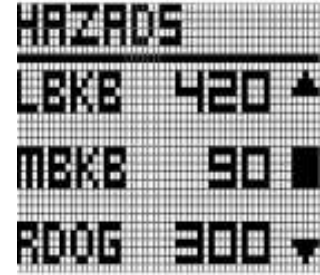
**Note** : If the hole has a Left and Right green, you will see an (L) or (R) between the hole number and par information. (This feature is only supported in Korea and Japan)

**Note** : When the distance to the center of the green is less than 20 yards, the WT6 will display a green-with-pin icon and the time.



### 3.2 Hazards

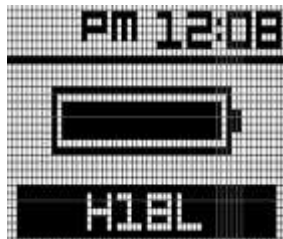
To view the available hazards for your current hole, press the **OK** button from the FCB screen. The WT6 watch displays up to 11 hazards per hole. Cycle through hazards using the **UP** button for next Hazard and the **DOWN** button for previous hazard. Distance to the start point of hazards display at the bottom of the screen, while distance to the end point of hazards (if available) display at the top of the screen (**Note:** only 1 distance provided at a time).



Below are abbreviation information of Hazards



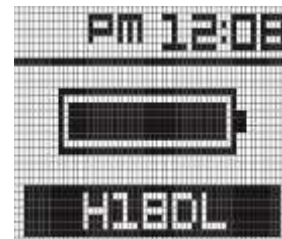
Pressing the OK button from the Hazards screen will show Green information (Information screen) and remaining battery life. User can change green information, using the UP and DOWN buttons.



Left Green



Right Green



Dual Green

### 3.3 Mark Function (Shot Distance)

Mark Function is Shot Distance Measurement feature. To measure the distance of any shot, press the **GOLF** button during Golf play mode. Screen will show image on the right.



When standing at the location where the shot is taken, press **OK** button to activate Mark Function, then screen will change to image on right.

Doing so will set the shot location (point A) to zero, and the device will begin measuring distance as you



move toward your ball. Once you have made it to your ball (point B), the number displayed is the distance between point A and point B in a straight line.

To re-measure the Shot Distance press the **OK** button and the screen will show "0" as shown in above screen.

Pressing **MENU, UP, or DOWN** button when on the Shot Distance screen will return to the FCB screen. Active shot measurements will continue in the background, and can be viewed by cycling back to the Shot Distance screen.

**Note :** Shot data will reset when a hole advancement occurs (automatic hole advance or manual hole advance).

### 3.4 Time check when in Golf mode

To check time when on FCB screen, press MENU button.

This screen shows the current time, date, current hole number, and current green information (Left, Right, Dual).

After 10 seconds, the screen will automatically return to FCB screen from time check screen. Or press any button to return to FCB screen

### 3.5 Exit Golf Play

To Exit Golf play, press and hold the **MENU** button for 3 seconds, the WT6 will display a prompt to confirm your selection. If you want to end golf play, press the **MENU** button to confirm your selection. You will then see the End of Golf play Summary.

Alternately, if you want to keep playing golf, press the **DOWN** button to return to Golf Mode.



### 3.6 Device RESET

If you experience incorrectly yardages or unusual behavior on the WT6, we recommend doing a RESET. This procedure will set the WT6 back to factory settings and should solve software related problems. To reset the WT6, press and hold the **GOLF, MENU, UP and DOWN** buttons for **5 seconds**, until the screen goes blank. The WT6 will restart automatically and enter Watch Mode.

## 4. CARE & MAINTENANCE

**The WT6 GPS Golf Watch is water resistant. To help ensure reliable operation, the following care and maintenance guidelines are recommended:**

- Avoid exposing the device to extreme environmental conditions for prolonged periods of time.
- Avoid severe impacts on the device.
- You may clean the device occasionally with a soft, damp cloth.
- Brush the clip contacts on the bottom of the device regularly. Debris accumulation may affect charging & data transfer. Use a soft-bristled brush. Hard bristles or wire brushes may scratch the device.
- **DO NOT** expose the device to strong chemicals such as alcohol, gasoline, etc. as they will damage the device.
- Store the device in a dry place when not in use.

### **WARNING**

- **DO NOT** attempt to open the WT6 watch. Risk of explosion if battery is replaced with incorrect type.
- **DO NOT** attempt to open, disassemble, or service the internal battery. The battery **MUST** be replaced by a qualified technician.
- **DO NOT** crush, puncture, or short the battery's external contacts.
- **DO NOT** expose to temperatures above 140° F (60 ° C).
- Properly recycle or dispose of the battery.
- **DO NOT** dispose in fire or water.

### **Legal Disclaimer**

By using this product, you agree that Deca International Corp. will not be held legally responsible for any injury or damage to you or any person or property caused by the user's improper operation and/ or poor judgment while using this product.

### **Additional Information**

The Global Positioning System (GPS), a network of 32 satellites orbiting the Earth, is operated and maintained by the U.S. government. This GPS device requires at least 3 acquired satellites to accurately determine your position.

## 5. UPDATING YOUR UNIT FOR FREE

Your GolfBuddy WT6 unit has been pre-loaded with the latest firmware and world-wide course maps available at the time of manufacture, so it's ready to play right out of the box. For optimum performance and longer product life, we recommend that you register your unit and keep it updated with the latest course maps and updates for free. The instructions below will provide a step-by step guide on how to register and update your GolfBuddy WT6.

### 5.1 Downloading the GolfBuddy Management Software (GB Manager) to your computer:

- Please visit our website at [www.golfbuddyglobal.com](http://www.golfbuddyglobal.com)
- Click on the panel titled "Download GB Course Manager." You will then see a screen with an option to choose either Windows or Mac based software.
- Click on the correct version for your computer. Once downloaded, you can run the application to install the GB Manager on your computer.
- Once completed, you will see a blue icon labeled "GolfBuddy World Course Manager" on your desktop. Use this to access the GB Manager once you have registered.

### 5.2 Creating a User ID:

- Open the GB Manager application by clicking on the blue icon on your desktop.
- You will see a Login Panel . Click on "Sign up" at the bottom. This will bring up a webpage for you to create your User ID and Password.
- Fill in all the details that are required ( indicated by " \* " ). Please note the instructions regarding no Caps, Symbols, Spaces, & a 4-15 character-long requirement. You will need to click "Check Availability" to verify your selected User ID is valid and not already being used.
- Click "Submit" at the bottom of the form when finished.
- Your User ID and Password are now created...**Make sure to write them down and keep them in a safe place in case you forget them!**

### 5.3 Registering your GolfBuddy WT6:

Connect your GolfBuddy unit to a USB port on your computer using the USB cable provided with the unit.

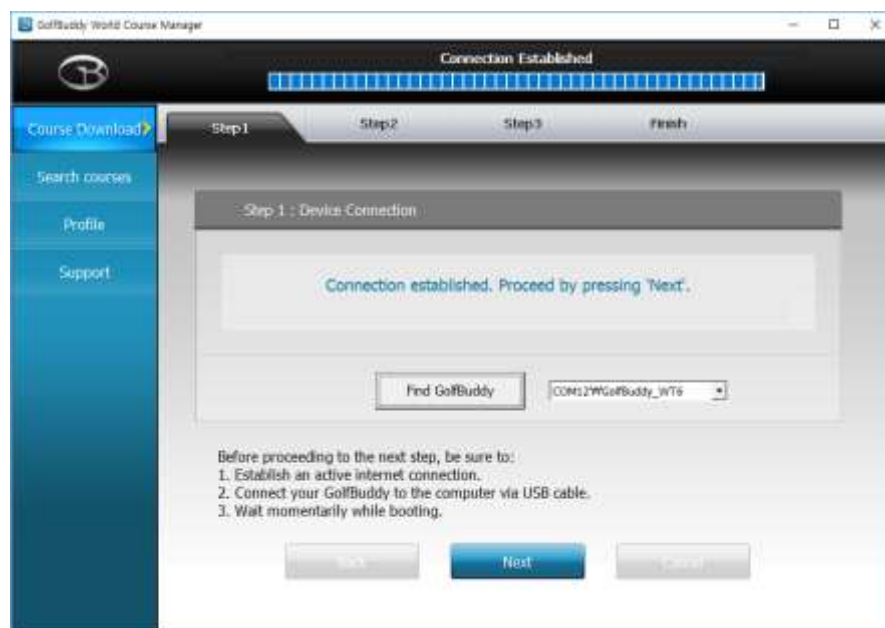
- After a short time, your GolfBuddy unit should show an icon on the screen indicating it is connected to the computer.

**Notes:** Disregard any driver download requests that your computer may say is required.

- Click on the blue GB icon on your desktop and open the Login Panel.
- Enter your User ID and Password. You should now see a panel that indicates the GB Manager is searching for the device.

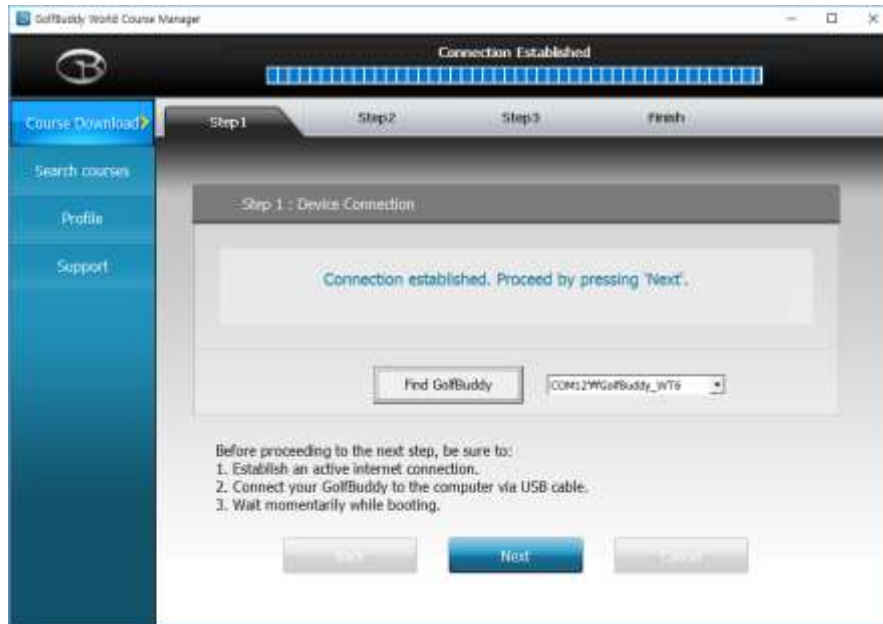
After a short time, you will

see "Connection Established". At this stage, your unit is successfully registered to your account that you created.

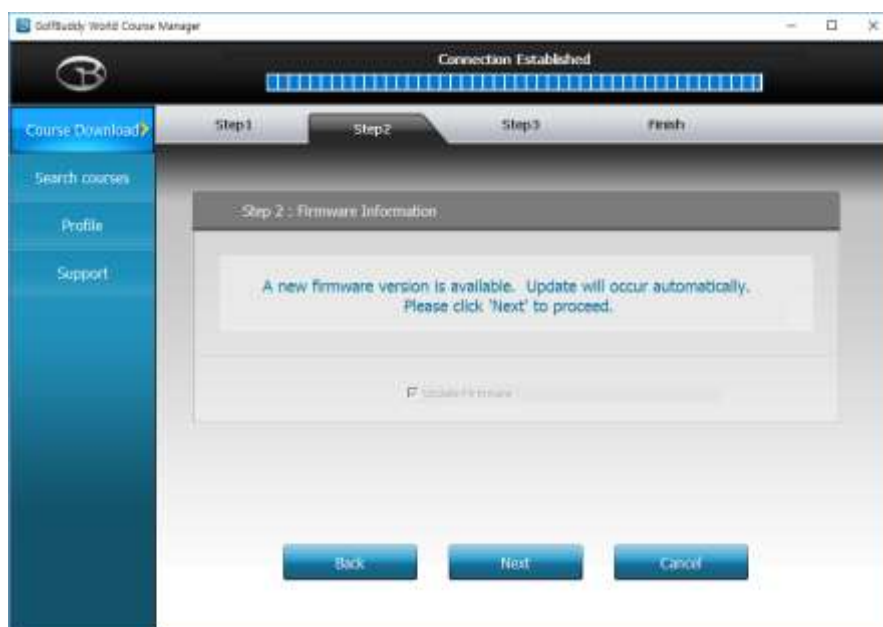


## 5.4 Updating your GolfBuddy WT6 in three Steps:

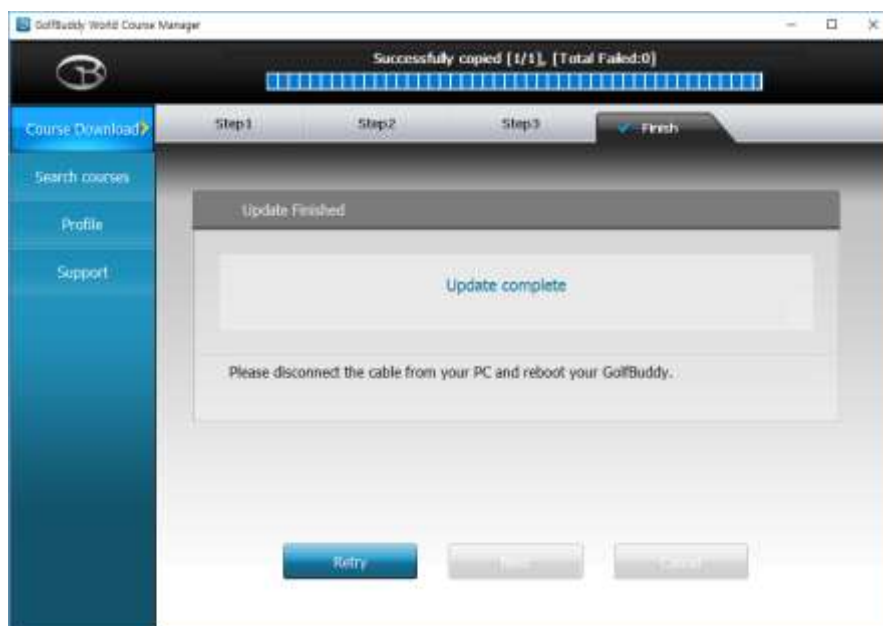
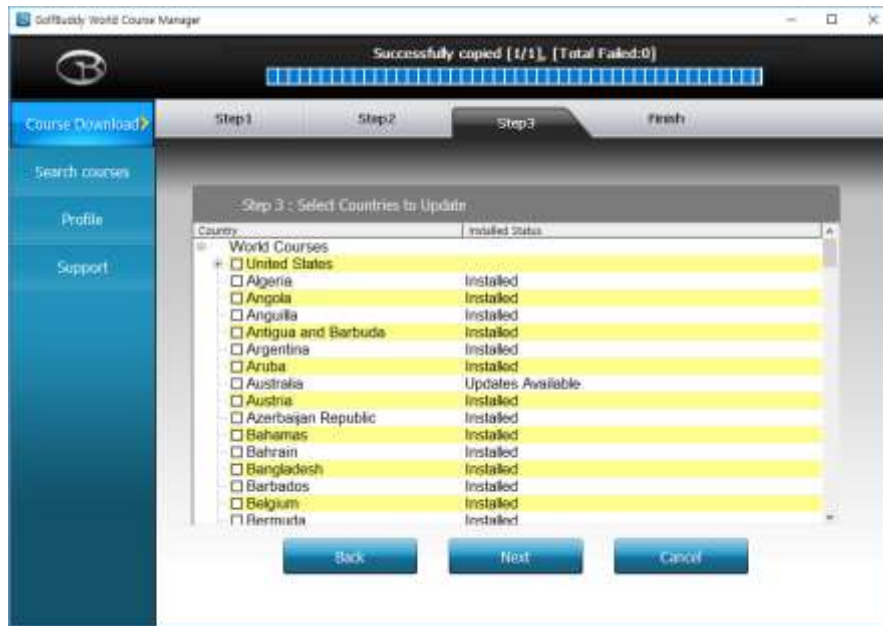
**Step 1.** Once you get the "Connection Established" message, please click "Next" to proceed to Step #2: Firmware Update.



**Step 2.** At step 2, click "Next" to install the latest firmware. If the firmware is already up to date, click "Next" to proceed to step 3.



**Step 3.** Select the countries that you would like to update and click "Next". You will see a panel that asks you to "Overwrite" or "Newly Updated Only". Select your preferred option, then click "OK" to start the course update. Once all the courses have been downloaded you will receive a message "Update Complete". You can now disconnect the unit. Your GolfBuddy is now ready to go with the latest updates!



**Note:** Do not disconnect the WT6 from the computer during the update process to prevent software malfunctions.

## 5.5 Updated Course Info

You can search courses by country, state, and city. You can also check to see when the course was last updated.

Golf Club	State	City	Updated Date
12 Shores GC	NH	Tucuman	09/05/2014
1757 GC	VA	Staring	11/26/2018
18 Mile Creek GC	NY	Hamburg	05/31/2013
3 Creek Ranch GC	WY	Jackson	10/23/2015
3 Lakes GC	PA	Pittsburgh	07/10/2015
3 Par at Four Points	CA	San Diego	03/16/2018
3-30 Club	IA	Linden	03/16/2018
5 x 10 Golf & CC	IA	Menlo	07/09/2018
500 Club, The	AZ	Phoenix	01/02/2015
76 Falls CC	KY	Albany	11/13/2015
93 Golf Ranch	ID	Jarons	07/09/2018
A. C. Reed GC	FL	Pensacola	07/09/2018
A. H. Blank GC	IA	Des Moines	06/05/2016
A. J. Jolly GC	KY	Alvordia	11/19/2018
A. L. Gustin GC	MO	Columbia	04/11/2014

## 5.6 Profile Info

System Information for your WT6 can be found under the profile tab.

